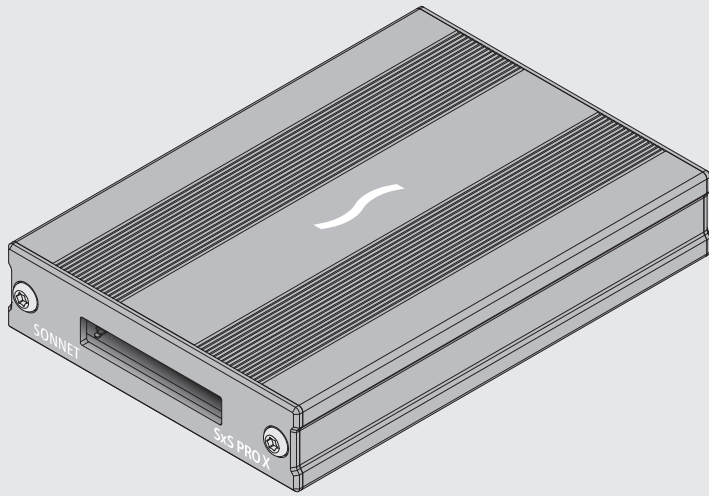


Quick Start Guide

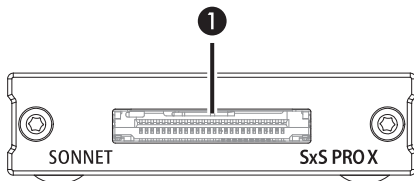
for Sonnet SxS™ PRO X Thunderbolt™ 3 Single-Slot Card Reader



SxS

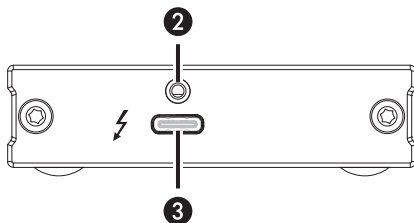

THUNDERBOLT™

SxS PRO X Thunderbolt 3 Single-Slot Card Reader Description



1 – Card Slot

This slot accepts all SxS cards; XQD™ and SDXC™ cards are supported with adapters (sold separately).



2 – Threaded Nut for ThunderLok™ 3

Attach the included Thunderbolt connector retainer clip here. Also compatible with ThunderLok 3L.

3 – Thunderbolt 3 Connector

Connect the included Thunderbolt cable between this port and your computer's (or intermediate peripheral device's) Thunderbolt port.

2

Mac® Compatibility

- Mac (Intel®) with Thunderbolt 3 ports
- macOS® 10.12.6+
- macOS Big Sur compatible (with SxS Driver 3.0+)*

Windows® Compatibility

- PC with a Thunderbolt 3, Thunderbolt 4, or USB4 port
- Windows 10 (64-bit Edition Version 1909 or greater)

SxS Media Compatibility

- Sony SxS, SxS-1, SxS Pro, SxS Pro+, SxS Pro+ D Series, SxS Pro+ E Series, SxS PRO X

Other Media Compatibility

- XQD (requires Sony QDA-EX1 adapter, sold separately)
- SD, SDHC, SDXC (requires Sonnet SD-SXS-E34 adapter or Sony MEAD-SD02, both sold separately)



Support Note: This document was up to date at the time of printing. However, changes to the hardware or software may have occurred since then. Please check the Sonnet website for the latest documentation.

1. Go to <https://www.sonnettech.com/support/kb/kb.php>
2. Navigate to and click the SxS PRO X Thunderbolt 3 Single-Slot Card Reader link.
3. Click the Manual link.
4. Click the SxS PRO X Single-Slot Card Reader QSG [English] link and then check the Document Version information. If the version listed is later than this document (revision C), click the Download Now button for the latest version.

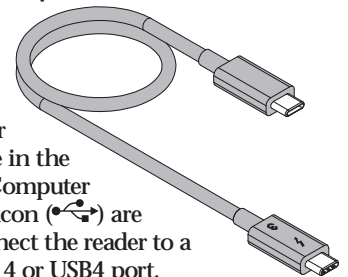
* Must authorize updated driver in Security and Privacy System Preferences (unlock, then allow).

1

Additional Package Contents Description

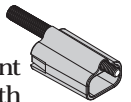
Thunderbolt 3 (40Gbps) Cable

Connect this cable between the Sonnet card reader and one of your computer's Thunderbolt 3 ports (often indicated by a lightning bolt logo), or other Thunderbolt peripheral device in the chain connected to the computer. Computer ports marked with the generic USB icon (⏏) are NOT compatible. You may also connect the reader to a compatible computer's Thunderbolt 4 or USB4 port.



ThunderLok 3 Thunderbolt Connector Retainer Clip

This clip secures the Thunderbolt 3 connector plugged into the Sonnet card reader's Thunderbolt 3 port to prevent accidental cable disconnection. This clip is compatible with Sonnet 0.5- and 0.7-meter Thunderbolt 3 cables, but not with Sonnet 2-meter Thunderbolt 3 cables.



3

Preparing to Use the Sonnet Card Reader With a Windows Computer

1. Update your computer's BIOS to the latest version.
2. Confirm your computer is running, or update to, the latest Thunderbolt software.
3. Confirm your computer is running, or update to, Windows 10 (64-bit Edition Version 1909 or greater).

Driver Information

The drivers that enable the Sonnet SxS PRO X Thunderbolt 3 Single-Slot Card Reader itself to work with your computer are installed as part of macOS and Windows 10. However, to enable support for SxS memory cards (and XQD cards used with an adapter; sold separately), you must download Sony® drivers from Sonnet's website and install them on your computer. Additionally, Windows users should download and install the Sonnet Device Manager Rescan applet.

1. Go to <https://www.sonnettech.com/support/kb/kb.php>
2. Navigate to and click the SxS PRO X Thunderbolt 3 Single-Slot Card Reader link.
3. Click the appropriate links for macOS or Windows software, read the instructions, and then click the Download Now button(s). Follow the directions on the Sony website to download the appropriate drivers.
4. Install the drivers, and then restart your computer.

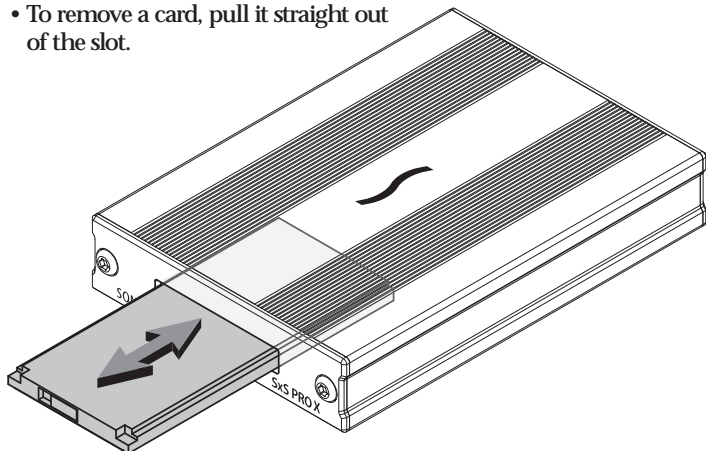
4

Windows Users—Using the Card Reader For the First Time

An *Approve New Thunderbolt™ Devices* window will appear the first time you connect Sonnet card reader to your computer while it is running (or the first time your computer boots with the reader connected). From the drop-down menu select Always Connect, and then click OK.

All Users—Inserting and Removing Cards

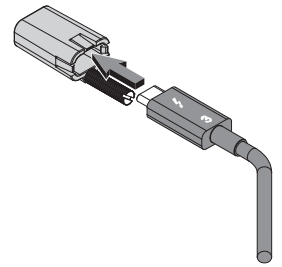
- To insert a card, push it straight into the slot, parallel to the top cover of the reader, until it stops; do not force a card into the slot, as you may damage the card or the slot connector.
- Before removing a card from the reader, be sure to “eject” or “Safely Remove” its mounted volume; otherwise, data on the memory card may be corrupted.
- To remove a card, pull it straight out of the slot.



6

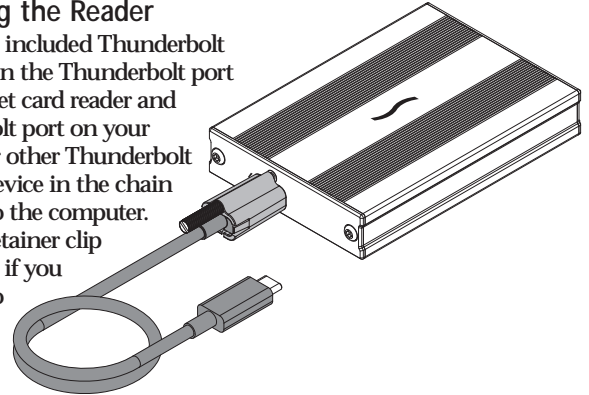


Support Note: To attach the ThunderLok clip to the cable, remove both from their packaging, and then insert the connector through the connector clip as shown. Note that the connector will pass all the way through the clip; when you connect the cable to the reader, the clip will secure the connector.



Connecting the Reader

Connect the included Thunderbolt cable between the Thunderbolt port on the Sonnet card reader and a Thunderbolt port on your computer, or other Thunderbolt peripheral device in the chain connected to the computer. Secure the retainer clip to the reader if you attached it to the cable.



5

Contacting Customer Service

Before contacting Customer Service, please check the Sonnet Web site (www.sonnettech.com) for the latest updates and files. Email requests generally receive the fastest responses, and are usually processed within a 24-hour period during normal business hours, excluding holidays. When you contact Customer Service, please have the following information available:

- Product name
- OS version
- A System Report (macOS) or a Microsoft System Information MSINFO32 (Windows) report (Windows), along with a description of the issue(s) you are encountering with your device

If further assistance is needed, contact **Sonnet Customer Service** at:

E-mail: support@sonnettech.com

Tel: 1-949-472-2772

(Monday–Friday, 9 a.m.–5 p.m. Pacific Time, excluding holidays)

Japan Customers

Contact Sonnet Customer Service Japan at:

E-mail: jp.support@sonnettech.com



©2021 Sonnet Technologies, Inc. All rights reserved. Sonnet, SONNETTECH, the Sonnettech logotype, and ThunderLok are trademarks of Sonnet Technologies, Inc. Mac, the Mac logo, and macOS are trademarks of Apple Inc., registered in the United States and other countries. Thunderbolt and the Thunderbolt logo are trademarks of Intel Corporation in the U.S. and/or other countries. Other product names are trademarks of their respective owners. Product specifications subject to change without notice. QS-TB3-15XSPX-E-C-022621