



SUREFIRE

EAGLE CLAW

Gaming 9-Button Mouse
with RGB

QUICK START GUIDE

How it works

1. Left Key
2. Middle Key
3. Right Key
4. DPI Loop
5. Fire Key
6. Double Click
7. Forward Key
8. Backward Key
9. Show Desktop



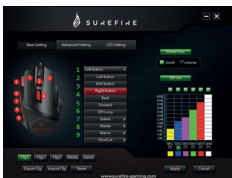
Features

- 9-button macro programmable Gaming Mouse with multi-colour RGB
- High definition optical sensor with adjustable resolution up to 3200 DPI
- The polling rate of 1000 Hz ensures a perfect reactivity of the mouse
- Buttons, lighting, advanced settings – adjustable via software (Windows only)

Software (for Windows only):

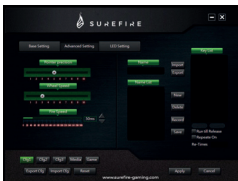
1. To install the software please insert the CD into your disc drive.
2. Start the installation by executing the setup.exe on your CD.
3. Follow the installation process.
4. Plug your mouse into the USB Port on your computer.
5. Start the Software and configure your mouse with your preferred setup.
For further details please see the opposite page.

Base Settings (Set Keysets, Wheel Function and adjust DPI settings)



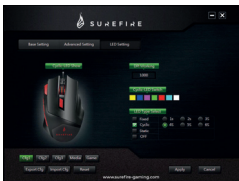
You can configure your key setup in this mode. Click on the button you want to adjust and select the function you want to put on this button of your mouse from the popup menu. Macros have to be defined in the Macro section of the software. You can select multiple key setups as well as store configurations to transfer them for other users. Additionally you can adjust your DPI presets.

Advanced Setting (Adjust Mouse Settings and Record and set Macros)



In the Advanced Settings you can adjust several mouse settings to your personal preference. And store Macros which can be set to your mouse keys.

LED Setting (Lighting Settings)



In the light settings you can adjust or turn off the lighting of your mouse.

Specifications

Number of Buttons: 9 Buttons

Sensor: Optical Sensor

Resolution:

600/800/1200/1600/2400/3200 DPI
(6 DPI stages)

Polling Rate: up to 1000 Hz

Lifetime: 5 million clicks

Acceleration: 70+/-10G

FPS: 6000

Backlight: Multi-colour RGB LED

Settings: Fully programmable via software (Windows only)

Cable Length: 1.50m

Connector: USB plug&play

Product Dimensions: 126mm x 80mm x 39mm

Product Weight: 150g

Limited Warranty Terms

Verbatim GmbH warrants this product to be free from defects in material and workmanship for a period of 2 years from date of purchase.

This warranty excludes batteries. If this product is found to be defective within the warranty period, it will be replaced at no cost to you. You may return it with your original cash register receipt to the place of purchase or contact Verbatim.

Product replacement is your sole remedy under this warranty, and this warranty does not apply to normal wear or to damage resulting from abnormal use, misuse, abuse, neglect or accident, or to any incompatibility or poor performance due to the specific computer software or hardware used.

VERBATIM WILL NOT BE LIABLE FOR DATA LOSS OR ANY INCIDENTAL, CONSEQUENTIAL OR SPECIAL DAMAGES, HOWEVER CAUSED, FOR BREACH OF WARRANTIES OR OTHERWISE.

This warranty gives you specific legal rights and you may also have other rights which vary from state to state or country to country.

Note

Verbatim GmbH may at any time revise the content of this user guide without further notice.

Rights

Copyright © 2020 Verbatim GmbH. No part of this document may be reproduced in any form or by any means, for any purpose, without the express written permission of Verbatim GmbH. All rights reserved. All other brands and product names referenced herein are property of their respective owners.

CE Declaration

Complied the requirements set out in the Council Directive on the Approximation of the Laws of the Member States relating to Electromagnetic Compatibility (2014/30/EC) and Low Voltage Protection 2006/95/EC.

This declaration applies to all specimens manufactured identical to the model submitted for testing/evaluation.

EN 55032:2012+ AC:2013 (Class B)	IEC 61000-4-4: 2013
EN 61000-3-2:2014	IEC 61000-4-5: 2014
EN 61000-3-3:2013	IEC 61000-4-6: 2013
AS/NZS CISPR 32:2013	IEC 61000-4-8: 2009
EN 55024:2010	IEC 61000-4-11: 2004
IEC 61000-4-2: 2008	
IEC 61000-4-3: 2006+ A1:2007+ A2:2010	

RoHS Compliance

This product is in compliance with Directive 2011/65/EU of the European Parliament and of the Council of 18 December 2006, on the restriction of the use of certain hazardous substances in electrical and electronic equipment (RoHS) and its amendments. Substances of Very High Concern (SVHC) including 209 substances contained in Candidate List of June 25th 2020 are not present in any of our current product range above permitted levels.

WEEE Notice

The Directive on Waste Electrical and Electronic Equipment (WEEE), which entered into force as European law on 13th February 2003, resulted in a major change in the treatment of electrical equipment at end-of-life.



The WEEE logo (shown at the left) on the product or on its box indicates that this product must not be disposed of or dumped with your other household waste. For more information about electronic and electrical waste equipment disposal, recovery, and collection points, please contact your local municipal household waste disposal service or shop from where you purchased the equipment.

Technical Support

- Ⓔ If you have any questions about this product, please contact the SureFire support team – www.surefire-gaming.com/support
- Ⓕ Si vous avez des questions au sujet de ce produit, contactez l'équipe d'assistance SureFire à l'adresse www.surefire-gaming.com/support
- Ⓖ Wenn Sie Fragen zu diesem Produkt haben, wenden Sie sich bitte an den SureFire-Support: www.surefire-gaming.com/support
- Ⓣ Per maggiori informazioni su questo prodotto, contattare il Supporto Tecnico di SureFire – www.surefire-gaming.com/support
- Ⓔ Si tiene alguna pregunta sobre este producto, póngase en contacto con el equipo de soporte de SureFire: www.surefire-gaming.com/support
- Ⓣ Caso tenha alguma dúvida sobre este produto, entre em contacto com a equipa de apoio da SureFire - www.surefire-gaming.com/support
- Ⓖ W przypadku jakichkolwiek pytań na temat tego produktu prosimy o kontakt z działem wsparcia firmy SureFire — www.surefire-gaming.com/support
- Ⓔ Если у вас есть какие-либо вопросы об этом продукте, обратитесь в службу технической поддержки SureFire по адресу www.surefire-gaming.com/support
- Ⓔ Máte-li k tomuto produktu nějaké otázky, kontaktujte tým podpory spoločnosti SureFire – www.surefire-gaming.com/support
- Ⓔ Ha bármilyen kérdése van a termékkel kapcsolatban, kérjük, lépjen kapcsolatba a SureFire ügyfélszolgálatával: www.surefire-gaming.com/support
- Ⓔ Če imate vprašanja glede izdelka, se obrnite na skupino za podporo strankam SureFire – www.surefire-gaming.com/support
- Ⓔ/Ⓕ z Ukoliko vas zanima bilo šta u vezi ovog proizvoda, obratite se timu za podršku kompanije SureFire – www.surefire-gaming.com/support

EUROPE/ MIDDLE EAST/ AFRICA:

Verbatim GmbH, Düsseldorf StraÙe 13, 65760 Eschborn, Germany

SureFire is a brand owned by Verbatim GmbH.  **Verbatim.**