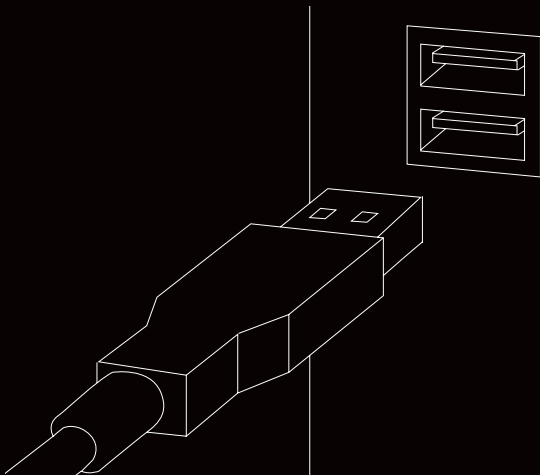


## K4 KEYBOARD SERIES – MANUAL



## PLUG-AND-PLAY

Connect the K4 to the USB port. Driver installation starts automatically.



## SETTINGS AND FUNCTIONS

The K4 features a range of customization options and convenient quick keys. All settings are made directly on the keyboard, by pressing the FN key + the desired setting key.

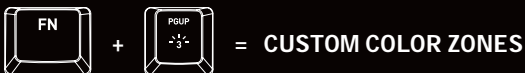
### RGB ILLUMINATION



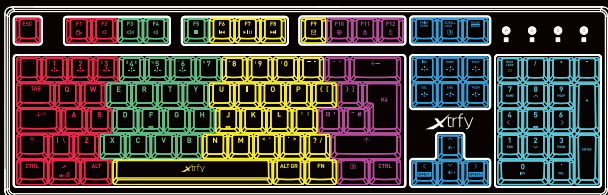
Press FN + INS to start a cycle of shifting backlight colors.



Press FN + HOME repeatedly to switch between 7 different background colors.



Press FN + PGUP for LED illumination in 6 color zones. To set the color of each zone, press FN + PGUP again. When the NUM, CAPS and SCROLL lights in the upper right corner blink, press FN + the numbers 1-6 repeatedly to adjust the colors. When you're done, press FN + PGUP again.





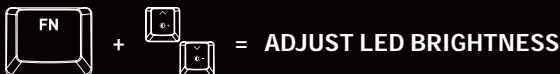
Press FN + DEL repeatedly to switch between two different wave effects.



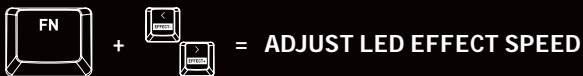
Press FN + END once to start the 7-color breathing effect cycle, and twice to lock the breathing effect at the current color.



Press FN + PGDN to start a multi-color typing effect. (Visible when typing.)




Press FN + the up/down arrow keys to increase/decrease the brightness of the LED lighting.



Press FN + the left/right arrow keys to decrease/increase the speed of the LED effects.

## OTHER USEFUL KEYS AND SHORTCUTS

FN + 	=	Lock Windows key
FN + F1-F8	=	Media controls
FN + F9	=	E-mail
FN + F10	=	Web browser
FN + F11	=	Lock all keys
FN + F12	=	Calculator

## TROUBLESHOOTING

- » Make sure the K4's USB connector is firmly attached to your computer's USB port.
- » Connect to another USB port.
- » Connect to another computer.
- » Factory reset the keyboard by pressing and holding the FN key + backspace for 10 seconds.

## NEED BACKUP?

If you have any questions, we're never more than an email away. Contact us at [support@xtrfy.com](mailto:support@xtrfy.com)

**CHECK OUT MORE XTRFY PRODUCTS AT XTRFY.COM**

**DESIGNED IN  
SWEDEN**



xtrfy