



JLAB AUDIO
JBuddies Studio 2
WIRELESS HEADPHONES

We love that you are rocking JLab!
We take pride in our products and fully stand behind them.



YOUR WARRANTY

All warranty claims are subject to JLab authorization and at our sole discretion. Retain your proof of purchase to ensure warranty coverage.



CONTACT US

Reach out to us at support@jlab.com or visit jlab.com/contact

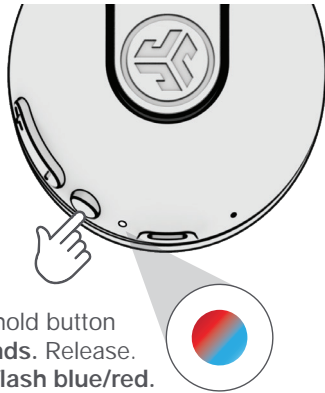
REGISTER TODAY

jlab.com/register

Product updates | How-to tips
FAQs & more

BLUETOOTH

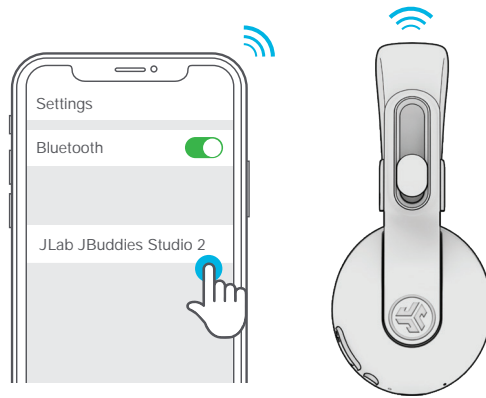
1



Press and hold button for **8 seconds**. Release. Lights will flash **blue/red**.

2

Enter your Bluetooth device settings and select JLab JBuddies Studio 2.

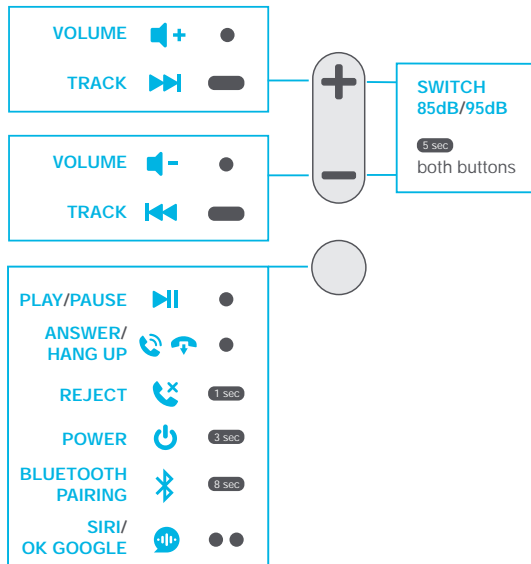


CONTROLS

1x Press ●

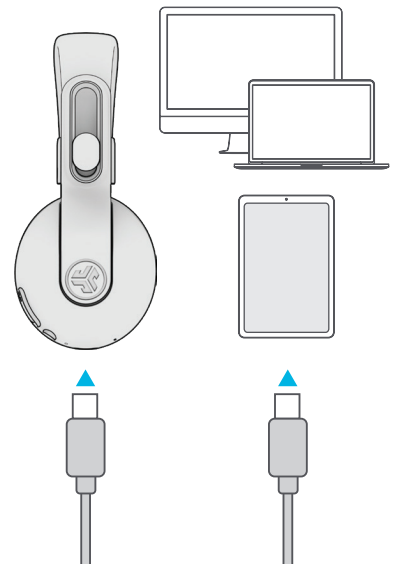
2x Press ●●

Press Hold —

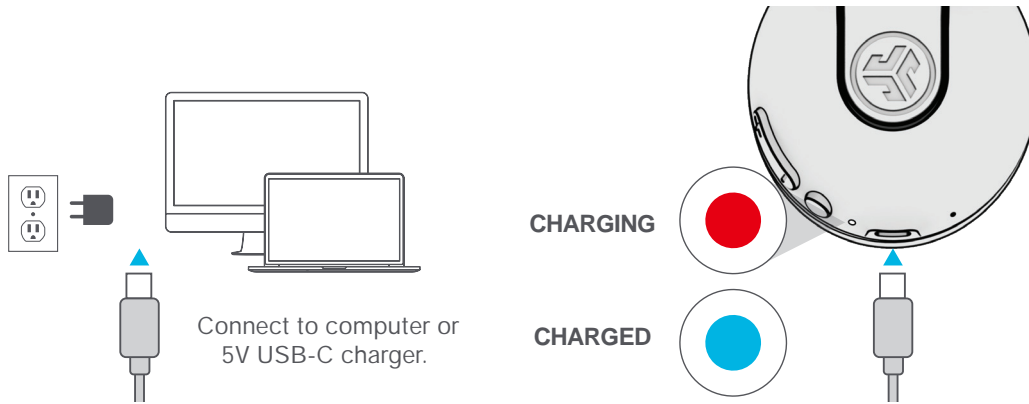


GO WIRED

Connect USB-C cable to computer/tablet/phone for wired mode.

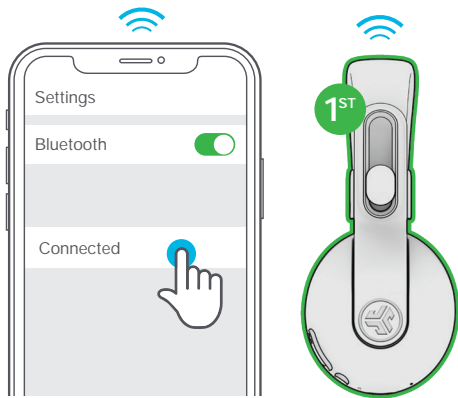


CHARGING

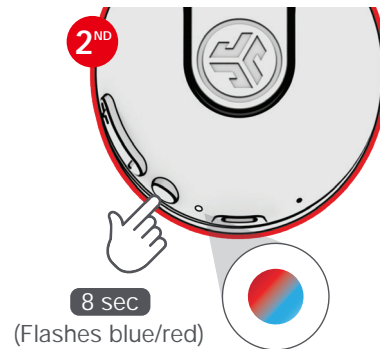


SHARE MODE (SHARE BETWEEN TWO JBuddies Studio 2 Wireless Headphones)

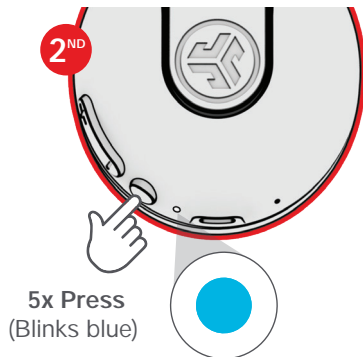
- 1 Connect **FIRST** headphone to device.



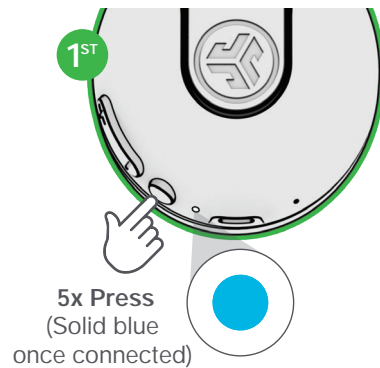
- 2 **SECOND** headphone should be power off.
Press hold until flashing blue/red.



- 3 **SECOND** headphone 5x Press and blinks blue.



- 4 **FIRST** headphone 5x Press to share.



[Shop products](#) | [Product alerts](#) | [Burn-in your headphones](#)

JLab Audio + Burn-in Tool

