



JLAB®  
JBUDS LUX ANC  
HEADPHONES

We love that you are rocking JLab!  
We take pride in our products and fully stand behind them.



**YOUR WARRANTY**

All warranty claims are subject to JLab authorization and at our sole discretion. Retain your proof of purchase to ensure warranty coverage.



**CONTACT US**

Reach out to us at [support@jlab.com](mailto:support@jlab.com) or visit [jlab.com/contact](http://jlab.com/contact)

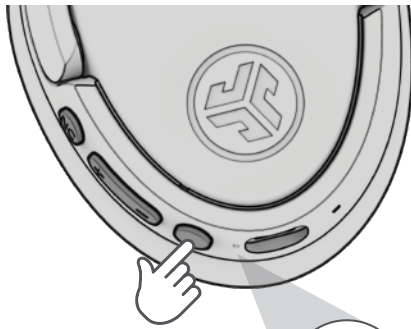
**REGISTER TODAY**

[jlab.com/register](http://jlab.com/register)

Product updates | How-to tips  
FAQs & more

**BLUETOOTH**

1

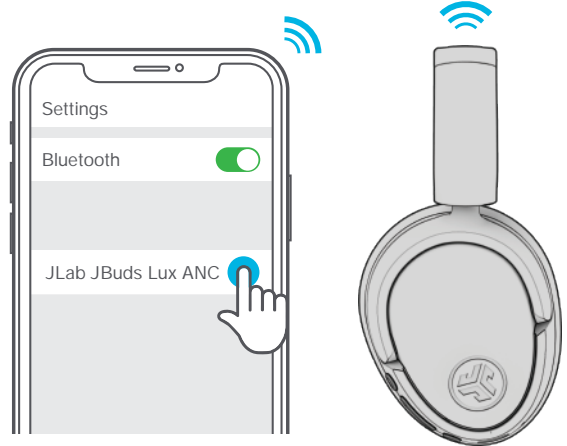


Press and hold button for **8 seconds**. Release. Lights will flash blue/red.



2

Enter your Bluetooth device settings and select JLab JBuds Lux ANC.

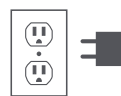
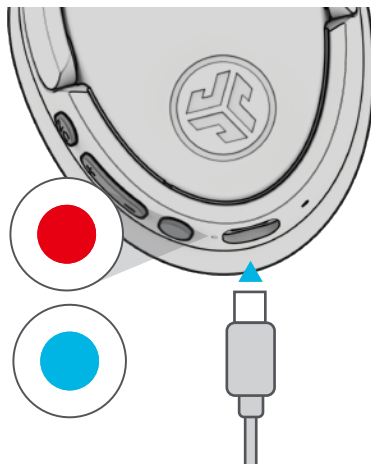
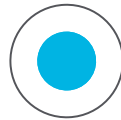


**CHARGING**

CHARGING



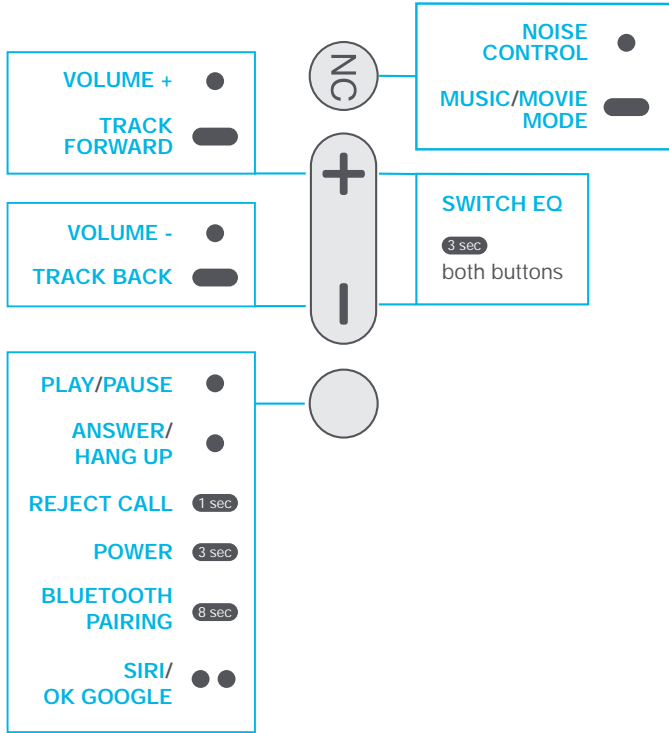
CHARGED



Connect to computer or 5V USB-C charger.

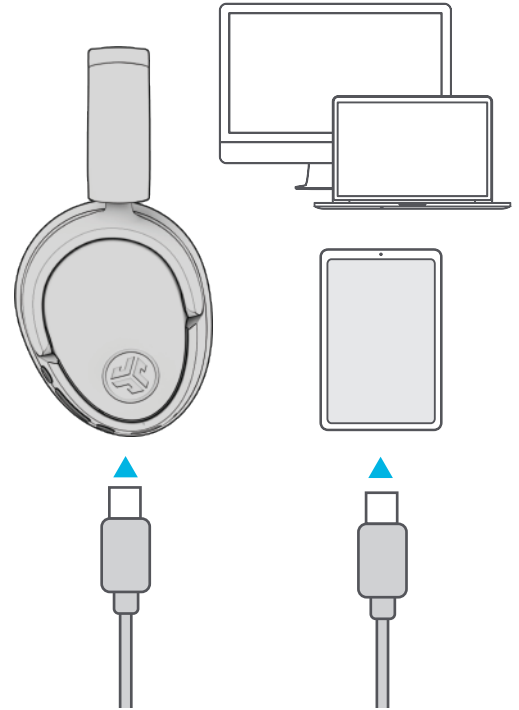
## CONTROLS

1x Press ●    2x Press ●●    Press Hold 



## GO WIRED

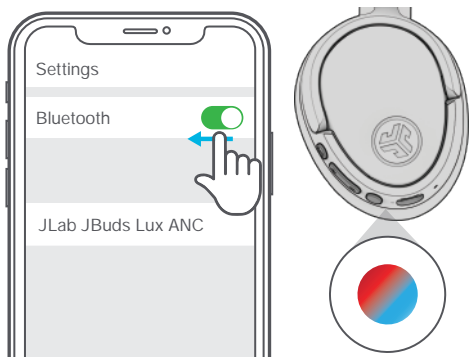
Connect USB-C cable to computer/tablet/phone for wired mode.



## BLUETOOTH MULTIPOINT (CONNECT 2 DEVICES SIMULTANEOUSLY)

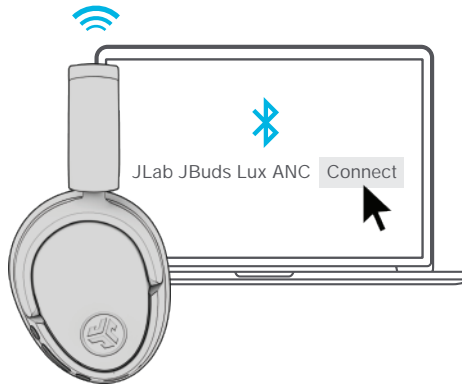
1

Once **FIRST** device is connected, turn off Bluetooth in device settings. JBuds Lux will auto enter Bluetooth Pairing.



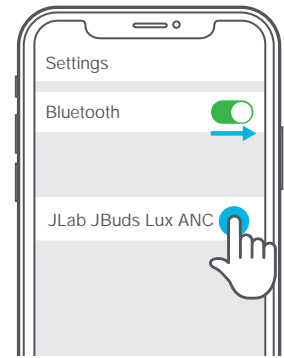
2

Enter your **SECOND** device Bluetooth settings and connect to JBuds Lux.



3

Enter **FIRST** device settings. Turn on Bluetooth and reconnect to JBuds Lux.



## DOWNLOAD THE MOBILE APP

Customize JBuds Lux features and update the latest software.

