



JLAB®
JBUDS LUX ANC
HEADPHONES

We love that you are rocking JLab!
We take pride in our products and fully stand behind them.



YOUR WARRANTY

All warranty claims are subject to JLab authorization and at our sole discretion. Retain your proof of purchase to ensure warranty coverage.



CONTACT US

Reach out to us at support@jlab.com or visit jlab.com/contact

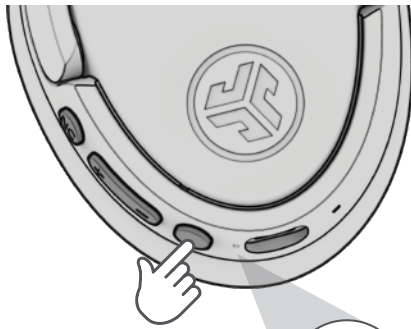
REGISTER TODAY

jlab.com/register

Product updates | How-to tips
FAQs & more

BLUETOOTH

1

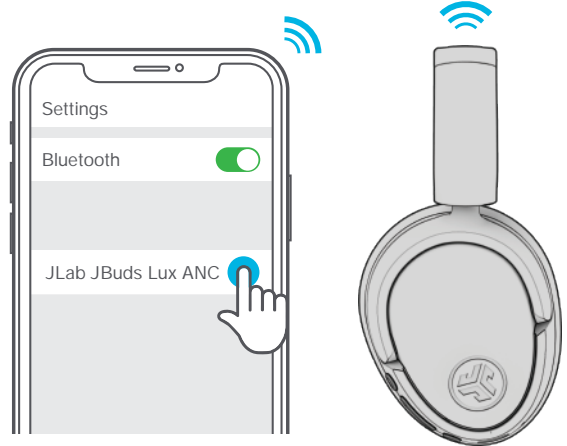


Press and hold button for **8 seconds**. Release. Lights will flash blue/red.



2

Enter your Bluetooth device settings and select JLab JBuds Lux ANC.

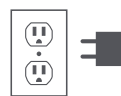
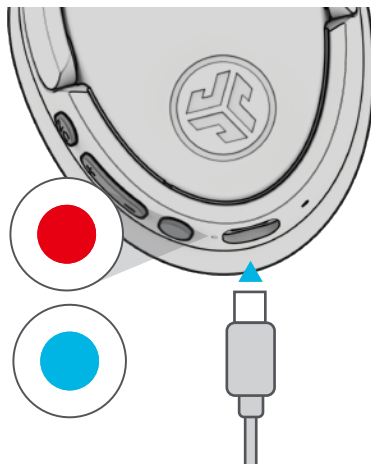
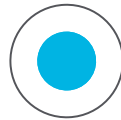


CHARGING

CHARGING



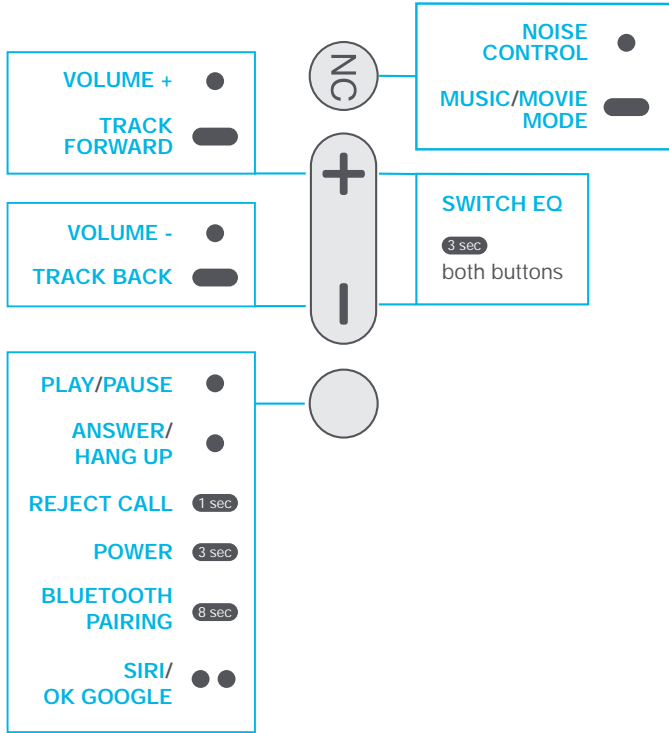
CHARGED



Connect to computer or 5V USB-C charger.

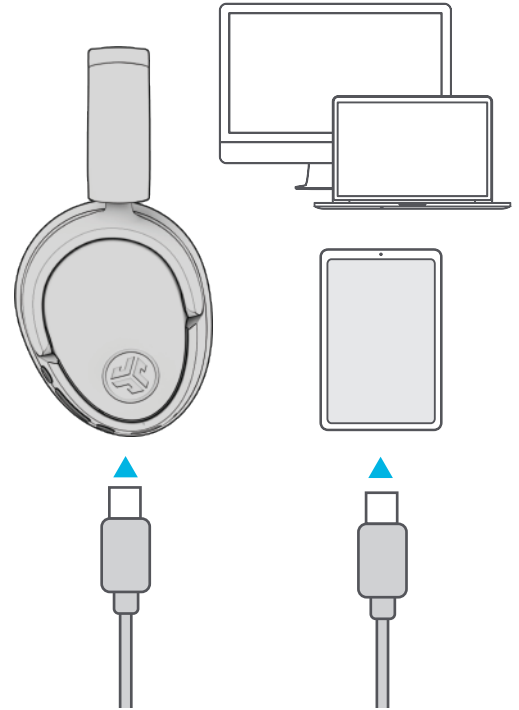
CONTROLS

1x Press ● 2x Press ●● Press Hold 



GO WIRED

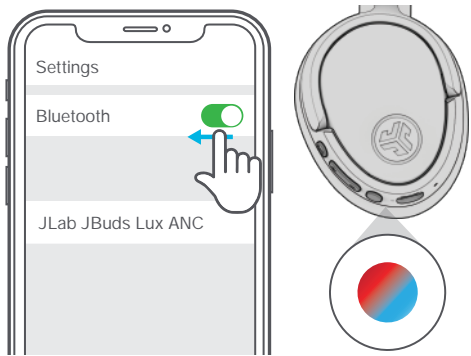
Connect USB-C cable to computer/tablet/phone for wired mode.



BLUETOOTH MULTIPOINT (CONNECT 2 DEVICES SIMULTANEOUSLY)

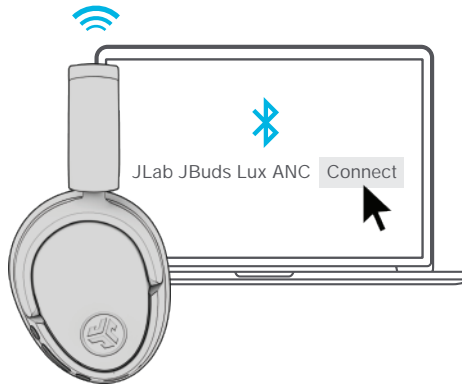
1

Once **FIRST** device is connected, turn off Bluetooth in device settings. JBuds Lux will auto enter Bluetooth Pairing.



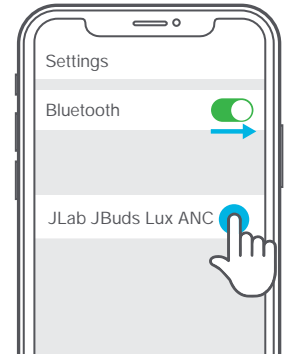
2

Enter your **SECOND** device Bluetooth settings and connect to JBuds Lux.



3

Enter **FIRST** device settings. Turn on Bluetooth and reconnect to JBuds Lux.



DOWNLOAD THE MOBILE APP

Customize JBuds Lux features and update the latest software.

