



JLAB
 JBUDS
 ERGONOMIC
 MOUSE

We love that you are rocking JLab!
 We take pride in our products and fully stand behind them.



YOUR WARRANTY

All warranty claims are subject to JLab authorization and at our sole discretion. Retain your proof of purchase to ensure warranty coverage.



CONTACT US

Reach out to us at support@jlab.com or visit jlab.com/contact

REGISTER TODAY

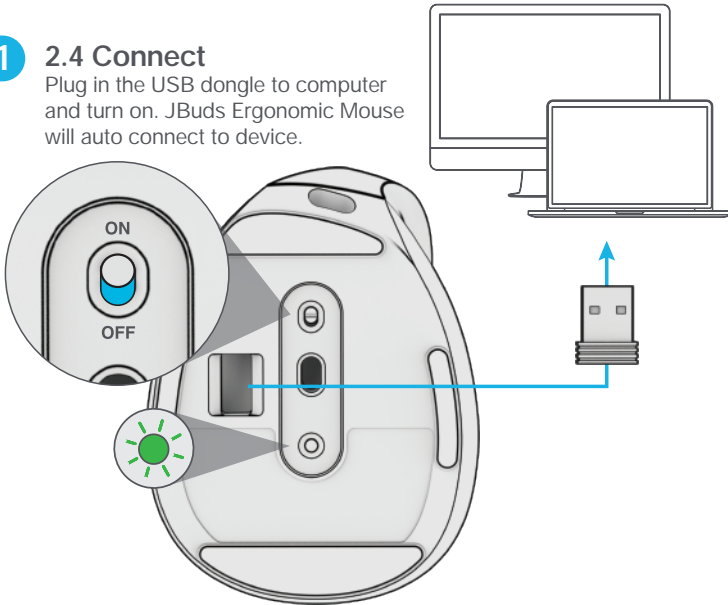
jlab.com/register

Product updates | How-to tips
 FAQs & more

SETUP

1 2.4 Connect

Plug in the USB dongle to computer and turn on. JBuds Ergonomic Mouse will auto connect to device.



2 Bluetooth Connect

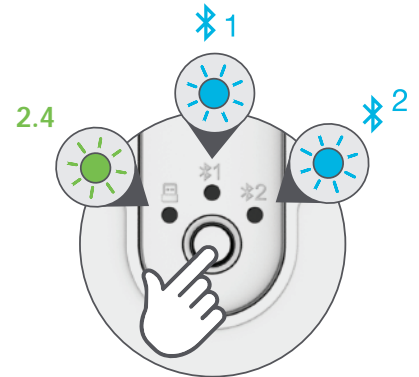
Quick Press to toggle to **1** or **2**
 Then **Press Hold** to enter Pairing Mode (Flashing light)
 Select "JBuds Ergo Mouse" in device settings

QUICK PRESS
 TO TOGGLE

PRESS HOLD
 TO PAIR

PAIRING
 MODE:
 Flashing

PAIRED:
 Solid

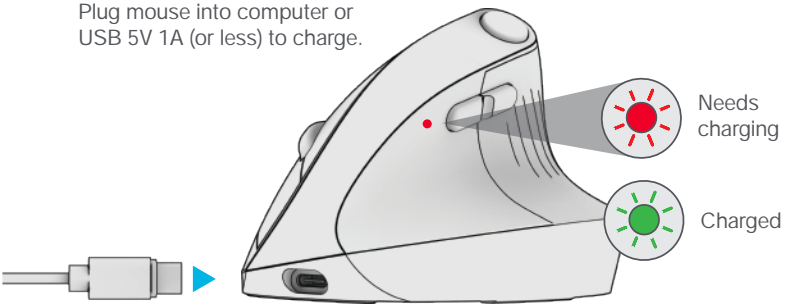


Have a JLab Epic or JBuds Keyboard?

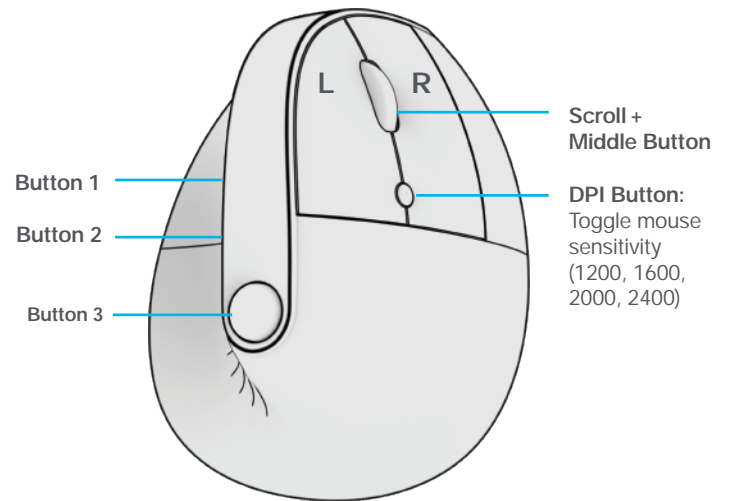
Scan the QR code to learn how to pair both your devices with just one dongle.

CHARGING

Plug mouse into computer or USB 5V 1A (or less) to charge.



INTERFACE



Download JLab Work App (for Mac and PC) to fully customize JBuds Ergonomic Mouse at:

[JLAB.COM/SOFTWARE](https://www.jlab.com/software)



(Plug 2.4 dongle in to customize software)



[Shop products](#) | [Product alerts](#) | [Burn-in your headphones](#)

JLab Store + Burn-in Tool

