



We love that you are rocking JLab!  
We take pride in our products and fully stand behind them.

JLAB®  
STUDIO PRO ANC  
HEADPHONES



#### YOUR WARRANTY

All warranty claims are subject to JLab authorization and at our sole discretion. Retain your proof of purchase to ensure warranty coverage.



#### CONTACT US

Reach out to us at [support@jlab.com](mailto:support@jlab.com) or visit [jlab.com/contact](http://jlab.com/contact)

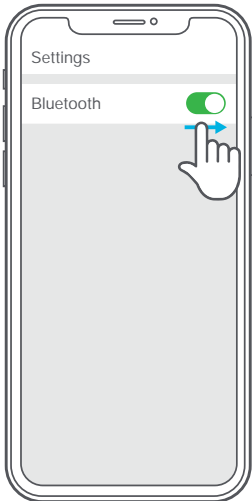
### REGISTER TODAY

[jlab.com/register](http://jlab.com/register)

Product updates | How-to tips  
FAQs & more

## FIRST TIME SETUP: BLUETOOTH PAIRING

- 1 Turn on the Bluetooth in your device settings.



- 2 Press and hold button for **8 seconds**. Release. Lights will **flash blue/red**.



- 3 Select "JLab Studio Pro ANC" in your device settings to connect.



## PAIRING NEW / ADDITIONAL DEVICES:

Turn OFF Bluetooth on your previously paired device and turn ON Bluetooth on new device. Repeat **FIRST TIME STEUP** process for new devices.

#### Notes:

- Bluetooth is a wireless radio technology, which means it is sensitive to objects between the headphone and the connected device. The headphone is designed to be used within 33 feet (10 meters) of a connected device, with no major objects in between (walls, etc.).
- Once successfully connected, the headphone will memorize your device and automatically pair when turned on in the future. Only one device may be connected at a time. To pair a different device, first unpair the current one through its Bluetooth settings.
- If for any reason Bluetooth connection is lost, manually reconnect your Bluetooth device.

## BUTTON FUNCTIONS

**VOLUME UP:** Press once  
**TRACK FORWARD:** Press & hold 2+ seconds

**VOLUME DOWN:** Press once  
**TRACK BACKWARD:** Press & hold 2+ seconds

**POWER ON / OFF:** Press & hold 2+ seconds

**PLAY / PAUSE / ANSWER / HANG UP CALLS:**  
Press once

**REJECT INCOMING CALL:** Press & hold 1 second

**ACTIVATE SIRI (iOS) OR "OK GOOGLE" (ANDROID):**  
Press twice

**BLUETOOTH PAIRING:** See FIRST TIME SETUP



**SWITCH EQ:**  
Press and hold both buttons simultaneously for 3+ seconds

 **JLab SIGNATURE**  
(One Beep)

JLab C3™ signature sound with amplified vocals and bass

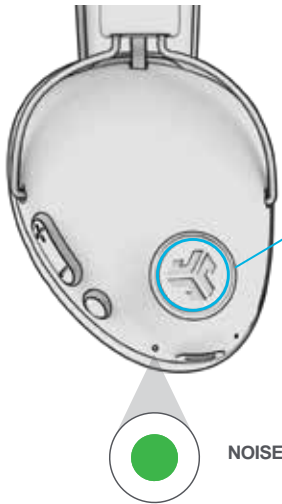
 **BALANCED**  
(Two Beeps)

Even sound with no additional sound enhancements

 **BASS BOOST**  
(Three Beeps)

Amplified bass and sub-bass

## ACTIVE NOISE CONTROL



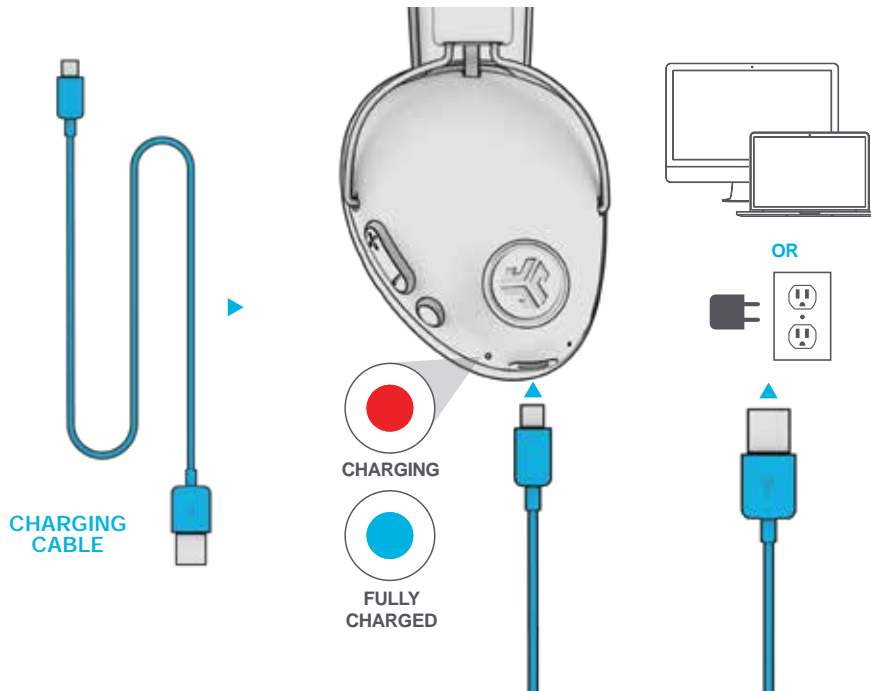
**CONNECTED TO BLUETOOTH:**  
**CYCLE BE AWARE / ANC HIGH / ANC LOW / ANC OFF:**  
Press once

**CONNECTED TO AUX:**  
Press and hold 2+ seconds to power ON ANC.  
**CYCLE BE AWARE / ANC HIGH / ANC LOW / ANC OFF:**  
Press once

 **NOISE CONTROL ON**

## CHARGING

Connect to computer or USB 5v 1A (or less) output device.



## AUX INPUT



### NOTE:

- The ANC function can work when connected with AUX INPUT. Press and hold 2+ seconds the ANC button to power ON ANC.
- The AUX INPUT will override your Bluetooth device connection. Unplug and press power button 2+ seconds to revert back to Bluetooth.
- The button functions for your Bluetooth device will not work when AUX INPUT is connected.
- The volume will be dependent on your AUX device settings. Adjust accordingly.

## CAUTIONS

- Avoid getting moisture or liquids on the headphone cups.
- Avoid extreme heat, cold, and humidity.
- Avoid dropping or crushing headphones, stressing the cable by rapid pulling or extreme force, or bending the cable at a sharp angle.
- Wax may build up in headphone cups, lowering the sound quality. Carefully remove the wax with a cotton swab or other small tool to improve the sound quality.
- If you experience discomfort or pain, try lowering the volume or discontinuing use temporarily.
- If you experience regular discomfort while using this product, discontinue use and consult your physician.
- We recommend you treat your headphones as you would a nice pair of sunglasses and keep them in safe location when not in use.



[Shop products](#) | [Product alerts](#) | [Burn-in your headphones](#)

JLab Store + Burn-in Tool

