



JLAB®  
JBUDS MINI  
EARBUDS

We love that you are rocking JLab!  
We take pride in our products and fully stand behind them.



**YOUR WARRANTY**

All warranty claims are subject to JLab authorization and at our sole discretion. Retain your proof of purchase to ensure warranty coverage.



**CONTACT US**

Reach out to us at [support@jlab.com](mailto:support@jlab.com) or visit [jlab.com/contact](http://jlab.com/contact)

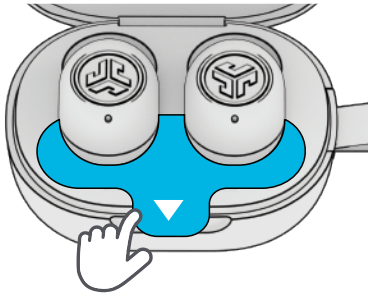
**REGISTER TODAY**

[jlab.com/register](http://jlab.com/register)

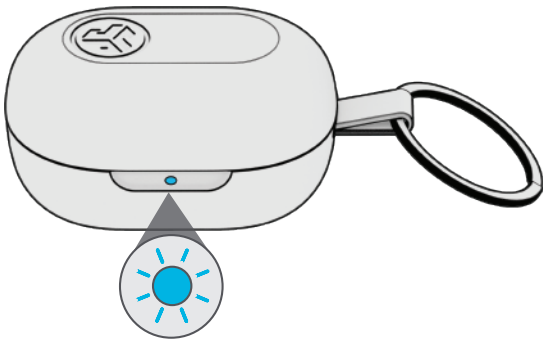
Product updates | How-to tips  
FAQs & more

**PAIR UP**

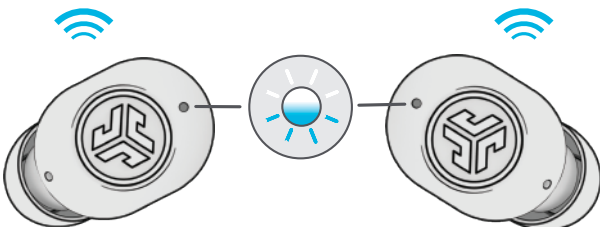
**1** Remove pull tab. Close case door with earbuds.



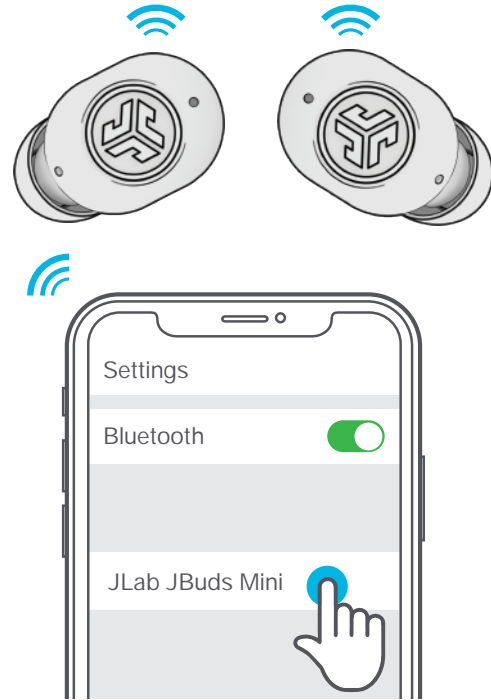
**2** Light on case indicates charge. Remove earbuds from case.



**3** One earbud blinks blue/white = Ready to Pair

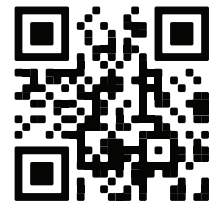


**4** Select "JLab JBuds Mini" in your Bluetooth settings to connect.



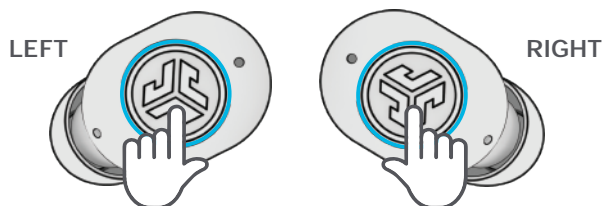
Voice prompt "Bluetooth connected" followed by **lights off** will indicate connection.

Customize JBuds Mini features with the JLab App ▶



SCAN ME

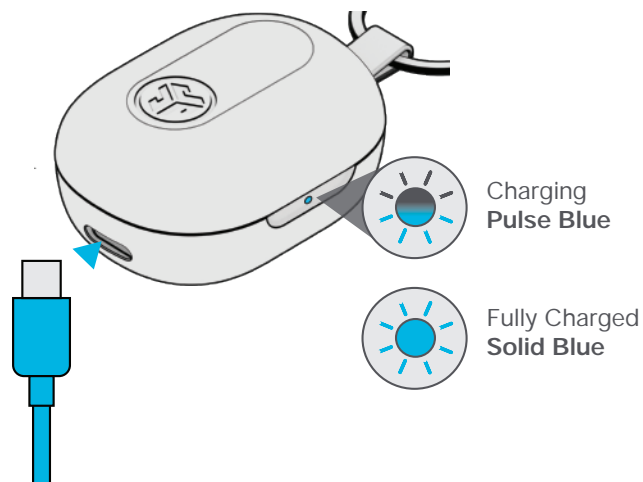
## GO AHEAD, PRESS THE BUTTON



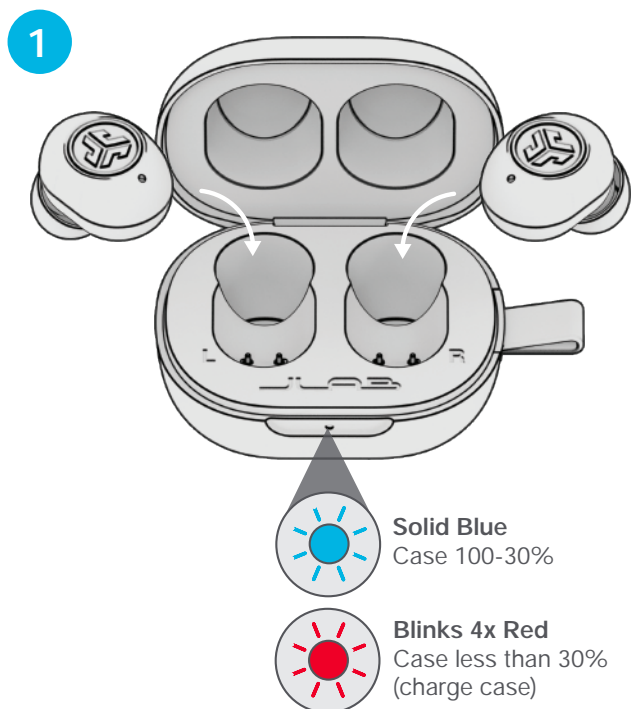
- |   |                                     |
|---|-------------------------------------|
| <b>VOLUME DOWN:</b> 1x                  | <b>VOLUME UP:</b> 1x                |
| <b>VOICE ASSISTANT:</b> 2x              | <b>PLAY/PAUSE:</b> 2x               |
| <b>MUSIC/MOVIE MODE:</b><br>Press Hold  | <b>TRACK FORWARD:</b><br>Press Hold |
| <b>EQ CHANGE:</b> 3x                    | <b>BE AWARE:</b> 3x                 |
| <b>ANSWER CALL:</b> 1x                  |                                     |
| <b>HANG UP CALL:</b> 2x                 |                                     |
| <b>REJECT INCOMING CALL:</b> Press Hold |                                     |

## GET CHARGED (CASE)

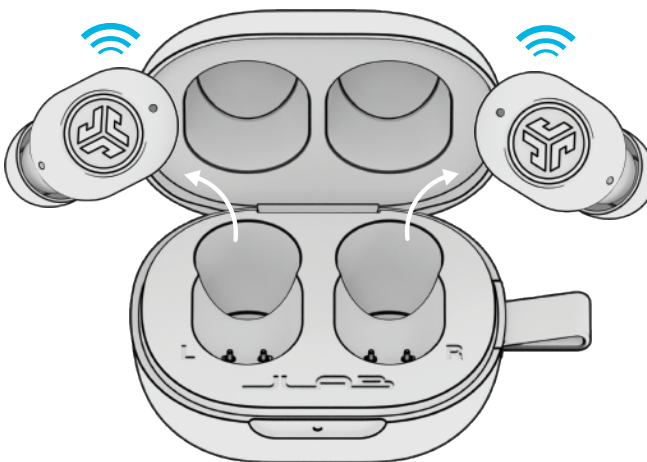
Connect the JBuds Mini to computer or USB 5V 1A (or less) output device.



## GET CHARGED (EARBUDS)



**2** Earbuds will auto power on and connect when removed.



## THE RIGHT SOUND FOR EVERY MOMENT

### EQUALIZER MODES



**"JLab SIGNATURE"**  
JLab C3™ signature sound with amplified vocals and bass  
**BEST FOR**  
Best option for most music  
Pop, rock, country, electronic and more

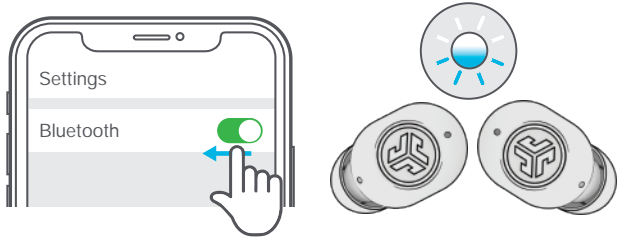
**"BASS BOOST"**  
Amplified bass and sub-bass  
**BEST FOR**  
Working out, sport and fitness  
Hip hop, rap, electronic

**"BALANCED"**  
Even sound with no additional sound enhancements  
**BEST FOR**  
Podcasts, Audiobooks  
Classical music

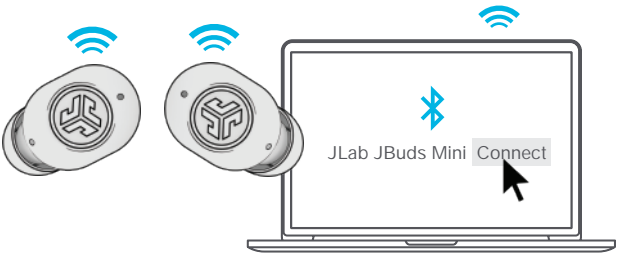
**"CUSTOM"**  
Personalize your EQ through the JLab App.

## MULTIPOINT

- 1 Once **FIRST** device is connected, turn off Bluetooth in device settings. JBuds Mini will auto enter Bluetooth Pairing.



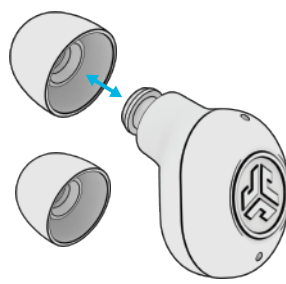
- 2 Enter your **SECOND** device Bluetooth settings and connect to JBuds Mini.



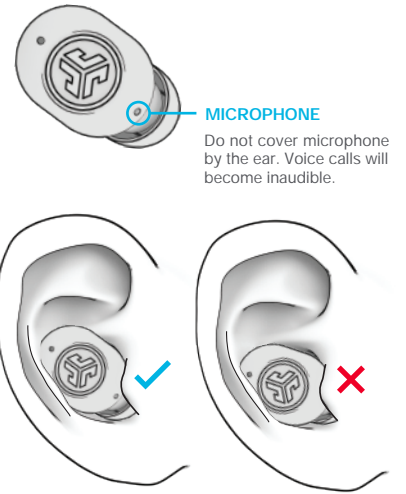
- 3 Enter your **FIRST** device Bluetooth settings. Turn on Bluetooth and connect to JBuds Mini.



## FIND YOUR FIT



Try all ear tips for best fit and proper seal.



## QUICK TIPS

- The left or right earbud can be used independently for music and phone calls. Simply choose one and take out of the case to connect.
- Fully dry off earbuds before putting in the charging case to avoid any damage to the case. The earbuds are sweat/water resistant but the case is not.
- Choosing the correct ear tip makes a significant improvement in audio quality due to proper seal for the driver. Try all ear tips for best results.

## WARNING

Fully dry off the earbuds before putting in the charging case to avoid any damage to the case.

The earbuds are sweat/water resistant but the case is not.



## TROUBLESHOOTING

### CONNECTION FAILURE OR EARBUDS DISCONNECTED FROM EACH OTHER (MANUAL RESET)

- 1 Keep the earbuds in the charging case and forget "JLab JBuds Mini" from your Bluetooth device settings.
- 2 Quick tap 7x on one earbud in charging case. Earbud blinks blue 4 times.
- 3 Quick tap 7x on other earbud in charging case. Earbud blinks blue 4 times.
- 4 Take both earbuds out of the charging case. One earbud will be solid white and other will blink blue/white indicating ready to pair to your device.

Instructional videos at: [JLAB.COM/MANUALS](https://www.jlab.com/manuals)

## DOWNLOAD THE APP

Customize JBuds Mini features and update the latest software.

Download the **JLab App** in Apple/Google Play Store.



SCAN ME



[Shop products](#) | [Product alerts](#) | [Burn-in your headphones](#)

JLab Store + Burn-in Tool



[JLAB.COM](https://www.jlab.com)