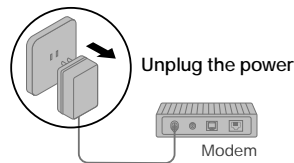


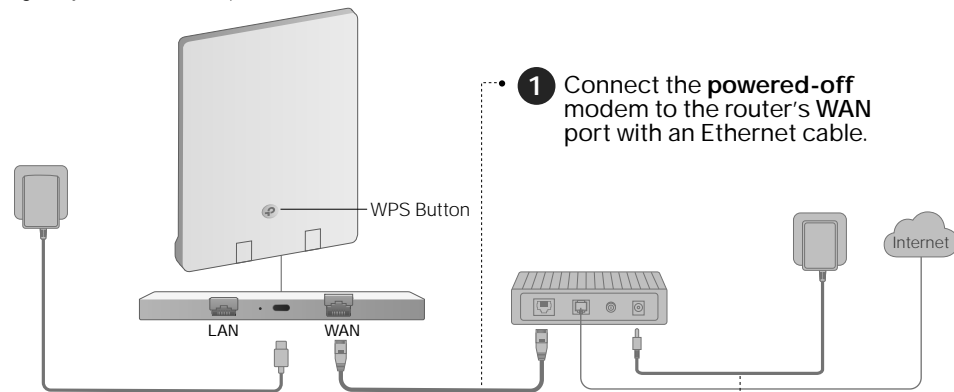
1 Connect the Hardware

! Unplug the power to turn off your modem, if any, and remove the backup battery if it has one.



If your internet comes from an Ethernet outlet instead of a DSL / Cable / Satellite modem, connect the router's **WAN port** to it, then follow steps 3 and 4 to complete the hardware connection.

*Image may differ from actual product.



1 Connect the **powered-off** modem to the router's **WAN port** with an Ethernet cable.

2 Power on the modem, and then wait about **2 minutes** for it to restart.

3 Connect the router to a power source via the provided power adapter.

4 Verify the LED is solid red or blue before moving on.

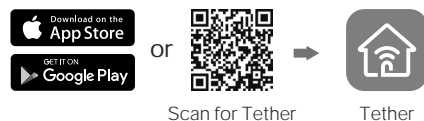


On (red or blue)

2 Set Up the Network

Method ONE: Via TP-Link Tether App

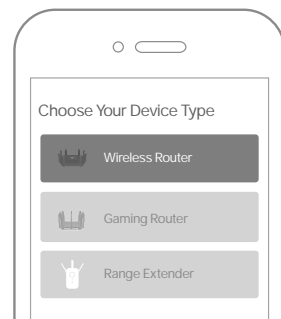
1. Download the Tether app.



2. Open the Tether app and log in with your TP-Link ID.

Note: If you don't have an account, create one first.

3. Tap the **+** button in the Tether app and select **Wireless Router > Standard Routers**. Follow the steps to complete the setup and connect to the internet.



😊 Enjoy the internet !

To enjoy a more complete service from TP-Link, bind your TP-Link ID to the router.

Method TWO: Via a Web Browser

1. Connect your device to the router wirelessly or with an Ethernet cable.

The default wireless network names (SSIDs) and password are printed on the label at the back of the router.



2. Launch a web browser, and enter <http://tplinkwifi.net> or <http://192.168.0.1> in the address bar. Create a password to log in.

Note: If the login window does not appear, please refer to Q1 of **Need Help?** in this guide.



3. Follow the step-by-step instructions to set up the internet connection and register for the TP-Link Cloud service.

😊 Enjoy the internet !

3 Mount the Router on the Wall

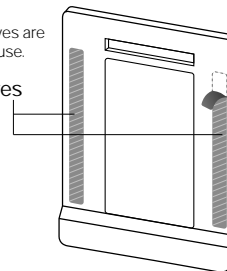
The back area of the router is used for heat dissipation. It works best when the router is mounted on a wall.

Method ONE: Via 3M Adhesives*

1. Tear off the protective paper from the 3M adhesives on the back of the router.

*2 extra 3M adhesives are provided for future use.

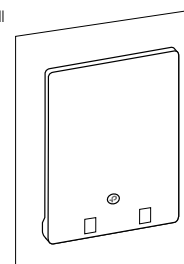
3M Adhesives



2. Adhere the router vertically to a flat surface that is out of children's reach.

Note: This equipment shall be installed at a height of less than 2 meters.

CAUTION: 3M adhesives may damage the wall or leave adhesive residue on the wall when removed.

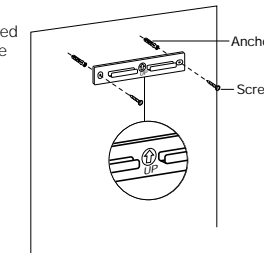


Method TWO: Via mounting bracket

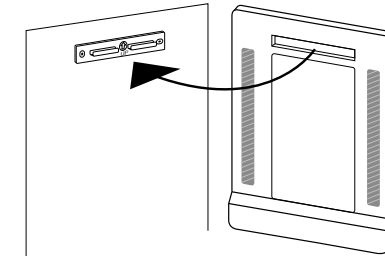
1. Mount the bracket on the wall in the correct direction with the two provided anchors and screws.

Tip: You can use the included spirit level to help install the bracket horizontally.

The air bubble in the level is centered.



2. Attach the router on the bracket as shown below.



! Caution, Hot Surface

- The device should be used within a temperature range of 0°C-40°C.
- When the router is working, the temperature on its back is high. Do not touch the router with bare hands, and do not stick or directly mount the router to wallpaper, paper, wood, glass, non-heat-resistant paint, foam board, flammable and explosive materials, etc, to avoid burns, discoloration, breakage or other accidental injury.
- It is recommended to mount the router to flat and smooth painted walls, tile walls, and other objects. Do not stick it on metal surfaces, so as not to shield the wireless signal.

TP-Link HomeShield

TP-Link HomeShield premium security services keep your home network safe with cutting-edge features. Download the Tether app to enjoy.

Network Protection

Detects cyber threats to keep your privacy and connected devices well protected.

Parental Controls

Manage online time and block inappropriate content to maintain healthy online habits.

Quality of Service (QoS)

Prioritize your bandwidth needs for a better networking experience.

Comprehensive Reports

Gain full statistics and insights to help you know your home network better.

For more details, visit <https://www.tp-link.com/homeshield/>.

EasyMesh-Compatible

You can experience strong, stable, and seamless wireless connections throughout your home with EasyMesh.

● Seamless Roaming

Connects mobile devices to your routers or extenders that provide the best coverage. Devices compatible with EasyMesh also share a single Wi-Fi name so you stay connected in every room.

● One-Click Settings

Within 2 minutes, press the WPS button on the main router and the satellite device, then the EasyMesh network is all set up. TP-Link routers in factory settings can be connected to form an EasyMesh network directly without any redundant setup.

● Flexible Scalability

Flexibly scale your home networking with different vendors,* different topologies, different Protocols and different product categories.

*Failure may be due to firmware conflicts of different vendors. A better network connection can be established between all APs from TP-Link.



Scan for Setup Video

For more information, visit <https://www.tp-link.com/easymesh/>

LED Explanation

Quickly Pulsing Blue	The system is starting up or the router is being upgraded. Do not disconnect or power off your router.
Solid Blue	The router is working normally.
Slowly Pulsing Blue	WPS connection is being established. Do not disconnect or power off your router.

Off	The router is not powered on.
Solid Red	WAN port is connected but there is no internet connection.
Slowly Pulsing Red	WAN port is not connected.
Quickly Pulsing Red	WPS connection failed.

Need Help?

Q1. What should I do if I can't access the web management page?

- Reboot your router and try again.
- If the computer is set to a static IP, change its settings to obtain an IP address automatically.
- Verify that <http://tplinkwifi.net> is correctly entered in the web browser. Alternatively, enter <http://192.168.0.1> or <http://192.168.1.1> in the web browser.
- Use another web browser and try again.
- Disable and enable the network adapter in use.

Q2. What should I do if I can't access the internet?

- Power off your modem for about 5 minutes, then power it on and check the internet. If your modem has more than one Ethernet port, keep other ports unconnected.
- Check if the internet is working normally by connecting a computer directly to the modem via an Ethernet cable. If it is not, contact your internet service provider.
- Log in to the web management page, and go to the **Network Map** page to check whether the internet IP address is valid or not. If it's valid, go to **Advanced > Network > Internet**, click **Advanced Settings**, select **Use the Following DNS Addresses**, set the primary DNS to 8.8.8.8, and set the secondary DNS to 8.8.4.4. If it is not, check the hardware connection or contact your internet service provider.
- For cable modem users, log in to the web management page of the router and go to **Advanced > Network > Internet > MAC Clone**. Select **Clone Current Device MAC** and click **SAVE**. Then reboot both the modem and the router.

Q3. What should I do if I forget my wireless password?

- If you have not changed the default wireless password, it can be found on the label at the bottom of the router.
- Connect a computer directly to the router using an Ethernet cable. Log in to the router's web management page at <http://tplinkwifi.net>, and go to the **Wireless** page to retrieve or reset your wireless password.

Q4. What should I do if I forget my web management page password?

- If you are using a TP-Link ID to log in, click **Forgot password** on the login page and then follow the instructions to reset it.
- Alternatively, press and hold the **Reset** button at the bottom for about 6 seconds until the LED blinks. Then visit <http://tplinkwifi.net> to create a new login password.

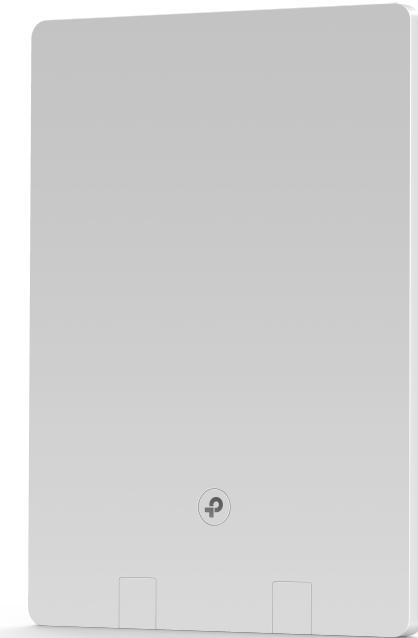
Q5. What should I do if the router does not turn on when connected to a power source?

- Make sure the power source can supply power normally.
- Make sure you are using the included power adapter.

- Keep the device away from water, fire, humidity or hot environments.
- Do not attempt to disassemble, repair, or modify the device. If you need service, please contact us.
- Do not use any other chargers than those recommended.
- Do not use damaged charger or USB cable to charge the device.
- Do not use the device where wireless devices are not allowed.
- Adapter shall be installed near the equipment and shall be easily accessible.
- Do not use the included power adapter to charge other devices.

© For technical support, replacement services, user guides, and other information, please visit <https://www.tp-link.com/support>.

©2023 TP-Link 7106510327 REV1.0.2



Quick Installation Guide

AX3000 Wi-Fi 6 Air Router

