

Dismantling Information for Use by Professional Recyclers

ORIGINAL MANUAL ISSUE DATE: 2022.04

Model:

KD-43X80K	KD-50X80K	KD-55X80K	KD-65X80K
KD-43X81K	KD-50X81K	KD-55X81K	KD-65X81K
KD-43X82K	KD-50X82K	KD-55X82K	KD-65X82K

9-888-900-42

LCD TV

SONY®

Sony EMCS (M) Sdn. Bhd., HES-M

© 2022.04

Conditions of Use:

- (1) Please use this information only for the purpose of performing repair and recycling Sony products. Using this information for any purpose other than the purpose described foregoing is forbidden.
- (2) Do not copy, replicate, reproduce, alter, translate, transmit, sell, lease, or distribute this information in whole or in part without the prior written permission of the author.

Revision of Information:

This information may be changed or updated at any time without any prior notice. Please confirm that this information is up-to-date before using it.

MODEL LISTS

Model	Remote	Destination
KD-43X80K	RMT-TX800U / RMT-TX440E	CEI , UKA
KD-43X81K	RMT-TX800U / RMT-TX440E	CEI , UKA
	RMT-TX800U	RU3
KD-43X82K	RMT-TX800U / RMT-TX440E	CEI
KD-50X80K	RMT-TX800U / RMT-TX440E	CEI , UKA
KD-50X81K	RMT-TX800U / RMT-TX440E	CEI , UKA
	RMT-TX800U	RU3
KD-50X82K	RMT-TX800U / RMT-TX440E	CEI
KD-55X80K	RMT-TX800U / RMT-TX440E	CEI , UKA
KD-55X81K	RMT-TX800U / RMT-TX440E	CEI , UKA
	RMT-TX800U	RU3
KD-55X82K	RMT-TX800U / RMT-TX440E	CEI
KD-65X80K	RMT-TX800U / RMT-TX440E	CEI , UKA
KD-65X81K	RMT-TX800U / RMT-TX440E	CEI , UKA
	RMT-TX800U	RU3
KD-65X82K	RMT-TX800U / RMT-TX440E	CEI

RMT-TX800U



RMT-TX440E



TOOLS & EQUIPMENTS

1 LIST OF ITEMS TO BRING

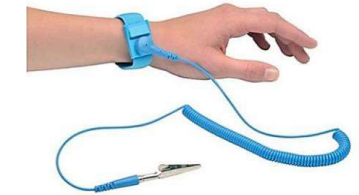
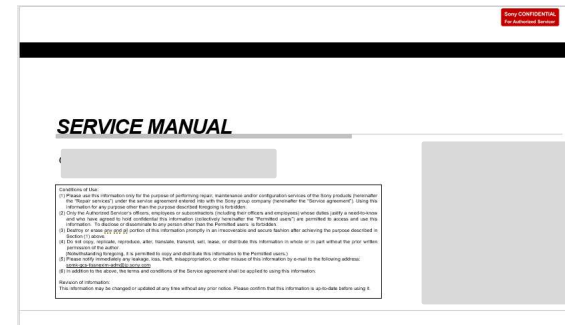
- i. Screwdriver (e.g., #2 Phillips Screwdriver)
- ii. Multimeter
- iii. ESD Wrist Straps
- iv. Metal Washer (Flat) or Coin (for remove Rear Cover)
- v. Ruler (for remove Rear Cover)
- vi. Service Manual (Unique) (for remove & replace details)

2 OPTIONAL EQUIPMENTS

- i. Screwdriver (e.g., #0 Phillips Screwdriver)
- ii. Parts Tray for loose screws and small items
- iii. Flashlight
- iv. Service Manual

3 PREPARATION BEFORE REPAIRS

Before you begin, unplug the TV from the wall outlet and stand it up on a level work surface to begin removing the Rear Cover. If you are working on a TV that was wall-mounted, and does not have a stand, simply place the TV faced-down on top of a thick blanket, on a large/flat surface, or you may be able to lean it up against a wall near a wall outlet.



Thickness: approx. 1.5mm
Diameter: 20~25mm
(wrap in tape (L=50mm))

Plastic or Metal Ruler
(In case of Metal ruler, wrap in tape (L=50mm) for prevent scratches)



SAFETY NOTES

1-1. Warnings and Caution.

- 1) CAUTION: These servicing instructions are for use by qualified service personnel only.
- 2) To reduce the risk of electric shock, do not perform any servicing other than that stated in the operating instructions unless you are qualified to do so.
- 3) WARNING!!: An isolation transformer should be used during any service to avoid possible shock hazard, because of live chassis. The chassis of this receiver is directly connected to the ac power line.

The replaceable fuse should be in the neutral of the mains supply. When replacing the fuse, the mains must be disconnected to de-energize the phase conductors.

(*Except AC ADAPTOR, Because it does not carry out replacing an internal fuse.)

- 4) CARRYING THE TV: be sure to follow these guidelines to protect your property and avoid causing serious injury:

- Carry the TV with an adequate number of people; larger size TVs require two or more people.
- Correct hand placement while carrying the TV is very important for safety and to avoid damages.

- 5) SAFETY-RELATED COMPONENT WARNING!!: Components identified by shading and ! mark on the exploded views, and in the parts list are critical for safe operations. Replace these components with Sony parts whose part numbers appear as shown in this manual or in supplements published by Sony. Circuit adjustments that are critical for safe operations are identified in this manual. Follow these procedures whenever critical components are replaced or improper operation is suspected.

- 6) IMPORTANT REMINDER FOR TV MAIN BOARD REPLACEMENT:

It is mandatory for service centers to confirm the TV's system information after each repair is carried out with Main board replacement.

Whenever a TV Main board is replaced, the correct TV Model and Serial number must be reinserted into memory.

This is a MANDATORY procedure that each service center must apply.

Please refer to the chapter of ADJUSTMENT in this service manual to find out how to set the model number and serial number

1-2. Caution Handling of LCD Panel.

When repairing the LCD Panel, make sure you are grounded with a wrist band.

When repairing the LCD Panel on the wall, the panel must be secured using the 4 mounting holes on the rear cover.

- 1) Do not press the panel or frame edge to avoid the risk of electric shock.
- 2) Do not scratch or press on the panel with any sharp objects.
- 3) Do not leave the module in high temperature or in areas of high humidity for an extended period of time.
- 4) Do not expose the LCD panel to direct sunlight.
- 5) Avoid contact with water. It may cause short circuit within the module.
- 6) Disconnect the AC power when replacing the backlight.
- 7) Always clean the LCD panel with a soft cloth material.
- 8) Handle the wires or connectors of the backlight circuit with care. Damaging the wires may cause a short circuit.
- 9) Protect the panel from ESD to avoid damaging the electronic circuit (C-MOS).

SAFETY NOTES

10) During the repair, DO NOT leave the POWER ON or Burn-in period for more than 1 hour while the TV is facing down on a cloth. Refer Figure 1.

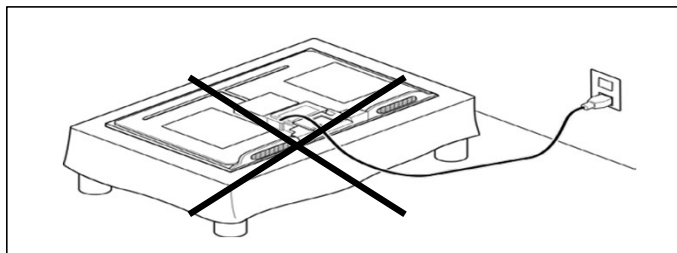


Figure 1.

To reduce the risk of image retention:

- Fill the screen by changing [Wide mode] to eliminate the black bars. Select [Wide mode] other than [Normal].
- Turn off the OSD (On Screen Display) by pressing the DISPLAY button and turn off the menus from connected equipment. For details, refer to the instruction manuals for the connected equipment.
- Avoid displaying static images with bright colours (including white), clocks or logos on any portion of the screen.
- Set the picture settings based on the ambient conditions. The Standard Picture is recommended for home use and when viewing content that often displays the station logos, etc.

The TV has following features to help reduce/ prevent image retention. Press the HOME button, then select [Settings] – [Picture & Display] – [Expert panel settings] – the desired option.

Panel refresh.

Panel refresh will automatically run to adjust the uniformity of the TV screen after it has been in use for long periods of time.

Panel refresh can also be performed manually and should only be used if image retention is very noticeable, or you see the following message: [Panel refresh did not finish...]

Caution:

- The Panel refresh function may affect the panel. As a reference, perform the Panel refresh only once a year, do not perform it more than once a year as it may affect the usable life of the panel.
- Panel refresh takes about one hour to complete.
- A white line may be displayed on the screen during the Panel refresh, this is not a malfunction of the TV.
- Panel refresh will only work when the room temperature is between 10°C and 40 °C.

Pixel shift.

Automatically moves the image on the screen to prevent image retention.

Other feature.

The screen brightness is automatically reduced when displaying still images, clocks, bright colours or logos etc.

1-3. Caution_for_Board_handling.

Symptom : The following problems will occur due to handling of the IC mounted on the board.

- Solder crack due to substrate handling (stress).
- IC breakdown due to static electricity (ESD).

When repairing the TV at the customer's home or service station or Repair of defect board, please pay attention to the handling of the board.

※Substrate that needs attention for handling

- Main Board (B** - Board)
- Backend Board (D** - Board)

SAFETY NOTES

※ Things to prepare in advance.

ESD wrist-strap.



ESD cushion/sheet.

Please use a bag containing the board or a special seat.



ESD wrist-strap to be checked daily.
Use Multi-meter to make sure resistance of ESD wrist-strap is OK.
(R=750K Ohms to 35Mega Ohms)

1) Caution for Board handling(Stress)

Be sure to observe the following contents.

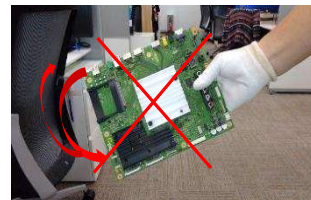
① Hold the board with both hands.



② Do not hold/push Heat-Sink.



③ Handle with care. Do not swing.



SAFETY NOTES

- ④ Regardless of Good board or Defective board, always put it on ESD cushion/sheet slowly.



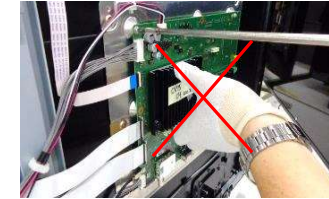
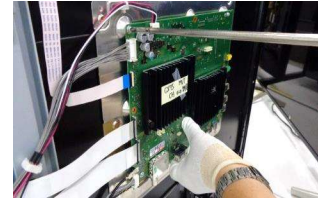
- ⑤ Do not stack up.



- ⑥ Keep vertical position and put in/take out from Box.
Always put into ESD bag then place into Box/Container Box.



- ⑦ Do not hold Heat-Sink when dis-assembly or assembly it.



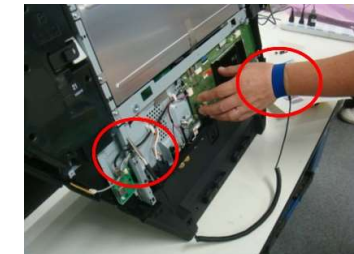
- 2) Caution for Board handling(ESD).

Be sure to observe the following contents.

- ① When take off Rear-Cover, do not touch to board.



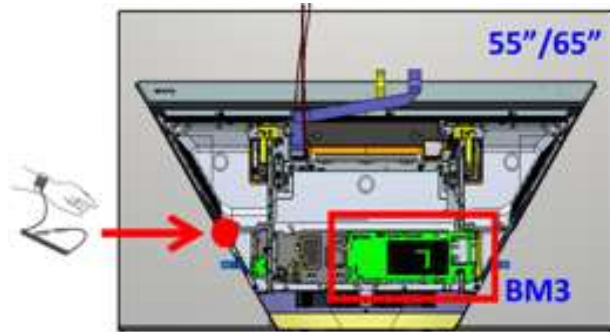
- ② Use ESD wrist-strap.



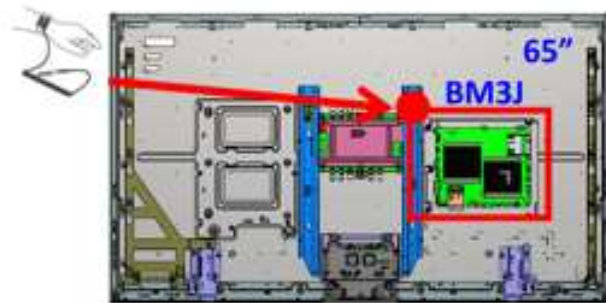
SAFETY NOTES

※Installation example of wrist-strap.

Please connect the clip to the metal part of the chassis of the TV with the wristband grounded. Below is a grounding example of each model.



<K*-65Z9F>



※Caution

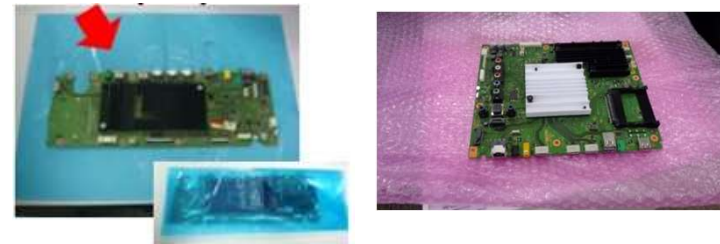
ESD wrist-strap to be checked daily.

Use Multi-meter to make sure resistance of ESD wrist-strap is OK.(R=750K Ohms to 35Mega Ohms).

③ When holding board, do not hit/touch to Plastic part(s).



④ After take defective board out from TV, put it into ESD bag. Do not place on floor mat/carpet direct. And, always put it on ESD cushion.



1-4. Caution About the Lithium Battery.

- 1) Danger of explosion if battery is incorrectly replaced. Replace only with the same or equivalent type.
- 2) Outer case broken battery should not contact to water.

SAFETY NOTES

1-5. Safety Check-Out

After correcting the original service problem, perform the following safety checks before releasing the set to the customer:-

- 1) Check the area of your repair for unsoldered or poorly soldered connections. Check the entire board surface for solder splashes and bridges.
- 2) Check the inter board wiring to ensure that no wires are pinched or contact high-wattage resistors.
- 3) Check all control knobs, shields, covers, ground straps and mounting hardware have been replaced. Be absolutely certain you have replaced all the insulators.
- 4) Look for unauthorized replacement parts, particularly transistors that were installed during a previous repair. Point them out to the customer and recommend their replacement.
- 5) Look for parts which show obvious signs of deterioration even though functioning. Point them to the customer and recommend for replacement.
- 6) Check the line cords for cracks and abrasion. Recommend the replacement of any such line cord to the customer.
- 7) Check the antenna terminals, metal trim, metalized knobs, screws and all other exposed metal parts for AC leakage. Check leakage test as described next.
8. For safety reasons, repairing the Power board and/or Inverter board is prohibited.

1-6. Leakage Test.

(To protect electric shock when customer touch the terminal.)

Leakage current can be measured by V: Voltmeter or oscilloscope (r.m.s. or peak reading).

Stabilized power supply instrument and isolated voltage transformer:

Use too much current capacity and isolated voltage transformer does not need to use stabilized power supply equipment.

Specification of RMS volt meter: Input resistance > 1 Mohm, Input capacitance < 200 pF, Frequency range: 15 Hz – 1MHz . Refer Figure 2. Isolated type volt -meter (FLUKE 8921A etc *1).

*1 Not use FLUKE 8920A that connected to protective earth by diode.

Leakage current of measurement instrument is less than 10µArms when under test equipment AC plug is opened.

Set up the following condition and turn on the set. Applied voltage: Nominal input voltage (Description on Nameplate).

Measure the leakage current between one phase conductor and neutral for terminal A and terminal B.

Read rms value, and then calculate to peak value PEAK VALUE = $\sqrt{2}$ RMS VALUE.

Comply with the following requirement.

Class II equipment (2-pin plug): for each terminal, the worst value of measurement must not exceed AC 350uA peak).

Note: including AC adaptor, AC adaptor/DC operated unit combination.

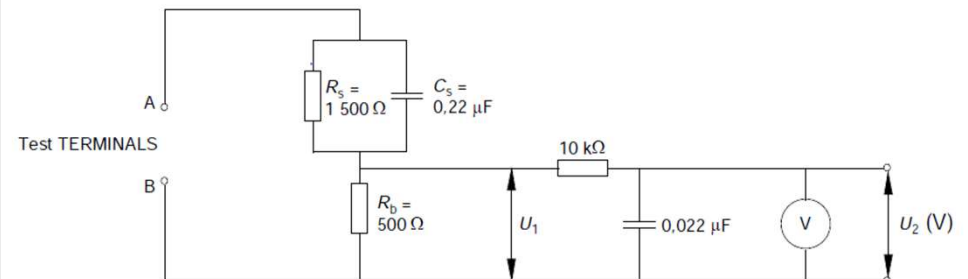


Figure 2 – Measuring network for Leakage Current

IEC 802/98

SAFETY NOTES

1-7. How to Find a Good Earth Ground.

- 1) A cold-water pipe is a guaranteed earth ground; the cover-plate retaining screw on most AC outlet boxes is also at earth ground.
- 2) If the retaining screw is to be used as your earth ground, verify that it is at ground by measuring the resistance between it and a cold-water pipe with an ohmmeter. The reading should be zero ohms.
- 3) If a cold-water pipe is not accessible, connect a 60- to 100-watt trouble- light (not a neon lamp) between the hot side of the receptacle and the retaining screw. Try both slots, if necessary, to locate the hot side on the line; the lamp should light at normal brilliance if the screw is at ground potential (see Figure 3).

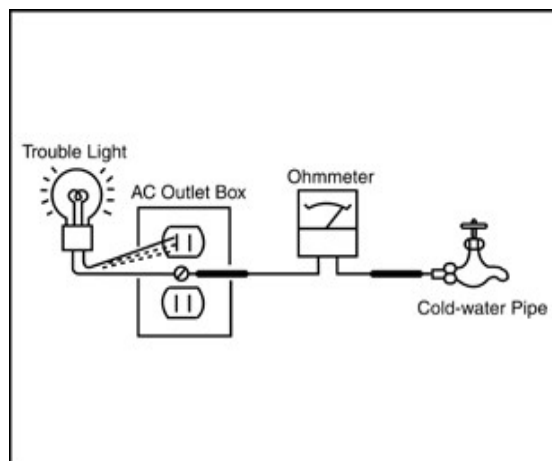


Figure 3. Checking for earth ground.

1-8. Lead Free Information

The circuit boards used in these models have been processed using Lead Free Solder. The boards are identified by the LF logo located close to the board designation.



Figure 4: LF Logo

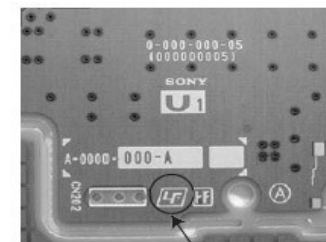


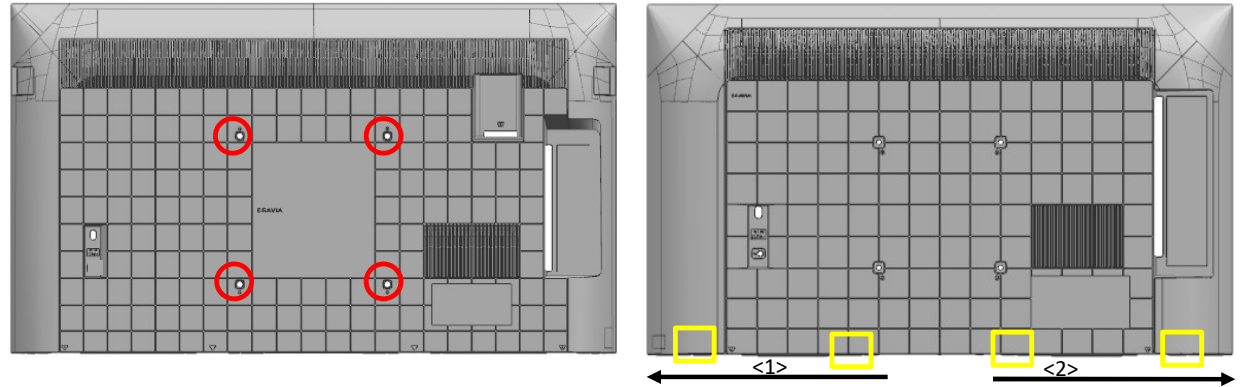
Figure 5: LF logo on circuit board

The servicing of these boards requires special precautions. It is strongly recommended to use Lead Free Solder material in order to guarantee optimal quality of new solder joints.

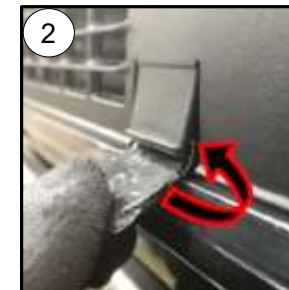
DISASSEMBLY AND REMOVAL CAUTION 43''

REAR COVER

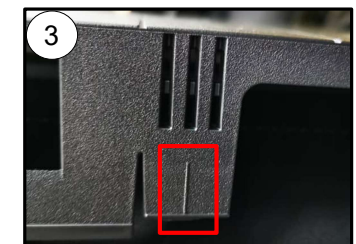
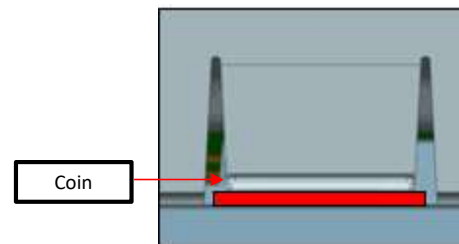
1. Remove the screws from the rear cover (4 pcs)
2. Unhook the bottom hook, starting from center.



- ① Unhook two hooks closest to center simultaneously to prevent lock back. (Refer to the next page for the location of hooks)
- ② Unhook both hooks using coin or jig.
- ③ Use mirror or touch the line to assist locating the hook position.



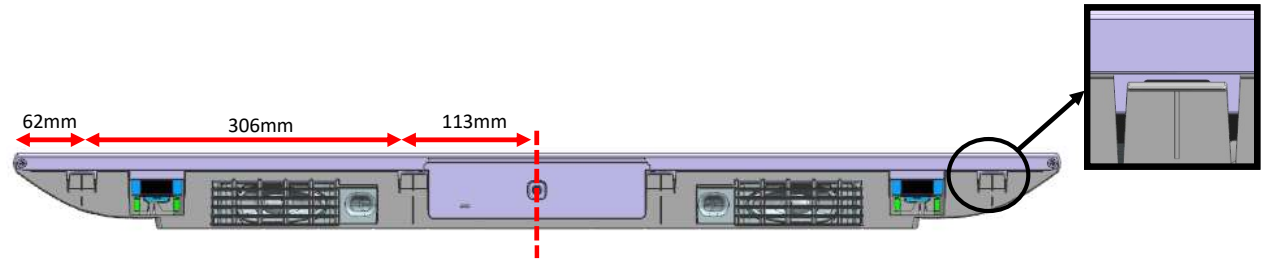
Coin or jig to unhook bottom Rear Cover - Bezel hook
*Wrap coin in tape (55mmX25mm)
*Thickness of coin approximately 2mm



DISASSEMBLY AND REMOVAL CAUTION 43''

REAR COVER

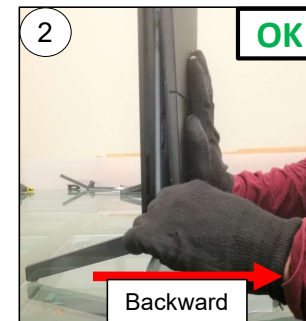
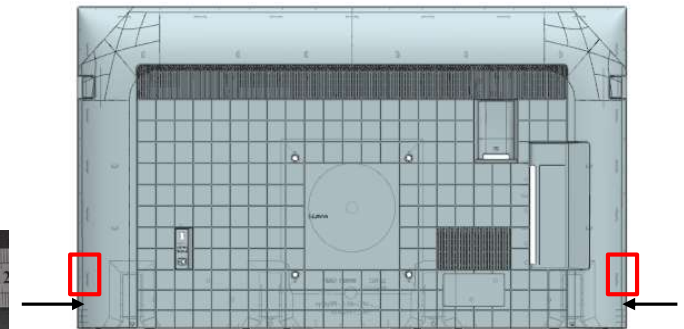
Bottom Hook Position



3. Unhook corner hook.

Ruler or jig to release corner hook
*Wrap ruler with tape to prevent scratch

- ① Releasing the corner hook by pulling the Rear Cover corner and insert a jig or ruler.
- ② Ensure the jig or ruler is pulled backward.
- ③ DO NOT pivot on bezel when inserting the jig or ruler.

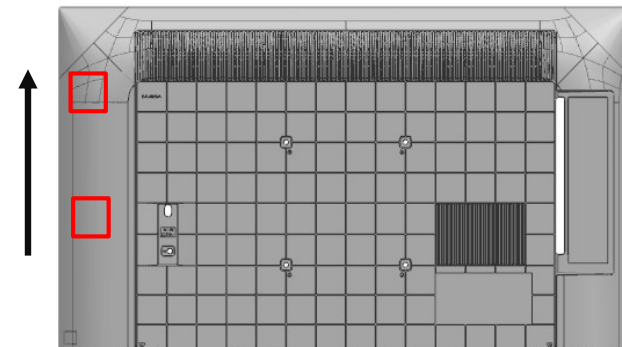


DISASSEMBLY AND REMOVAL CAUTION 43"

REAR COVER

4. Unhook left side hooks.

Total rear cover back chassis : 2 hooks



- ① Grip the rear cover by hand and use a ruler or jig to remove the hook of the rear cover back chassis.
- ② Flex the rear cover outward to remove the hook. Support set with arm.



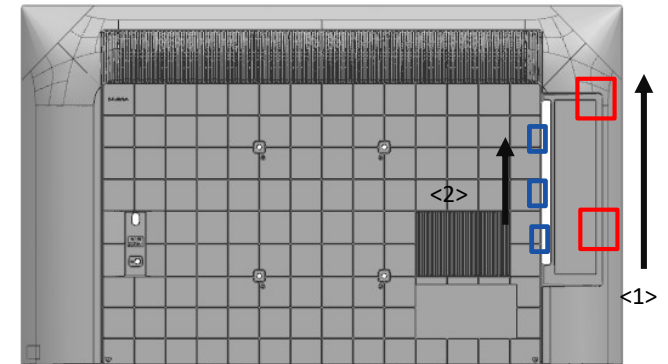
DISASSEMBLY AND REMOVAL CAUTION 43"

REAR COVER

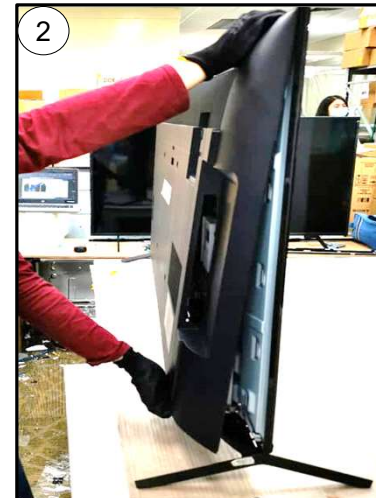
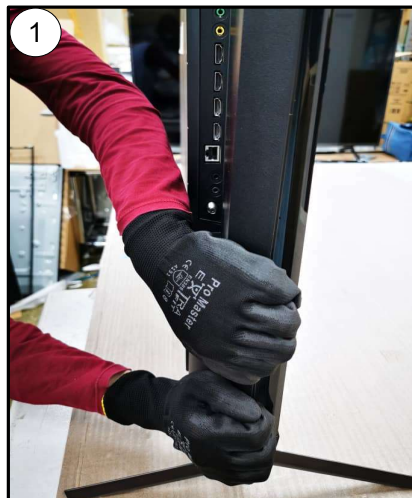
5. Unhook right side hooks.

Total side bracket hooks : 3 hooks.

Total rear cover back chassis hooks : 2 hooks



- ① Remove the side hooks.
- ② Pull the rear cover below the side jack to remove the hook.
- ③ Remove the remaining side hooks.



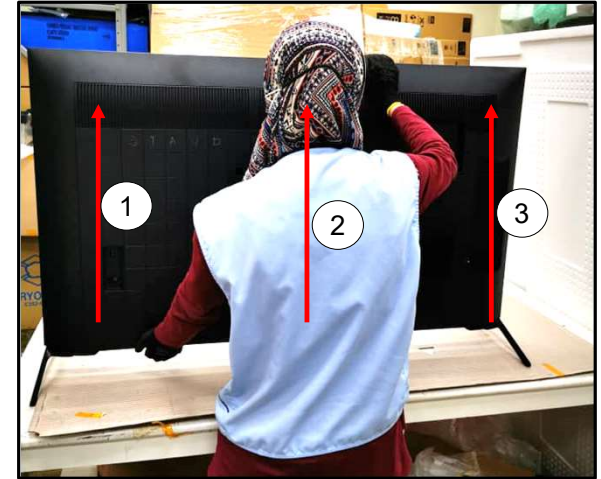
DISASSEMBLY AND REMOVAL CAUTION 43"

REAR COVER

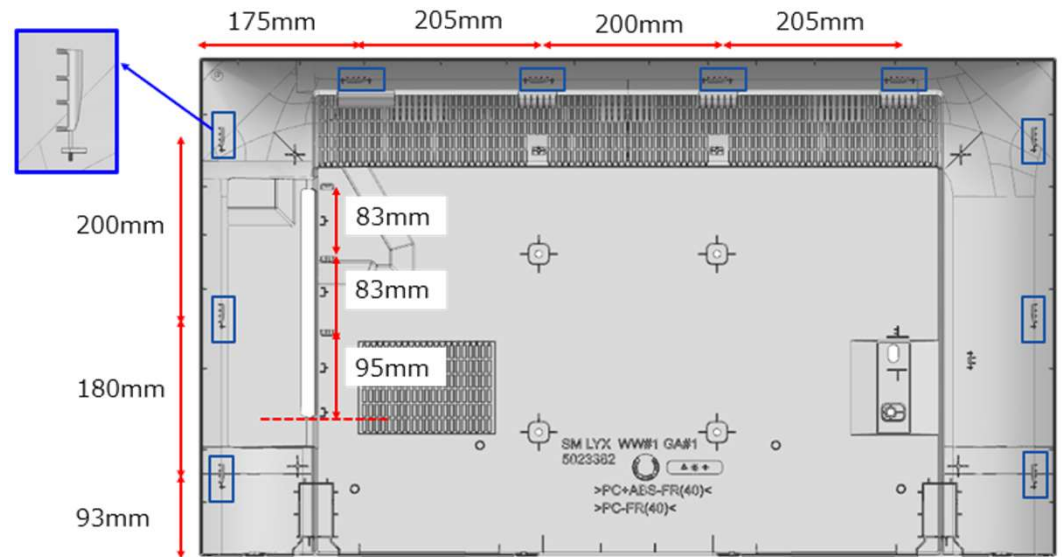
6. Unhook top row.

Total hooks (top row): 4 hooks



- ① Tilt the rear cover and push upwards on the left and right side.
- ② Pull the rear cover below the side jack to remove the upper hook.



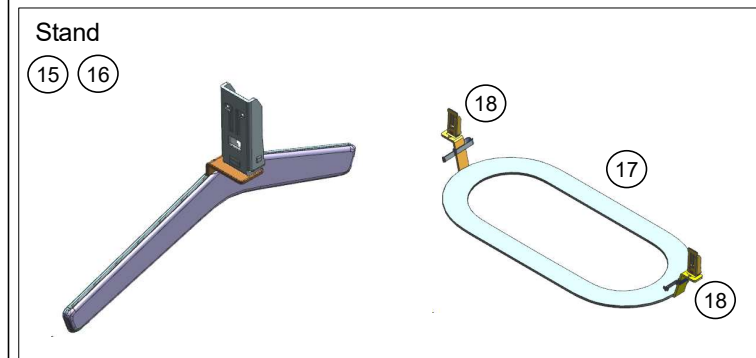
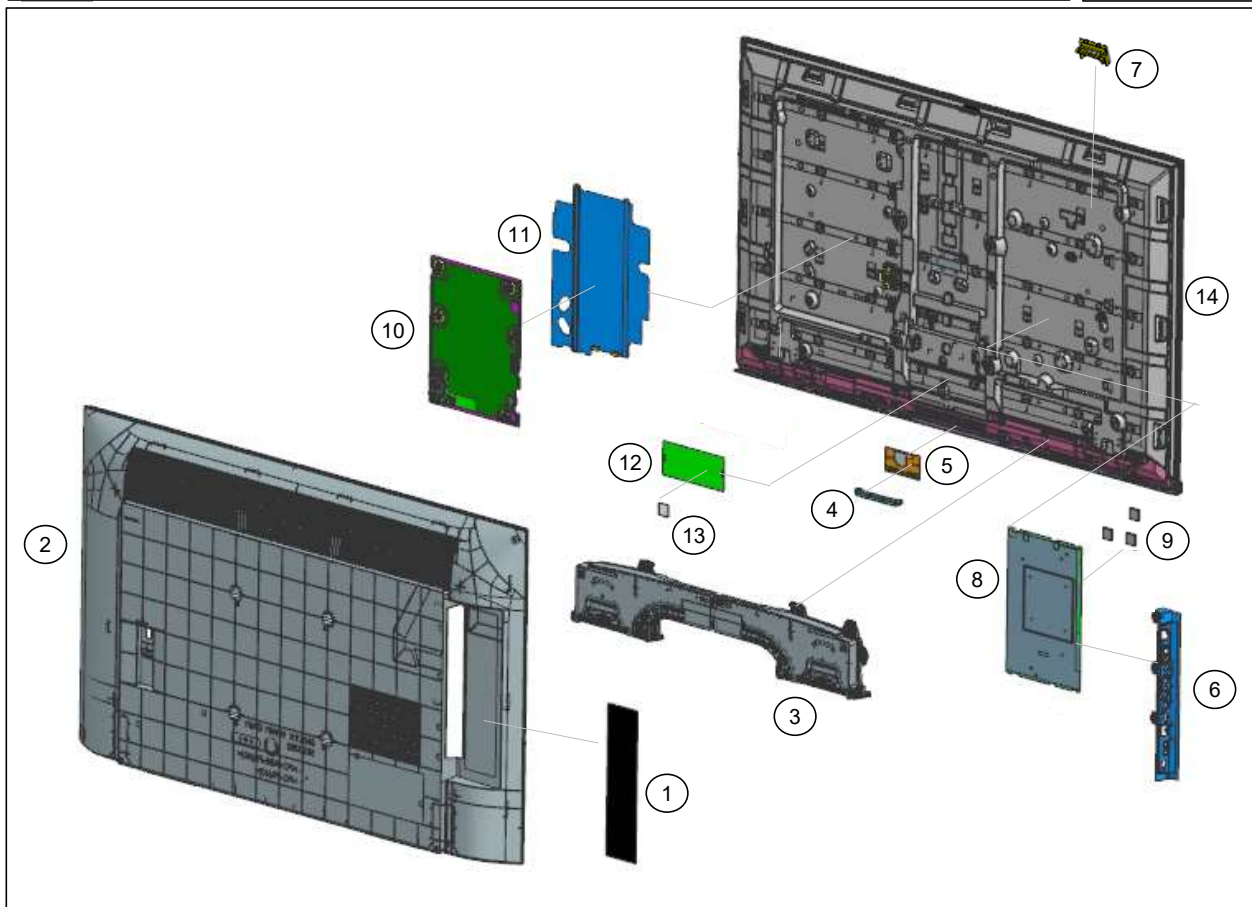
Hook positioning.



EXPLODED VIEW & PART LIST 43"






- Place the TV set facing downwards on a stable, level surface before disassembly and assembly of parts.
-  and shaded parts are critical for safety. Replace only with part number specified.
-  Parts contain confidential information. Strictly follow the instruction whenever the components are repaired and/or replaced

- \ (*) Parts are not stocked since they are seldom required for routine service. Some delays should be anticipated when ordering these components.
- \ Picture provided in this section might have slight difference from the actual sets.
- \ The reference number beside the part indicates the disassembly sequence.
- \ Remove screws before disassembly. Unplug connectors before disassembly






EXPLODED VIEW & PART LIST 43"

SET PART LIST

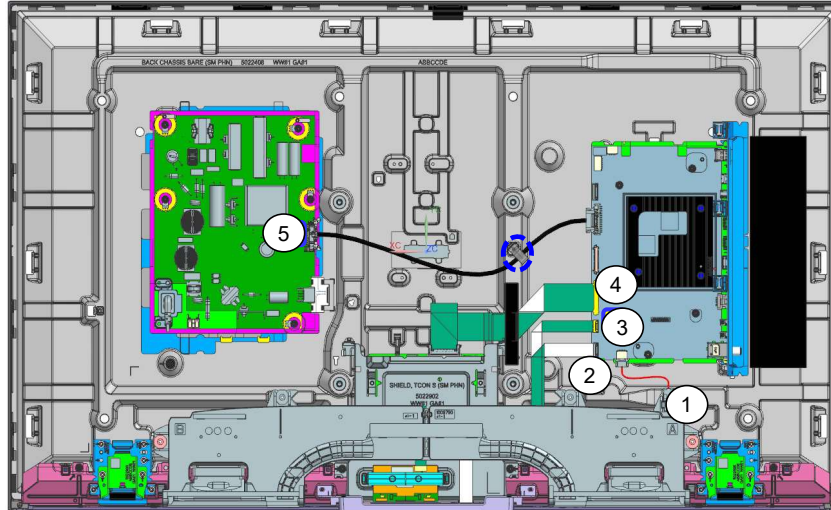
REF. NO	PART NO.	DESCRIPTION	REMARKS	
 8	A-5042-192-A	COMPL_SVC_BM5A_FE_EU	80K	Printed Circuit Board, incl. capacitors
 8	A-5042-194-A	COMP_SVC_BM5A_FE_EU_MIC	81K & 82K	
 10	1-009-799-31	GL11B-STATIC CONVERTER (TV)		Internal Power Supply
 10	1-010-537-31	GL17B-STATIC CONVERTER (TV)	81K RU3	
 14	A-5044-470-A	P-MOD (YSCM043CCO01)(SVC)		Liquid Crystal Display

OTHERS PART

 1-005-621-12	C7L AC POWER CORD SETS (EU)	CEI & RU3 - Compatible	
 1-005-634-11	C7L AC POWER CORD SETS (EU)	CEI & RU3 - Compatible	Cable
 1-005-628-13	C7L AC POWER CORD SETS (UK)	UKA	

EXPLODED VIEW & PART LIST 43"

CONNECTOR

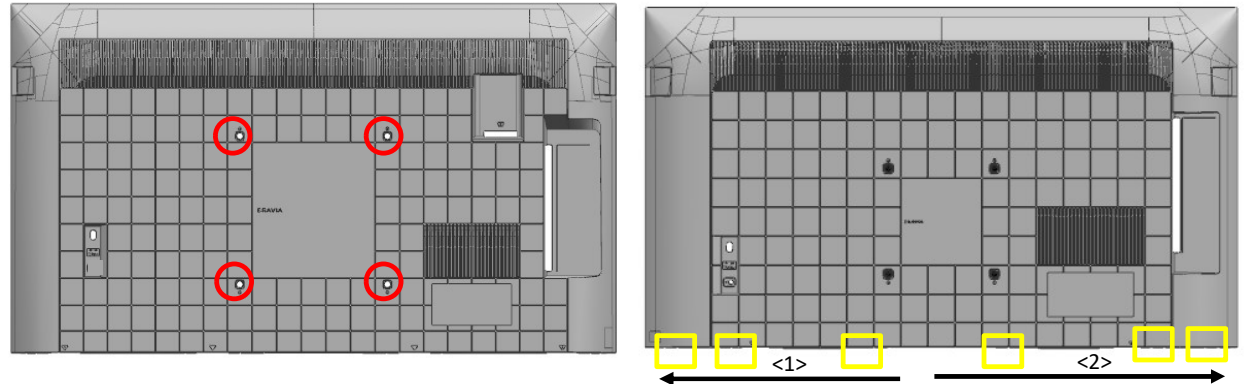


REF. NO	PART NO.	DESCRIPTION	REMARKS
1	1-010-989-22	CONNECTOR ASSY 4P (SP)	CN3550(BM5A)/CN6600(BM5STY)/CN6603 (BM5ST)-SP(1)
1	1-010-989-12	CONNECTOR ASSY 4P (SP)	Compatible
2	1-010-994-11	FLEXIBLE FLAT CABLE 25P	CN1200(BM5A)-CN102(HT2)(1)
2	1-010-993-11	FLEXIBLE FLAT CABLE 25P	Compatible
3	1-010-992-11	FLEXIBLE FLAT CABLE 20P	CN3801(BM5A)-J1(WIFI/BT)(1)
3	1-010-991-11	FLEXIBLE FLAT CABLE 20P	Compatible
4	1-010-996-11	FLEXIBLE FLAT CABLE 51P	CN4200(BM5A)-U1(TCON)(1)
5	1-010-990-22	CONNECTOR ASSY 30P	CN1701(BM5A)-CN6401(GL)(1)
5	1-010-990-11	CONNECTOR ASSY 30P	Compatible

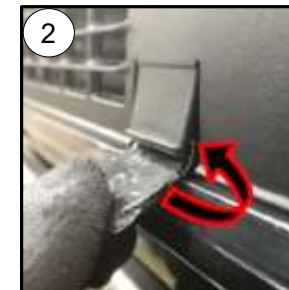
DISASSEMBLY AND REMOVAL CAUTION 50”

REAR COVER

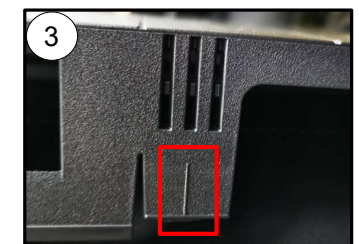
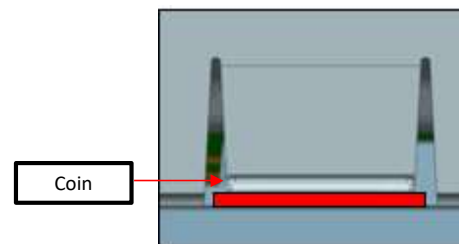
1. Remove the screws from the rear cover (4 pcs)
2. Unhook the bottom hook, starting from center.



- ① Unhook two hooks closest to center simultaneously to prevent lock back. (Refer to the next page for the location of hooks)
- ② Unhook both hooks using coin or jig.
- ③ Use mirror or touch the line to assist locating the hook position.



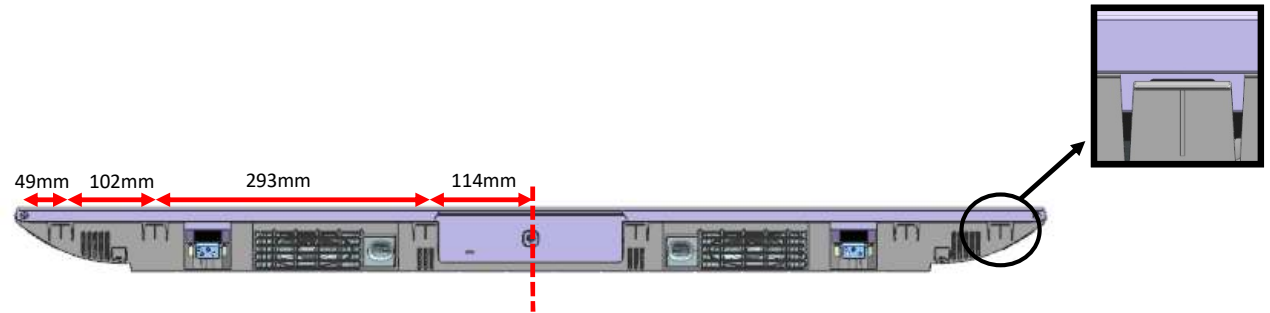
Coin or jig to unhook bottom Rear Cover - Bezel hook
*Wrap coin in tape (55mmX25mm)
*Thickness of coin approximately 2mm



DISASSEMBLY AND REMOVAL CAUTION 50''

REAR COVER

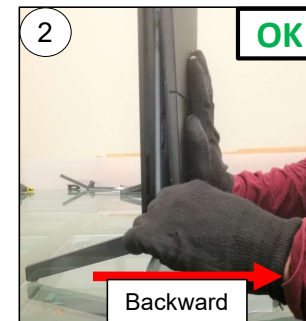
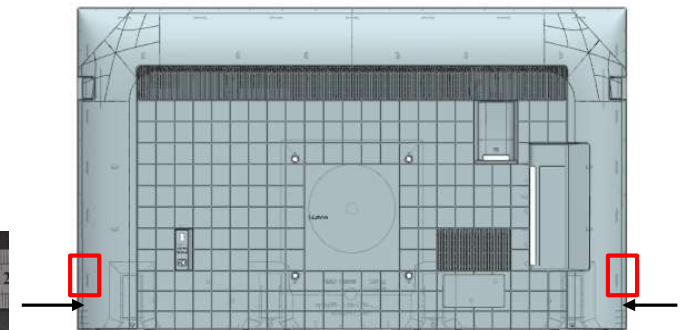
Bottom Hook Position



3. Unhook corner hook.

Ruler or jig to release corner hook
*Wrap ruler with tape to prevent scratch

- ① Releasing the corner hook by pulling the Rear Cover corner and insert a jig or ruler.
- ② Ensure the jig or ruler is pulled backward.
- ③ DO NOT pivot on bezel when inserting the jig or ruler.

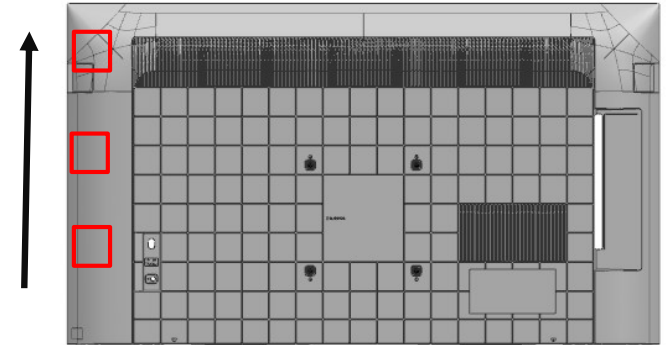


DISASSEMBLY AND REMOVAL CAUTION 50"

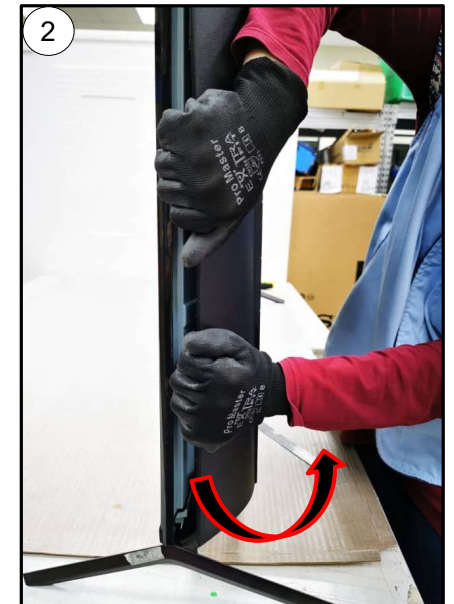
REAR COVER

4. Unhook left side hooks.

Total rear cover back chassis : 3 hooks



- ① Grip the rear cover by hand and use a ruler or jig to remove the hook of the rear cover back chassis.
- ② Flex the rear cover outward to remove the hook. Support set with arm.



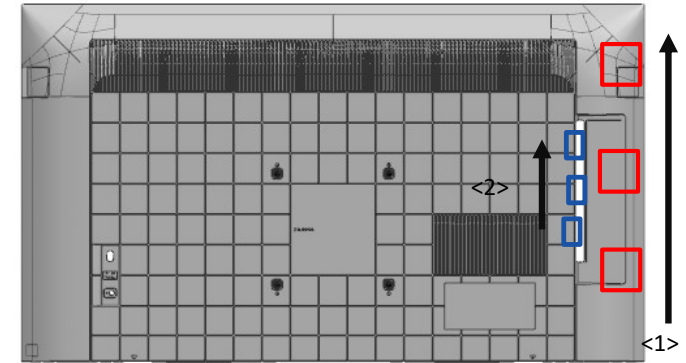
DISASSEMBLY AND REMOVAL CAUTION 50"

REAR COVER

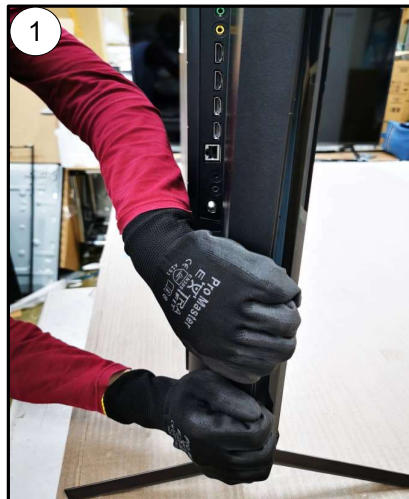
5. Unhook right side hooks.

Total side bracket hooks : 3 hooks.

Total rear cover back chassis hooks : 3 hooks



- ① Remove the side hooks.
- ② Pull the rear cover below the side jack to remove the hook.
- ③ Remove the remaining side hooks.



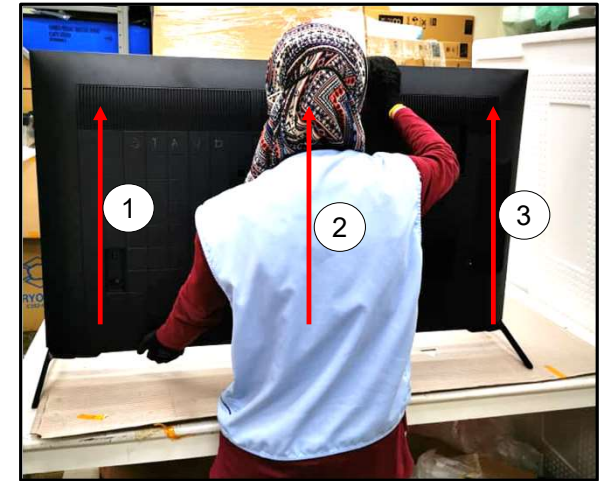
DISASSEMBLY AND REMOVAL CAUTION 50"

REAR COVER

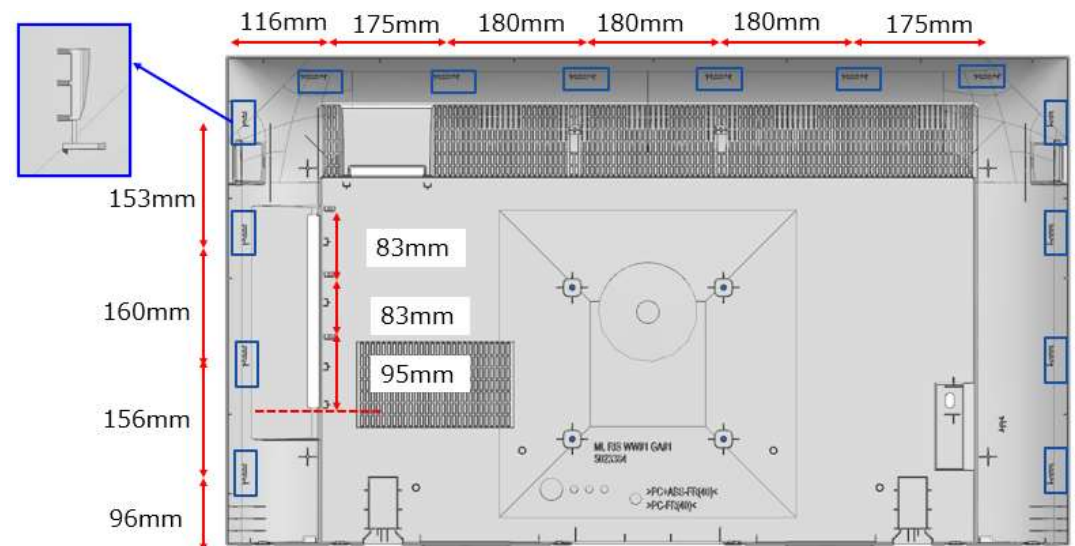
6. Unhook top row.

Total hooks (top row): 6 hooks



- ① Tilt the rear cover and push upwards on the left and right side.
- ② Pull the rear cover below the side jack to remove the upper hook.



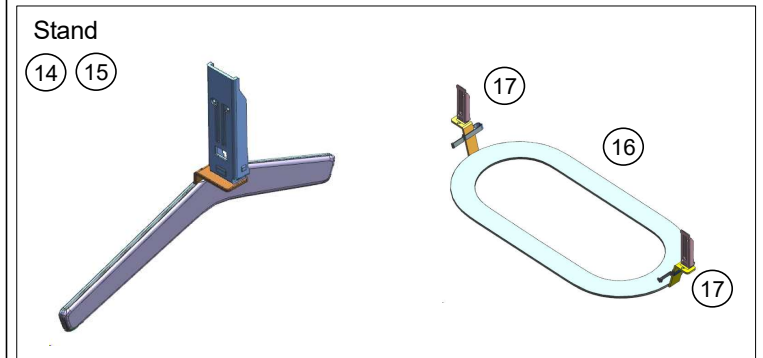
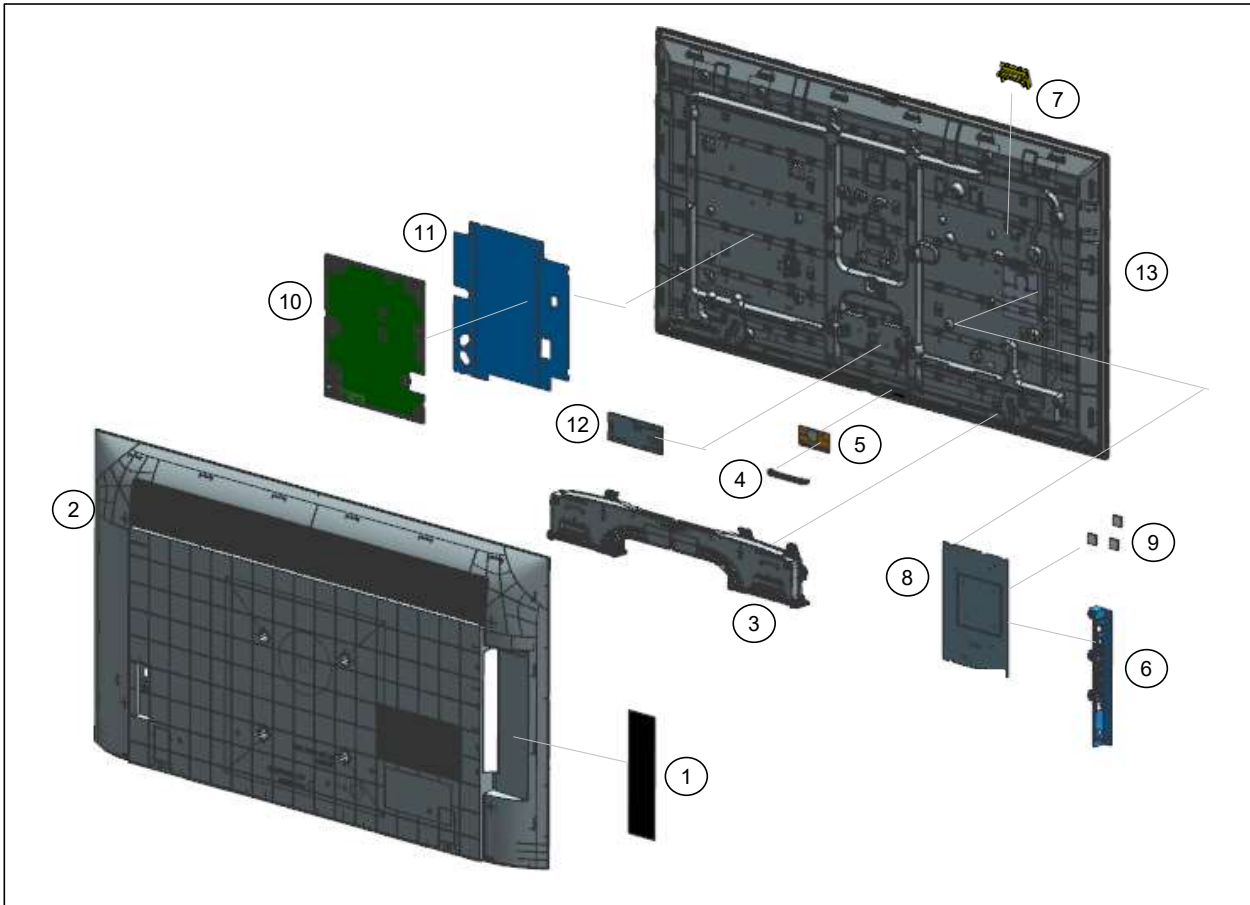
Hook positioning.



EXPLODED VIEW & PART LIST 50"






- Place the TV set facing downwards on a stable, level surface before disassembly and assembly of parts.
-  and shaded parts are critical for safety. Replace only with part number specified.
-  Parts contain confidential information. Strictly follow the instruction whenever the components are repaired and/or replaced

- \ (*) Parts are not stocked since they are seldom required for routine service. Some delays should be anticipated when ordering these components.
- \ Picture provided in this section might have slight difference from the actual sets.
- \ The reference number beside the part indicates the disassembly sequence.
- \ Remove screws before disassembly. Unplug connectors before disassembly



EXPLODED VIEW & PART LIST 50"

SET PART LIST

REF. NO	PART NO.	DESCRIPTION	REMARKS
 8	A-5042-192-A	COMPL_SVC_BM5A_FE_EU	80K
 8	A-5042-194-A	COMP_SVC_BM5A_FE_EU_MIC	81K & 82K
 10	1-009-800-31	GL12B-STATIC CONVERTER (TV)	
 10	1-010-536-31	GL16B-STATIC CONVERTER (TV)	81K RU3
 13	A-5044-469-A	P-MOD (YSCM050CCN01)(SVC)	

Printed Circuit Board, incl. capacitors

Internal Power Supply

Liquid Crystal Display

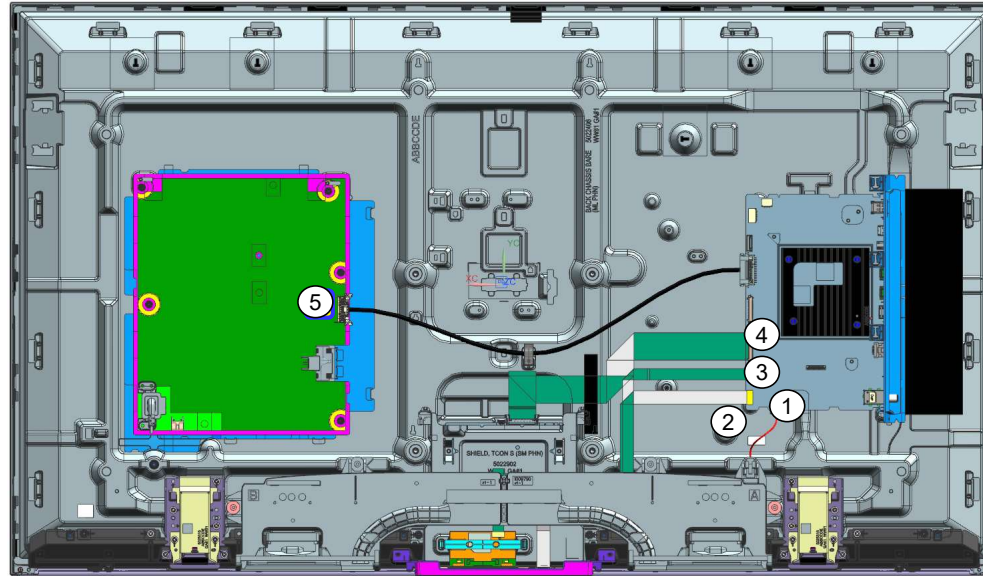
OTHERS PART

 1-005-621-12	C7L AC POWER CORD SETS (EU)	CEI & RU3 – Compatible	
 1-005-634-11	C7L AC POWER CORD SETS (EU)	CEI & RU3 – Compatible	
 1-005-628-13	C7L AC POWER CORD SETS (UK)	UKA	

Cable

EXPLODED VIEW & PART LIST 50"

CONNECTOR

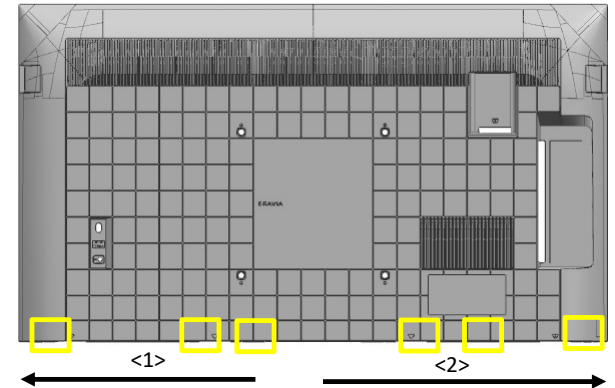
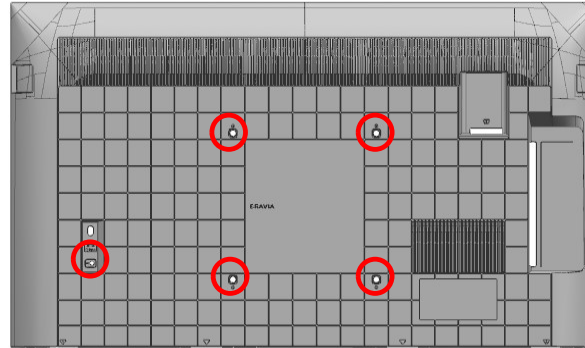


REF. NO	PART NO.	DESCRIPTION	REMARKS
1	1-010-989-22	CONNECTOR ASSY 4P (SP)	CN3550(BM5A)/CN6600(BM5STY)/CN6603 (BM5ST)-SP(1) Compatible
1	1-010-989-12	CONNECTOR ASSY 4P (SP)	
2	1-011-004-11	FLEXIBLE FLAT CABLE 25P	CN1200(BM5A)-CN102(HT2)(1) -
3	1-011-003-11	FLEXIBLE FLAT CABLE 20P	CN3801(BM5A)-J1(WIFI/BT)(1) Compatible
3	1-011-002-11	FLEXIBLE FLAT CABLE 20P	
4	1-011-006-11	FLEXIBLE FLAT CABLE 51P	CN4200(BM5A)-U1(TCON)(1) -
5	1-011-001-22	CONNECTOR ASSY 30P	CN1701(BM5A)-CN6401(GL)(1) Compatible
5	1-011-001-11	CONNECTOR ASSY 30P	

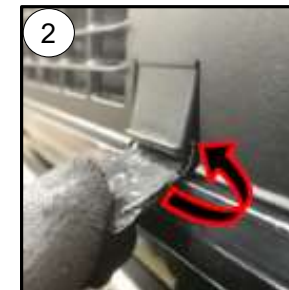
DISASSEMBLY AND REMOVAL CAUTION 55''

REAR COVER

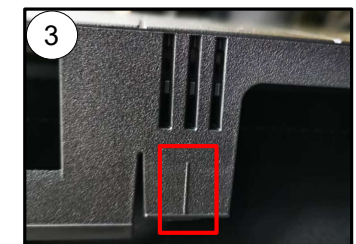
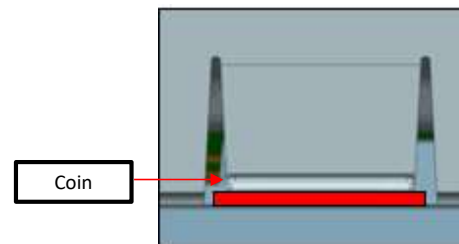
1. Remove the screws from the rear cover (5 pcs)
2. Unhook the bottom hook, starting from center.



- ① Unhook two hooks closest to center simultaneously to prevent lock back. (Refer to the next page for the location of hooks)
- ② Unhook both hooks using coin or jig.
- ③ Use mirror or touch the line to assist locating the hook position.



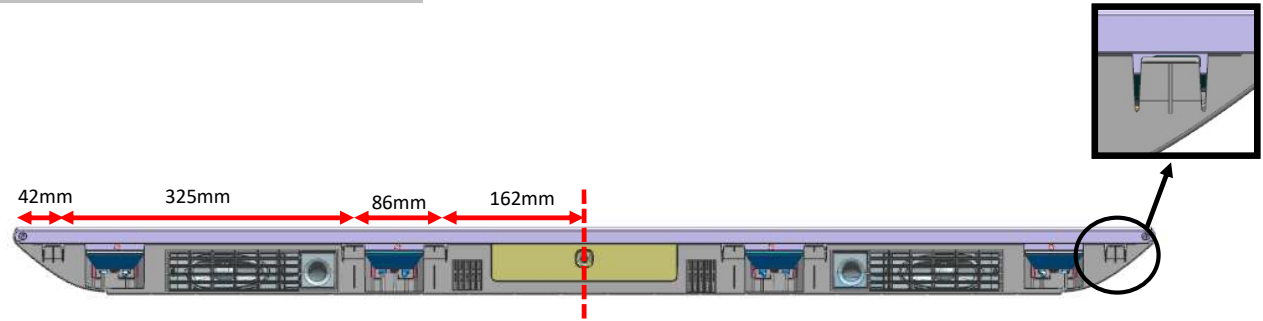
Coin or jig to unhook bottom Rear Cover - Bezel hook
*Wrap coin in tape (55mmX25mm)
*Thickness of coin approximately 2mm



DISASSEMBLY AND REMOVAL CAUTION 55”

REAR COVER

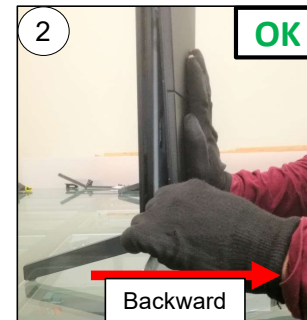
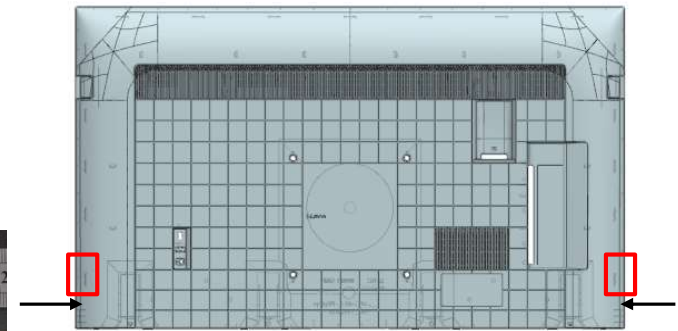
Bottom Hook Position



3. Unhook corner hook.

Ruler or jig to release corner hook
*Wrap ruler with tape to prevent scratch

- ① Releasing the corner hook by pulling the Rear Cover corner and insert a jig or ruler.
- ② Ensure the jig or ruler is pulled backward.
- ③ DO NOT pivot on bezel when inserting the jig or ruler.

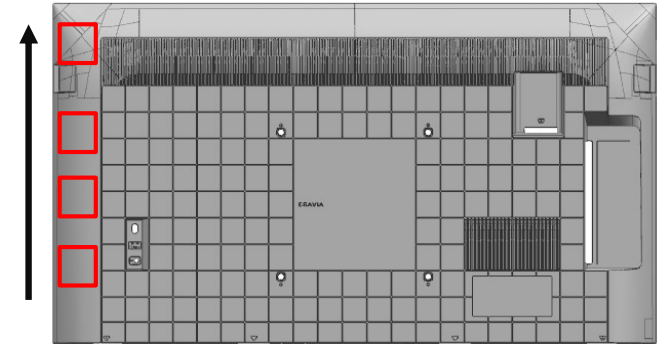


DISASSEMBLY AND REMOVAL CAUTION 55"

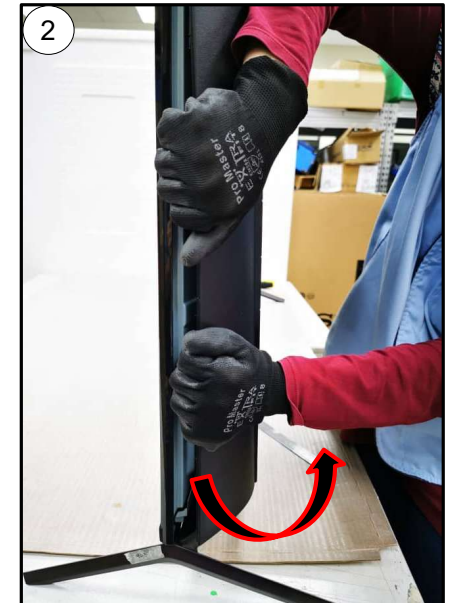
REAR COVER

4. Unhook left side hooks.

Total rear cover back chassis : 4 hooks



- ① Grip the rear cover by hand and use a ruler or jig to remove the hook of the rear cover back chassis.
- ② Flex the rear cover outward to remove the hook. Support set with arm.



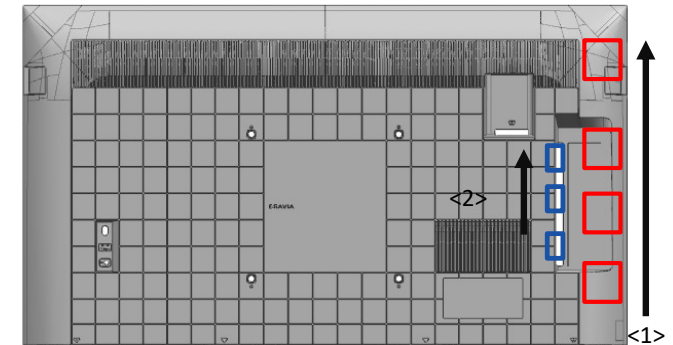
DISASSEMBLY AND REMOVAL CAUTION 55"

REAR COVER

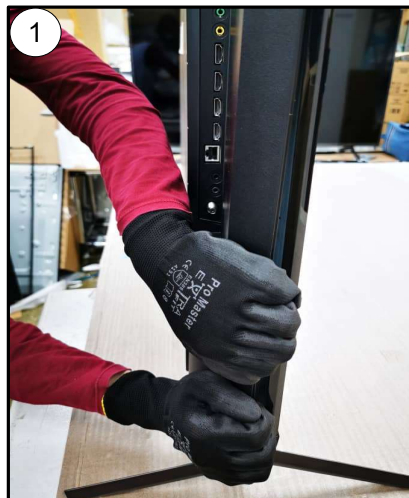
5. Unhook right side hooks.

Total side bracket hooks : 3 hooks.

Total rear cover back chassis hooks : 4 hooks



- ① Remove the side hooks.
- ② Pull the rear cover below the side jack to remove the hook.
- ③ Remove the remaining side hooks.



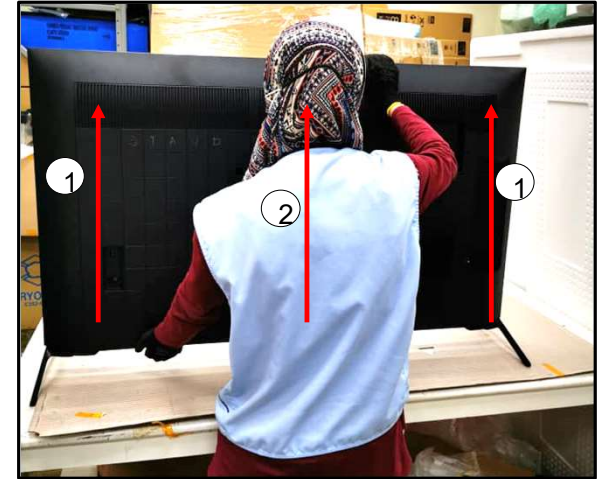
DISASSEMBLY AND REMOVAL CAUTION 55"

REAR COVER

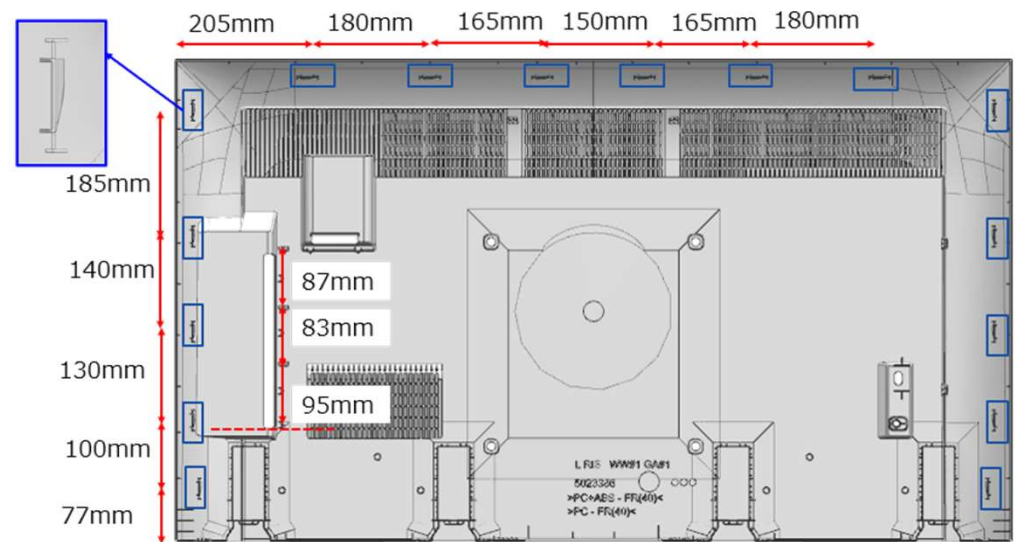
6. Unhook top row.

Total hooks (top row): 6 hooks



- ① Tilt the rear cover and push upwards on the left and right side.
- ② Pull the rear cover below the side jack to remove the upper hook.



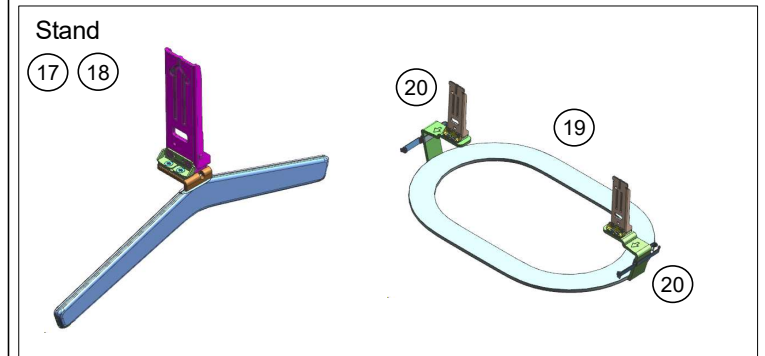
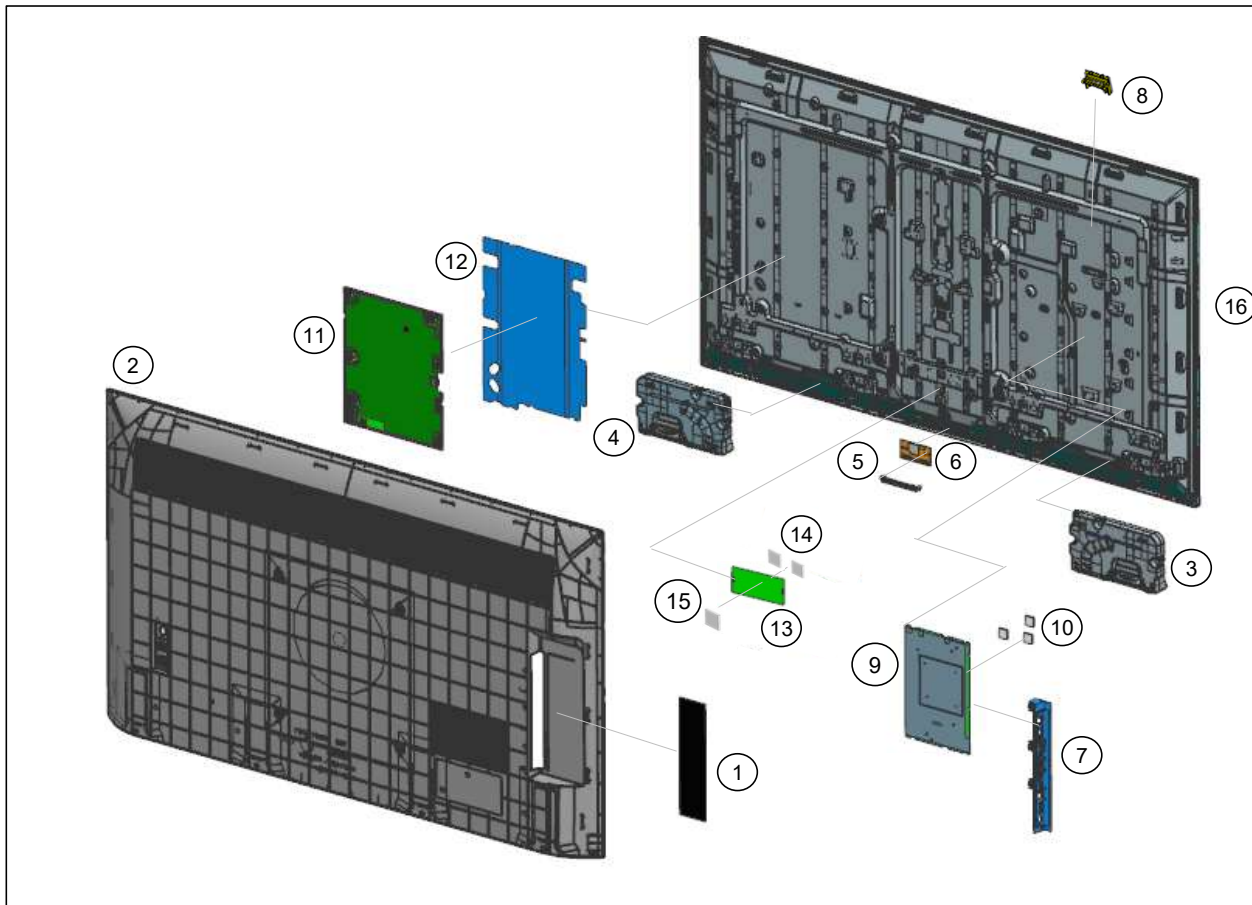
Hook positioning.



EXPLODED VIEW & PART LIST 55"









- Place the TV set facing downwards on a stable, level surface before disassembly and assembly of parts.
-  and shaded parts are critical for safety. Replace only with part number specified.
-  Parts contain confidential information. Strictly follow the instruction whenever the components are repaired and/or replaced

- \ (*) Parts are not stocked since they are seldom required for routine service. Some delays should be anticipated when ordering these components.
- \ Picture provided in this section might have slight difference from the actual sets.
- \ The reference number beside the part indicates the disassembly sequence.
- \ Remove screws before disassembly. Unplug connectors before disassembly



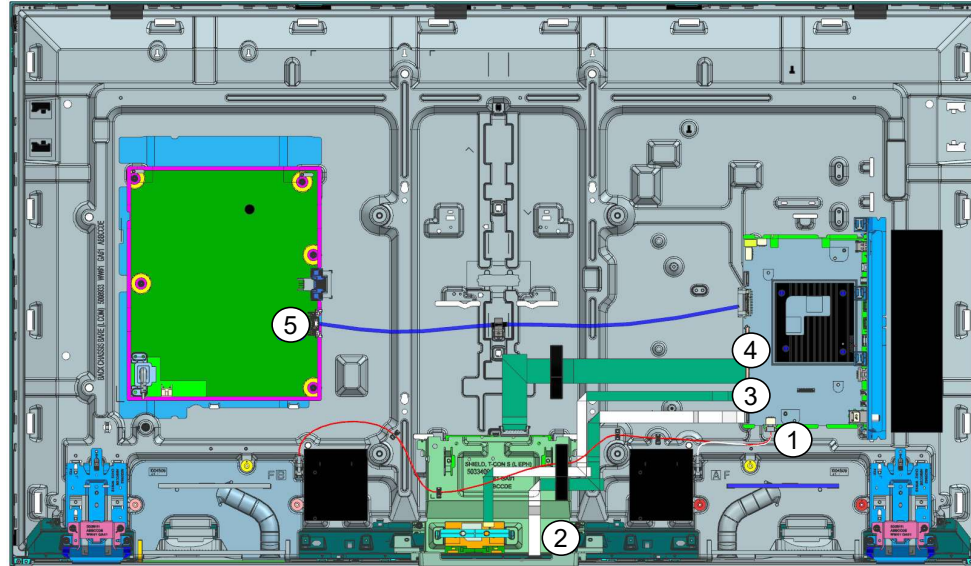
EXPLODED VIEW & PART LIST 55”

SET PART LIST

REF. NO	PART NO.	DESCRIPTION	REMARKS	
 9	A-5042-192-A	COMPL_SVC_BM5A_FE_EU	80K	Printed Circuit Board, incl. capacitors
 9	A-5042-194-A	COMP_SVC_BM5A_FE_EU_MIC	81K & 82K	
 11	1-004-422-22	GL01B-STATIC CONVERTER (TV)		Internal Power Supply
 16	A-5044-468-A	P-MOD (YSCM055CCO01)(SVC)		Liquid Crystal Display
 16	A-5044-467-A	P-MOD (YSCM055CCO01)(SVC)	81K RU3	
 1-005-621-12	1-005-621-12	C7L AC POWER CORD SETS (EU)	CEI & RU3 – Compatible	Cable
 1-005-634-11	1-005-634-11	C7L AC POWER CORD SETS (EU)	CEI & RU3 – Compatible	
 1-005-628-13	1-005-628-13	C7L AC POWER CORD SETS (UK)	UKA	

EXPLODED VIEW & PART LIST 55"

CONNECTOR

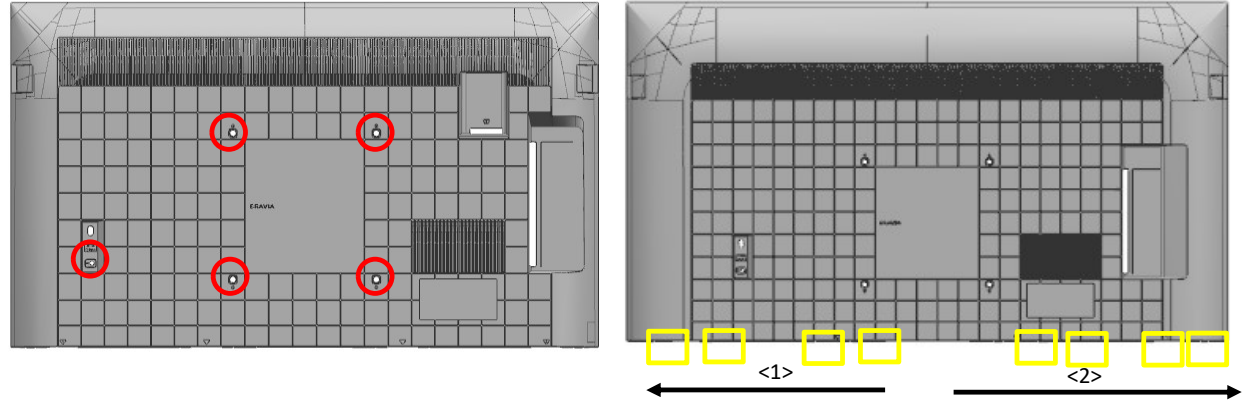


REF. NO	PART NO.	DESCRIPTION	REMARKS
1	1-006-501-43	CONNECTOR ASSY 4P (SP)	CN3550(BM5A)/CN6600(BM5STY)/CN6603 (BM5ST)-SP(1) Compatible
1	1-006-501-33	CONNECTOR ASSY 4P (SP)	
2	1-006-510-11	FLEXIBLE FLAT CABLE 25P	CN1200(BM5A)-CN102(HT2)(1) -
3	1-006-506-11	FLEXIBLE FLAT CABLE 20P	CN3801(BM5A)-J1(WIFI/BT)(1) Compatible
3	1-006-505-11	FLEXIBLE FLAT CABLE 20P	
4	1-010-543-21	FLEXIBLE FLAT CABLE 51P	CN4200(BM5A)-U1(TCON)(1) Compatible
4	1-010-542-12	FLEXIBLE FLAT CABLE 51P	
5	1-006-502-23	CONNECTOR ASSY 30P	CN1701(BM5A)-CN6401(GL)(1) Compatible
5	1-006-502-11	CONNECTOR ASSY 30P	

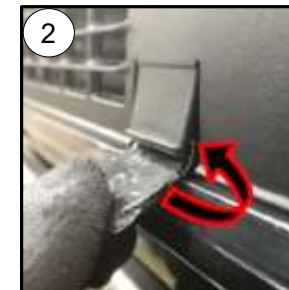
DISASSEMBLY AND REMOVAL CAUTION 65"

REAR COVER

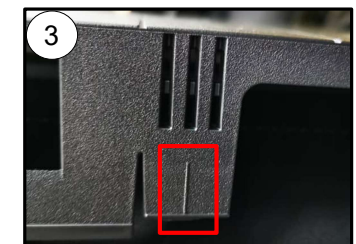
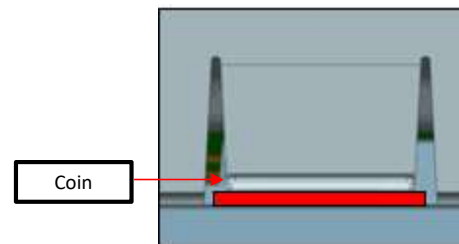
1. Remove the screws from the rear cover (5 pcs)
2. Unhook the bottom hook, starting from center.



- ① Unhook two hooks closest to center simultaneously to prevent lock back. (Refer to the next page for the location of hooks)
- ② Unhook both hooks using coin or jig.
- ③ Use mirror or touch the line to assist locating the hook position.



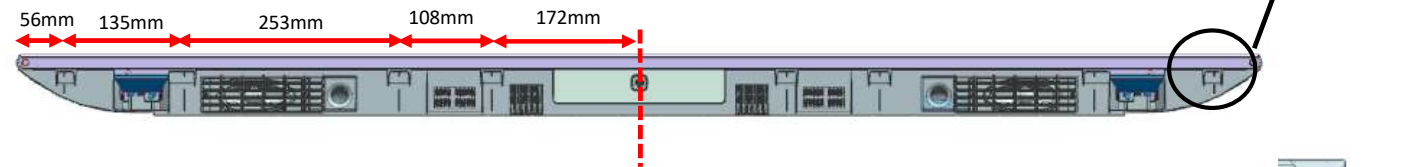
Coin or jig to unhook bottom Rear Cover - Bezel hook
 *Wrap coin in tape (55mmX25mm)
 *Thickness of coin approximately 2mm



DISASSEMBLY AND REMOVAL CAUTION 65''

REAR COVER

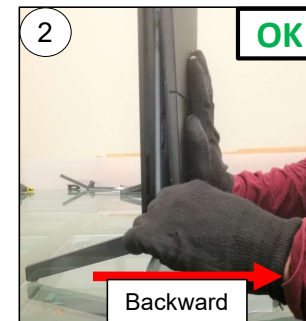
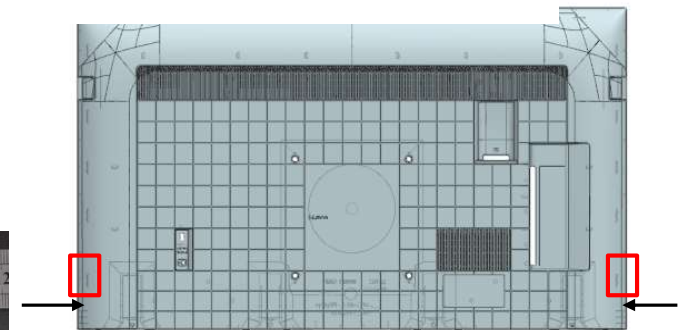
Bottom Hook Position



3. Unhook corner hook.

Ruler or jig to release corner hook
*Wrap ruler with tape to prevent scratch

- ① Releasing the corner hook by pulling the Rear Cover corner and insert a jig or ruler.
- ② Ensure the jig or ruler is pulled backward.
- ③ DO NOT pivot on bezel when inserting the jig or ruler.

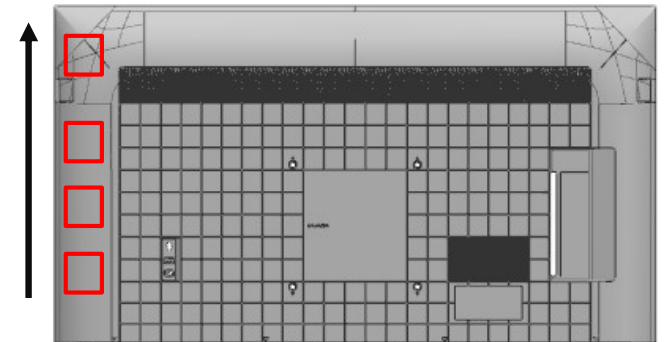


DISASSEMBLY AND REMOVAL CAUTION 65"

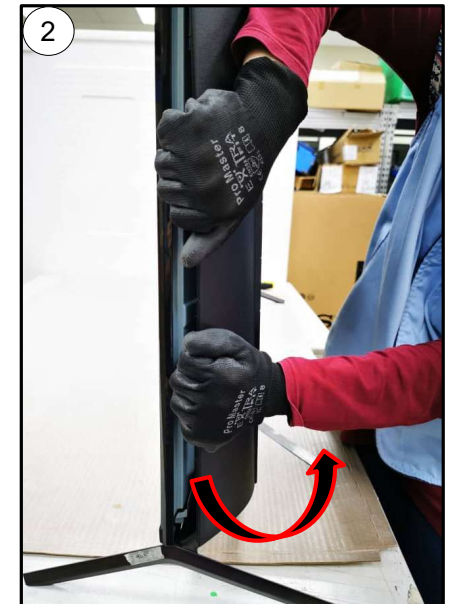
REAR COVER

4. Unhook left side hooks.

Total rear cover back chassis : 4 hooks



- ① Grip the rear cover by hand and use a ruler or jig to remove the hook of the rear cover back chassis.
- ② Flex the rear cover outward to remove the hook. Support set with arm.



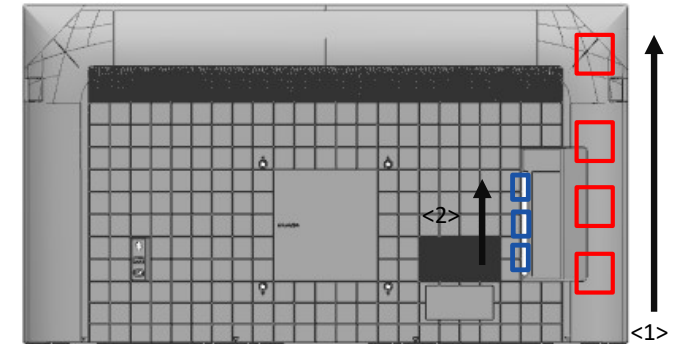
DISASSEMBLY AND REMOVAL CAUTION 65"

REAR COVER

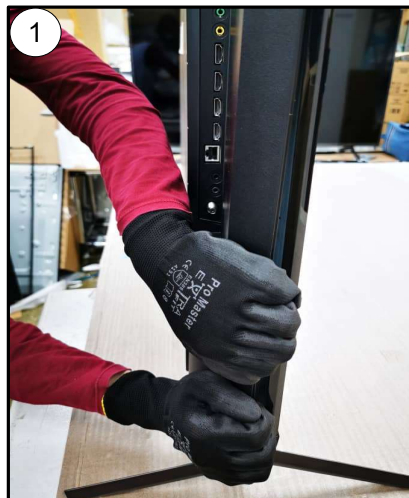
5. Unhook right side hooks.

Total side bracket hooks : 3 hooks.

Total rear cover back chassis hooks : 4 hooks



- ① Remove the side hooks.
- ② Pull the rear cover below the side jack to remove the hook.
- ③ Remove the remaining side hooks.



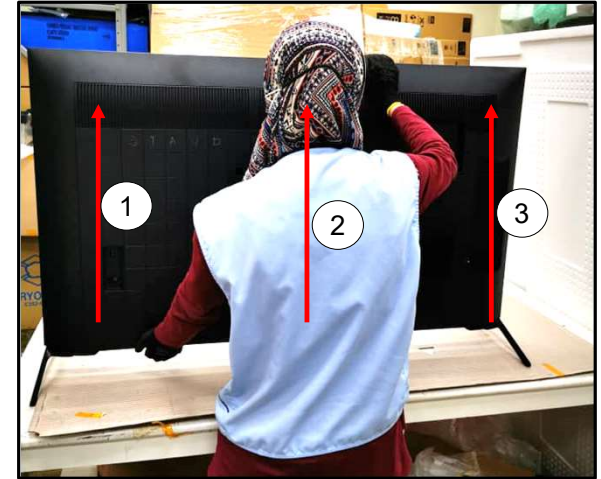
DISASSEMBLY AND REMOVAL CAUTION 65"

REAR COVER

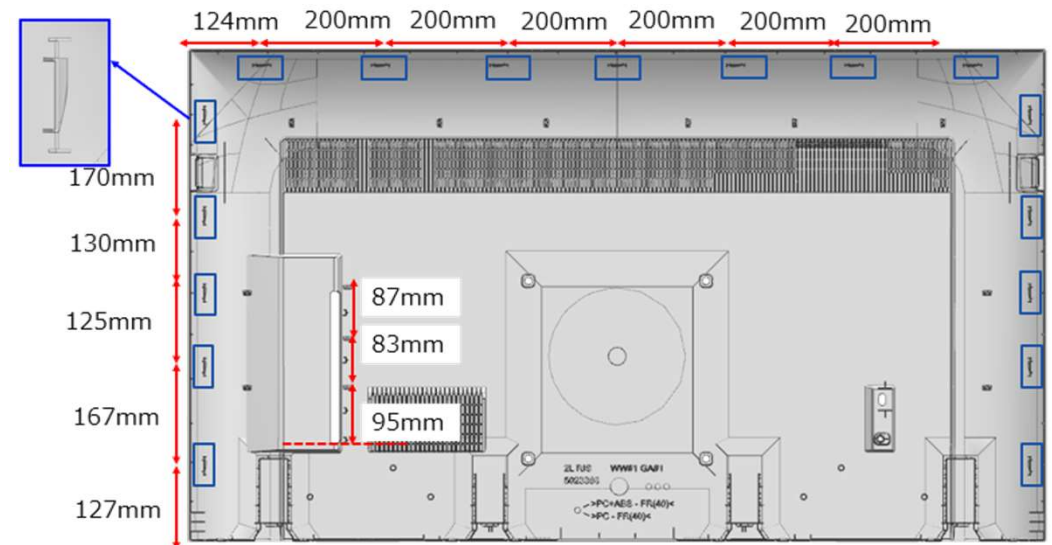
6. Unhook top row.

Total hooks (top row): 7 hooks



- ① Tilt the rear cover and push upwards on the left and right side.
- ② Pull the rear cover below the side jack to remove the upper hook.



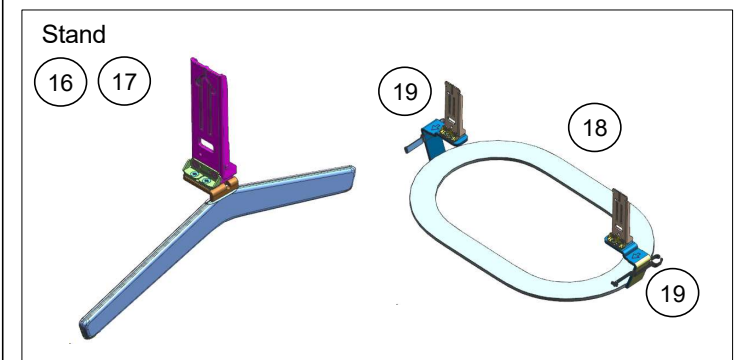
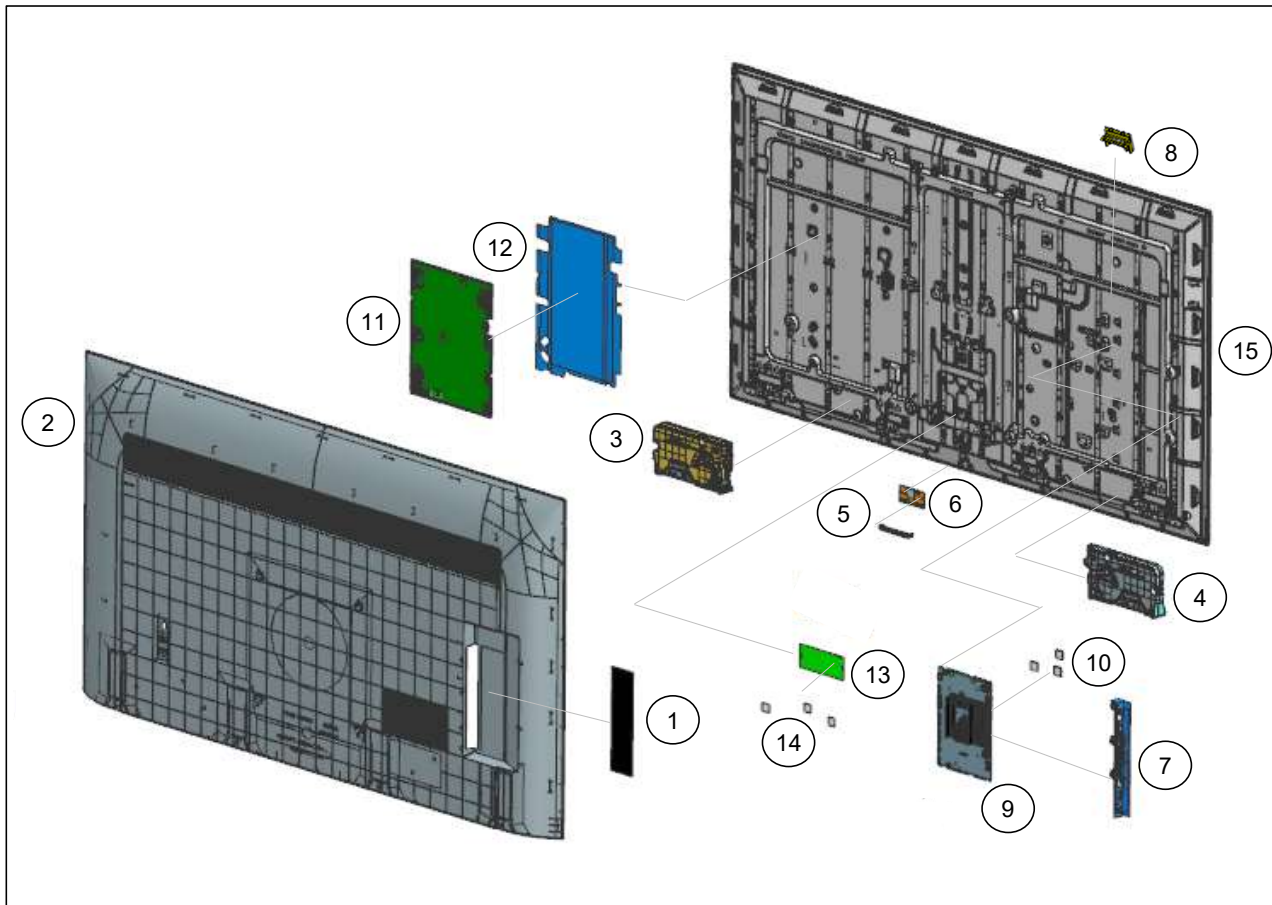
Hook positioning.



EXPLODED VIEW & PART LIST 65"







- Place the TV set facing downwards on a stable, level surface before disassembly and assembly of parts.
-  and shaded parts are critical for safety. Replace only with part number specified.
-  Parts contain confidential information. Strictly follow the instruction whenever the components are repaired and/or replaced

- \ (*) Parts are not stocked since they are seldom required for routine service. Some delays should be anticipated when ordering these components.
- \ Picture provided in this section might have slight difference from the actual sets.
- \ The reference number beside the part indicates the disassembly sequence.
- \ Remove screws before disassembly. Unplug connectors before disassembly






EXPLODED VIEW & PART LIST 65”

SET PART LIST

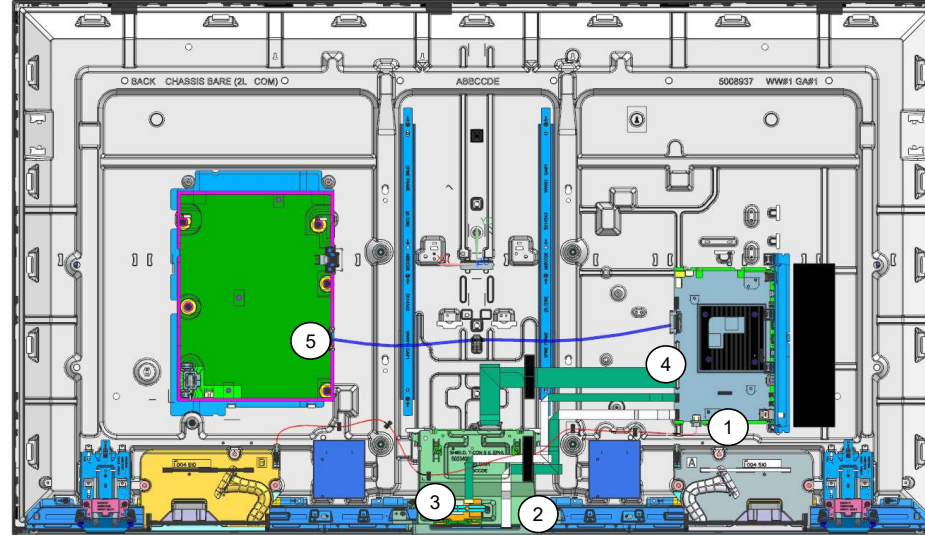
REF. NO	PART NO.	DESCRIPTION	REMARKS	
 9	A-5042-192-A	COMPL_SVC_BM5A_FE_EU	80K	Printed Circuit Board, incl. capacitors
 9	A-5042-194-A	COMP_SVC_BM5A_FE_EU_MIC	81K & 82K	
 11	1-004-423-61	GL02P-STATIC CONVERTER (TV)	Compatible	Internal Power Supply
 11	1-010-150-21	GL15P-STATIC CONVERTER (TV)	Compatible	
 15	A-5044-466-A	P-MOD (YSCM065CCO01)(SVC)		Liquid Crystal Display
 15	A-5044-465-A	P-MOD (YSCM065CCO01)(SVC)	81K RU3	

OTHERS PART

 1-005-621-12	C7L AC POWER CORD SETS (EU)	CEI & UKA – Compatible	Cable
 1-005-634-11	C7L AC POWER CORD SETS (EU)	CEI & UKA – Compatible	
 1-005-628-13	C7L AC POWER CORD SETS (UK)	UKA	

EXPLODED VIEW & PART LIST 65"

CONNECTOR



REF. NO	PART NO.	DESCRIPTION	REMARKS
1	1-006-513-44	CONNECTOR ASSY 4P (SP)	CN3550(BM5A)/CN6600(BM5STY)/CN6603 (BM5ST)-SP(1)
1	1-006-513-34	CONNECTOR ASSY 4P (SP)	Compatible
2	1-006-510-11	FLEXIBLE FLAT CABLE 25P	CN1200(BM5A)-CN102(HT2)(1)
3	1-006-506-11	FLEXIBLE FLAT CABLE 20P	-
3	1-006-505-11	FLEXIBLE FLAT CABLE 20P	CN3801(BM5A)-J1(WIFI/BT)(1)
4	1-010-543-21	FLEXIBLE FLAT CABLE 51P	Compatible
4	1-010-542-12	FLEXIBLE FLAT CABLE 51P	CN4200(BM5A)-U1(TCON)(1)
5	1-006-502-23	CONNECTOR ASSY 30P	Compatible
5	1-006-502-11	CONNECTOR ASSY 30P	CN1701(BM5A)-CN6401(GL)(1)

