

# SAMSUNG

## Samsung Portable SSD T7 Shield

### User Manual

MU-PE1T0S MU-PE2T0S MU-PE4T0S

MU-PE1T0K MU-PE2T0K

MU-PE1T0R MU-PE2T0R



# DISCLAIMER

SAMSUNG ELECTRONICS CO., LTD. RESERVES THE RIGHT TO CHANGE PRODUCTS, INFORMATION AND SPECIFICATIONS AT ANY TIME WITHOUT NOTICE.

Information in this document is provided in connection with products of Samsung Electronics Co., Ltd. (“Samsung”). Product descriptions and specifications contained in this document are for reference purposes only. All information discussed in this document may change at any time, without notice, and is provided on an “AS IS” basis, without warranties of any kind. This document and all information in this document remain the sole and exclusive property of Samsung. No license of any patent, copyright, mask work, trademark or any other intellectual property right is granted by this document, express or implied, by estoppel or otherwise. Except as provided in Samsung’s terms and conditions of sale for such products, Samsung disclaims any express or implied warranty, relating to sale and/or use of Samsung products, including liability or warranties relating to fitness for a particular purpose, merchantability, or infringement of any patent, copyright or other intellectual property right. Samsung products are not intended for use in life support, critical care, medical, safety equipment, or similar applications where product failure could result in loss of life or personal or physical harm, or any military or defense application, or any governmental procurement to which special terms or provisions may apply. For updates or additional information about Samsung products, contact your local Samsung store or visit Samsung’s website (<https://www.samsung.com>). Samsung and Samsung logos are registered trademarks of Samsung Electronics Co., Ltd. or its affiliates in the United States and other countries. Other names and brands may be claimed as the property of others.

Copyright © 2022, Samsung Electronics Co., Ltd. All rights reserved.

# Samsung Portable SSD T7 Shield

## User Manual

### Table of Contents

<b>Introduction .....</b>	<b>4</b>
<b>Getting Started .....</b>	<b>6</b>
What's In the Box.....	6
How to Connect / Disconnect .....	6
System Requirements.....	7
Capacity of T7 Shield Displayed on the System.....	7
<b>Using T7 Shield.....</b>	<b>8</b>
Connecting T7 Shield.....	8
Disconnecting T7 Shield.....	8
Installing Samsung Portable SSD Software 1.0.....	8
<b>Caution.....</b>	<b>20</b>
Back Up Important Data.....	20
Safeguard User Password .....	20
Connect to Certified Devices; Compliance with Safety Standards .....	20
Avoid Shock, Vibration .....	20
Do Not Disassemble, Damage, or Remove Label.....	20
Use Genuine Accessories.....	20
Use in Appropriate Temperature and Humidity.....	21
Use No Excessive Force in Unplugging the Cable .....	21
Perform Virus Scans and Updates.....	21
Clean the Product.....	21
Keep Away from Children, Infants and Animals .....	21
Keep Away from Environment Excess to IP65 rate .....	21
FAQ.....	22
<b>Product Specifications and Certifications.....</b>	<b>24</b>
Product Specifications.....	24
Regulatory Compliance.....	24
KC (Korea Certification) .....	24
FCC (Federal Communication Commission) .....	25
CE (Conformity European).....	25

# Introduction

The T7 Shield Portable Solid-State Drive (PSSD) brings together both the exceptional performance photographers and videographers crave, and the durability that life demands. Intelligently designed from the inside out by Samsung, the lightweight and pocket-sized T7 Shield gives consumers and professional content creators the confidence to store data on-the-go knowing that their data is protected even if the device is dropped, exposed to water or dust, or carried in desert heat. It is the latest addition to the popular Samsung Portable SSD T-series and comes with Samsung software for added security, as well as access to Samsung's unique Magician management software suite.

## Professional Grade Performance and Great Capacity

Samsung's Portable SSD T7 Shield uses the NVMe™ protocol to take full advantage of the USB 3.2 Gen2 interface, offering maximum bandwidth of up to 10Gbps. T7 Shield's exceptional performance helps make transferring photos and video fast and easy, offering read/write speeds of up to 1,050/1,000MB/s<sup>1)</sup> respectively, which is more than 1.9 times faster than current SATA-based portable SSDs and more than 9.5 times faster than external HDDs<sup>1)</sup>. The T7 Shield is also uniquely optimized to provide outstanding sustained read and write performance, even as the drive fills up, supporting heavy, continuous tasks such as high quality video recording, editing, and encoding, and helping to alleviate concerns over video rendering or quality that may be caused by inconsistent performance. The T7 Shield will be available in 1TB, 2TB and 4TB capacities, enabling users to store hours of 8K video and thousands of next-generation photos.

<sup>1)</sup> Based on internal test results

## Designed for Durability – Dust, Water and Drop Resistance

For years, Samsung's Portable SSD T-series were renowned for being compact, trustworthy and easy to use on the go. Samsung is now adding outstanding durability to its Portable SSD portfolio with its T7 Shield. The new product is built with a strong aluminum body and covered with rubber for toughness. The aluminum adds the robustness and excellent heat dissipation due to high thermal conductivity. The tough rubber coating makes the device easy to grip and helps to protect against scratches or stains, and withstand external shocks. For added protection, Samsung also integrated two barriers surrounding the USB-connector port to help block out water and dust. The T7 Shield has obtained the IP65<sup>2)</sup> certification from an internationally accredited certification lab<sup>3)</sup> and has passed internal tests<sup>4)</sup> involving drops from up to three meters (9.8 feet). With this durable design, users can take their T7 Shield on an outdoor photo shoot or travel adventure without worrying about damage from the natural environment or sheer bad luck.

<sup>2)</sup> IP Rating refers to IP Code or Ingress Protection Code which is defined in IEC 60529 and rates the degree of protection provided by mechanical casings and electrical enclosures against dust and water.

<sup>3)</sup> The certification of the IP rate (KCTL) is effective in countries and accreditation organizations that are members of the ILAC. (104 countries) If the T7 Shield has been immersed in water, dry it thoroughly before using it. Damage caused by liquid and dust are not covered under warranty.

<sup>4)</sup> The internal free fall shock test was conducted under controlled conditions.

## Built for Use Indoors and Out

With a non-operating temperature range from -40°C to 85°C and operating temperature range from 0°C to 60°C, Samsung Portable SSD T7 Shield is designed to withstand extreme temperatures. This makes it ideal for those who love the outdoors, and wants extra durability, or the adventurous photographer or videographer on the go.

## Management software

The T7 Shield comes embedded with upgraded software for PCs and Macs to help you set up a password and get the latest firmware updates. You can also download the mobile app for Android smartphones and tablets. In addition, Magician software supports Samsung Portable SSD (from Magician 7.0, released on Sep 2021) so that users can benchmark performance, PSID revert for factory reset, use security functions (password registration) and receive firmware updates.

## Multi-device compatibility

Samsung Portable SSD T7 Shield is designed to be connected to your life's devices. The T7 Shield is power-efficient and meets the USB power standard, which allows it to be compatible with a variety of host devices. Specifically, to prolong its battery life, the T7 Shield is designed to operate on low power when connected to most mobile devices (mobile phones/tablets). In addition, the T7 Shield provides fast, sustained write performance, making it suitable for use by content creators and professionals with broadcasting cameras. With Samsung's expertise in manufacturing a variety of devices from TV to mobile products, the latest portable SSD T7 Shield provides wide compatibility.

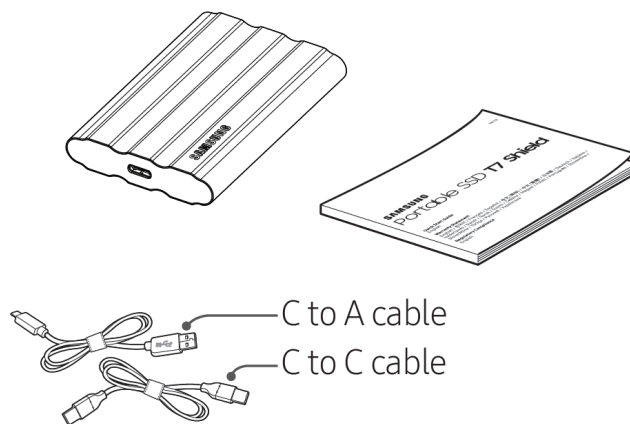
\* Compatibility with host devices may vary. Please see the list of compatible devices on [www.samsung.com/support](http://www.samsung.com/support).

# Getting Started

Before using the Samsung Portable SSD T7 Shield (referred to as “T7 Shield”), please read this User Manual thoroughly so that you know how to use the product in a safe and appropriate manner.

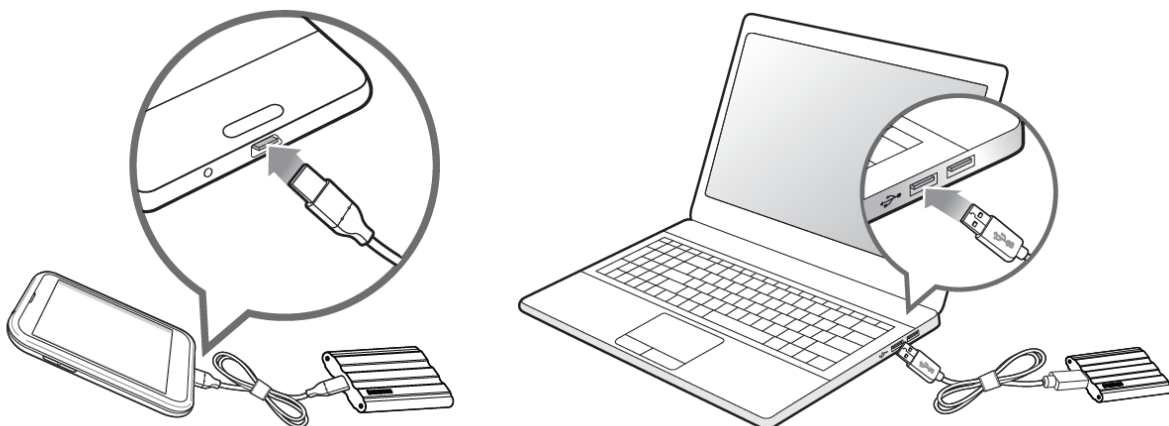
## What’s In the Box

- Samsung Portable SSD T7 Shield
- USB 3.2 Gen 2 USB C to A cable
- USB 3.2 Gen 2 USB C to C cable
- Quick User Manual & Warranty Statement



## How to Connect / Disconnect

- ① Select the cable compatible with your device. Connect one end of the cable to the device and the other end to the T7 Shield.
- ② To protect your data, always use “Eject”, “Unmount” or “Safely Remove Hardware” when disconnecting the T7 Shield.



## System Requirements

### 1. USB 3.2 Gen 2 (10 Gbps) Interface Support

USB (Universal Serial Bus) is a serial input/output interface standard for connecting various devices. T7 Shield's data transfer speed is optimal with USB 3.2 Gen 2 (10 Gbps) and using lower versions such as USB 3.2 Gen 1 (5Gbps), USB 2.0 and 1.1 may result in lower performances due to interface limitations inherent in such lower versions.

\* Performance may vary depending on user's system to which the T7 Shield is connected. Since the T7 Shield's performance may be suboptimal if your system does not support UASP (USB Attached SCSI Protocol) even when using USB 3.2 Gen 2 connections, please make sure that your system supports UASP.

### 2. Operating System Requirements

- Windows OS: Windows 7 or higher
- Mac OS: Mac OS X 10.10 or higher
- Android: Android Lollipop or higher

\* The 4TB version of the T7 Shield is only compatible with a 64-bit OS.

### 3. File Formats

T7 Shield is pre-formatted to use exFAT files, which are supported by Windows OS, Mac OS, and Android operating systems. As specified in the table below, whether data formatted to a certain format may be read or written to your computer vary depending on the OS. If you use the T7 Shield on a single OS, we recommend that you format it using the appropriate file format for that OS.

**Table 1:** Read/write restrictions for file systems by each operating system.

File Formats	Windows OS	Mac OS
exFAT	Both read and write	Both read and write
NTFS	Both read and write	Read only
HFS	Not recognizable	Both read and write

\* When using exFAT across multiple operating systems, data writing may become locked and you may only be able to read data. If this occurs, you can restore write access by following the instructions below.

- Mac OS: Connect the T7 Shield to your Mac again, and perform Eject.
- Windows OS: When receiving notice that write access is disabled, click "Scan and fix" to perform Check Disk (CHKDSK). In case you closed the notice without performing Check Disk, you may alternatively do the following: select the drive → right-click → Properties → Tools → Check.

## Capacity of T7 Shield Displayed on the System

The capacity reported by the system to which the T7 Shield is connected may differ from the labeled capacity, due to the difference between the decimal and binary systems of measurement and other factors including the drive's partitioning and blocking.

\* e.g.: Windows OS: 1 GB = 1,024MB, Mac OS: 1GB = 1,000MB

Labeled capacity uses decimal system and is convertible as below:

1 GB=1,000,000,000 bytes, 1 TB=1,000,000,000,000 bytes

Your computer may demonstrate a lower capacity if a different measurement standard is used.

# Using T7 Shield

## Connecting T7 Shield

Select the cable compatible with your device. Connect one end of the cable to the device and the other end to the T7 Shield.

## Disconnecting T7 Shield

Be sure to use the Safely Remove Hardware feature whenever disconnecting the T7 Shield. Unplugging the T7 Shield from your computer without using the Safely Remove Hardware feature may cause data loss or damage to the T7 Shield.

\* Samsung shall not be liable for loss of user data or product damages caused by the user's failure to comply with this instruction.

## Installing Samsung Portable SSD Software 1.0

(For Security Mode and Firmware update)

(Installing the software involves the same steps as T7, so please see the pictures for T7)

### For PCs and Macs

In the Explorer (Windows OS) or Desktop (Mac OS), select the "Samsung Portable SSD 1.0" application.

Windows OS: SamsungPortableSSD\_Setup\_Win\_1.0.exe

Mac OS: SamsungPortableSSD\_Setup\_Mac\_1.0.pkg

\* Formatting partition of the T7 Shield after purchase will cause Samsung Portable SSD Software to be deleted. In such case, please download the "Samsung Portable SSD Software 1.0" application from Samsung's website (<http://www.samsung.com/samsungssd>).

\* Samsung Portable SSD Software 1.0 is only for the T7 Series (T7 Shield, T7 Touch, T7), so installing Samsung Portable SSD Software 1.0 will not automatically remove any previous version of Samsung Portable SSD Software (previous version) for T3, T5, or X5 already installed on your computer.



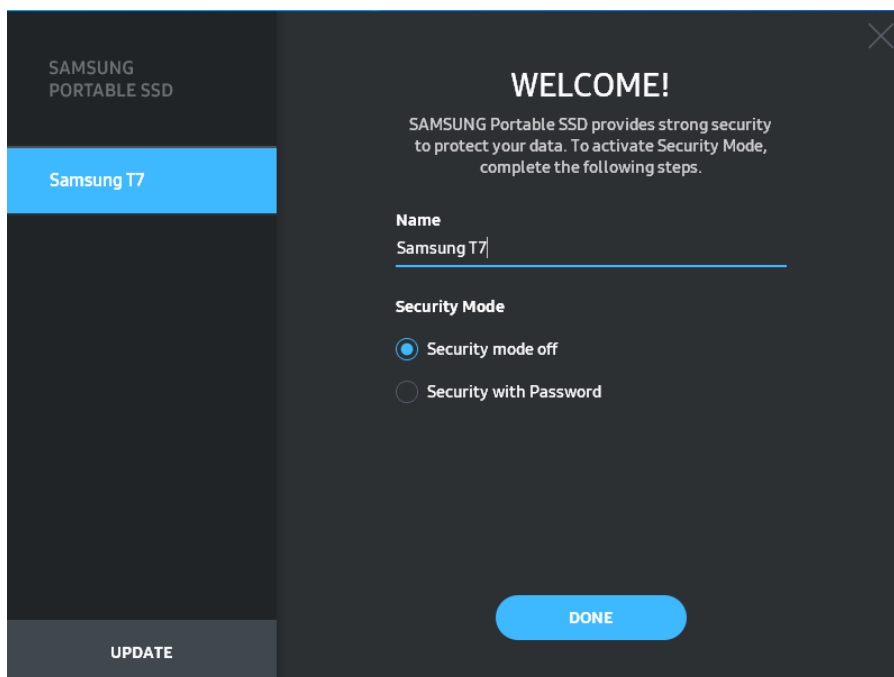
## 1. Running Samsung Portable SSD Software 1.0

Select “Samsung Portable SSD Software 1.0” application icon on Desktop.

\* In case of Mac OS, Samsung Portable SSD Software 1.0 may not operate without the requisite device (driver) enabled.

## 2. Setting Security Mode (Optional)

Security mode is optional. You may use the T7 Shield without enabling the security/update feature. Please follow the instructions that appear on each screen of the Samsung Portable SSD Software 1.0. Once you agree to the terms and conditions of the Samsung Portable SSD Software 1.0, you can set your password through the following steps. (Certain elements of Samsung Portable SSD Software 1.0 will be installed on the user’s computer.)

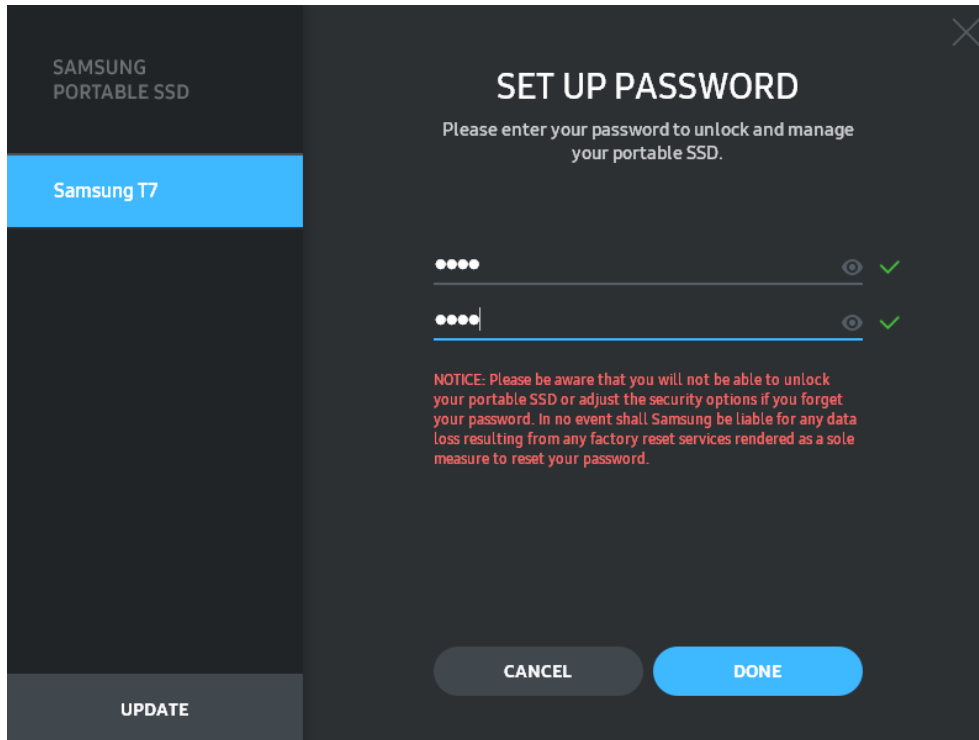


- **Security mode off**

You may use the T7 Shield without turning security mode on.

- **Security with Password**

You may enable security mode with your password. If you have forgotten your password, you must restore the T7 Shield to factory settings through online service rendered by our customer service centers. Please keep it in mind that all user data placed in the T7 Shield will be lost by factory reset. Please do not forget your password.



\* Samsung shall not be liable for loss of user data caused by forgotten or stolen passwords. In an effort to keep the device as secure as possible, there is no password recovery option. Users who have forgotten their passwords must have the T7 Shield restored to factory settings through online service rendered by our customer service centers. Please keep it in mind that all user data placed in the T7 Shield will be lost by factory reset. Please do not forget your password.

\* **Only Mac OS**, “Samsung Portable SSD 1.0” driver is required for the security functionality. If the kernel extension is not installed, complete the installation by following the sequence on the package installation. Once installed, disconnect and reconnect the T7 Shield to confirm that the installation was successful.

\* **Only Mac OS**, “Samsung Portable SSD 1.0” driver and some 3rd party drivers, including SATSMARTDriver, are mutually exclusive. If you wish to work with SATSMARTDriver, please remove Samsung Portable SSD driver and install SATSMARTDriver in accordance with the following.

\* When both Samsung Portable SSD Driver and SATSMARTDriver are installed and conflict is detected, instructions like the following will be available:

**How to remove Samsung Portable SSD Driver and install SATSMARTDriver**

```
#sudo kextunload /Library/Extensions/SamsungPortableSSDDriver.kext
```

```
#sudo kextload /Library/Extensions/SATSMARTDriver.kext
```

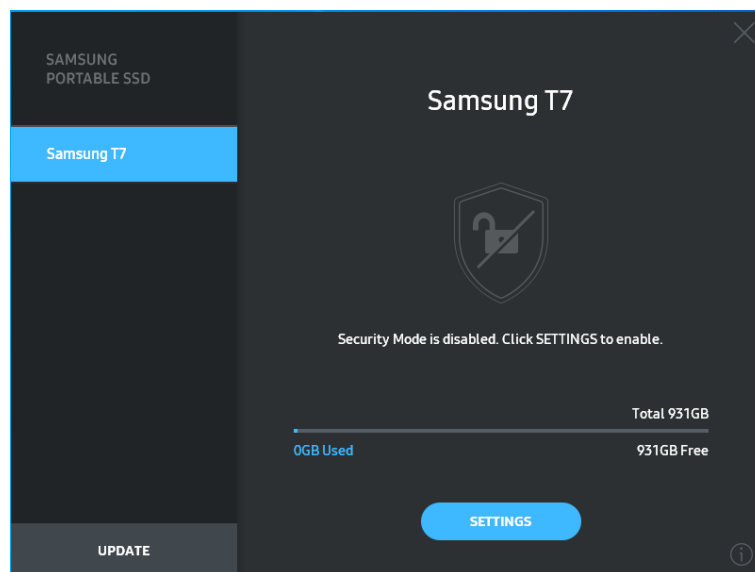
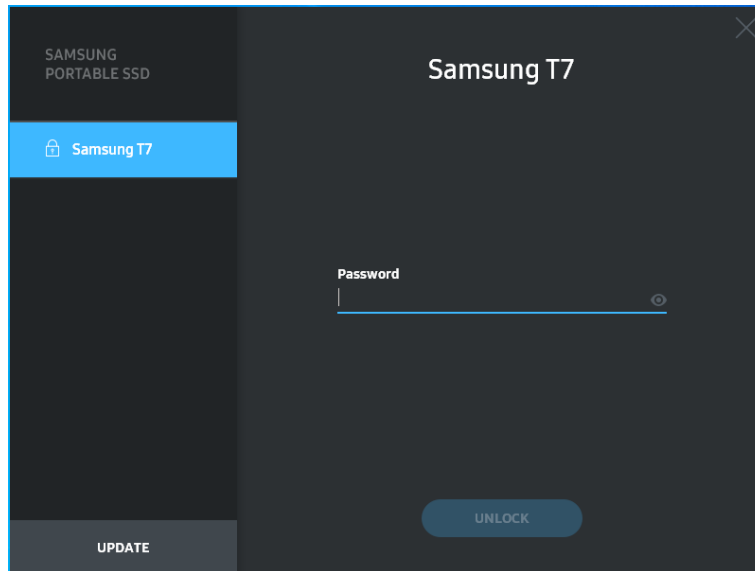
**How to remove SATSMARTDriver and install SamsungPortableSSDDriver**

```
#sudo kextunload /System/Library/Extensions/SATSMARTDriver.kext
```

```
#sudo kextload /Library/Extensions/SamsungPortableSSDDriver.kext
```

### 3. Unlock

If you've enabled security mode, you must enter your password and click the "UNLOCK" button before accessing the data in the T7 Shield every time you connect the T7 Shield to your computer. If you fail to unlock, your access will be confined to the capacity of about 128MB allocated to SamsungPortableSSD\_1.0.exe and SamsungPortableSSD\_1.0.app, which means that you will be locked out of the protected data.



\* Depending on the user environment, the "SamsungPortableSSD Software 1.0" may not be executed automatically. In such case, please double-click the "SamsungPortableSSD Software 1.0" icon in Explorer on Windows or the Desktop on Mac.

\* Security mode may be supported by certain versions of each OS (or higher) only. Please check whether your OS meets the system requirements and supports security mode.

\* If security mode is enabled, only the capacity of security partition in the T7 Shield will be initially displayed. This security partition is approximately ~128 MB. Once you enter your password and unlock successfully, the full capacity of the T7 Shield will be displayed in your system.



\* You may choose another Samsung Portable SSD by clicking the T7 Shield's name on the left panel. Samsung Portable SSD Software lists the entire host devices (up to 6) to which Samsung Portable SSD is connected.

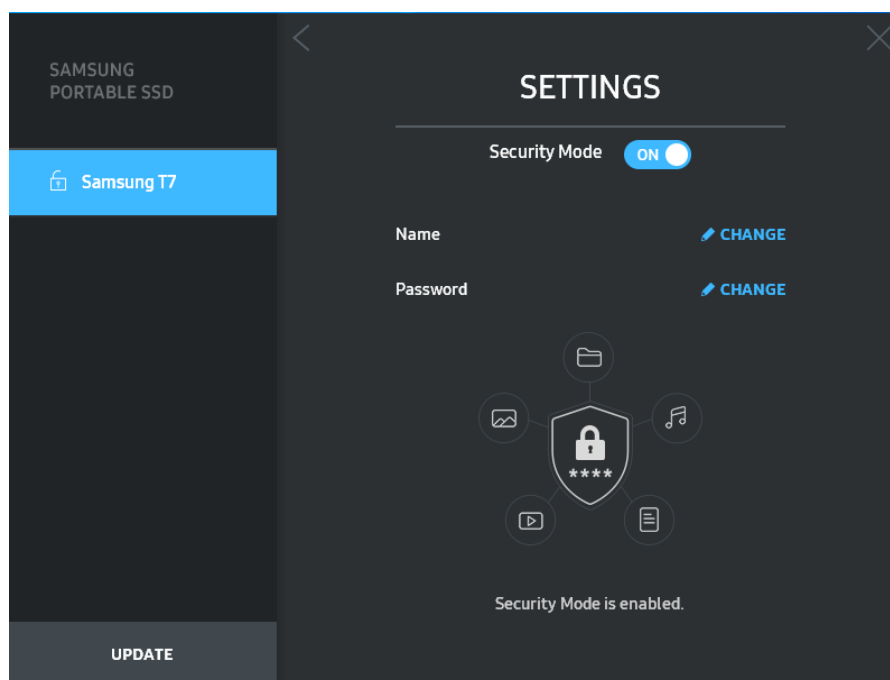
#### 4. Change in Settings

You can change your security mode/user name/password settings of the T7 Shield by clicking on the "SETTINGS" button on the main page. When using a computer without the security software, you can download the installation file ("SamsungPortableSSD\_Setup\_Win\_1.0.exe" for Windows OS, "SamsungPortableSSD\_Setup\_Mac\_1.0.pkg" for Mac OS) from Samsung's website (<http://www.samsung.com/samsungssd>) and install it to change the settings.

- **Security Mode**

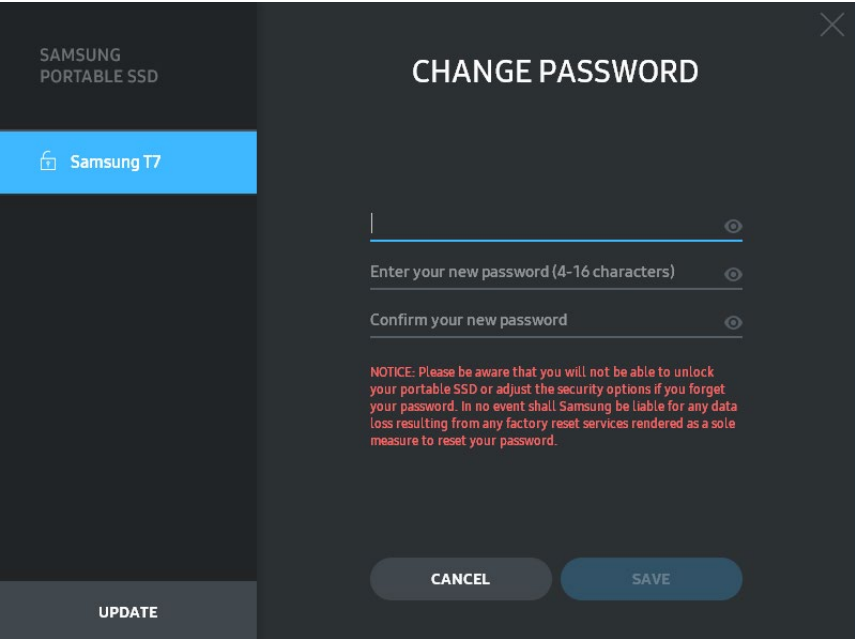
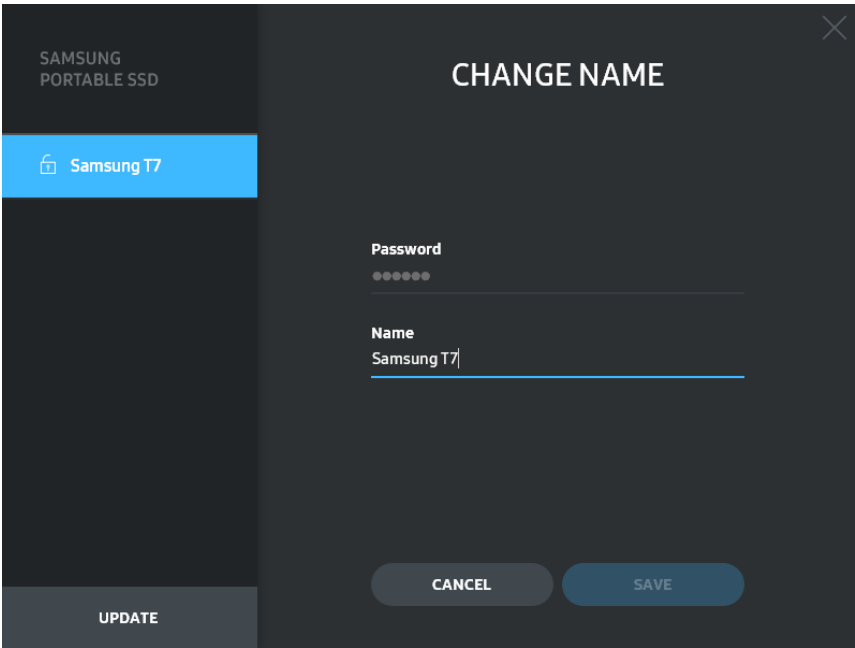
To turn security mode ON or OFF, please click the toggle button and enter the correct password. Refer to the table below for a description of the T7 Shield's security status indicator.

Status		Description
	Locked	This signifies that security mode is on, but the user has not unlocked the T7 Shield. You can unlock T7 the Shield on the unlock page.
	Unlocked	This signifies that security mode is on and user has already unlocked the T7 Shield. You can see the storage capacity on the main page and change settings.
No icon	Security mode OFF	This is when security is OFF. You can see the storage capacity on the main page and change settings.



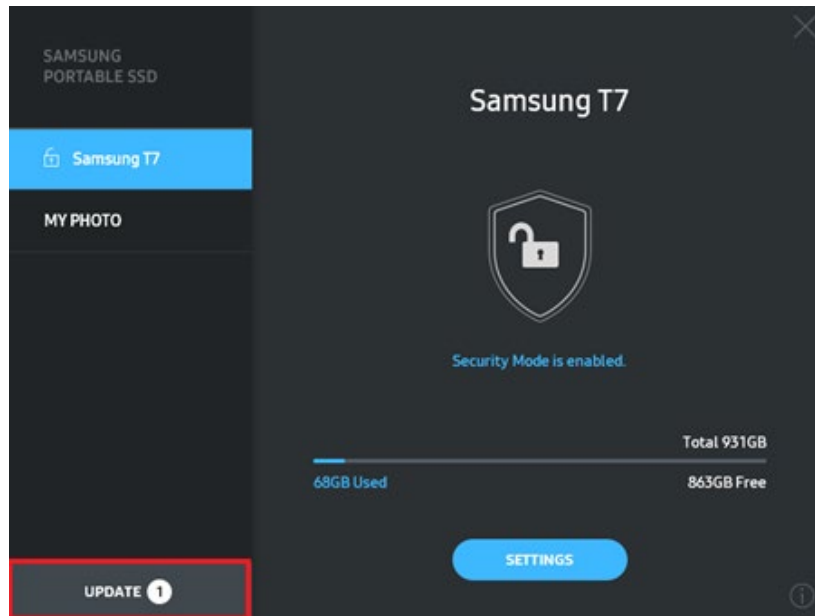
- **Name/Password**

You can change your Name and Password. Please click the “CHANGE” button to change your password.

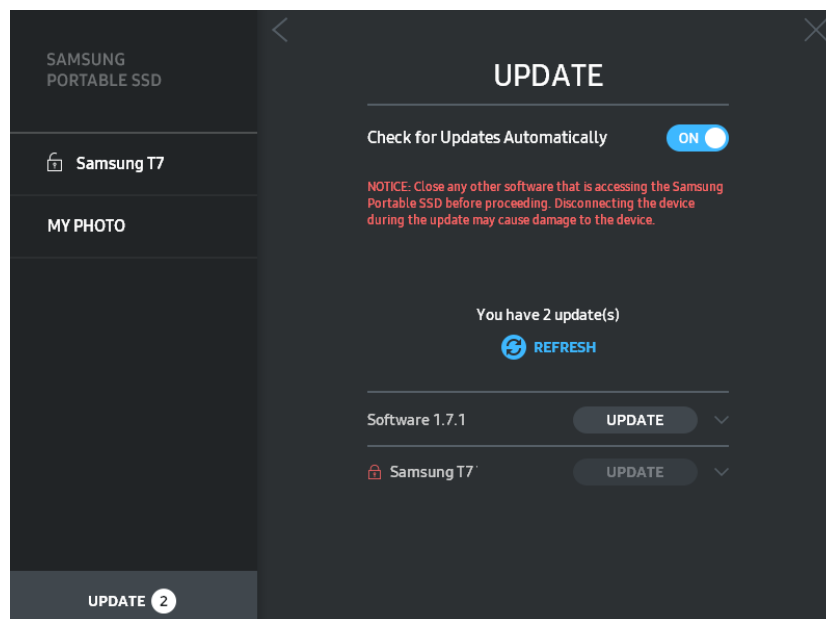


## 5. Update Software and Product firmware


If your computer is connected to the internet, the number of Software/Firmware updates available will be shown on the bottom of the left panel.



By clicking on the “UPDATE” button (  ), you may go to the update page.



By clicking on the “UPDATE” button (  ), you can download the latest software (“SW”) or firmware (“FW”) and update it.

By clicking on the “Check for Update Automatically” toggle button (  ), you can choose whether to have SW and FW automatically updated whenever Samsung Portable SSD is connected.

By clicking on the refresh button (  ), you can refresh the update status.

By clicking on the arrow down button (▼), you can see detailed information on the applicable update.

\* When the user changes “Check for Update Automatically” from OFF to ON, SW does not refresh update information immediately. Update information is refreshed when either the user clicks on the refresh button or Samsung Portable SSD is connected to the computer.

\* For FW updates, security mode needs to be OFF. Any access to the T7 Shield, including copying/deleting /formatting partition, while FW is being updated, may cause abnormal behavior of or damage to the T7 Shield.

\* Once FW has been updated, please disconnect and reconnect the T7 Shield to ensure that the FW update was successful.

## 6. Delete “Samsung Portable SSD Software”

Deleting software on each OS

Computer OS		Description
Windows OS	If user installed SW using SamsungPortableSSD_Setup_Win_1.0.exe	Software can be uninstalled via “Uninstall or change a program”. Go to Control panel → Programs → Programs and Features → Uninstall or change a program → Double-click “Samsung Portable SSD Software 1.0” and select “Yes”
	If user installed SW using SamsungPortableSSD_1.0.exe	Software need to be deleted manually by executing PSSD_Cleanup.bat in application installation path. (Normally C:\Program Files(x86)\Samsung\Portable_SSD\PSSD_Cleanup.bat) Please refer to FAQ in the Samsung website ( <a href="http://www.samsung.com/samsungssd">http://www.samsung.com/samsungssd</a> ) for more details.
Mac OS		Application needs to be deleted manually by executing CleanupT7PlusAll.scpt in SW installation path. (Normally #osascript ~/Library /ApplicationSupport/Portable_SSD/CleanupT7PlusAll.scpt) *Third party cleaner such as AppCleaner may not delete “Samsung Portable SSD” SW completely. Please refer FAQ in the Samsung website ( <a href="http://www.samsung.com/samsungssd">http://www.samsung.com/samsungssd</a> ) for detail information.

## 7. Select SW Default Language

Default language may be selected under Regional Setting.

## For Android devices

### 1. Download Application from Google Play Store

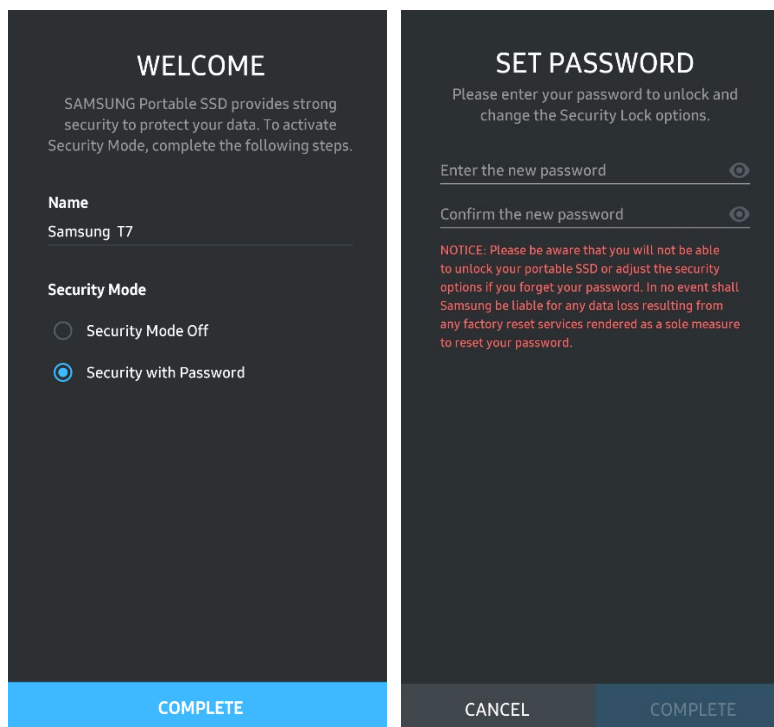
You may download “Samsung Portable SSD 1.0” application from App store.

### 2. Running the Application

Please run the installed Application.

### 3. Setting Security Mode

Password stored in the T7 Shield after connecting to the computer can also be used on Android.

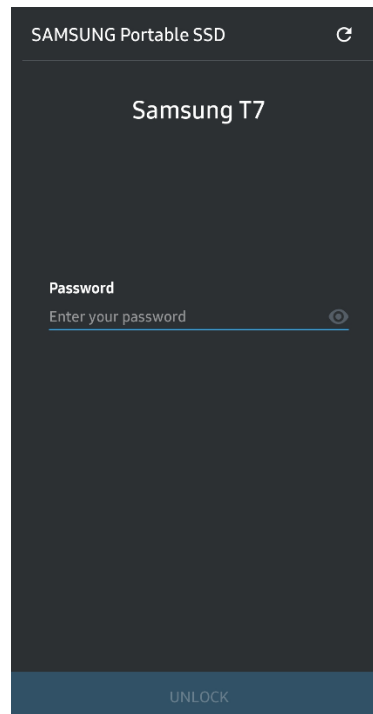


\* Samsung shall not be liable for loss of user data caused by forgotten or stolen passwords. In an effort to keep the device as secure as possible, there is no password recovery option. Users who have gotten their passwords must have the T7 Shield restored to factory settings through online service rendered by our customer service centers. Please keep it in mind that all user data placed in the T7 Shield will be lost by factory reset. Please be cautious not to forget your password.



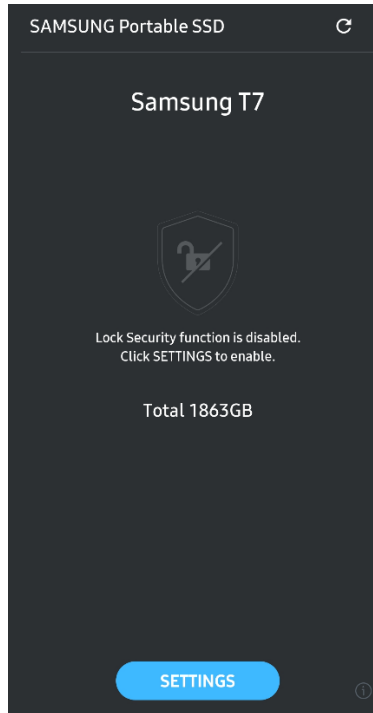
#### 4. Unlock T7 Shield

If you've enabled security mode, you must enter your password and click the "UNLOCK" button before accessing the data in the T7 Shield every time you connect the T7 Shield to your device.



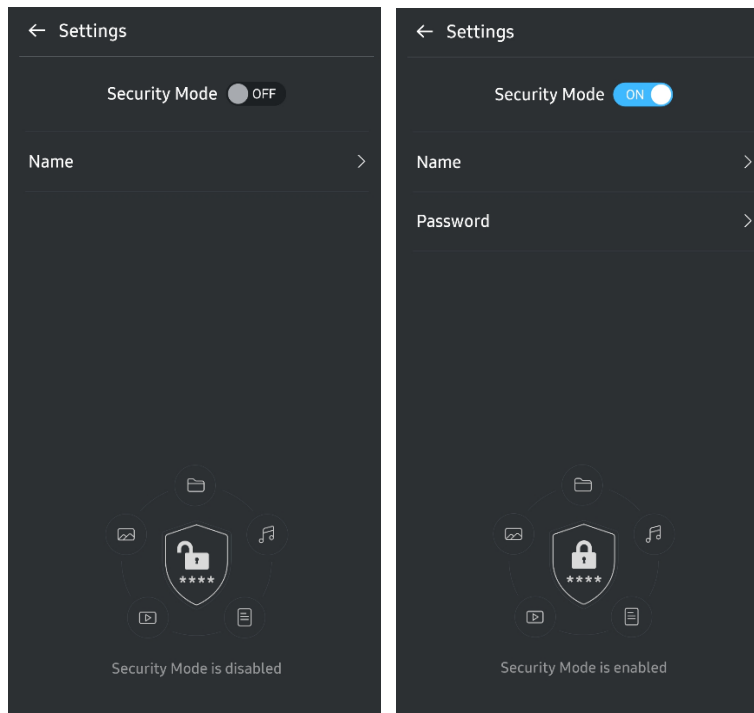
### 5. Home Screen

If security mode is not enabled in your T7 Shield, you can access the Settings screen by clicking on the “SETTINGS” button on the main page.





### 6. Settings Screen

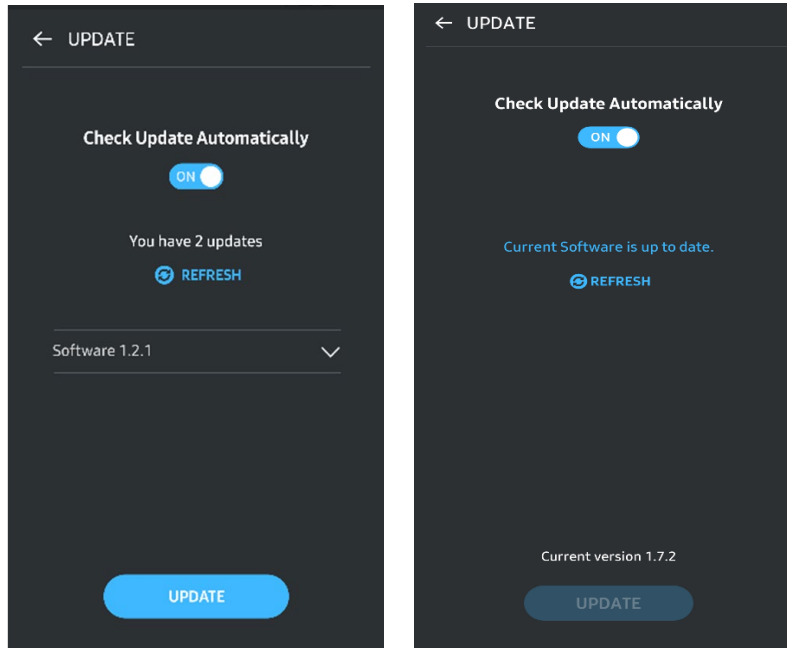
You can change the user name or password and turn ON/OFF security mode.



## 7. Update SW and FW

To enter the update screen, click the Update page button (  ) on the Home screen. If any update is available, the “UPDATE” button (  ) will be highlighted. If there is an application to be updated, clicking the UPDATE button will show the link to ‘App store’.

\* Firmware update requires connection to a computer.



## 8. Deleting “Samsung Portable SSD” Application on Android

Open your android device’s Settings app and tap Apps or Application manager. Tap “Samsung Portable SSD” and uninstall.

## 9. Select Default Language

Default language may be selected under Android system language setting.

\* Path: Android apps - Settings – Language

## Caution

Failure to follow the instructions and cautions in each section of this manual may result in injury to the user, damage to the product or data loss. Please read thoroughly before using the product.

## Back Up Important Data

No computer system is absolutely secure. Samsung does not provide any kind of guarantee and/or warranty against data loss on the T7 Shield under any circumstances. Samsung disclaims any and all liabilities for emotional distress and/or physical and/or monetary damages or losses of any kind caused by loss and/or restoration of data stored on the T7 Shield. Be sure to back up important data at all times.

## Safeguard User Password

Because the T7 Shield utilizes advanced encryption technologies, user data cannot be accessed if the user's password is lost or forgotten. Please write down your password and store it in a safe place. If the T7 Shield cannot be used due to the user's failure to enter the correct password, the only way to restore the T7 Shield is to reset it to factory settings via online services provided by a Samsung Service Center. However, restoring the device to factory settings will result in a complete loss of all user data. Please be sure to regularly back up important data.

## Connect to Certified Devices; Compliance with Safety Standards

The T7 Shield has been designed to comply with power consumption limitations according to safety standards. Please use devices and interface ports that comply with related standards.

## Avoid Shock, Vibration

The T7 Shield operated without any issues and only suffered limited surface damage after drop tests conducted under controlled conditions. The drop tests involved 4 free falls from a height of 3 meters onto a steel floor. However, the T7 Shield's drop resistance level may vary depending on the actual environment, and damage caused by such impact is not covered under warranty.

## Do Not Disassemble, Damage, or Remove Label

Do not disassemble the T7 Shield or damage or remove the stickers or labels on the T7 Shield. All warranties will be void if the T7 Shield has been disassembled, damaged, or if the label has been removed by the user. For the purpose of repairs, please only contact a Samsung Service Center or other service providers designated by Samsung.

## Use Genuine Accessories

Always use genuine parts and accessories certified by Samsung. Samsung shall not be liable for damages to the T7 Shield or loss of user data caused by use of non-genuine parts

or accessories.

## **Use in Appropriate Temperature and Humidity**

Only use the T7 Shield in an appropriate environment: temperature range between 5°C - 35°C and humidity level between 10 - 80%.

## **Use No Excessive Force in Unplugging the Cable**

Do not pull or unplug the T7 Shield's cable using excessive force. It may cause an unstable connection or damage to the connector.

## **Perform Virus Scans and Updates**

Please follow the following safety guidelines to prevent virus infections.

- Install an anti-virus program on the computer to which the T7 Shield is connected, and regularly perform virus scans.
- Always update the operating system and the anti-virus software to the latest version.
- After downloading any files to the T7 Shield, always perform a virus scan before opening the file.

## **Clean the Product**

We recommend cleaning the T7 Shield by gently wiping its surface using a soft cloth. Do not use water, chemical substances or detergent. They may cause discoloration or corrosion in the T7 Shield's exterior, and may also cause fire or electric shock.

## **Keep Away from Children, Infants and Animals**

Small parts pose risk of suffocation. Please keep the T7 Shield away from the reach of children, infants or animals to prevent them from putting the T7 Shield or its parts in the mouth.

## **Keep Away from Environment Excess to IP65 rate**

The T7 Shield has a \*IP65 rating based on internal testing conducted under controlled conditions. Water and dust resistance capabilities may vary depending on the actual environmental conditions. Damage caused by liquid and dust are not covered under warranty.

\*IPX5 Test conditions: The T7 Shield was exposed to fresh water projected from a nozzle ( $\Phi 6.3\text{mm}$ ) 3 meters away at 12.5 l/min for 3 minutes.

IP6X Test condition: The T7 Shield was exposed to  $2\text{kg/m}^3$  of active dust with pressure under 2kPa for 8 hours in a vacuum chamber. IP65 rating are tested under controlled conditions.

## FAQ

<p>I cannot run the Samsung Portable SSD Software 1.0.</p>	<p>The Samsung Portable SSD Software 1.0 can only run on certain OS versions (or newer).</p> <p>Please see below for supported OS versions:</p> <ul style="list-style-type: none"> <li>• Windows OS: Windows 7 or higher</li> <li>• Mac OS: Mac OS X 10.10 or higher</li> </ul>
<p>The “USB storage unexpectedly removed” message appears on the status bar of my mobile device.</p>	<p>In order to use the Samsung Portable SSD Software 1.0, permission to access the USB device is required. This message appears when the access permission is removed from the mobile device. When you launch the mobile Samsung Portable SSD app, you can use the T7 Shield normally again.</p>
<p>When I connect the T7 Shield to devices other than a PC, they do not recognize the T7 Shield .</p>	<p>The T7 Shield was developed for use with Windows OS, Mac OS PCs and mobile devices. When connected to devices other than those, the T7 Shield may not be recognized or use of its features may be restricted depending on their level of support. Moreover, if you have enabled security mode with Password, you cannot enter your password from non-PC or non-mobile devices and thus will be unable to access data stored on the T7 Shield. Please disable the security mode before using the T7 Shield with such devices.</p>
<p>I have lost my password. Can I disable security mode?</p>	<p>No, you cannot. If you lose your password, you cannot disable security mode. Therefore, make sure not to lose it.</p>
<p>My T7 Shield is not recognized by devices.</p>	<p>Please make sure that the T7 Shield is connected securely to the USB port.</p> <ul style="list-style-type: none"> <li>• Some PCs may not recognize the T7 Shield when connected to the USB 2.0 port if the current exceeds the maximum limit (500 mA) described in the Power Specifications. In such cases, please try a different USB port.</li> <li>• If you use cables other than the one included in the product package, the T7 Shield may not be recognized.</li> </ul> <p>If the T7 Shield is correctly connected but still not recognized by devices, find the Service Centers specified in the User Manual or on the Samsung website (<a href="http://www.samsung.com">http://www.samsung.com</a>), and make an inquiry.</p>
<p>What are the water-resistant and dust-resistant conditions for the T7 Shield?</p>	<p>The T7 Shield is IP65 rated.</p> <p>However, the water and dust resistance capabilities may vary depending on the environmental conditions. The warranty does not cover damage caused by liquid or dust.</p> <p>IP (Ingress Protection) rating and grade refer to water and dust resistance grades recognized through testing under controlled conditions.</p> <p>The conditions for the IP65 test are as follows:</p> <p>* IPX5 Test Condition: The device is exposed to fresh water projected from a nozzle (Φ6.3 mm) 3 meters away at 12.5 l/min for 3 minutes</p>

	<p>*IP6X Test Condition: The device is exposed to 2 kg/m<sup>3</sup> of active dust with pressure under 2 kPa for 8 hours in a vacuum chamber.</p> <p>(The tests above involve a jet spray of low-pressure fresh water and dust intrusion from multiple directions.)</p>
What are the conditions of the T7 Shield's drop test?	<p>Drop tests on the T7 Shield were performed under controlled conditions in the following manner:</p> <p>The T7 Shield was dropped (free-fall) onto a metal plate from up to 3-meters four times.</p> <p>The T7 Shield's drop resistance level may vary depending on the actual environmental condition, and damage caused by such impact is not covered under warranty.</p>
Does the warranty cover the T7 Shield in case dust immersion or intrusion occurs?	The T7 Shield's water and dust resistance capabilities may vary depending on the environmental conditions. The warranty does not cover damage caused by liquid or dust intrusion outside the restricted conditions.
Does the warranty cover a T7 Shield that's been impaired because of a fall?	The drop resistance level may vary depending on the actual environmental condition, and damage caused by such impact is not covered under warranty.
What should I do if the T7 Shield is immersed or sprayed with water?	First, remove moisture with a dry towel, tissue, etc. (joining part of a connector, in particular). Immersion and humidity may cause a failure, so stop using the T7 Shield until it is thoroughly dried.
Can I use the T7 Shield outdoors (e.g., rainy or snowy conditions)?	<p>When the water enters the connector area during usage, the leakage might impair the T7 Shield and the connected parts.</p> <p>Please do not use T7 Shield outdoors if it is raining or snowing.</p>
Are the cables that come with the T7 Shield also water-resistant?	The cables provided with the T7 Shield are not water-resistant. Do not use the cable while it is wet because it may cause a failure.

# Product Specifications and Certifications

## Product Specifications

Model	MU-PE1T0	MU-PE2T0	MU-PE4T0
Capacity	1TB	2TB	4TB
Interface	USB 3.2 Gen 2 (10Gbps), backwards compatible		
Data Transfer Speed*	1,050 MB/s		
Dimensions	57 x 86 x 12.5 mm (L x W x H)		
Weight	Up to 97 g		
Recommended User's System Specifications	Windows 7 or higher; Mac OS X 10.10 or higher; or Android Lollipop (version 5.1) or higher		Windows 7 (only 64-bit) or higher; Mac OS X 10.10 or higher; or Android Lollipop (version 5.1) or higher

\* Max data transfer speed is measured based on Samsung's internal testing standards with the enclosed USB cable. Performance may vary depending on host configuration. To reach maximum transfer speeds of 1,050 MB/s, the host device and connection cables must support USB 3.2 Gen 2 and UASP mode must be enabled.

## Regulatory Compliance



### KC (Korea Certification)

Identification Symbol: Refer below

Name: Samsung Electronics Co., Ltd.

Manufacturer / Manufacturing Country: Samsung Electronics Co. Ltd / Republic of Korea

Manufacturing Year and Month: Marked separately

Rating / Model: Refer below

Manufacturer: SAMSUNG Electronics Co. Ltd.

Model	Rating		Identification Symbol
MU-PE1T0	5V	1.5A	R-R-SEC-MU-PE1T0
MU-PE2T0	5V	1.5A	R-R-SEC-MU-PE2T0
MU-PE4T0	5V	1.5A	R-R-SEC-MU-PE4T0

\* This EMC compliant (Class B) device for homes is intended for use in domestic environment and can be used in any region.





## FCC (Federal Communication Commission)

United States Federal Communication Commission (FCC) regulations

Note that any alteration or modification, not authorized expressly by the party responsible for compliance to regulations, may result in voiding user's authority to operate the device.

This equipment has been tested and verified to comply with FCC CFR Part 15, Restrictions on Class B Digital Devices.

These restrictions are implemented to prevent the emission of harmful electronic magnetic waves when device is used in residential environments. This device generates, uses and emits radio frequency energy, and may cause harmful radio interference to wireless communications if not installed and used according to the guideline. However, it does not guarantee absence of radio interference in certain installed environments. If harmful radio interference occurs to a radio or TV reception when the device is turned on or off, the user must prevent such interference through one of the following measures.

- Adjust direction of or relocate reception antenna
- Increase distance between the device and the receiver
- Plug receiver and device on outlets on separate circuits
- Seek assistance from qualified radio/TV technicians or retailer
- This device complies with Part 15 of FCC regulations
- This device does not cause electromagnetic interference
- If any interference is received, including interference that may cause operational problems to the device, it may be operated on two conditions that ensure normal operation. This product was designed for indoor-use only.

\* FCC Notice: Note that any alteration or modification, not authorized expressly by the party responsible for compliance to regulations, may result in voiding the user's authority to operate the device.

Unique Identifier: Check the label on the product

Responsible Party: Samsung Electronics America QA Lab

19 Chapin Rd. Building D Pine Brook NJ 07058

Tel: 1-973-808-6362, Fax: 1-973-808-6361



## CE (Conformity European)

Hereby declares that this/these product(s) is/are in compliance with the essential requirements and other relevant provisions of Directive 2014/30/EU, 2014/35/EU and 2011/65/EU.

In door use only.



## EU Compliance Contact information

Samsung  
PO Box 12987, Dublin. IE or  
Euro QA Lab, Saxony Way, Yateley, GU46 6GG UK



## WEEE (Waste Electrical and Electronic Equipment)

This marking on the product, accessories or literature indicates that the product and its electronic accessories (e.g. charger, headset, USB cable) should not be disposed of with other household waste at the end of their working life. To prevent possible harm to the environment or human health from uncontrolled waste disposal, please separate these items from other types of waste and recycle them responsibly to promote the sustainable reuse of material resources.

Household users should contact either the retailer where they purchased this product, or their local government office, for details of where and how they can take these items for environmentally safe recycling.

Business users should contact their supplier and check the terms and conditions of the purchase contract. This product and its electronic accessories should not be mixed with other commercial wastes for disposal.

## Innovation, Science and Economic Development Canada

This Class B digital apparatus meets all requirements of the Canadian Interference-Causing Equipment Regulations.

ICES-003 Compliance Label

CAN ICES-3 (B)/NMB-3(B)

## Triman



*Séparez les éléments avant de trier*



Points de collecte sur [www.quefairedemesdechets.fr](http://www.quefairedemesdechets.fr)  
Privilégiez la réparation ou le don de votre appareil !

The French Decree No. 2014-1577 has made it mandatory from 1 January 2015 to print the Triman Logo on recyclable products and packaging sold to consumers in France.