

TC5X SERIES CONFIGURATION & ACCESSORIES GUIDE



TC5X Series Accessory Ecosystem

4-Slot Spare Battery Charger
SAC-TC51-4SCHG-01



Soft Holster
SG-TC51-HLSTR1-01



Rugged Boot with Hand Strap
SG-TC5X-EXO1-01



ShareCradle System
1-slot charge (CRD-TC51-1SCU-01)
5-Slot Charge Only (CRD-TC51-5SC4B-01)



Attachable Trigger Handle
TRG-TC51-SNP1-03



USB Charge Cable
CBL-TC51-USB1-01



HealthCare Carrying Clip
SG-TC51-CLIPHC1-01



Vehicle Communication Cradle
CRD-TC56-UVCD1-01



Bluetooth Headset
HS3100-OTH



Also Supports...

Hand straps

Wall Bracket Mounts

Cig Lighter Adapter

Arm Mount

Stylus & Screen Protectors

Audio Adapters and More

*Item not available in all countries.



New Electronic Attachable Trigger Handle for TC52x & TC57x

For TC52x and TC57x Only

New electronic trigger handle

TRG-TC5X-ELEC1-01

(TC52x,TC57x only)

Electrical Snap-On Trigger Handle. Requires TC5X rugged boot (sold separately). Wrist Tether and rugged boot sold separately.



* Trigger Handle accessory is not intended for use with the TC5X-HC Healthcare products.

Trigger Handle Service Plan

The TC5X mechanical trigger handle accessory provides users with significant flexibility as they adapt the TC5X device to different operations within their retail environment. The TC5X trigger handle accessory is considered a consumable item which may need to be replaced during the life of a TC5X device. Therefore, Zebra highly recommends the purchase of a Zebra trigger handle service plan.

*For dedicated high-intensity scanning operations, customers are urged to consider Zebra mobile devices with integrated gun handles such as the MC33 and TC8000.

Call your local representative for more information

3-Year Zebra OneCare Comprehensive Trigger Maintenance

Call your local representative for more information

5-Year Zebra OneCare Comprehensive Trigger Maintenance

Single slot cradle with 2nd spare battery charging slot kit

CRD-TC5X2SETH-02

- Able to charge one TC5X mobile computer and one TC5X spare battery – simultaneously
- Ideal for customers that only need one or two devices per location (convenience stores, grab and go stores)
- Charge time from 0% to 90%: 2.5 hours (est.)
- Able to charge TC5X with Rugged Boot Installed
- Able to charge TC5X with Trigger Handle Installed
- Compatible with TC51, TC52, TC56 and TC57 devices
- Any TC5X battery can be charged in the spare battery slot
- Equipped with both USB 2.0 and Ethernet connectors for communication (Capable of 100/10 Mbps)
- Includes Power Supply and DC Cable – *AC Country Specific Cable Must be ordered separately*

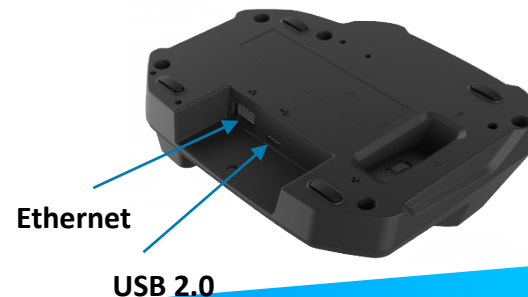
CRD-TC5X-2SETH-02

KIT, 1 SLOT AND 1 SPARE BATTERY ETHERNET & USB COMMUNICATIONS CRADLE FOR TC5X TERMINALS, INCLUDES POWER SUPPLY PWR-BGA12V50W0WW, DC CABLE CBL-DC-388A1-01, (NEED TO ORDER COUNTRY SPECIFIC AC LINE CORD)

New charge cradle



Part Number: **CRD-TC5X2SETH-02**



Device and spare battery are not included in Cradle product



New Zebra Fiber tipped Stylus

SG-STYLUS-TCX-MTL-03

Stainless steel and brass, no plastic parts, works in rain and snow.
Real pen feeling with a smooth glide!



SG-STYLUS-TCX-MTL-03

Passive Stylus, Micro-Knit Hybrid
Fiber Tip Stylus, 3 Pack

- Black Passive Stylus with Zebra Logo
- 5.0" Long
- Made from stainless steel and brass, no plastic parts, real pen feeling, heavy duty
- Micro-Knit Hybrid Mesh Fiber Tip – Silent and Smooth
 - Big improvement over rubber tipped or plastic tipped stylus
- Comes in a 3 Pack
- Compatible with all TC5 devices
- Compatible with all capacitive touch screen devices

New metal stylus cradle



Spare Li-ion Battery

BTRY-TC51-43MA1-01

PowerPrecision+ Spare Lithium Ion battery, 4.4v. Advanced new battery technology, provides a higher level of intelligence (State of Charge and State of Health) to deliver maximum performance (Single Pack).



BTRY-TC51-43HC1-01

TC51 Healthcare PowerPrecision+ Spare Lithium Ion battery, 4.4v.



Also available as a 10-pack
 PN: BTRY-TC51-43MA1-10
 PN: BTRY-TC51-43HC1-10

Charging LED indicators

Off	Battery not charging
Solid Amber	Healthy battery charging
Solid Green	Healthy battery charging complete
Fast Blink Red	Charging error
Solid Red	Unhealthy battery charging or fully charged

Spare Battery Charging Options

SAC-TC51-4SCHG-01

TC5X 4-slot battery charger, charges four spare batteries. Includes: Power Supply PWR-BGA12V50W0WW and DC cable CBL-DC-388A1-01. Country specific AC line cord, Rack/Wall bracket sold separately.

SAC-TC51-HC4SC-01

TC51 Healthcare white 4-slot battery charger. Includes Power Supply and DC cable.



Included Power Supply and DC Cable for Battery Charger:

Power supply for 4-slot battery charger:
 100-240 VAC, 12VDC, 4.16A.
 (PN: PWR-BGA12V50W0WW)



DC cable for Level 6 power supply
 PWR-BGA12V50W0WW
 12 VDC, 4.16A, 1.8 M length.
 (PN: CBL-DC-388A1-01)

Requires: Country specific AC grounded line cord.



US AC Line Cord



23844-00-00R

US AC line cord, 7.5 feet long, grounded, three wire for power supplies.



Charging Options

Single Slot ShareCradle



ShareCradle, Charge & USB Communication

CRD-TC51-1SCU-01: TC5X Single Slot Charge/USB ShareCradle Kit. Charges and allows USB communication to one device. Includes PWR-BGA12V50W0WW and DC cable CBL-DC-388A1-01. Country Specific AC Line Cord and 25-124330-01R Micro-USB Cable, Sold Separately.

CRD-TC51-HC1SC-01: TC51 Healthcare Single Slot Charge/USB ShareCradle Kit. Charges and allows USB communication to one device. Includes PWR-BGA12V50W0WW and DC cable CBL-DC-388A1-01. Country Specific AC Line Cord and 25-124330-01R Micro-USB Cable, Sold Separately.

KT-TC51-ETH1-01: USB-Ethernet Adapter kit for single slot ShareCradle. Includes Ethernet module (MOD-MT2-EU1-01) to provide Ethernet communication (10/100 Mbps) and a housing bracket to secure the Ethernet module to cradle.

Included with Single-Slot cradle



Power supply for single-slot cradle:
100-240 VAC, 12VDC, 4.16A.
(PN: PWR-BGA12V50W0WW)
Requires: Country specific AC grounded line cord.



DC cable for power supply
PWR-BGA12V50W0WW
12 VDC, 4.16A, 1.8m length
(PN: CBL-DC-388A1-01)

Additional accessories for Single-Slot cradle



23844-00-00R

US AC line cord, 7.5 feet long, grounded, three wire for power supplies.



25-124330-01R

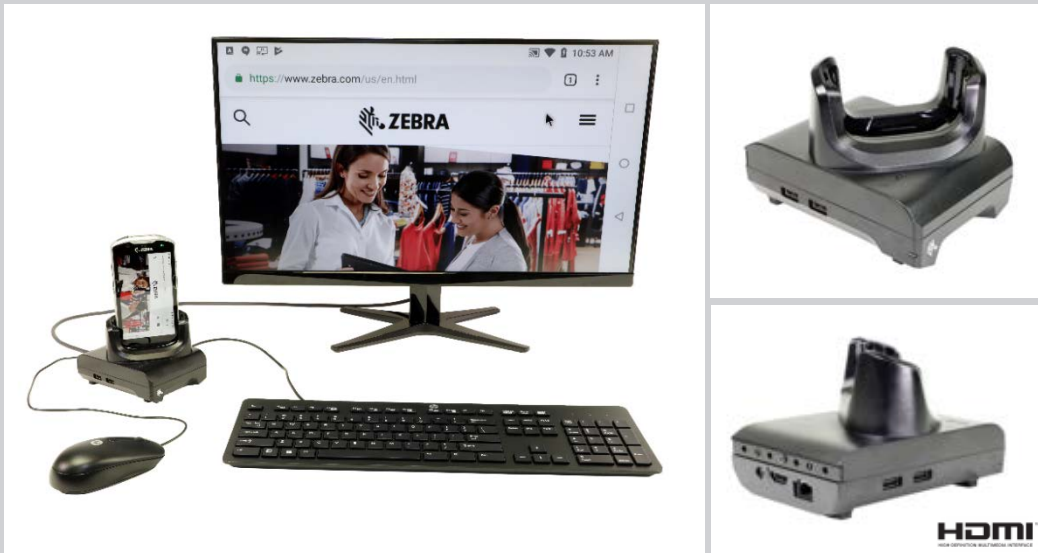
Micro-USB to USB Cable for single slot cradle communication.

Notes:

1. All TC5X cradles accommodate devices with or without the rugged boot.
2. Each cradle cup has an insert that must be removed prior to inserting the TC5X device with Rugged Boot attached.
3. Spare cradle cups are available as service spare parts.

ZEBRA Workstation Docking Cradle

Workstation Docking Cradle



The TC5X Workstation Docking Cradle is an enhanced single-slot charging cradle with additional ports for HDMI, Ethernet, and 4 USB ports for Keyboard, Mouse, and spares, that enables a TC5X device to be used as a workstation computer when connected to an HDMI monitor, keyboard and mouse. The Workstation Docking Cradle supports all TC5X Mobile Computers including the TC51, TC56, TC52 and TC57. It also includes a Kensington port to secure the cradle to a desk location or, alternatively, the cradle can be locked down to a desktop, shelf or rack with screw-down options.

CRD-TC5X-1SWS-01: TC5X Workstation Docking Cradle Kit with Std Cup, HDMI, Ethernet and multiple USB Ports. Kit includes Cradle (CRD-TC5X-1SWS1-01), power supply (i.e. PWR-BGA12V50W0WW) and DC cable (i.e. CBL-DC-388A1-01). Country specific AC line cord sold separately.

*Note: Software updates may be required to support functionality including the Displaylink™ Presenter driver available on the Google Play™ store, and the appropriate Zebra BSP or LG updates.

Included with Workstation Cradle Kit



Power supply for single-slot cradle: 100-240 VAC, 12VDC, 4.16A.
(PN: PWR-BGA12V50W0WW)
Requires: Country specific AC grounded line cord (not included).



DC cable for power supply
PWR-BGA12V50W0WW.
(12 VDC, 4.16A) 1.8m length.
(PN: CBL-DC-388A1-01)

Additional accessories



23844-00-00R

US AC line cord, 7.5 feet long, grounded, three wire for power supplies.

Notes:

1. All TC5X cradles accommodate devices with or without the rugged boot.
2. Each cradle cup has an insert that must be removed prior to inserting the TC5X device with Rugged Boot attached.
3. Spare cradle cups are available as service spare parts.
4. This cradle does not include a micro-USB port.

Included with 5-Slot ShareCradle



Front



Back



Power supply for 5-slot cradle: 100-240 VAC, 12VDC, 9A. (PN: PWR-BGA12V108W0WW)

Requires: Country specific AC grounded line cord (sold separately).

DC cable provides power from the power supply to 5-slot charge-only and Ethernet cradles.

(PN: CBL-DC-381A1-01)

Country specific AC line cord sold separately



23844-00-00R

US AC line cord, 7.5 feet long, grounded, three wire for power supplies.

Notes:

1. All TC5X cradles accommodate devices with or without the rugged boot.
2. Each cradle cup has an insert that must be removed prior to inserting the TC5X device with Rugged Boot attached.
3. Spare cradle cups are available as service spare parts.

5-Slot ShareCradle



CRD-TC51-5SC4BC-01

CRD-TC51-5SC4B-01: TC5X 5-Slot Charge Only ShareCradle with 4-Slot Spare Battery Charger, charges up to 4 devices and up to 4 spare batteries. Includes power supply PWR-BGA12V108W0WW and DC cable CBL-DC-381A1-01.

CRD-TC51-5SCHG-01: TC5X 5-Slot Charge Only ShareCradle, charges up to five devices. Includes power supply PWR-BGA12V108W0WW and DC cable CBL-DC-381A1-01.

CRD-TC51-5SETH-01: TC5X 5-Slot Ethernet ShareCradle, charges up to five devices and provides Ethernet communication. Includes power supply PWR-BGA12V108W0WW and DC cable CBL-DC-381A1-01.

CRD-TC51-HC5SC-01: TC5X Healthcare White 5-Slot Charge Only ShareCradle, charges up to five devices. Includes power supply PWR-BGA12V108W0WW and DC cable CBL-DC-381A1-01.



Charging Options

Mount Options for Multi-Slot Cradles



MAXIMUM DENSITY

RACK MOUNTED SOLUTION:

The Rack/Wall Mount Bracket has been optimized to work on a standard 19-inch IT rack. The brackets can also be configured in different angles for maximum flexibility.

Compatible with all multi-slot cradle options:

CRD-TC51-5SC4B-01: 4-Slot Charge Only ShareCradle with 4-Slot Spare Battery Charger, charges up to 4 devices and up to 4 spare batteries on the same cradle. (Includes Power supply and DC cable)

CRD-TC51-5SCHG-01: 5-Slot Charge Only ShareCradle, charges up to five devices. (Includes Power supply and DC cable)

CRD-TC51-5SETH-01: 5-Slot Ethernet ShareCradle, charges up to five devices and provides Ethernet communication. (Includes Power supply and DC cable)

CRD-TC51-HC5SC-01: TC51 Healthcare White 5-Slot Charge Only ShareCradle, charges up to five devices. (Includes Power supply and DC cable)

Rack/Wall Bracket for Multi-Slot ShareCradle



BRKT-SCRD-SMRK-01

Rack/Wall mounting bracket is designed to help customers install any Single-Slot or Multi-Slot ShareCradle on a wall or a 19" IT rack. The bracket also enables the installation of up to four 4-Slot Spare Battery Chargers together on a wall or standard 19" IT rack.

Dual 4-slot Battery Charging Solution

CBL-DC-523A1-01

DC "Y" Cable for running two **SAC-TC51-4SCHG-01** battery chargers with a single Level VI power supply **PWR-BGA12V108W0WW**

PWR-BGA12V108W0WW

Power supply for multi-slot cradle: 100-240 VAC, 12VDC, 9A. **Requires:** Country specific AC grounded line cord.



* 2 DC Cables and 2 Power supplies are required to utilize solution shown.

Arm Mount

For Retail Use Only

SG-TC51-WMADP1-01 & SG-TC51-WMADP1-02

TC5X arm mount with adjustable strap. Enables hands-free scanning when paired via Bluetooth with Zebra cordless ring scanners. Rotatable to either portrait or landscape mode. Can be used with or without the rugged boot. Strap lengths: -01 sku is 191 mm; -02 sku is 265 mm.



Rugged Boot

SG-TC5X-EXO1-01

TC5X Rugged Boot and Hand strap. Provides additional protection to the device and allows user to attach a trigger handle. (Not recommended for healthcare devices)





Attachable Trigger Handle

For TC51, TC52, TC56, TC57 Only Mechanical Attachable Trigger Handle



KT-TC51-TRG1-01

For TC51, TC52, TC56, TC57 only
Mechanical Snap-On Trigger Handle and Rugged Boot Kit. Trigger handle easily attaches to the rugged boot and is easily removable to access the battery. Trigger handle includes a tether point for a wrist tether. Wrist Tether (SG-PD40-WLD1-01) is sold separately.

This is not to be used on the TC52x or the TC57x



TRG-TC51-SNP1-03

TC51, TC52, TC56, TC57 only
Mechanical Snap-On Trigger Handle. Requires TC5X rugged boot (sold separately or included in above kit KT-TC51-TRG1-01). Wrist Tether and rugged boot sold separately.

This is not to be used on the TC52x or the TC57x
For TC52X or TC57X, please the new electronic trigger TRG-TC5X-ELEC1-01.

* Trigger Handle accessory is not intended for use with the TC51-HC Healthcare, TC52X TC57X products. For TC52X or TC57X, please the new electronic trigger TRG-TC5X-ELEC1-01.

Trigger Handle Service Plan

The TC5X mechanical trigger handle accessory provides users with significant flexibility as they adapt the TC5X device to different operations within their retail environment. The TC5X trigger handle accessory is considered a consumable item which may need to be replaced during the life of a TC5X device. Therefore, Zebra highly recommends the purchase of a Zebra trigger handle service plan.

* For dedicated high-intensity scanning operations, customers are urged to consider Zebra mobile devices with integrated gun handles such as the MC33 and TC8000.

OPT-TRGMNT-3	3-Year Zebra OneCare Comprehensive Trigger Maintenance
OPT-TRGMNT-5	5-Year Zebra OneCare Comprehensive Trigger Maintenance

Hand Strap



SG-TC51-EHDSTP1-03

TC5X Replacement Hand strap for devices configured with a rugged boot (3-pack).

SG-TC51-BHDSTP1-03

TC5X Basic Hand strap kit. Allows TC5X devices without a rugged boot to be configured with a hand strap (3-pack). For use with TC5X WLAN configurations only.



Soft Holster

SG-TC51-HLSTR1-01

TC5X soft holster for vertical orientation with open bucket design for easy insertion and removal. Features adjustable straps to accommodate handstrap, rugged boot and trigger handle configurations.



Stylus & Screen Protector



SG-TC7X-STYLUS-03

Stylus with coiled tether 3-pack. Made of conductive carbon-filled plastic material, optimized for enterprise durability.

KT-TC51-SCRNP1-01

TC5X Tempered Glass Screen Protector 3-pack.



TC5X-HC Carrying Clip

SG-TC51-CLIPHC1-01

TC5X Healthcare Carrying Clip. Snaps on top of TC5X-HC. Built with disinfectant-ready, healthcare grade plastic.



Rugged Charge Cable

CBL-TC51-USB1-01

TC5X Rugged USB/Charge Cable. Accommodates TC5X with and without rugged boot.



Vehicle & Wall Charger – Power Supply

PWR-WUA5V12W0XX

Power Supply-100-240 VAC, 5 V, 2.5 A with country specific plugs.



CHG-AUTO-USB1-01



CIGARETTE TO USB ADAPTER
Charges the TC5X and a printer via the vehicle lighter power adapter.

Country	Power Supply Part Number
United States	PWR-WUA5V12W0US
Great Britain	PWR-WUA5V12W0GB
Europe	PWR-WUA5V12W0EU
Australia	PWR-WUA5V12W0AU
China	PWR-WUA5V12W0CN
Brazil	PWR-WUA5V12W0BR
Korea	PWR-WUA5V12W0KR
India	PWR-WUA5V12W0IN

USB Adapter

ADPTR-TC56-USBC-01

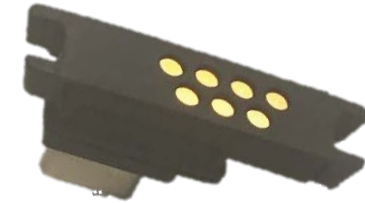
Provides charging and communications. Snaps on to bottom of TC5X device. Can be used with any consumer grade USB-C cable. Plugs into any standard wall adapter or USB port. USB-C cable sold separately



Spare I/O Connector

ADP-TC51-RGIO1-03

Spare/replacement TC5X 7-pin I/O connector. 3-pack



Audio Cables Adapters

CBL-TC51-HDST25-01

2.5MM Female to 3.5MM Male Headset Adapter Cable.



CBL-TC51-HDST35-01

3.5MM Collared Female to 3.5MM Male Headset Adapter Cable.



Rugged Headset

HS2100-OTH

HS2100 Rugged Wired Headset Over-The-Head Headband includes HS2100 Boom Module and HSX100 OTH Headband Module



Headset

HDST-35MM-PTVP-01

Over the ear headset with mic and PTT button. Requires 3.5MM adapter cable CBL-TC51-HDST35-01 (sold separately).



Bluetooth Headset

HS3100-OTH

HS3100 Rugged Bluetooth Headset Over-The-Head Headband includes HS3100 Boom Module and HSX100 OTH Headband Module



Charge Only “Drop-In Style” Vehicle Cradle

CRD-TC56-CVCD2-02

TC56 Charge-Only Drop-In Vehicle Cradle
Mounting hardware and power cable sold separately



- **USB Power Cable: CBL-TC5X-USBC2A-01**
- Boot #SG-TC51-EXO1-01) is required for proper fit and protection

Ram Suction Cup Mount

RAM-B-166U

RAM Twist Lock Suction Cup with Double Socket Arm and Diamond Base Adapter; Overall Length: 6.75". Compatible with both charge and communications vehicle cradles.



This is a light duty quick and easy, one handed, top drop in style cradle that locks in place. It uses a USB-C to type cable to connect to the back of the cradle. The cradle can be powered through either a Cigarette Lighter Adapter (CLA), or connect directly to a vehicle USB powered port.



CBL-TC5X-USBC2A-01



CHG-AUTO-USB1-01

ProClip Charge Only “Drop-In Style” Vehicle Cradle

3PTY-PCLIP-241389

TC56 Charge-Only Drop-In Vehicle Cradle
Mounting hardware sold separately



- Cigarette Lighter Adapter (CLA) cable included
- Boot #SG-TC51-EXO1-01) must be ordered separately for proper fit and protection

Ram Suction Cup Mount

RAM-B-166U

RAM Twist Lock Suction Cup with Double
Socket Arm and Diamond Base Adapter;
Overall Length: 6.75". Compatible with both
charge and communications vehicle cradles.



This is a light duty quick and easy, one handed, top drop in style cradle that is designed to be used in vertical (portrait) position, not recommended in landscape mode.



ProClip Communication Enabled Vehicle Cradle



CRD-TC56-UVCD1-01

- TC56 Communication Enabled Vehicle Cradle
- Power supplies sold separately (hardwire and CLA)
- Zebra USB Hub Sold separately – **SHARE-USBH-01**
- **Boot #SG-TC51-EXO1-01) is required for proper fit and protection**

USB IO Hub (15 pin D Connector) provides USB Charge & Communication



Zebra CLA Power Supply Cable

CHG-AUTO-CLA1-01

12/24V

CLA (Cigarette Light Adapter) Auto Charge Cable for the vehicle cradle. Does **not** work without Cradle (sold separately).



Zebra Hardwire Auto Charge Cable

CHG-AUTO-HWIRE1-01

12/24V

Hardwire Auto Charge Cable for the vehicle cradle. Allows for installation into Vehicle's fuse box. Does **not** work without Cradle (sold separately).





Country Specific AC Line Cord Options

Country	Three Wire AC Line Cord
Abu Dhabi	50-16000-220R: 1.8M long, CEE 7/7 plug.
Australia	50-16000-217R: 1.9M long, AS 3112 plug.
Bolivia	50-16000-220R: 1.8M long, CEE 7/7 plug.
Brazil	50-16000-727R: 18AWG, 250V, 16A, BR (3w).
China	50-16000-217R: 1.9M long, AS 3112 plug. 50-16000-257R: 1.8M long, IEC 60320 C13 plug.
Dubai	50-16000-220R: 1.8M long, CEE 7/7 plug.
Egypt	50-16000-220R: 1.8M long, CEE 7/7 plug.
Europe	50-16000-220R: 1.8M long, CEE 7/7 plug.
Hong Kong	50-16000-219R: 1.8M long, BS1363 plug.
India	50-16000-669R: 1.9M long, BS 546 plug.
Iran	50-16000-220R: 1.8M long, CEE 7/7 plug.
Iraq	50-16000-219R: 1.8M long, BS1363 plug.

Country	Three Wire AC Line Cord
Israel	50-16000-672R: 1.9M long, S132 plug.
Italy	50-16000-671R: 1.8M long, CIE 23-16 plug.
Japan	50-16000-218R: 1.8M long, NEMA 1-15P plug.
Korea	50-16000-220R: 1.8M long, CEE 7/7 plug. 50-16000-256R: 1.8M long, CEE7/7 plug.
Malaysia	50-16000-219R: 1.8M long, BS1363 plug.
New Guinea	50-16000-217R: 1.9M long, AS 3112 plug.
Russia	50-16000-220R: 1.8M long, CEE 7/7 plug.
Singapore	50-16000-219R: 1.8M long, BS1363 plug.
UK	50-16000-219R: 1.8M long, BS1363 plug.
US	23844-00-00R: 7.5 feet long. 50-16000-221R: 1.8M long, USA NEMA 5-15P.
Vietnam	50-16000-220R: 1.8M long, CEE 7/7 plug.