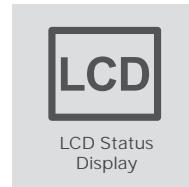
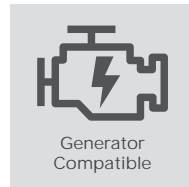
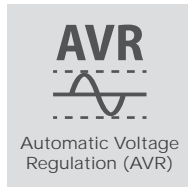
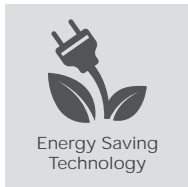
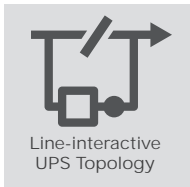


VP700E(I)LCD/VP1000E(I)LCD  
VP1200E(I)LCD/VP1600E(I)LCD



### TOWER UPS WITH LCD DISPLAY FOR PROFESSIONAL USAGES



### The GreenPower UPS providing reliable battery backup and data line protection with high-speed transmission for home and office

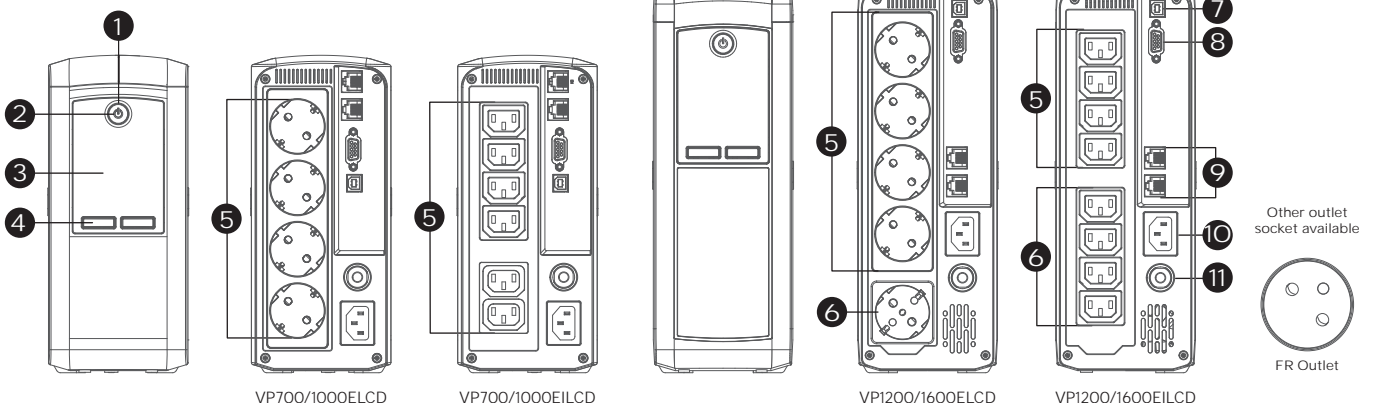
Ideal for home, office and back office applications, the Value Pro Series adopts line-interactive topology with Automatic Voltage Regulation (AVR) function to offer stabilized AC power output. The products provide multifunctional LCD readout to display clear power and battery conditions. The data line protection with high-speed transmission safeguards phones, network and communication equipment against surges/spikes as well as supply 1Gbps speed to transmit data. The products' power management software achieves real-time monitoring and configuration.

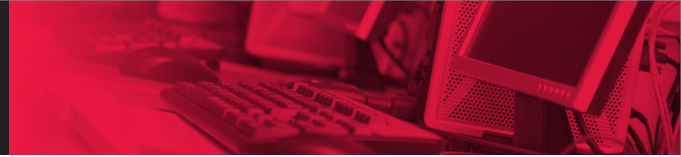
#### SERIES FEATURES

- Line-interactive UPS Topology
- Energy Saving Technology
- Generator Compatible
- Simulated Sine Wave Output
- Automatic Voltage Regulation (AVR)
- LCD Status Display
- High-Speed Ethernet Data Transmission
- USB Connectivity Port
- Surge and Spike Protection
- Serial Connectivity Port
- PowerPanel Management Software

#### PRODUCT CALLOUTS

- 1 . Power On Indicator
- 2 . Power On/Off Switch
- 3 . LCD Display Panel
- 4 . Function Button(s)
- 5 . Battery Backup & Surge Protected Outlets
- 6 . Surge Protected Outlet(s)
- 7 . USB Port
- 8 . Serial Port
- 9 . Communication Protection Ports RJ11/RJ45
- 10 . AC Inlet
- 11 . Input Circuit Breaker





## TECHNICAL SPECIFICATIONS

Model Name	VP700E(I)LCD	VP1000E(I)LCD	VP1200E(I)LCD	VP1600E(I)LCD
<b>General</b>				
UPS Topology	Line-interactive			
Energy Saving Technology	GreenPower UPS™ Bypass Technology			
<b>Input</b>				
Nominal Input Voltage (Vac)	230 ± 10%			
Input Voltage Range (Vac)	167 - 295			
Input Frequency (Hz)	50 ± 5, 60 ± 5			
Rated Input Current (A)	3.04	4.35	5.2	6.96
Input Connector Type	IEC C14			
<b>Output</b>				
Capacity (VA)	700	1000	1200	1600
Capacity (Watts)	390	550	720	960
On Battery Waveform	Simulated Sine Wave			
On Battery Voltage(s) (Vac)	230 ± 10%			
On Battery Frequency (Hz)	50 ± 1%, 60 ± 1%			
Automatic Voltage Regulation (AVR)	Single Boost, Single Buck			
Overload Protection	Circuit Breaker			
Outlet(s) - Total	4 [Schuko/FR] or 6 [IEC]		5 [Schuko/FR] or 8 [IEC]	
Outlet Type	Schuko x 4 or FR x 4 or IEC C13 x 6		Schuko x 5 or FR x 5 or IEC C13 x 8	
Outlet(s) - Battery & Surge Protected	4 [Schuko/FR] or 6 [IEC]		4 [Schuko/FR] or 4 [IEC]	
Outlet(s) - Surge-Only Protected	-		1 [Schuko/FR] or 4 [IEC]	
Typical Transfer Time (ms)	4			
<b>Battery</b>				
Runtime at Half Load (min)	10	9	12	11
Runtime at Full Load (min)	1		4	2
Typical Recharge Time (Hours)	8			
User-replaceable	Yes - Qualified Personnel Only			
Battery Type	Sealed Lead-acid			
<b>Surge Protection &amp; Filtering</b>				
Surge Suppression (Joules)	450			
EMI/RFI Filtration	Yes			
Phone/Network Protection RJ11/RJ45 (Combo)	1-in, 1-out			
<b>Management &amp; Communications</b>				
LCD Panel	Yes			
LED Indicators	Power On			
HID Compliant USB Port(s)	1			
Serial Port	RS232			
Audible Alarms	Battery Mode, Low Battery, Overload, UPS Fault			
Power Management Software	PowerPanel Personal (Recommended)			
<b>Physical</b>				
Form Factor	Tower			
<b>Physical Size - UPS Module</b>				
Dimensions (WxHxD) (mm.)	100 x 227 x 260		100 x 281 x 355	
Weight (kg.)	5.14	6.23	9.62	10.42
<b>Environmental</b>				
Operating Temperature (°C)	0 - 40			
Operating Relative Humidity (Non-condensing) (%)	0 - 90			
Online Thermal Dissipation (BTU/hr)	9.5	23.9	74	68
<b>Certifications</b>				
Certifications*	CE, EAC			
RoHS	Yes			

\*Certifications may vary according to different regions. Visit [www.cyberpower.com](http://www.cyberpower.com) for more information.  
#All specifications are subject to change without notice.