

QUICK GUIDE 2-IN-1 ATTACHABLE KEYBOARD, TAB ACTIVE PRO



A. FEATURES

1. Top Latch Ridge
2. Cover
3. Hinge
4. Pogo Pins
5. Rubber Keys
6. Touchpad
7. Mouse Buttons
8. Built-in Kickstand
9. USB-C Power Port
10. USB 2.0 Input Port
11. Part Number Label



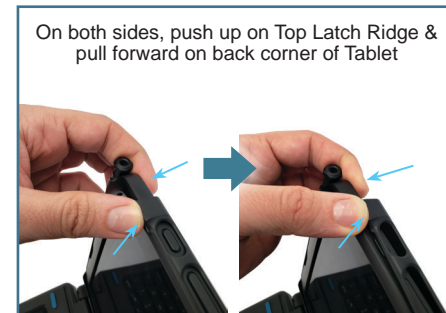
B. IMPORTANT INFORMATION

- Compatible with the Samsung Tab Active Pro only
- Temperature Range:
 - Operating -20°C to 60°C
 - Storage -40°C to 85°C
- IP54, FCC, CE, RoHS, REACH, C-Tick compliant
- This product is NOT designed to be vehicle mounted.
- Connect power cable to USB-C Power Port (Feature 9)
- Connect a flash drive or other digital data device to the USB 2.0 port on the side of the keyboard (Feature 10)
- Reference the Part Number Label for product information regarding any service needs (Feature 11)

C. HOW TO DOCK & UNDOCK THE TABLET



TO DOCK



TO REMOVE

Thank you for choosing Gamber-Johnson for your keyboard needs. To learn more visit gamberjohnson.com and search part number 7160-1450.