

B R Y D G E

10.5 Series II

USER MANUAL



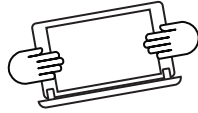
Designed For iPad Pro 10.5

# B R Y D G E 10.5 Series II

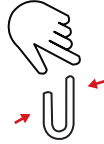
## 1 INSERT/REMOVE



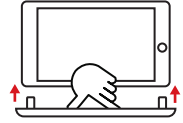
Place your Brydge on a flat surface, rotate the hinges upright to 90° and insert your iPad into the hinges with the home button on the right



Lift your iPad to test the hinge grip. Your iPad and Brydge should be held firmly together



If the iPad is loose, remove and give the hinges a gentle squeeze. Repeat this process until your iPad is held firmly



To remove, hold your iPad and pull straight up, with one hand firmly holding your Brydge against a hard surface

## 2 POWER



To manually power on, press and hold the power key; the light will turn green for 3 seconds to indicate power

NOTE: Once paired, your Brydge will automatically wake upon opening. The power key will turn green for three seconds to let you know your Brydge is awake



To manually power off, press and hold the power key for 3 seconds; the light will turn red momentarily to indicate it's powered off

NOTE: To conserve battery, your Brydge will enter sleep mode after 20 minutes of non-use. Press any key to turn back on. Your Brydge will enter sleep mode when both devices are closed like a laptop

## 3 PAIR



Once the keyboard is on, press and hold the Bluetooth™ key for 3 seconds. The power key will flash blue until the keyboard is successfully paired



On your iPad, under Settings > Bluetooth select Brydge 10.5



The light on the power key will shut off to let you know the Brydge has paired and the iPad Settings will say connected

## 4 CHARGE

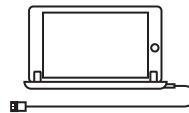


To check battery life, press and hold the battery key for four seconds. Power key will flash three times:

Green = 75-100%  
Yellow = 25-74%  
Red = 10-24%



When battery is 9% or lower, backlit keys will be disabled and light will flash continuously



To charge your Brydge insert the supplied Micro USB cable into the charging port on the front right corner

NOTE: Charging can take up to 3 hours



The battery is charging when the light on the power key is red; your Brydge is fully charged when the light turns off

Once done charging you can remove the cable (battery should last 12 months or more based on use)

## 5 KEYBOARD SHORTCUTS

### Undo

Command + Z

### Copy

Command + C

### Underline

Command + U

### Show Dock

Command + Option + D

### Home Screen

Command + H

### Cut

Command + X

### Paste

Command + V

### Italic

Command + I

### Switch App

Command + Tab

### Search

Command + Space

### Switch Language

ctrl + shift + Spacebar

(Spacebar allows you to toggle through available languages)

## ON-SCREEN KEYBOARD

Easily toggle between your Brydge and on-screen keyboard

## SCREEN BRIGHTNESS

Adjust screen brightness up and down

## BACKLIT KEYS

Adjust the brightness of your keyboard

## QUICK LOCK

Lock your iPad with a single touch

## HOME & CONTROL CENTER

- Press once for home screen
- Press twice for control center

## PLAYER CONTROLS

Rewind, Play/Pause, and Fast Forward

## VOLUME

Adjust volume up, down, or mute

## BATTERY

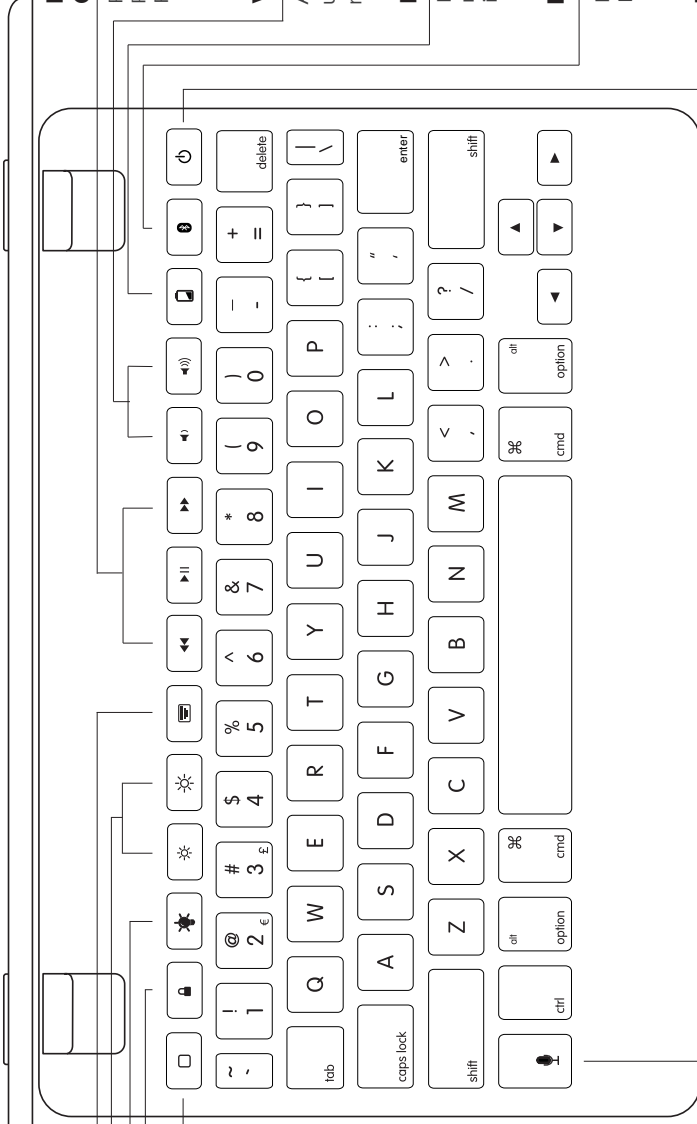
Press to see how much battery life is left

## BLUETOOTH

Press to pair your Brydge and iPad

## POWER

Turn your Brydge on or off



## SIRI

Dedicated Siri button

**Have a question? Contact Brydge directly at  
[support@brydge.com](mailto:support@brydge.com)**

Find more information at  
[www.brydge.com](http://www.brydge.com)