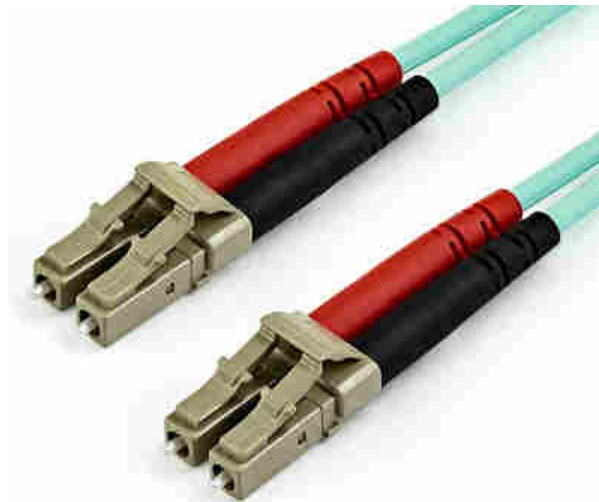


10m (30ft) LC/UPC to LC/UPC OM4 Multimode Fiber Optic Cable, 50/125m LOMMF/VCSEL Zipcord Fiber, 100G Networks, Low Insertion Loss, LSZH Fiber Patch Cord

Product ID: 450FBLCLC10



This LC to LC Multimode Duplex Fiber Optic Patch cable offers reliable connections for 40GBase-SR4, 100GBase-SR10, SFP+ and QSFP+ transceivers in your 40 and 100 Gigabit networks.

With laser-optimized multimode fiber (LOMMF), the patch cable is ideal for 850 nm and 1350 nm Vertical Cavity Surface Emitting Laser (VCSEL) and LED sources. The high-speed connectivity on the aqua fiber-optic cable provides a high-bandwidth solution for your data centers or high-density applications.

This fiber-optic patch cord is backward compatible with your existing 50/125 equipment, ensuring a reliable connection with legacy LANs.

Housed in a LSZH (Low-Smoke, Zero-Halogen) flame retardant jacket, this fiber-optic cable ensures minimal smoke, toxicity and corrosion when exposed to high sources of heat, or in the event of a fire. It's the best choice for a wide range of environments, including industrial settings, central offices and schools, as well as residential settings where building codes are a consideration.

Each OM4 fiber cable is also individually tested and certified to be within acceptable optical insertion loss limits for guaranteed compatibility and 100% reliability.

450FBLCLC10 is backed by a StarTech.com lifetime warranty and free lifetime technical support.

Certifications, Reports and Compatibility



Applications

- Use in 40/100 Gigabit Ethernet and fiber-channel applications
- High-speed connectivity for high-density applications

Features

- **OM4 FIBER CABLE:** OM4 Laser-Optimized Multimode Fiber Cable delivers up to 100 Gbps Ethernet; Full-duplex zip-cord with color-coded TX/RX connectors for cabling servers and Storage Area Networks (SANs)
- **QUALITY CONSTRUCTION:** 50/125m fiber core/cladding is immune to EMI; Protective Aramid fiber sheath for improved tensile strength and crush resistance; LC/LC connectors with UPC polished ceramic ferrules for insertion loss below 0.3dB
- **RATINGS AND RELIABILITY:** Individually tested for signal integrity; LSZH jacket emits low-smoke and fumes if combusted; Attenuation value under 2.3dB/km meets or exceeds industry standards
- **COMPATIBILITY:** OM4 LC/LC multimode cable supports 1/10/40/100 Gbps for high-density network applications such as SANs, data servers, SFP+ and QSFP+ connections over 1000BASE-SX, 10GBASE-SR, 40GBASE-SR4, and 100GBASE-SR10
- **SPECS:** 10m (33ft); Color: Aqua (OM4); LC/LC UPC; 850nm or 1300nm LED/VCSEL; Modal Bandwidth: 2000MHz·km at 850nm; Cable OD: 2.9mm; Bend Radius: Static 1.2in (3cm), Dynamic 2.4in (6cm); Backed for Life

Hardware

Warranty	Lifetime
Fire Rating	LSZH Rated (Low Smoke Zero Halogen)
Fiber Size	50/125

Performance

Maximum Data Transfer Rate	100Gbps
Cable Rating	1Gbps / 10Gbps / 40Gbps / 100Gbps
Fiber Classification	OM4
Type	Multi Mode
Wavelength	850nm

Connector(s)

Connector A	1 - Fiber Optic LC Duplex
Connector B	1 - Fiber Optic LC Duplex

Environmental

Operating Temperature	-20C to 60C (-4F to 140F)
Storage Temperature	-20C to 60C (-4F to 140F)
Humidity	0~90% RH

Physical Characteristics

Color	Aqua
Cable Length	32.8 ft [10 m]
Product Length	32.8 ft [10.0 m]
Product Width	0.0 in [0.0 mm]
Product Height	0.0 in [0.0 mm]
Weight of Product	4.6 oz [131.0 g]

Packaging Information

Package Quantity	1
Package Length	7.9 in [20.0 cm]
Package Width	8.7 in [22.0 cm]
Package Height	0.9 in [2.2 cm]
Shipping (Package) Weight	5.0 oz [142.0 g]

What's in the Box

Included in Package	1 - 10 m Fiber Optic Cable
---------------------	----------------------------

**Product appearance and specifications are subject to change without notice.*