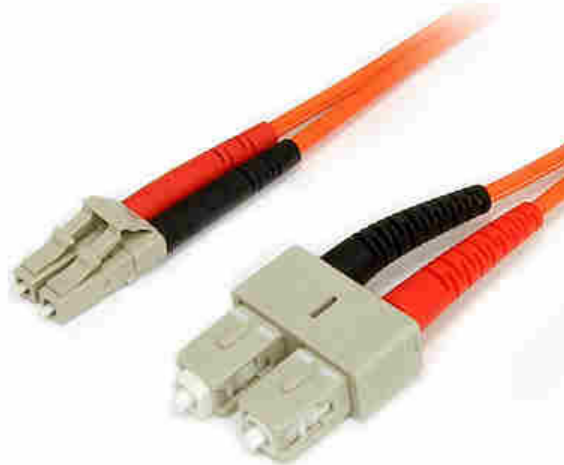


Fiber Optic Cable - Multimode Duplex 62.5/125 - LSZH - LC/SC - 2 m

**Product ID:** FIBLCSC2



The FIBLCSC2 2-meter (6.6ft) Multimode 62.5/125 Duplex Fiber Patch Cable is terminated with one LC (male) connector and one SC (male) connector, to provide the necessary connection between fiber networking devices for high-speed, long distance networks.

This LC-SC patch cable is housed in a LSZH (Low-Smoke, Zero-Halogen) flame retardant jacket, to ensure minimal smoke, toxicity and corrosion when exposed to high sources of heat, in the event of a fire. Making it ideal for use in industrial settings, central offices and schools, as well as residential settings where building codes are a consideration.

To ensure optimum performance, our multimode fiber duplex cable is individually tested and certified to be within acceptable optical insertion loss limits for guaranteed compatibility and 100% reliability.

Backed by Lifetime Warranty, our LC-SC Multimode Fiber Patch cable is guaranteed to provide long-lasting dependability, and top quality performance.

## Certifications, Reports and Compatibility



## Applications

- Ideal solution for data applications requiring high speed data transmission
- Broadband systems
- Telecommunication/Data communication

- Used by long distance networks with mission critical data

## Features

- Attenuation loss meets or exceeds industry standards
- LSZH (Low-Smoke, Zero-Halogen) cable jacket
- Immune to electrical interference

---

### Hardware

Warranty	Lifetime
Fire Rating	LSZH Rated (Low Smoke Zero Halogen)
Fiber Size	62.5/125

---

### Performance

Maximum Data Transfer Rate	10Gbps
Cable Rating	1Gbps / 10Gbps
Fiber Classification	OM1
Type	Multi Mode

---

### Connector(s)

Connector A	1 - Fiber Optic LC Duplex
Connector B	1 - Fiber Optic SC Duplex

---

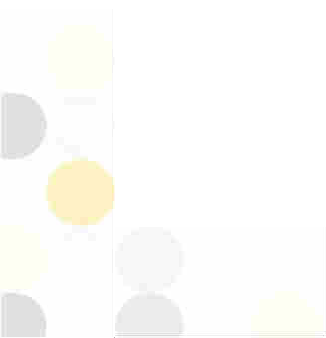
### Environmental

Operating Temperature	-20C to 60C (-4F to 140F)
Storage Temperature	-20C to 60C (-4F to 140F)
Humidity	0~90% RH

---

### Physical Characteristics

Color	Orange
Cable Length	6.6 ft [2 m]
Product Length	6.6 ft [2.0 m]



Product Width	0.5 in [1.2 cm]
Product Height	0.3 in [6.8 mm]
Weight of Product	1.4 oz [39.0 g]

---

**Packaging Information**

Package Length	8.7 in [22.0 cm]
Package Width	7.9 in [20.0 cm]
Package Height	1.1 in [2.7 cm]
Shipping (Package) Weight	1.7 oz [48.0 g]

---

**What's in the Box**

Included in Package	1 - 2m Multimode 62.5/125 Duplex Fiber Patch Cable LC - SC
---------------------	--

---

***\*Product appearance and specifications are subject to change without notice.***

