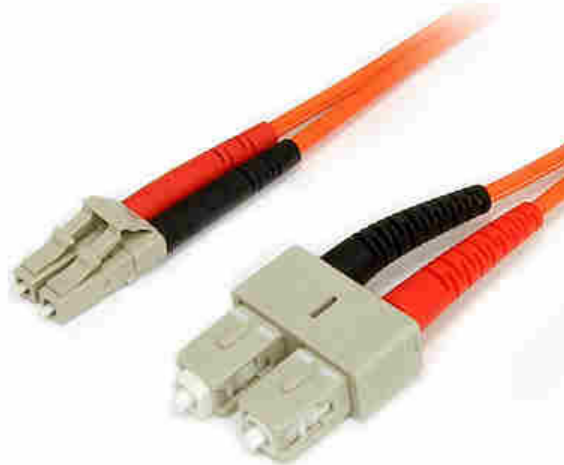


Fiber Optic Cable - Multimode Duplex 62.5/125 - LSZH - LC/SC - 1 m

Product ID: FIBLCSC1



The FIBLCSC1 1-meter (3.2ft) Multimode 62.5/125 Duplex Fiber Patch Cable is terminated with one LC (male) connector and one SC (male) connector, to provide the necessary connection between fiber networking devices for high-speed, long distance networks.

This LC-SC patch cable is housed in a LSZH (Low-Smoke, Zero-Halogen) flame retardant jacket, to ensure minimal smoke, toxicity and corrosion when exposed to high sources of heat, in the event of a fire. Making it ideal for use in industrial settings, central offices and schools, as well as residential settings where building codes are a consideration.

To ensure optimum performance, our multimode fiber duplex cable is individually tested and certified to be within acceptable optical insertion loss limits for guaranteed compatibility and 100% reliability.

Backed by Lifetime Warranty, our LC-SC Multimode Fiber Patch cable is guaranteed to provide long-lasting dependability, and top quality performance.

Certifications, Reports and Compatibility



Applications

- Ideal solution for data applications requiring high speed data transmission
- Broadband systems
- Telecommunication/Data communication

- Used by long distance networks with mission critical data

Features

- Attenuation loss meets or exceeds industry standards
- LSZH (Low-Smoke, Zero-Halogen) cable jacket
- Immune to electrical interference

Hardware

Warranty	Lifetime
Fire Rating	LSZH Rated (Low Smoke Zero Halogen)
Fiber Size	62.5/125

Performance

Maximum Data Transfer Rate	10Gbps
Cable Rating	1Gbps / 10Gbps
Fiber Classification	OM1
Type	Multi Mode

Connector(s)

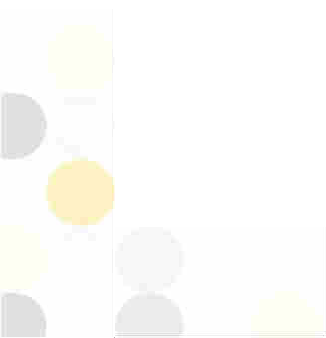
Connector A	1 - Fiber Optic LC Duplex
Connector B	1 - Fiber Optic SC Duplex

Environmental

Operating Temperature	-20C to 60C (-4F to 140F)
Storage Temperature	-20C to 60C (-4F to 140F)
Humidity	0~90% RH

Physical Characteristics

Color	Orange
Cable Length	3.3 ft [1 m]
Product Length	3.3 ft [1.0 m]



Product Width	0.0 in [0.0 mm]
Product Height	0.0 in [0.0 mm]
Weight of Product	0.9 oz [26.0 g]

Packaging Information

Package Length	8.7 in [22.0 cm]
Package Width	7.9 in [20.0 cm]
Package Height	1.0 in [2.6 cm]
Shipping (Package) Weight	1.2 oz [35.0 g]

What's in the Box

Included in Package	1 - 1m Multimode 62.5/125 Duplex Fiber Patch Cable LC - SC
---------------------	--

****Product appearance and specifications are subject to change without notice.***

