



## MEMOR™ 1 - THE NEW DATALOGIC GENERAL PURPOSE FULL TOUCH DEVICE

Memor 1 is your business companion for any data capture application, from assisted sales to the shop floor, or back-end receiving to the warehouse.

### MULTIPLE DEVICES IN ONE

The Memor 1 device comes with a powerful Qualcomm Snapdragon platform and features Android™ 8.1 (Oreo) with GMS. This device is available in two form factors: a hand held version resembling a rugged smartphone or a pistol-grip version with a comfortable trigger. The robust black enclosure allows this device to be used in most any application.



### WIRELESS CHARGING DOCKS – SINGLE AND 3-SLOT

The Memor 1 device is charged using state-of-the-art wireless charging technology that eliminates the need for cleaning contacts on the device and docks. It radically reduces support costs and increases its reliability.

The 3-slot dock along with multiple single dock options support both hand held and pistol-grip models providing maximum flexibility.

### BOOST AND FAST CHARGING

The Memor 1 device requires less than 2 hours to fully charge the battery and the Boost Recharge allows use within minutes of charging. Six charging profiles are available to let the user decide which profile better suits their needs.

### VOICE COMMUNICATOR

The Memor 1 device can also be used as a phone or PTT device using the Voice over Internet Protocol (VoIP), leveraging your Wi-Fi network for communications.

NOTE: The Android robot is reproduced or modified from work created and shared by Google and used according to terms described in the Creative Commons 3.0 Attribution License.



#### FEATURES

- Multi-purpose device: hand held or pistol-grip
- Android 8.1 (Oreo) with Google Mobile Services (GMS)
- Wireless charging eliminates all contacts on the device and dock
- Supports both Boost and Fast charging modes
- VoIP or PTT phone capabilities over Wi-Fi
- Presentation mode allows hands-free scanning
- Datalogic's SoftSpot™ technology for innovative triggering through the touch display
- 3-Axis Accelerometer auto-rotates the screen orientation
- 4.3 inch capacitive multi-touch FWVGA display with Gorilla® Glass 3
- Vibration alert for notifications
- Advanced 2D imaging technology with image capture
- Datalogic's patented 'Green Spot' technology for visual good-read feedback
- EASEOFCARE Service Plans offer a wide range of service options to protect your investment, ensuring maximum productivity and ROI

#### INDUSTRY-APPLICATIONS

- Retail:
  - Inventory
  - Access Control
  - Gift Registry
  - Shop Floor Applications
  - Assisted Sales
- Manufacturing:
  - Quality Control
  - Inventory
- Logistics:
  - Inventory
  - Picking/Packing
  - Shipping/Receiving
  - Track & Trace

## TECHNICAL SPECIFICATIONS

### WIRELESS COMMUNICATIONS

LOCAL AREA NETWORK (WLAN)	IEEE 802.11 a/b/g/n; Wi-Fi Security Standards: WEP, WPA/WPA2 PSK, 802.1x EAP Methods: PEAP/MSCHAPV2, PEAP/GTC, TLS, TTLS/PAP, TTLS/MSCHAP, TTLS/ MSCHAPV2, TTLS/GTC, PWD
PERSONAL AREA NETWORK (WPAN)	Bluetooth® wireless technology v4.0 - Dual Mode, supporting Classic Bluetooth and BLE
NFC COMMUNICATION	NFC communication between device and dock

### DECODING CAPABILITY

1D / LINEAR CODES	Auto discriminates all standard 1D codes including GS1 DataBar™ linear codes.
2D CODES	Aztec Code, Data Matrix, MaxiCode, PDF417, MicroPDF417, Micro QR Code, QR Code
POSTAL CODES	Australian Post, Japanese Post, KIX Code, Royal Mail, USPS Intelligent Mail, USPS PLANET, USPS POSTNET
DIGITAL WATERMARKS	Supports Digimarc® Barcode (optional)

### ELECTRICAL

BATTERY	Replaceable battery pack with rechargeable Li-Ion batteries; 3.7 V; 3,000 mAh (12 Watt-hours)
WIRELESS CHARGING	Two charging options: Fast charging or Standard charging

### ENVIRONMENTAL

DROP RESISTANCE	Withstands repeated drops from 1.2 m / 4.0 ft onto plywood over concrete and 1.5 m / 5.0 ft onto plywood over concrete with the rubber boot accessory
TEMPERATURE	Operating: -10 to 50 °C / 14 to 122 °F

### INTERFACES

INTERFACES	USB 2.0 Client (with standard Micro-USB connector) SDXC card slot (not user accessible)
------------	---

### SENSORS

ACCELEROMETER	3-Axis accelerometer to detect orientation
GYROSCOPE	Senses angular velocity
VIBRATION	Software programmable
MAGNETOMETER	Senses angular velocity

### PHYSICAL CHARACTERISTICS

DISPLAY	4.3 inch full touch TFT-LCD color display; FWVGA: 854 x 480 pixels; 16M colors, LED backlight
TOUCH SCREEN PHYSICAL KEYS	Capacitive, multi-touch, Gorilla® Glass 3 <b>Handheld:</b> Home/scan fully programmable key <b>Pistol-Grip:</b> Home/scan fully programmable key, Scan Trigger key
LED/LIGHTING	Software programmable, lights at the bottom of the battery cover
DIMENSIONS	<b>Handheld:</b> 14.5 x 7.7 x 3.4 cm / 5.7 x 3.0 x 1.3 in <b>Pistol-Grip:</b> 14.5 x 7.7 x 11.6 cm / 5.7 x 3.0 x 4.5 in
WEIGHT (WITH BATTERY)	<b>Handheld:</b> 275.0 g / 9.7 oz <b>Pistol-Grip:</b> 305.0 g / 10.7 oz

### READING PERFORMANCE

DEPTH OF FIELD	4.3 to 35.0 cm / 1.7 to 13.8 in, depending on bar code density
MINIMUM RESOLUTION	Linear codes at 4 mils; 2D codes at 5 mils
READING INDICATORS	Loudspeaker (Polyphonic); Datalogic's patented 'Green Spot' technology for visual good-read feedback

### SAFETY & REGULATORY

AGENCY APPROVALS	The product meets necessary safety and regulatory approvals for its intended use.
ENVIRONMENTAL COMPLIANCE	Complies to EU RoHS

### SOFTWARE

APPLICATIONS	Datalogic's SoftSpot technology for configurable soft triggers; Supports Datalogic's Queue Busting app; Pre-licensed device and browser lockdown powered by 42Gears; Enterprise class PTT offered by Zello
PROVISIONING CONFIGURATION AND MAINTENANCE	Android Zero Touch enrollment Datalogic DXU for device configuration and firmware upgrade from PC
DEVELOPMENT MDM	Java and Xamarin SDK available SOTI MobiControl, VMWare AirWatch, Wavelink Avalanche, 42Gears SureMDM
TERMINAL EMULATION	StayLinked SmartTE, Wavelink Velocity

### SYSTEM

MEMORY	System RAM: 2 GB; System Flash: 16 GB Flash Disk SD Card: Factory installed option
CPU OPERATING SYSTEM	Qualcomm Snapdragon Quadcore 1 GHz Android 8.1 (Oreo) with GMS

### WARRANTY

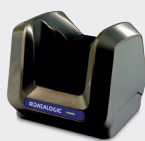
WARRANTY	1-Year Factory Warranty
----------	-------------------------

## ACCESSORIES

### Docks and Holders



• 94ACC0206 3-Slot  
Dock



• 94ACC0207 Single  
Slot Dock Locking



• 94ACC0208 Single Slot  
Dock Charge only

### Cases/Holders



• 94ACC0209 Handheld  
Rubber Boot



• 94ACC0210 Pistol Grip  
Rubber Boot



• 91ACC0080  
Belt Holster