



**USB 3.0 Dual
Display Docking Station**
Quick Installation Guide

Installing the Driver

CAUTION: DO NOT connect the docking Station to a computer before installing the provided driver.

- * *The following strings and screenshots may vary slightly from each operating system.*
- * *Windows® 7 must be upgraded to SP1 or later.*

Windows® OS

1. Please download the driver for your device: originstorage.com/origin-drivers.
2. Click **Run Setup.exe** to execute the installer program. Wait for the program to install the drivers.
3. Click **Finish** to complete the installation.

NOTE:

- a. If the **AutoPlay** does not start automatically, locate and double-click on the **Setup.exe** file in the driver folder to launch the setup.
- b. Enter the administrator password and click **Yes**, if a **User Account Control** dialog box is prompted.
- c. For some Windows Operating Systems, the driver will automatically be installed. If you need to install the driver manually, follow the instructions above.

Mac OS®

1. Please download the driver for your device: originstorage.com/origin-drivers.
2. If the **License agreement** is prompted, click **Continue** to start the driver installation.
3. Click **Restart** to finish installing the software.

Making the Connection

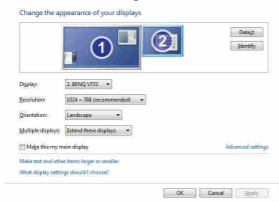
1. Connect the Docking Station to a DVI monitor (*Dual Display Docking Station to a HDMI or/and DVI monitor*) and a computer. The screen may temporarily go black or flash during this process.
2. Connect the USB peripherals, such as Ethernet, speaker and microphone to the corresponding connectors.

Multi-monitor Configuration

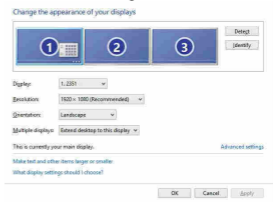
An extra DVI monitor can be connected through the Docking Station (HDMI and DVI monitors for Dual Display Docking Station) if one monitor is already connected to the PC directly. Once the extra monitor is connected, it can be configured to use either **“Mirror mode”**, **“Extended mode”** or be the **Primary** display.

Position the mouse anywhere on the **Windows Desktop**, right-click and select **Display Settings** on Windows[®] 10, **Screen Resolution** on Windows[®] 7/ Windows[®] 8/ Windows[®] 8.1, **Personalize > Display Settings** on Windows[®] Vista or **Properties > Settings** on Windows[®] XP.

Single Display Docking Station



Dual Display Docking Station



Alternatively, click utility icon  in the **Windows System Tray**, and then select **DisplayLink Manager** or **Video Setup**.

Incorporates HDMI[®] technology.

This Quick Installation Guide describes only the basic instructions on installation. For more information, please refer to the **User's Manual** on the provided CD-ROM.

USB 3.0 Dual Display Docking Station
Quick Installation Guide



V1.1