



# SOCKETSCAN® S740

## Ergonomic and Elegant

The SocketScan S740 2D/1D imager barcode scanner with Bluetooth wireless technology scans either 1D or 2D barcodes on paper or screen. It has a lightweight, ergonomic structure, and a long-lasting battery to withstand entire work days. The lights for battery, Bluetooth and scanning notifications make the scanner more intuitive to use. Compatible with all applications in previous Socket Mobile barcode scanners, without software changes. This scanner is ideal for retail POS, field service, inventory management, asset tracking and more. Use our Companion App for easy set up and configuration.



Certified by Apple® for iOS devices (iPad®, iPhone®, iPod Touch®) and compatible with Android and Windows®.

## Features

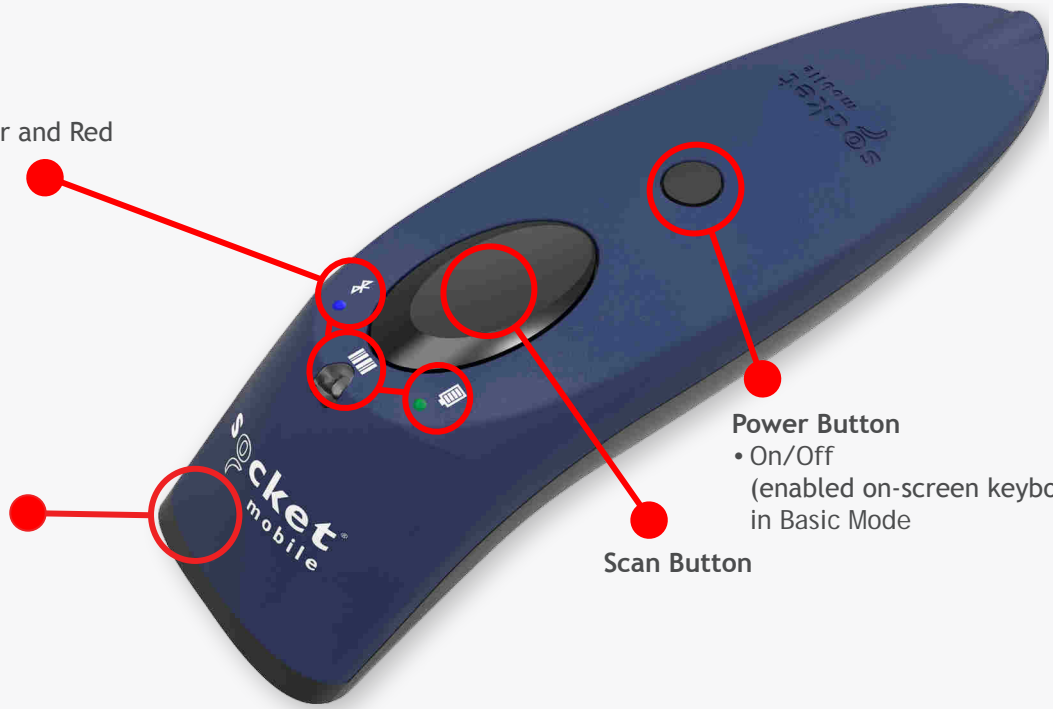
- **Bluetooth Wireless Technology** - Connects easily to a wide range of Bluetooth enabled smartphones, tablets, notebook and desktop computers
- **Certified by Apple® for iOS devices** - Guaranteed Compatibility - With our SDK integrated in over 700+ applications, Socket Mobile scanners are one of the most natively integrated scanners available today. Socket Mobile Scanners are also 100% compatible with any application out-of-the-box in HID (keyboard emulation) mode.
- **Compatible with all Android and Windows devices and applications**
- **Scanning** - Fast 2D, 1D and omni-directional ability, allowing intuitively rapid barcode scanning with highly visible and safe LED aimer
- **Auto Scan Mode** - Presentation Mode (automatic scanning) provides continuous scanning capabilities without pressing the scan button
- **LED Aimer** - Bright, rectangular illumination field with LED dot for precise aiming
- **Exceptional Ergonomics** - Small, lightweight, and fits perfectly in the hand for comfortable use over extended periods
- **User Indicators** - Intuitive LEDs, Bluetooth connection, battery level and scanning status
- **User Feedback** - Audible tones and hand pulsation
- **Long-Lasting Battery** - Power to last over 16 hours
- **Replaceable Battery** - 2 AA NiMH rechargeable batteries
- **Protective Material** - Made with antimicrobial material for protection against potentially harmful bacteria
- **Color Options** - Blue, green, red, white and yellow colors enable corporate-branding personalization and is easy to find in busy work environments
- **Application Integration** - Socket Mobile's Capture SDK enables easy integration in your applications to improve business productivity with fast, efficient and reliable data transfer over Bluetooth wireless technology
- **Wearable** - Includes wrist strap. Holster, lanyard and retractable clip available (sold separately)
- **Designed and Assembled in the USA**
- **Developer Support Available**
- **1-Year Warranty**



**Intuitive LED Indicators**

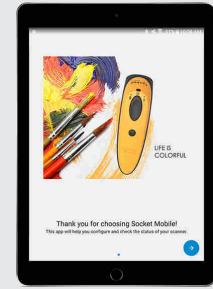
- Battery LED: Green, Amber and Red
- Bluetooth LED: Blue
- Scan LED: Green and Red

**Weight/Mass**  
• 4.1 oz. (117 g)



- Power Button**
  - On/Off (enabled on-screen keyboard) in Basic Mode
- Scan Button**

- (1) SocketScan S740, 2D/1D Barcode Imager
- (1) Charging Cable
- (1) Wrist Strap
- (1) Get Started Insert



Socket Mobile Companion  
Download for Free!

The S740 is available in 5 colors:



- Blue (SKU# CX3431-1881)
- Green (SKU# CX3417-1836)
- Red (SKU# CX3413-1832)
- Yellow (SKU# CX3415-1834)
- White (SKU# CX3419-1838)

## OPTIONAL ACCESSORIES

Charging Stand  
SKU# AC4076-1538



Great for using AutoScan Mode

Charging Dock  
SKU# AC4133-1871



Ideal as a desktop charger

Durable Retractable Clip  
AC4130-1828



Provides quick access to scanner  
Scanner & Phone Holder

Holster  
AC4131-1829



Safe and accessible placement

Lanyard - Black  
AC4100-1692



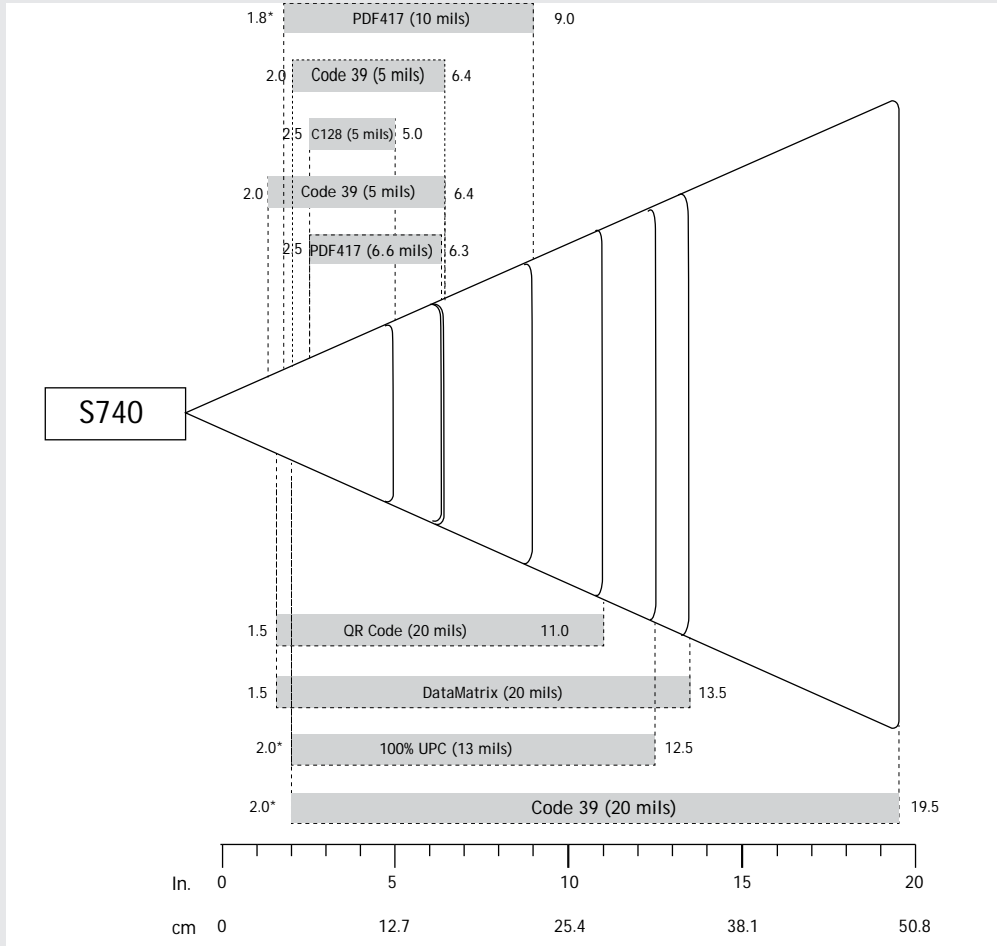
Great for hanging around your neck



Nice one-handed option

Default Barcode Symbologies:	<b>1D Symbologies:</b> Australia Post, Codabar, Code 39, Code 93, Code 128, EAN-13/JAN, EAN-8/JAN, GS1 Databar, GS1 Databar Expanded, GS1 Databar Limited, GS1-128, Interleaved 2 of 5, ISBT 128, UPC A, UPC EO <b>2D Symbologies:</b> Aztec, Data Matrix, Maxicode, Micro PDF417, PDF417
Supported Barcode Symbologies:	<b>1D Symbologies:</b> Australia Post, Bookland EAN, Chinese 2 of 5, Codabar, Code 11, Code 39, Code 93, Code 128, Composite CC-A/B, Composite CC-C, Composite TLC, Discrete 2 of 5, EAN-13/JAN, EAN-8/JAN, GS1 Databar, GS1 Databar Expanded, GS1 Databar Limited, GS1-128, Interleaved 2 of 5, ISBT 128, ISSN EAN, Matrix 2 of 5, MSI, UPC/EAN/JAN, UPC A, UPC EO <b>2D Symbologies:</b> Aztec, Data Matrix, Maxicode, Micro PDF417, MicroQR, PDF417, QR Code
Scan Angle:	42° (Horizontal) - 28° (Vertical)
Sensor Resolution:	640 horizontal x 400 vertical pixels
Print Contrast:	Down to 25%

Reading Distance:



4.6 to 49.5 cm (1.5 to 19.5 in.) Depends on barcode size, symbology, label media, Narrow and Wide ratio, scan angle

### Decode Ranges

	Near	Far
5 mil Code 39	2.0 in/5.1 cm	6.4 in/16.2 cm
5 mil Code 128	2.5 in/6.3 cm	5.0 in/12.7 cm
6.6 mil PDF417	2.5 in/6.3 cm	6.3 in/16.0 cm
10 mil PDF417	1.8 in/4.5 cm*	9.0 in/22.8 cm
13 mil 100% UPC	2.0 in/5.0 cm*	12.5 in/31.7 cm
20 mil Code 29	2.0 in/5.0 cm*	19.5 in/49.5 cm
20 mil Data Matrix	1.5 in/3.8 cm	13.5 in/34.3 cm
20 mil QR Code	1.5 in/3.8 cm	11.0 in/27.9 cm

Scanner:	Standard one year limited warranty
Accessories:	90 days
Extended Warranty: (sold separately)	<a href="http://www.socketmobile.com/socketcare">www.socketmobile.com/socketcare</a>



## BATTERY

Battery:	2 rechargeable, 2000 mAh (LR6) NiMH (replaceable battery)
Charge Time:	~6 Hours
Battery Life - Per Full Charge:	Standby time: over 20 hours Active Scan Time: 70,000 scans within 9 hours based on 2 scans every 1 second 17,000 scans within 19 hours based on 1 scan every 4 seconds
Note:	Battery life varies depending on ambient temperature, ambient light and age of battery.

BLUETOOTH (WIRELESS CONNECTION) 

Bluetooth Radio:	Class 2 Bluetooth, version 2.1 + EDR (Enhanced Data Rates) with 56-bit data encryption
Bluetooth Range:	Up to 10 m (33 ft.) depending on environment, range limit is usually due to the Host Device (phone, tablet or notebook)
Bluetooth Profiles:	Basic Mode - Human Interface Device (HID)*, Application Mode - Serial Port Profile (SPP) and Application Mode - MFi-SPP. Some Operating Systems or smartphone/tablet models may support only one profile. <i>*By default, the scanner is set to Basic Mode (HID).</i>

## SCANNER TYPE

Technology:	2D/1D Barcode Linear Imager
Light Source:	Hyper Red 660 nm (nanometer) LED
Aimer:	610 nm LED

## USER ENVIRONMENT

Ambient Light:	From 0 to 100 000 lux. From pitch black to direct sun light
Operating Temperature:	0° to 45° C (32° to 113° F)
Storage Temperature:	-40° to 70° C (-40° to 158° F)
Relative Humidity:	95% at 60° C (140° F) (non-condensing)
Drop Specifications:	4 ft. drop to linoleum

## OPERATING SYSTEM COMPATIBILITY

Android OS - Basic Mode (HID)* & Application Mode (SPP)	Mac OS - Basic Mode (HID)* only
Apple iOS - Basic Mode (HID)* & Application Mode (MFi-SPP)	Windows OS - 10, 8, and 7 - Basic Mode (HID)* & Application Mode (SPP)

Compatible with devices supporting Basic Mode (HID)\* protocol

*Supported keyboard Languages - English, French, German and Spanish*


*\*By default the scanner is in Basic Mode (HID). No software installation required.*

Certified by Apple® for iOS devices (iPad®, iPhone®, iPod Touch®) and compatible with Android and Windows®.



Retail/Point of Sale	Mobile Tracking	Transportation	Hospitality
Office use	Shipping & Receiving	Gaming	
Healthcare	Field Sales/Service	Banking	

## CERTIFICATION &amp; REGULATORY

Bluetooth SIG:	Declaration ID: D030473 QD ID: 82009
Electrical Safety:	Certified to IEC 60950-1, UL 60950-1, CAN/CSA C22.2
Environmental:	Environmental: RoHS EN 50581
EMI / RFI:	FCC Part 15 Class C, RSS 210, iCES 003, C-Tick, CISPR 22, CE EN55022, EN55024, TELEC FCC ID: T9J-RN42 IC ID: 6514-RN42 Telec:  201-125799
LED Safety:	IEC/EN 62471 (EXEMPT GROUP)



SRRC



socketmobile.com

Toll-Free: +1 800 552 3300 (USA/Canada)

France: +33 970 462 241

Latin America: +1 510 933 3153

sales@socketmobile.com

Asia Pacific: +1 510 933 3122

Germany: +49 9401 5299 052

Switzerland: +41 62 834 07 80

EMEA &amp; Russia: +41 62 834 0780

Japan: +8190 9808 0518

UK/Ireland/South Africa: +44 (0) 1252 761403  
+44 7787 112109