

Introduction: Thank you for deciding to purchase a be quiet! product. The following instructions will guide you through the installation process. If you do encounter installation problems, please don't hesitate to contact our customer services by mailing service@bequiet.com. Please note that be quiet! cannot accept liability for damage caused by compatibility problems.

Warranty:

- 3 years manufacturer guarantee for consumers (original purchase from authorized be quiet! dealers only)
- Guarantee work can only be processed with an included copy of the purchase receipt from an authorized be quiet! dealer
- Manipulation and structural changes of any kind as well as damages through external mechanical forces lead to a complete voiding of the guarantee
- Our General Warranty Conditions apply, which can be viewed on bequiet.com

Listan GmbH & Co.KG · Biedenkamp 3a · 21509 Glinde Germany

For further information contact us via e-mail: service@bequiet.com

SCOPE OF DELIVERY

	Part name	Quantity
①	be quiet! Dark Rock Pro 4 cooler	1
②	135mm fan	1
③	120mm fan	1
④	Intel backplate	1
⑤	Intel mounting brackets	2
⑥	Short AMD mounting brackets	2
⑦	Cooler mounting bridge	1
⑧	Intel spacer nuts	4
⑨	Intel 115X/1366 nuts	4

DARK ROCK PRO 4

! We recommend removal of the cooler prior to transportation.

January 2018

	Part name	Quantity
⑩	AMD spacer nuts	4
⑪	Mounting bracket fastening screws	4
⑫	Intel/AMD mounting bridge fastening screws	2
⑬	Intel backplate screws	4
⑭	AMD backplate screws	4
⑮	O-rings	4
⑯	Cross-tip screwdriver	1
⑰	Thermal paste	1
⑱	Fan clips	2
⑲	AM3 washers	4
⑳	Y cable	1

DARK ROCK PRO 4

be quiet!

Intel LGA 2011(-3) square ILM / LGA 2066



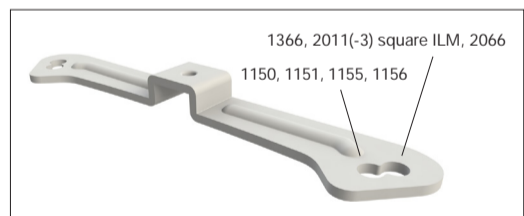
Installation video

General

We recommend preparatory mounting of the cooler outside the PC case for subsequent installation.

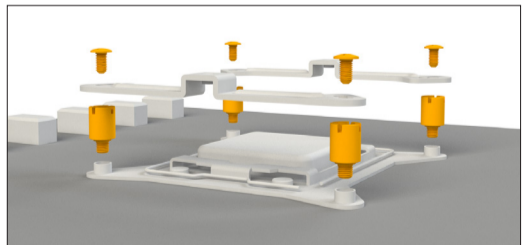
The following parts are needed for this:

1x Dark Rock Pro 4 CPU cooler (1), 1x 135mm fan (2), 1x 120mm fan (3), 2x Intel mounting brackets (5), 1x cooler mounting bridge (7), 4x Intel spacer nuts (8), 4x mounting bracket fastening screws (11), Intel/AMD mounting bridge fastening screws (12), 1x cross-tip screwdriver (16), 1x thermal paste (17), 4x fan clips (18), 1x Y cable (20)



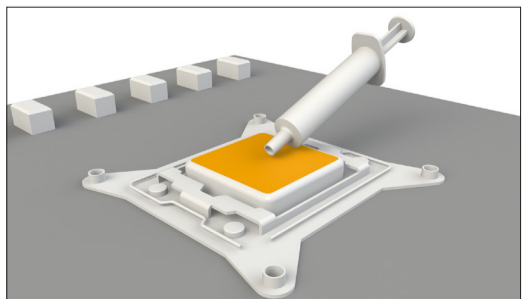
Assembly of the cooler mounting frame

First screw the Intel spacer nuts (8) onto the threads of the socket frame. Place the Intel mounting brackets (5) over the Intel spacer nuts and screw these tight with the mounting bracket fastening screws (11). You can use the cross-tip screwdriver (16) for this.

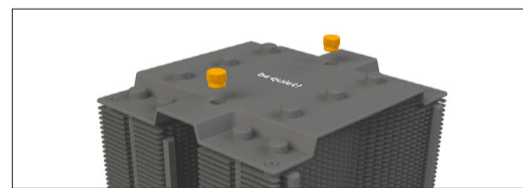


First remove the protective foil from the underside of the cooler. Spread the thermal paste (17) on the surface of the CPU. The amount supplied is sufficient for one or two applications.

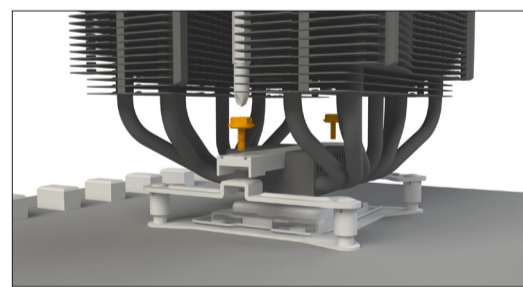
Caution: The thermal paste supplied is not suitable for human consumption. If swallowed, drink lots of water and urgently seek medical attention. Keep it out of the reach of children. Avoid contact with skin and eyes.



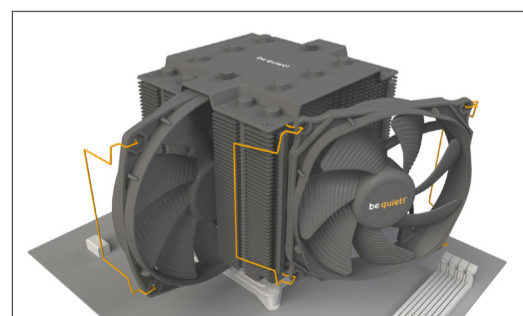
Position the cooler mounting bridge (7) centrally on the cooler (1). Next place the cooler unit over the CPU. Loosen both heatpipe caps that are found in the middle of the top side of the cooler (rotate as illustrated). Insert the Intel/AMD mounting bridge fastening screws (12) from above into the cooler mounting bridge (7) and then screw these alternately tight. You can use the cross-tip screwdriver (16) for this.



Subsequently retighten both heatpipe caps on the top side of the cooler.



Fasten the 120mm fan (3) using fan clips (18) onto the front side of the cooler. Slide the 135mm fan (2) between the two heatsinks and also fasten this with fan clips (18). Connect both fans using the the Y cable (20). Connect this to the CPU fan connector on the motherboard.



When dismantling the fans, push the notches of the fan clips (18) away from the fan.

Intel LGA 1150 / 1151 / 1155 / 1156 / 1366



Installation video

General

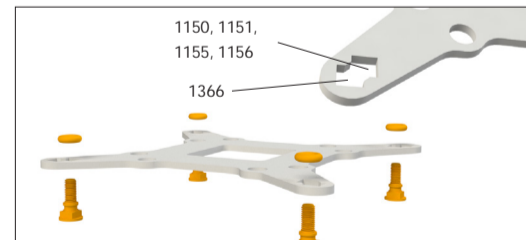
We recommend preparatory mounting of the cooler outside the PC case for subsequent installation.

The following parts are needed for this:

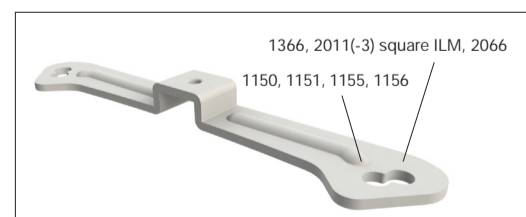
1x Dark Rock Pro 4 CPU cooler (1), 1x 135mm fan (2), 1x 120mm fan (3), 1x Intel backplate (4), 2x Intel mounting brackets (5), 1x cooler mounting bridge (7), 4x Intel 115X/1366 nuts (9), 4x mounting bracket fastening screws (11), 2x Intel/AMD mounting bridge fastening screws (12), 4x Intel backplate screws (13), 4x O-rings (15), 1x cross-tip screwdriver (16), 1x thermal paste (17), 4x fan clips (18), 1x Y cable (20)

Mounting the backplate

Position the Intel backplate screws (13) in the notches situated on the rear side of the Intel backplate (4). Pay attention in so doing to align with the holes specially drilled for each socket.

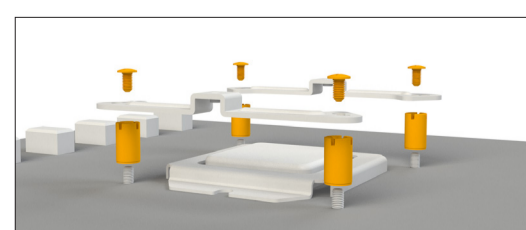


For fixing the backplate screws onto the Intel backplate use the O-rings (15). Once assembly of the Intel backplate for the respective Intel socket is complete, position it under the motherboard. In so doing make sure that the Intel backplate screws (13) are precisely positioned inside the motherboard holes.



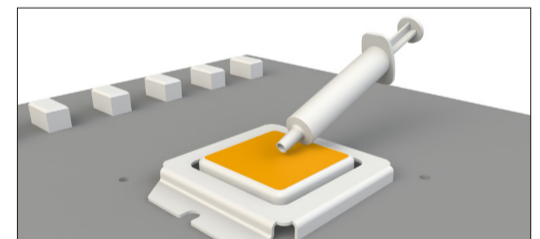
Assembly of the cooler mounting frame

Screw the Intel 115X/1366 nuts (9) onto the previously positioned Intel backplate (4). Then position the Intel mounting brackets (5) over the Intel 115X/1366 nuts and affix these with the mounting bracket fastening screws (11). You can use the cross-tip screwdriver for this (16).

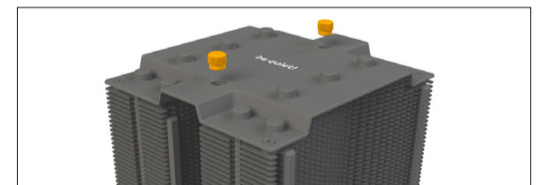


First remove the protective foil from the underside of the cooler. Spread the thermal paste (17) on the surface of the CPU. The amount supplied is sufficient for one or two applications.

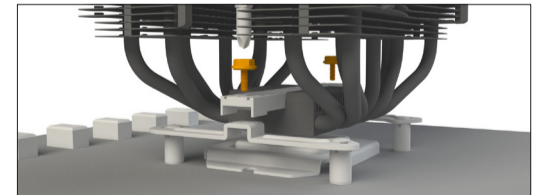
Caution: The thermal paste supplied is not suitable for human consumption. If swallowed, drink lots of water and urgently seek medical attention. Keep it out of the reach of children. Avoid contact with skin and eyes.



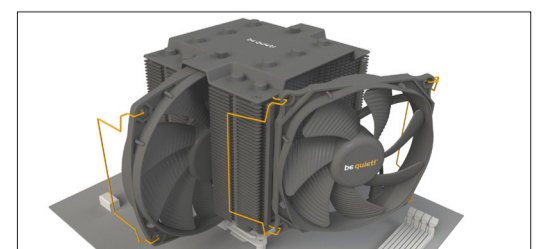
Position the cooler mounting bridge (7) centrally on the cooler. Next place the cooler unit over the CPU. Loosen both heatpipe caps that are found in the middle of the top side of the cooler. Insert the Intel/AMD mounting bridge fastening screws (12) from above into the cooler mounting bridge and then screw these alternately tight.



You can use the cross-tip screwdriver (16) for this. Subsequently retighten both heatpipe caps on the top side of the cooler.



Fasten the 120mm fan (3) using fan clips (18) onto the front side of the cooler. Slide the 135mm fan (2) between the two heatsinks and also fasten this with fan clips (18). Connect both fans using the the Y cable (20). Connect this to the CPU fan connector on the motherboard.



When dismantling the fans, push the notches of the fan clips (18) away from the fan.

