

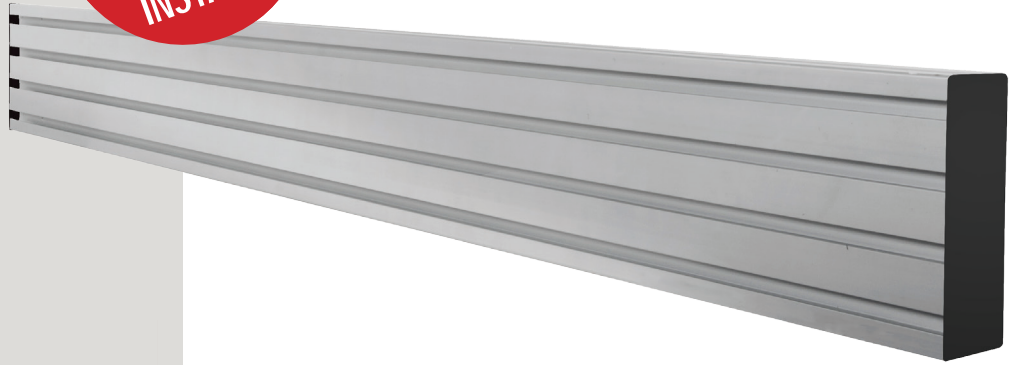


B-TECH AV MOUNTS™

JOIN RAILS
TOGETHER
FOR LONGER
INSTALLS

BT8390

SYSTEM X™ HORIZONTAL MOUNTING RAIL



B-TECH AUDIO VIDEO MOUNTS



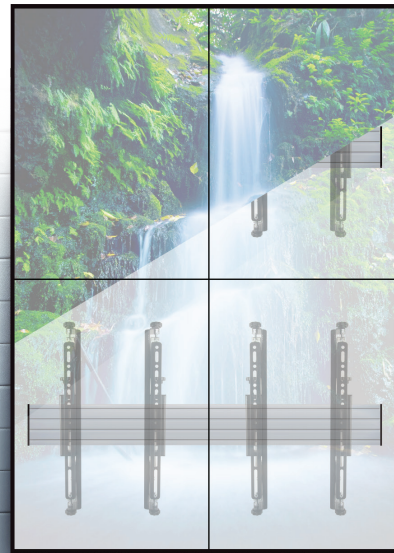
BT8390 horizontal mounting rails are the central component of any System X installation, whether it be for a complex multi-screen install or a single screen application. Made from aluminium, the rail itself is sturdy yet lightweight and is designed to support a variety of interface arms and mounts, allowing screens and other AV equipment to be fitted to the rail. Available in a range of lengths, the BT8390 can be mounted onto walls, poles or System X support columns using a range of different fixing kits (available separately). Rails can be cut to shorter lengths as required or joined together using extension kits (also available separately) for much longer installs.

SPECIFICATION

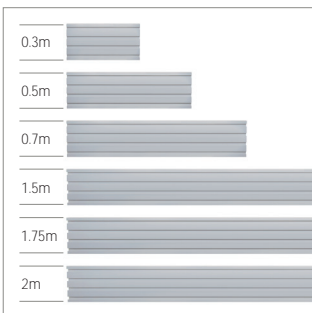
Max load	Dependent on interface arms used
Lengths available	0.3m, 0.5m, 0.7m, 1.5m, 1.75m and 2m
Fixing kit to wall mount	BT8390-WFK1 / 2 / 3 / 4
Fixing kit to pole mount	BT8390-CFK (<i>accessory collar required</i>)
Fixing kit to mount to a support column	BT8380-JPK
Colour	Silver (<i>0.5m length also available in black</i>)

FEATURES

- Part of the System X range for use in a variety of applications; wall, ceiling, trolley etc.
- Ideal for video walls, menu boards and other multi-screen installations
- Can also be used for premium single screen applications
- Compatible with a variety of interface arms and collar compatible accessory mounts
- Suitable for landscape or portrait installs
- High-end aesthetic quality
- Available in a variety of lengths and can be cut if necessary
- Multiple lengths can be joined together using BT8390-EXT to create longer rails
- Lateral adjustment - position interface arms anywhere along the length of the rail
- Supplied with plastic end caps for a neat and tidy finish
- Simple 'hook-on' installation



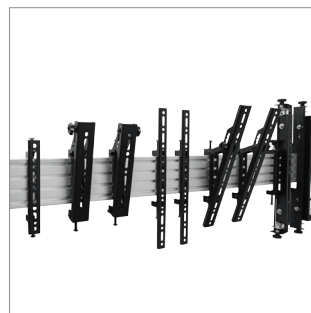
RAIL *ONLY 0.5M LENGTH AVAILABLE IN BLACK



Available in a variety of lengths and can be cut if necessary



Multiple lengths can be joined together using BT8390-EXT (available separately)



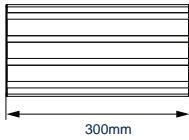
Compatible with a variety of interface arms and collar compatible accessory mounts



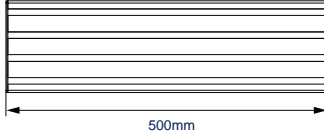
Use BT8390-CFK collar fixing kits and B-Tech collars & poles to create ceiling or oor-to-ceiling installs



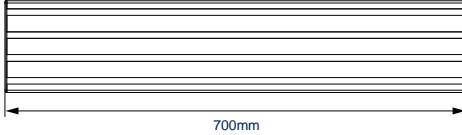
BT8390-030



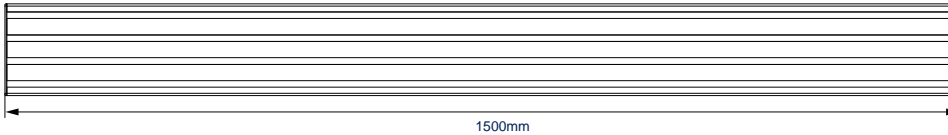
BT8390-050



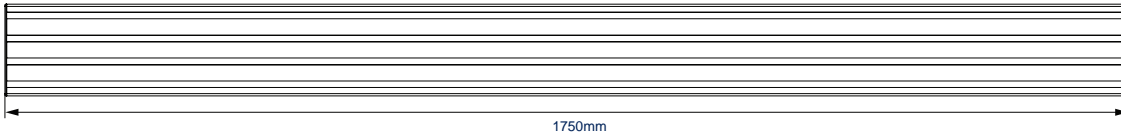
BT8390-070



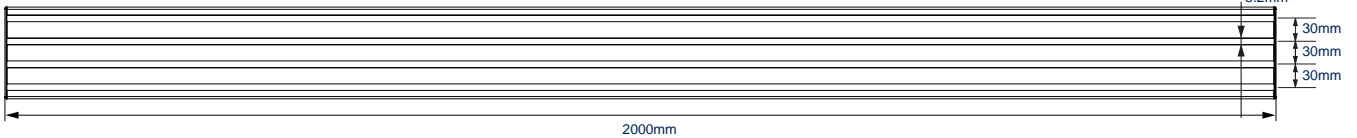
BT8390-150



BT8390-175



BT8390-200



DISTANCE BETWEEN SLOTS

END CAP

PACKING INFORMATION

COLOUR:	ORDER REF:	EAN CODE:	MASTER CARTON QTY:	INNER CARTON QTY:	MASTER CARTON WEIGHT:	MASTER CARTON CUBE:
Silver	BT8390-030/S	5019318301049	1	0	3.kg	0.007cbm
Black	BT8390-050/B	5019318501593	1	0	3.5kg	0.010cbm
Silver	BT8390-050/S	5019318301032	1	0	3.5kg	0.010cbm
Silver	BT8390-070/S	5019318501128	1	0	4kg	0.016cbm
Silver	BT8390-150/S	5019318501142	1	0	6kg	0.033cbm
Silver	BT8390-175/S	5019318501166	1	0	7kg	0.038cbm
Silver	BT8390-200/S	5019318501180	1	0	8kg	0.043cbm

ACCESSORIES AND RELATED PRODUCTS



Joining Plate Kit for xing mounting rails to vertical support columns



Wall Fixing Kits for xing mounting rails to walls



Collar Fixing Kit for xing mounting rails to B-Tech poles (accessory collar also required)



50mm Accessory Collar for xing mounts & accessories to Ø50mm poles

© 2019 B-Tech Av Mounts, Polex & Steel Fixings Ltd. All rights reserved.
 The information in this spec, catalogue or website is given in good faith. B-Tech Av Mounts, Polex & Steel Fixings Ltd.
 does not warrant the suitability, fitness for purpose, safety, accuracy or reliability of the information. It is the user's
 responsibility to ensure that the information is correct for their intended use. B-Tech Av Mounts, Polex & Steel Fixings Ltd.
 does not accept liability for loss or damage caused by reliance on the information. Any reproduction or reuse without permission
 of B-Tech Av Mounts, Polex & Steel Fixings Ltd. is prohibited.

SS-V1-BT8390-210417