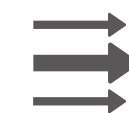




# 5/8-Port Gigabit Desktop Switch

Gigabit Wired Network  
Expansion Solution

TL-SG1005D/TL-SG1008D



QoS



Plug and Play



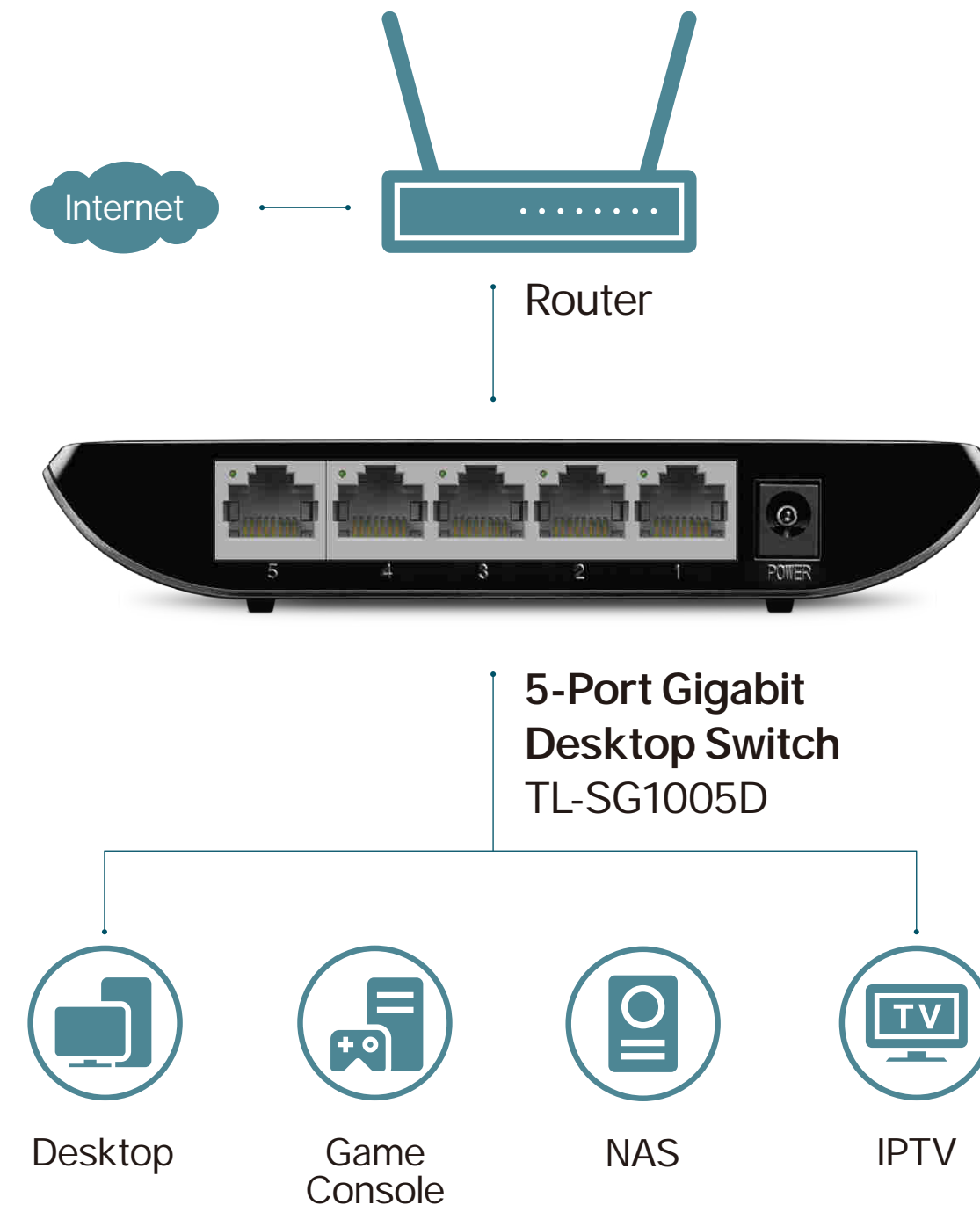
Green Tech

# Overview

The TL-SG1005D/TL-SG1008D Gigabit Desktop Switches provide you an easy way to upgrade your network to 1000Mbps network. Since all ports supports auto MDI/MDIX, there's no need to worry about the cable type to use.

Moreover, with the innovative energy-efficient technology, TL-SG1005D/TL-SG1008D can save power consumption, making them an eco-friendly solution for your business network.

TL-SG1005D is used for demonstration here.



# Features



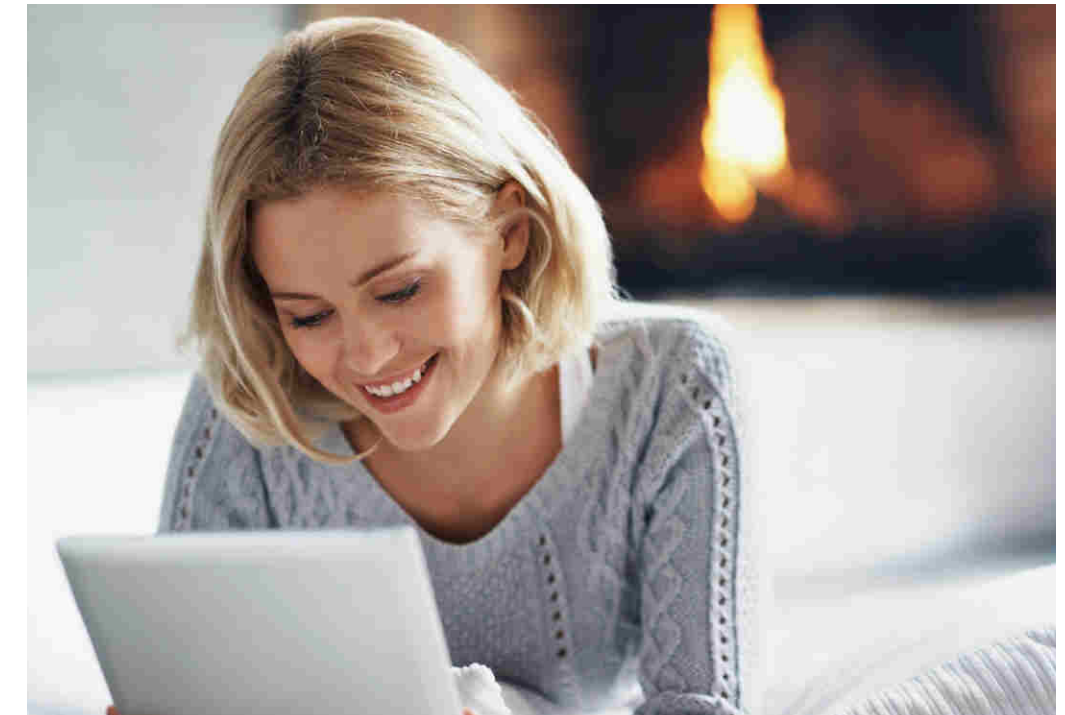
## Gigabit Expansion Solution

- TL-SG1005D equips 5 10/100/1000Mbps ports, providing up to 10Gbps switching capacity
- TL-SG1008D equips 8 10/100/1000Mbps ports, providing up to 16Gbps switching capacity
- 16KB Jumbo Frame improves performance of large data transfers
- IEEE 802.3x flow control provides reliable data transfer



## Highlight Performance

- 802.1p and DSCP QoS enables smooth traffic
- Fanless design ensures quiet operation
- Green technology reduces power consumption



## Easy to Use

- Just plug and play, no configuration required
- Auto MDI/MDIX eliminates the need for crossover cables
- Auto-negotiation intelligently adjusts for compatibility and optimal performance

# Specifications

- Interface:

TL-SG1005D: 5 10/100/1000Mbps RJ45 Ports, Auto Negotiation, Auto MDI/MDIX

TL-SG1008D: 8 10/100/1000Mbps RJ45 Ports, Auto Negotiation, Auto MDI/MDIX

- Standards: IEEE 802.3, IEEE 802.3i, IEEE 802.3u, IEEE802.3ab, IEEE 802.3x, IEEE 802.1p

- Transmission Method : Store and Forward

- Advanced Functions: Green Technology, 802.3x Flow Control, 802.1p/DSCP QoS

- Max Power Consumption (220V/50Hz):

TL-SG1005D: 3.1W; TL-SG1008D: 4.63W

- Power Supply:

TL-SG1005D: External Power Adapter (Output: 5VDC / 0.6A)

TL-SG1008D: External Power Adapter (Output: 9VDC / 0.6A)

- Certification: FCC, CE, RoHs

- Environment:

Operating Temperature: 0°C~40°C (32°F ~ 104°F)

Storage Temperature: -40°C~70°C (-40°F ~158°F)

Operating Humidity: 10%~90%RH, non-condensing;

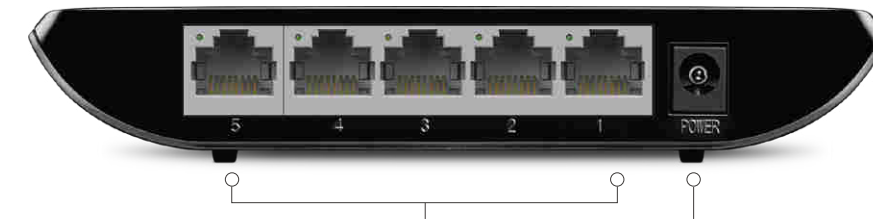
Storage Humidity: 5%~90%RH, non-condensing

- Dimensions (W x D x H):

TL-SG1005D: 5.5 × 3.5 × 0.9 in. (140 × 88 × 23 mm)

TL-SG1008D: 7.1 × 3.5 × 1.0 in. (180 × 90 × 25.5 mm)

- TL-SG1005D:



5 10/100/1000Mbps Ethernet Ports Power Socket

- TL-SG1008D:



8 10/100/1000Mbps Ethernet Ports Power Socket

- Package Contents:

5/8-Port Gigabit Desktop Switch TL-SG1005D/TL-SG1008D

Power Adapter

Installation Guide



For more information, please visit

<https://www.tp-link.com/en/products/details/TL-SG1005D.html> & <https://www.tp-link.com/en/products/details/TL-SG1008D.html>

or scan the QR code left and search for your product.

Specifications are subject to change without notice. TP-Link is a registered trademark of TP-Link Technologies Co., Ltd. Other brands and product names are trademarks or registered trademarks of their respective holders. No part of the specifications may be reproduced in any form or by any means or used to make any derivative such as translation, transformation, or adaptation without permission from TP-Link Technologies Co., Ltd.

<https://www.tp-link.com>

TP-Link 5/8-Port Gigabit Desktop Switch TL-SG1005D/TL-SG1008D