

Quick Installation Guide



Wireless USB Adapter

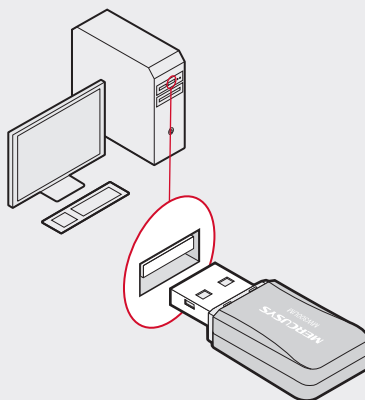
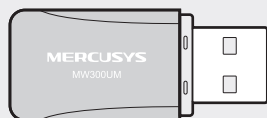
* MW300UM is used for demonstration
in this QIG.

For more information, please visit our website:
<http://www.mercusys.com>

7107500048 REV1.0.0

1 | Connect to a Computer

Insert the adapter into a USB port on your
computer directly.

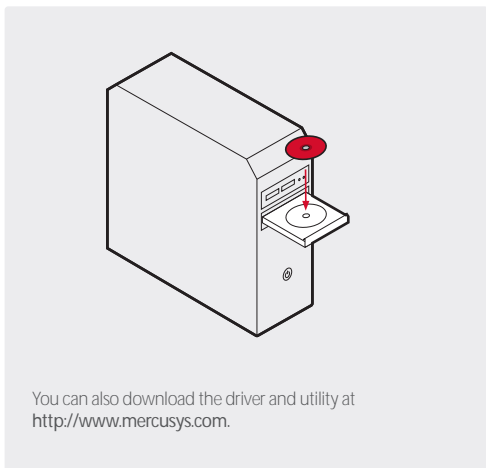


Note:

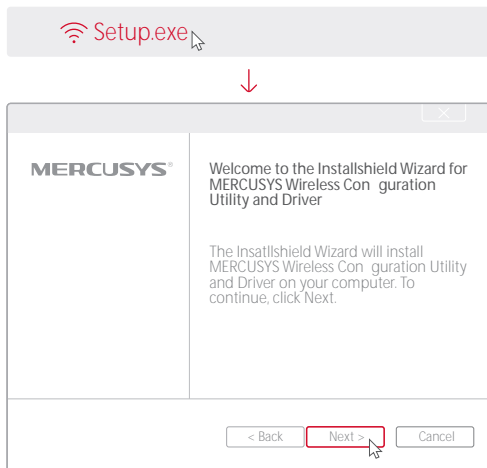
In Windows XP, a Found New Hardware Wizard
window will appear when the adapter is detected.
Please click **Cancel**.

2 | Install Driver and Utility

A: Insert the CD and run the CD manually.



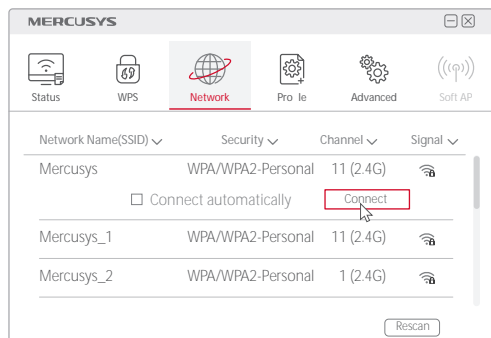
B: Double click **Setup.exe**, then follow the InstallShield Wizard to complete the installation.




3 | Join a Wireless Network

Option 1: Via Mercusys Utility

Select your preferred Wi-Fi network from the pop-up utility window and click **Connect**. The symbol  indicates successful connection.



Option 2: Via Windows Wireless Utility

Click  (Network icon) on the taskbar, select your preferred Wi-Fi network, and click **Connect**.

Note:

In Windows XP, you need to disable Mercusys Utility (if installed) before using Windows Wireless Utility. Go to **Advanced > Select wireless configuration tool**, and select **Use Windows wireless configuration tool**.

