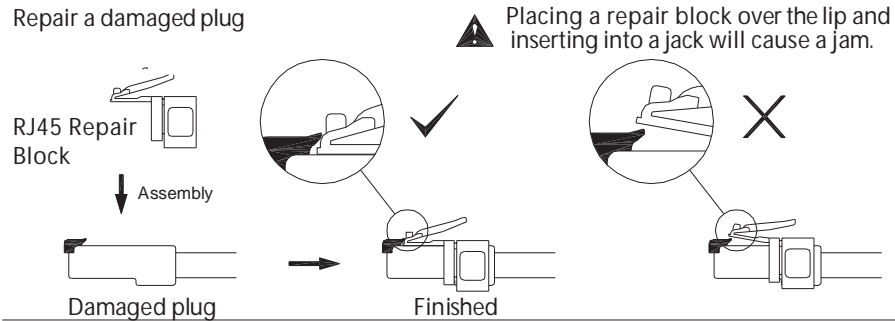


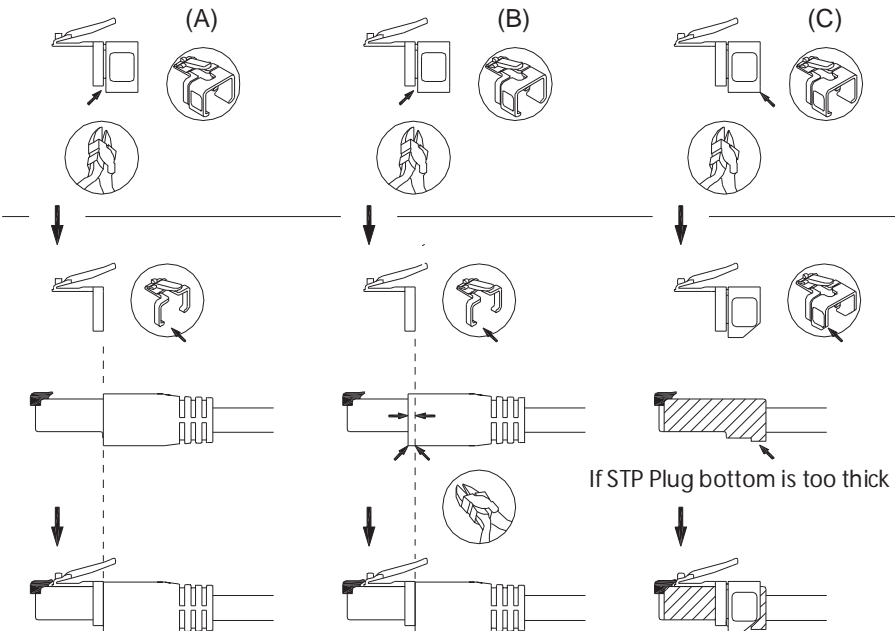
## Repair a damaged plug quickly & easily



### Repair a damaged plug

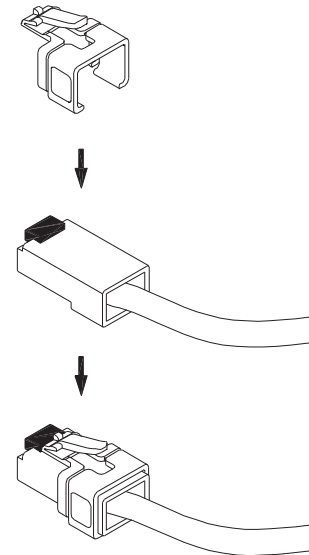
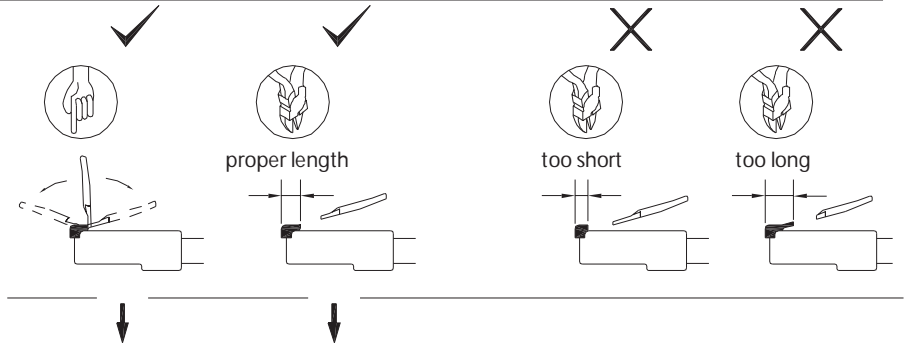


### Other situations



### Instructions

1. Use a cutting tool (or your fingers) to partially remove the existing latch on the cable's plug; leave a 1-mm lip. (Note: breaking the existing latch at too short or too long a length will make for a poor connection that could either jam or incorrectly fit your cable jack [see diagram below]).
2. If color-coding your cables, choose a repair block that matches the cable you want to repair. If not, select a block from the container.
3. Place the repair block over the base of the plug. If necessary, slide the top of the new clip under the 1-mm lip you cut. Installation is complete.



Compliance Specification:  
°RoHS  
°REACH

Lifetime Warranty