

# 2x M.2 NGFF SSD RAID Controller Card plus 2x SATA Ports

PEXM2SAT3422



\*actual product may vary from photos

FR: Guide de l'utilisateur - [fr.startech.com](http://fr.startech.com)  
DE: Bedienungsanleitung - [de.startech.com](http://de.startech.com)  
ES: Guía del usuario - [es.startech.com](http://es.startech.com)  
NL: Gebruiksaanwijzing - [nl.startech.com](http://nl.startech.com)  
PT: Guia do usuário - [pt.startech.com](http://pt.startech.com)  
IT: Guida per l'uso - [it.startech.com](http://it.startech.com)

For the latest information, technical specifications, and support for this product, please visit [www.startech.com/PEXM2SAT3422](http://www.startech.com/PEXM2SAT3422).

## FCC Compliance Statement

This equipment has been tested and found to comply with the limits for a Class B digital device, pursuant to part 15 of the FCC Rules. These limits are designed to provide reasonable protection against harmful interference in a residential installation. This equipment generates, uses and can radiate radio frequency energy and, if not installed and used in accordance with the instructions, may cause harmful interference to radio communications. However, there is no guarantee that interference will not occur in a particular installation. If this equipment does cause harmful interference to radio or television reception, which can be determined by turning the equipment off and on, the user is encouraged to try to correct the interference by one or more of the following measures:

- Reorient or relocate the receiving antenna.
- Increase the separation between the equipment and receiver.
- Connect the equipment into an outlet on a circuit different from that to which the receiver is connected.
- Consult the dealer or an experienced radio/TV technician for help

This device complies with part 15 of the FCC Rules. Operation is subject to the following two conditions: (1) This device may not cause harmful interference, and (2) this device must accept any interference received, including interference that may cause undesired operation.

Changes or modifications not expressly approved by StarTech.com could void the user's authority to operate the equipment.

## Industry Canada Statement

This Class B digital apparatus complies with Canadian ICES-003.

Cet appareil numérique de la classe [B] est conforme à la norme NMB-003 du Canada.

CAN ICES-3 (B)/NMB-3(B)

## Use of Trademarks, Registered Trademarks, and other Protected Names and Symbols

This manual may make reference to trademarks, registered trademarks, and other protected names and/or symbols of third-party companies not related in any way to StarTech.com. Where they occur these references are for illustrative purposes only and do not represent an endorsement of a product or service by StarTech.com, or an endorsement of the product(s) to which this manual applies by the third-party company in question. Regardless of any direct acknowledgement elsewhere in the body of this document, StarTech.com hereby acknowledges that all trademarks, registered trademarks, service marks, and other protected names and/or symbols contained in this manual and related documents are the property of their respective holders.

# Table of Contents

<b>Introduction .....</b>	<b>1</b>
Packaging contents .....	1
System requirements .....	1
<b>Product diagram .....</b>	<b>2</b>
<b>Installation .....</b>	<b>2</b>
Install a drive .....	2
Install the PCIe card .....	3
Install a driver .....	4
Con rm installation .....	4
Initialize a drive .....	4
<b>About LED noti cations .....</b>	<b>5</b>
<b>Technical support .....</b>	<b>6</b>
<b>Warranty information .....</b>	<b>6</b>

# Introduction

## Packaging contents

- 1 x M.2 SSD RAID controller card
- 1 x low-profile bracket
- 2 x M.2 mounting screws
- 1 x quick start guide

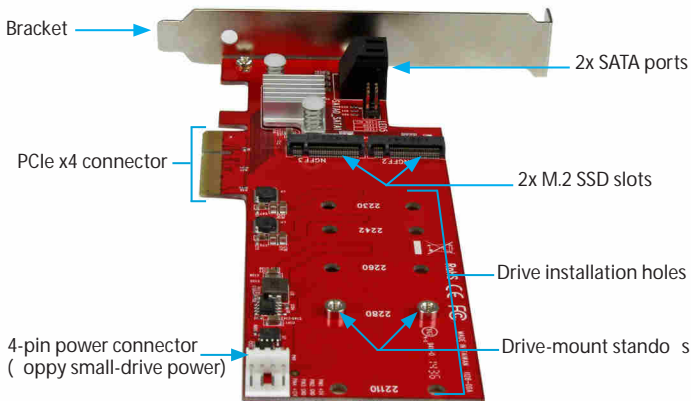
## System requirements

- Computer enabled with PCI Express® and an available PCI Express x4, x8, or x16 slot
- Any of the following operating systems:
  - Windows® 10 (32-bit or 64-bit)
  - Windows 8.1 (32-bit or 64-bit)
  - Windows 8 (32-bit or 64-bit)
  - Windows 7 (32-bit or 64-bit)
  - Windows Server® 2012
  - Windows Server 2008 R2
  - Mac OS 10.8 and later (tested up to 10.11)
  - Linux® 3.5

System requirements are subject to change. For the latest requirements, please visit [www.startech.com/PEXM2SAT3422](http://www.startech.com/PEXM2SAT3422).

# Product diagram

## Rear view



## Installation

### Install a drive

**Warning!** Drives and PCIe cards should be handled carefully, especially when they're transported. If you're not careful with your drives, you may lose data as a result. Make sure that you're properly grounded by wearing an anti-static strap when you install any computer component. If an anti-static strap isn't available, touch a large grounded metal surface for several seconds to discharge any built-up static electricity.

1. By default, the PEXM2SAT3422 comes with the drive-mount standoffs preinstalled in the **2280** position. Depending on the length of your drive, you may need to move the preinstalled drive-mount standoffs. Place your drive next to the card and note the drive installation holes that match the height of your drive. If the drive-mount standoffs are already installed in the correct position, proceed to step 4.
2. Use a screwdriver (not included) to remove the screws on the reverse side of the card that are holding the drive-mount standoffs in place.
3. Place the screws and drive-mount standoffs that you removed in step 2 in the drive installation holes that match the length of your drive and use a screwdriver to tighten the screws on the reverse side of the card.

4. Gently slide the M.2 connector on your drive into the corresponding connector on the PEXM2SAT3422.

**Note:** The connector on your drive is keyed so that it only fits one way.

5. Place one of the included M.2 mounting screws in the drive-mount stand-off and use a screwdriver to tighten the screw and hold the drive in place.
6. If necessary, insert a second drive.

To remove a drive, use a screwdriver to remove the M.2 mounting screw that is holding the drive in place and pull the drive out of the PEXM2SAT3422.

## Install the PCIe card

**Warning!** PCIe cards can be severely damaged by static electricity. If an anti-static strap isn't available, discharge any built-up static electricity by touching a large grounded metal surface for several seconds.

1. Turn off your computer and any devices or peripherals that are connected to it (for example, printers, external storage, and so on).
2. Unplug the power cable from the back of your computer.
3. Disconnect any peripheral devices that are connected to your computer.
4. Remove the cover from your computer case. Consult the documentation that came with your computer for details about how to do this safely.
5. Locate an open PCIe slot and remove the corresponding metal cover plate from the back of your computer case. Consult the documentation that came with your computer for details about how to do this safely. This card works in PCIe slots of x4, x8, or x16 lanes.
6. Gently insert the card into the open PCIe slot and fasten the bracket to the back of the case.

**Note:** If you install the card into a small form factor or a low-profile desktop system, it may be necessary to replace the preinstalled standard-profile bracket with the included low-profile (half-height) installation bracket.

7. As necessary, connect SATA cables from the SATA ports on the card to the SATA drives inside of your computer.
8. Connect a 4-pin floppy power connector (small drive power).
9. Place the cover back onto your computer case.
10. Reconnect the power cable to the back of your computer.
11. Reconnect all of the peripheral devices that you disconnected in step 3.
12. Turn on your computer.

## Install a driver

1. To download the latest drivers, use a Web browser and navigate to [www.startech.com/PEXM2SAT3422](http://www.startech.com/PEXM2SAT3422).
2. Click the **Support** tab.
3. Download the driver.
4. When the download is complete, extract the contents of the compressed file that you downloaded.
5. Double-click the appropriate driver for the version of operating system that you're running and follow the on-screen instructions to complete the installation.

**Note:** You may be asked to restart your computer to complete the installation.

## Confirm installation

1. On your computer, navigate to **Device Manager**.
2. Under **Storage Controllers**, right-click **Marvel 92xx** and click **Properties**.
3. Check to make sure that the device is installed and working correctly. In some cases, an exclamation mark appears next to devices that aren't installed correctly.

## Initialize a drive

If you install a drive that already has data on it, the drive appears under **My Computer** or **Computer** with a drive letter assigned to it.

If you install a brand-new drive that doesn't contain any data, you must prepare the drive for use.

On a computer running a version of Windows, do the following:

1. Navigate to **Disk Management**.
2. A dialog window appears and asks you to initialize the drive. Depending on the version of Windows that you're running, you have the option to create either an **MBR** or a **GPT** disk.

**Note:** GPT (GUID partition) is required for drives larger than 2 TB but GPT isn't compatible with some earlier versions of operating systems. MBR is supported by both earlier and later versions of operating systems.

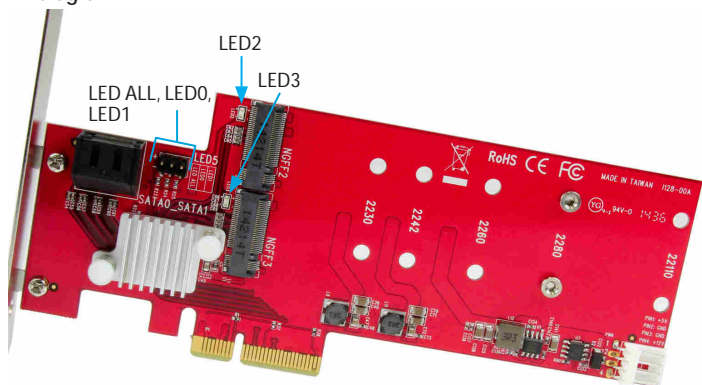
3. Locate the disk that is labeled **Unallocated**. To confirm that the drive is the correct one, check the drive capacity.
4. Right-click the section of the window that says **Unallocated** and click **New Partition** or **New Simple Volume**.
5. To initialize the drive in the format of your choice, complete the on-screen instructions.

When the drive is successfully installed, it appears under **My Computer** or **Computer** with a drive letter assigned to it.

# About LED notifications

LED/pin header	Behavior	Status
M.2 drive green LED (LED2 and LED3)	LED is illuminated	The drive is on and linked to the computer.
	LED is blinking	The drive is being accessed.
SATA pin header (LED0 and LED1)	LED is illuminated	The drive is on and linked to the computer.
	LED is blinking	The drive is being accessed.
LED all pin header	LED is illuminated	Any of the four drives is on and linked to the computer.
	LED is blinking	Any of the four drives is being accessed.

## LED diagram



To read the instruction manual, including instructions about RAID settings, please visit [www.startech.com/PEXM2SAT3422](http://www.startech.com/PEXM2SAT3422).



# Technical support

StarTech.com's lifetime technical support is an integral part of our commitment to provide industry-leading solutions. If you ever need help with your product, visit [\*\*www.startech.com/support\*\*](http://www.startech.com/support) and access our comprehensive selection of online tools, documentation, and downloads.

For the latest drivers/software, please visit [\*\*www.startech.com/downloads\*\*](http://www.startech.com/downloads)

## Warranty information

This product is backed by a two-year warranty.

StarTech.com warrants its products against defects in materials and workmanship for the periods noted, following the initial date of purchase. During this period, the products may be returned for repair, or replacement with equivalent products at our discretion. The warranty covers parts and labor costs only. StarTech.com does not warrant its products from defects or damages arising from misuse, abuse, alteration, or normal wear and tear.

### Limitation of Liability

In no event shall the liability of StarTech.com Ltd. and StarTech.com USA LLP (or their officers, directors, employees or agents) for any damages (whether direct or indirect, special, punitive, incidental, consequential, or otherwise), loss of profits, loss of business, or any pecuniary loss, arising out of or related to the use of the product exceed the actual price paid for the product. Some states do not allow the exclusion or limitation of incidental or consequential damages. If such laws apply, the limitations or exclusions contained in this statement may not apply to you.

Hard-to-find made easy. At StarTech.com, that isn't a slogan. It's a promise.

StarTech.com is your one-stop source for every connectivity part you need. From the latest technology to legacy products — and all the parts that bridge the old and new — we can help you find the parts that connect your solutions.

We make it easy to locate the parts, and we quickly deliver them wherever they need to go. Just talk to one of our tech advisors or visit our website. You'll be connected to the products you need in no time.

Visit [www.startech.com](http://www.startech.com) for complete information on all StarTech.com products and to access exclusive resources and time-saving tools.

*StarTech.com is an ISO 9001 Registered manufacturer of connectivity and technology parts. StarTech.com was founded in 1985 and has operations in the United States, Canada, the United Kingdom and Taiwan servicing a worldwide market.*