



**Jabra** GN

## Jabra Biz 2400 II Engineered for the clearest conversations

Jabra Biz 2400 II enables clearest conversation for closer connections with your caller. It includes acoustic shock protection, extra padding for additional comfort on the ear cushions and headband, as well as unbreakable 360° flexible spin boom arm and a reinforced cord – to suit the most demanding environments.

### Crystal clear sound

Jabra Biz 2400 II is designed to deliver best-in-class audio performance, no matter how loud the environment is. Now with enhanced speakers in the ear cups, agents can hear customers better than ever before – offering a superior experience and faster call resolution.

### Best in class build quality

The Jabra Biz 2400 II is highly durable - no matter how challenging the contact center environment. Features like reinforced cords and an unbreakable 360° flexible spin boom arm ensure Jabra Biz 2400 II can stand up to the most demanding environments.

### Ultimate comfort

The Jabra Biz 2400 II is the lightest in its class. Leatherette ear cushions and headband padding secure an all day comfort. Available in a 3-in-1 wearing style for Mono and headband wearing style for Duo.

### Easy to deploy and manage

Jabra Biz 2400 II headsets are Microsoft Teams Certified<sup>1</sup> and optimized for use with all leading desk phone systems and Unified Communications platforms. Jabra Xpress enables you to easily configure all of your company's audio devices from one central point.<sup>2</sup>

<sup>1</sup> Only USB CC variants have received Microsoft Teams certification <sup>2</sup> Go to [Jabra.com/xpress](https://www.jabra.com/xpress)

<sup>3</sup> Programmable buttons increase user efficiency by supporting applications including Jabra Contact Center Agent App for Cisco Finesse and Push-To-Talk functionality.

<sup>4</sup> Bluetooth connection to mobile devices with Jabra Biz 2400 II USB BT Mono/Duo only

### At a glance

#### Jabra Biz 2400 II corded headsets

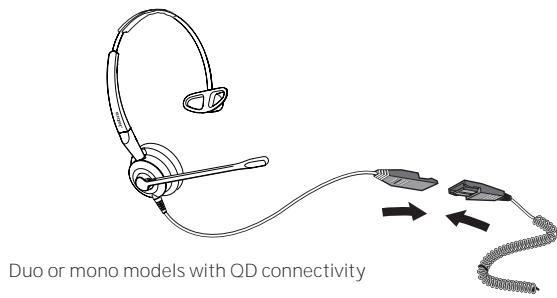
- Breath-resistant microphone with noise cancelation
- Reinforced cord and programmable buttons for USB variant<sup>3</sup>
- 40% lighter than competitors, soft pouch leatherette ear cushions, headphone padding and 360° flexible spin boom arm
- Category best quality and the lightest in its class



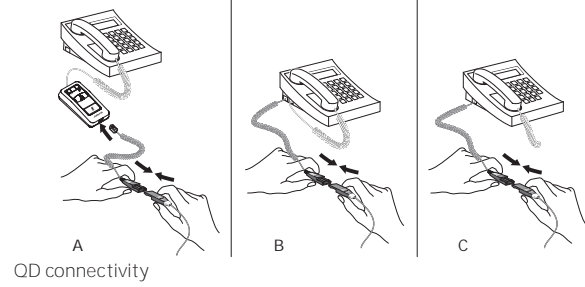
Works with<sup>4</sup>



# How to connect



Duo or mono models with QD connectivity

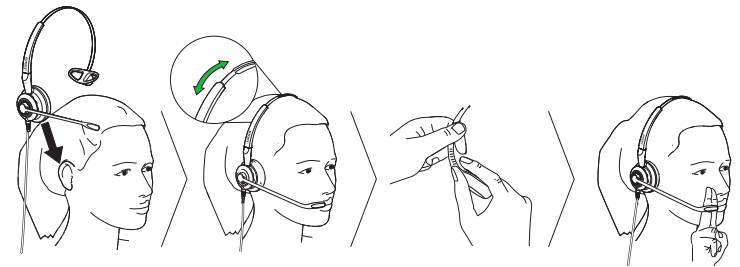


QD connectivity



Duo or mono models with USB connectivity simply plug into the USB port on your PC

# How to wear



Jabra Biz 2400 II headsets have adjustable headbands for all day wearing comfort and bendable 360° spin boom arms, so they can be easily adjusted without breaking. It is recommended to position the microphone close to your mouth (approx. two fingers width).



Features	Jabra Biz 2400 II QD Mono/Duo	Jabra Biz 2400 II USB CC Mono/Duo	Jabra Biz 2400 II USB BT Mono/Duo
Connectivity <sup>1</sup> – number of devices	1/desk phone	1/softphone	1/softphone, mobile devices <sup>2</sup>
User sound protection (PeakStop™, Noise@Work, Acoustic Shock, G616 compliant)	Yes	Yes	Yes
Digital Signal Processing	No	Yes	Yes
Breath-resistant microphone	Yes	Yes	Yes
Noise cancelling microphone	Yes	Yes	Yes
Microphone (G-MOS, Tx, CC)	4.56	4.56	4.56
Speaker (wideband/up to khz)	4.5/ 6.8	6.8	6.8
Hi-Fi sound (up to khz)	No	16	16
Adjustable boom arm	360°	360°	360°
Microsoft Certification	Not Applicable	Microsoft Teams	Skype for Business
Flexible boom arm	Yes	Yes	Yes
USB-controller	No	Yes	Yes
Ear cushions	Large leatherette <sup>3</sup>	Large leatherette <sup>3</sup>	Large leatherette <sup>3</sup>
Headband padding	Yes	Yes	Yes
Wearing styles	Headband, earhook <sup>4</sup> neckband <sup>4</sup>	Headband, earhook <sup>4</sup> neckband <sup>4</sup>	Headband, earhook <sup>4</sup> neckband <sup>4</sup>
Headset weight without cord - Mono/Duo (g)	45/70	43/66	43/66
Cord length (cm)	100	230	250

**Compatibility** For compatibility information go to [Jabra.com](https://www.jabra.com)

<sup>1</sup> All QD headsets require a lower QD connection cable or other enabler (Jabra Link 180, 230, 260, 260 MS, 265 or Jabra Link 280) for a complete solution. <sup>2</sup> The USB controller on the headset includes a Bluetooth circuit, which gives you up to 10m range between the headset and a Bluetooth enabled device. <sup>3</sup> Larger ear cushions come as standard on Duo versions and are available as an accessory for Mono versions. The larger ear cushions are only suitable for the headband version of the Biz 2400 II and not for other wearing styles like neckband. <sup>4</sup> 3-in-1 wearing style for Mono only.