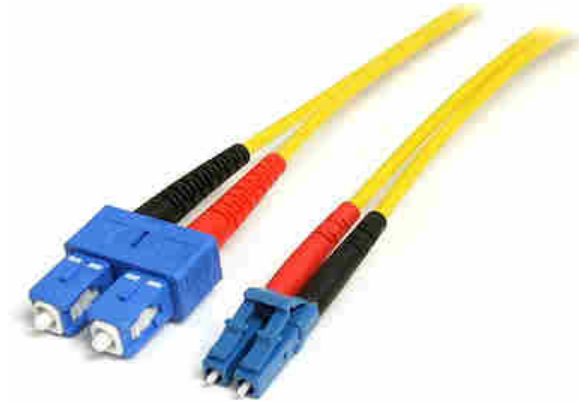


Fiber Optic Cable - Single-Mode Duplex 9/125 - LSZH - LC/SC - 10 m

Product ID: SMFIBLCSC10



The SMFIBLCSC10 10m LC to SC Single-Mode Duplex Fiber Cable features 9/125 micron fiber for high-speed, high bandwidth data transmissions over Gigabit Ethernet and Fiber Channel networks, with support for duplex single-mode applications.

This LC-SC patch cable is housed in a LSZH (Low-Smoke, Zero-Halogen) flame retardant jacket, to ensure minimal smoke, toxicity and corrosion when exposed to high sources of heat, in the event of a fire – an ideal solution for use in industrial settings, central offices and schools, as well as residential settings where building codes are a consideration.

Each Duplex 9/125 (OS1) Single-Mode Fiber Patch Cable is individually tested and certified to be within acceptable optical insertion loss limits for guaranteed compatibility and 100% reliability, and is backed by our lifetime warranty.

Certifications, Reports and Compatibility



Applications

- Use in Gigabit Ethernet and Fiber Channel applications
- Ideal solution for data applications requiring high speed data transmission
- Broadband systems
- Telecommunication/Data communication

- Fiber Connections in Patch Panels, Hubs, Switches, Routers

Features

- 1x LC SM male connector
- 1x SC SM male connector
- OS1 (9/125)
- LSZH (Low-Smoke, Zero-Halogen) cable jacket
- Attenuation loss meets or exceeds industry standards
- Molded connectors

Hardware

Warranty	Lifetime
Fire Rating	LSZH Rated (Low Smoke Zero Halogen)
Fiber Size	9/125

Performance

Maximum Data Transfer Rate	100Gbps
Cable Rating	1Gbps / 10Gbps / 40Gbps / 100Gbps
Fiber Classification	OS1
Type	Single Mode

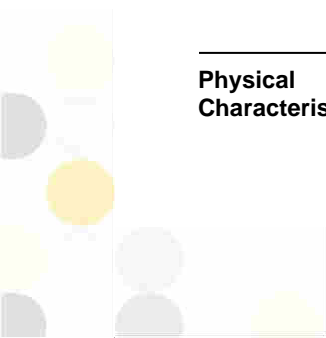
Connector(s)

Connector A	1 - Fiber Optic LC Duplex
Connector B	1 - Fiber Optic SC Duplex

Environmental

Operating Temperature	-20C to 60C (-4F to 140F)
Storage Temperature	-20C to 60C (-4F to 140F)
Humidity	0~90% RH

Physical Characteristics



Color	Yellow
Cable Length	32.8 ft [10 m]
Product Length	32.8 ft [10.0 m]
Product Width	0.0 in [0.0 mm]
Product Height	0.0 in [0.0 mm]
Weight of Product	4.7 oz [134.0 g]

Packaging Information

Package Quantity	1
Package Length	8.7 in [22.0 cm]
Package Width	7.9 in [20.0 cm]
Package Height	1.1 in [28.0 mm]
Shipping (Package) Weight	5.0 oz [143.0 g]

What's in the Box

Included in Package	1 - 10m Single Mode Duplex Fiber Patch Cable LC-SC
---------------------	--

**Product appearance and specifications are subject to change without notice.*

