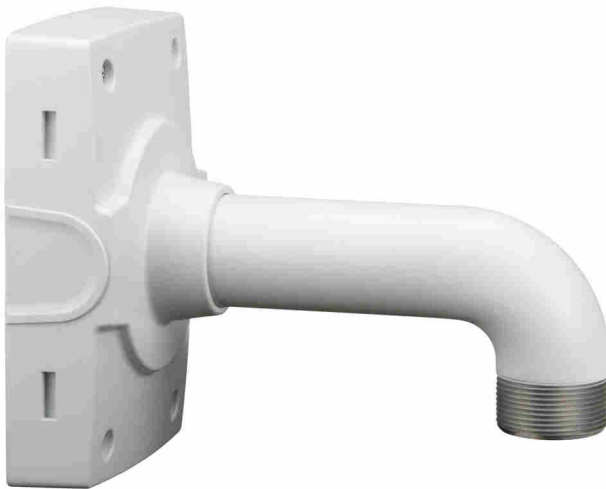


# AXIS T91D61 Wall Mount 1.5" NPS

## For selected fixed dome cameras

AXIS T91D61 is an aluminum wall mount with a 1.5" NPS thread. It is compatible with Axis fixed dome pendant kits and Axis ACI 3/4" conduit adapters. The cables can be routed through the back hole, or from the side by using a conduit connection. The wall mount includes AXIS T91A6 Pipe Seal.

- > [Indoor and outdoor](#)
- > [Robust and safe installation](#)
- > [Ease of installation](#)
- > [Vandal resistance with IK10](#)



## AXIS T91D61 Wall Mount 1.5" NPS

General	
Supported products	AXIS P32 Series (requires camera-specific pendant kit) AXIS P33 Series (requires camera-specific pendant kit) AXIS P3707-PE (requires AXIS T94M02D Pendant Kit) AXIS Q35 Series (requires camera-specific pendant kit) AXIS Q36 Series (requires camera-specific pendant kit)
Dimensions	140 x 268 x 196 mm (5 1/2 x 10 1/2 x 7 3/4 in)
Weight	1.4 kg (3.1 lb)
Maximum load	15 kg (33 lb)
Cable routing	Back: Cable hole Side: Cable conduit holes M20 (3/4")
Environment	Indoor Outdoor
Approvals	IEC/EN/UL 60950-1
	IEC/EN/UL 60950-22 EN 50581 IEC 62262 IK10
Included accessories	Installation Guide AXIS T91A6 Pipe Seal
Optional accessories	Axis network cable couplers, AXIS Conduit Adapter U-shape 30 mm A For more accessories, see <a href="http://www.axis.com">www.axis.com</a>
Warranty	3-year warranty, see <a href="http://axis.com/warranty">axis.com/warranty</a>
Environmental responsibility: <a href="http://axis.com/environmental-responsibility">axis.com/environmental-responsibility</a>	