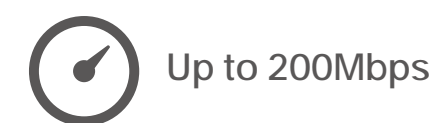
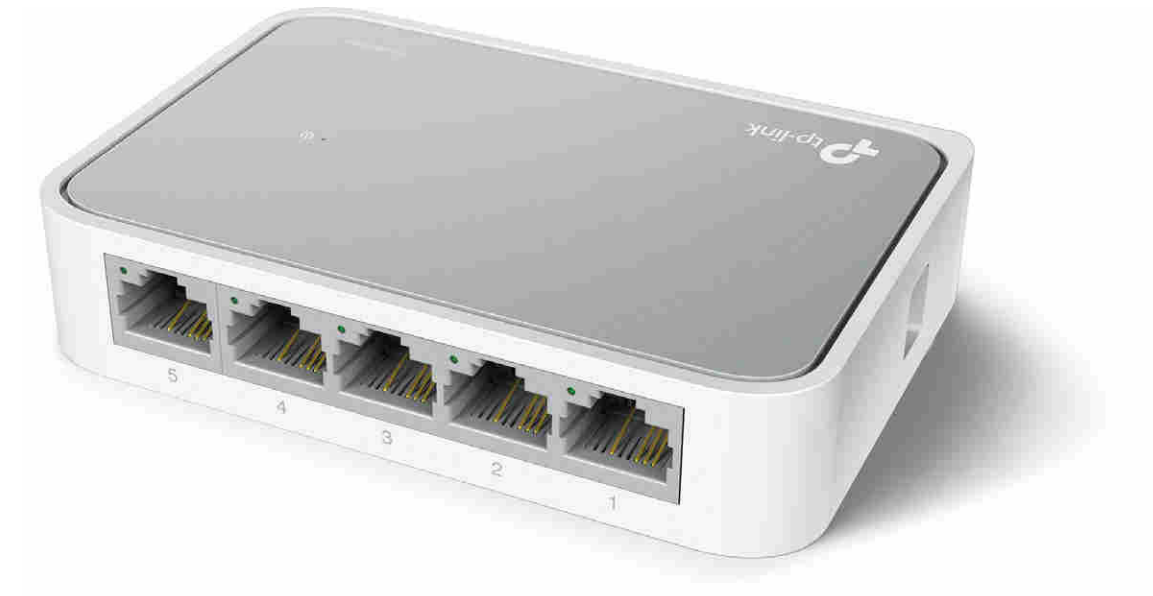




5/8-Port 10/100Mbps Desktop Switch

Fast Ethernet Wired Network Expansion Solution

TL-SF1005D/TL-SF1008D

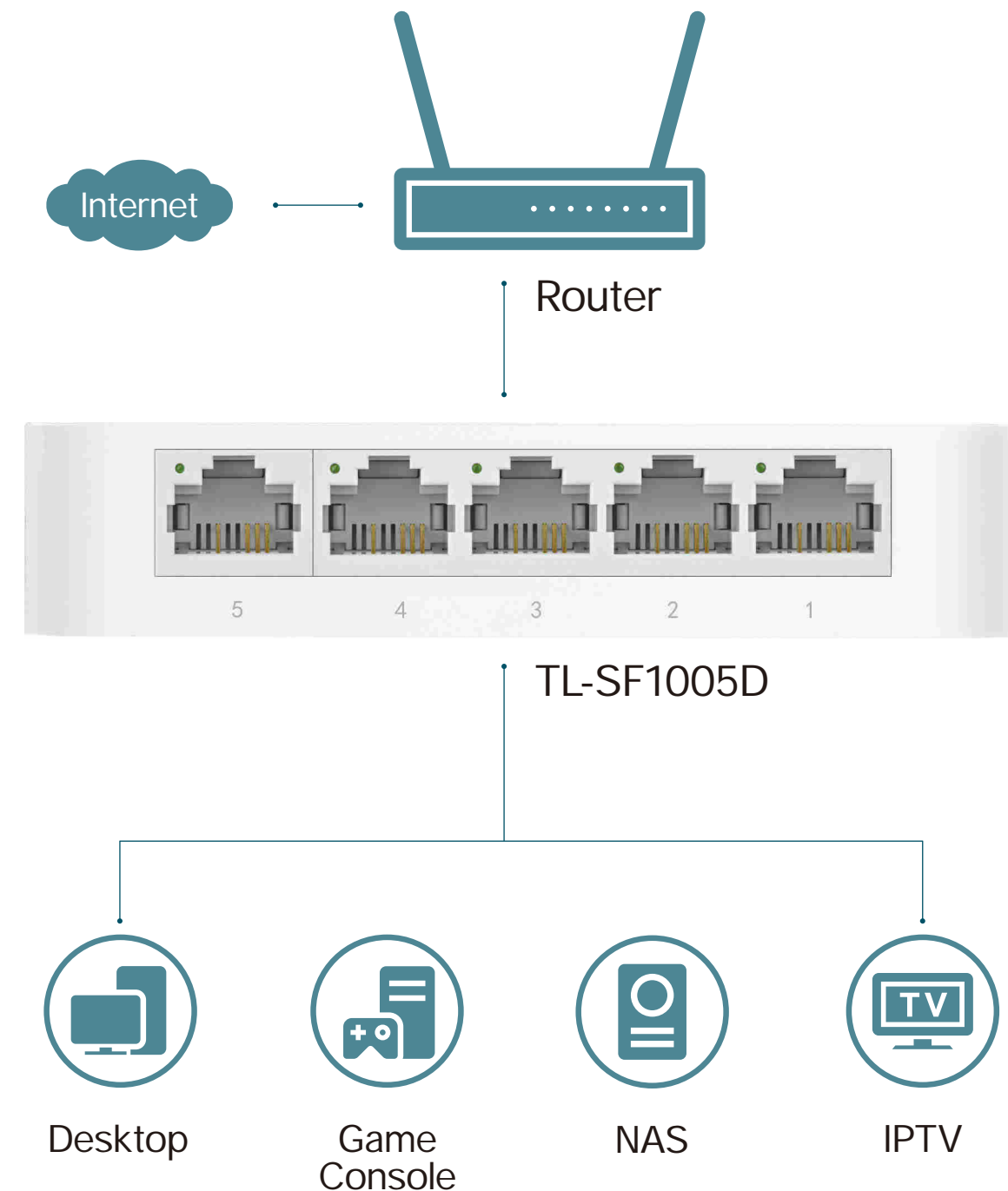


Overview

The 5/8-Port 10/100Mbps desktop switch TL-SF1005D/TL-SF1008D provide an easy way to expand your wired network. All RJ45 ports support Auto MDI/MDIX, eliminating the need to worry about the type of cable to use. Featuring full duplex mode, the switches can process data at a rate of up to 200Mbps making it an ideal choice for expanding your high performance wired network

Moreover, with innovative energy-efficient technology, the TL-SF1005D/TL-SF1008D can save power consumption, making them an eco-friendly solution for your home or office network.

TL-SF1005D is used for demonstration here.

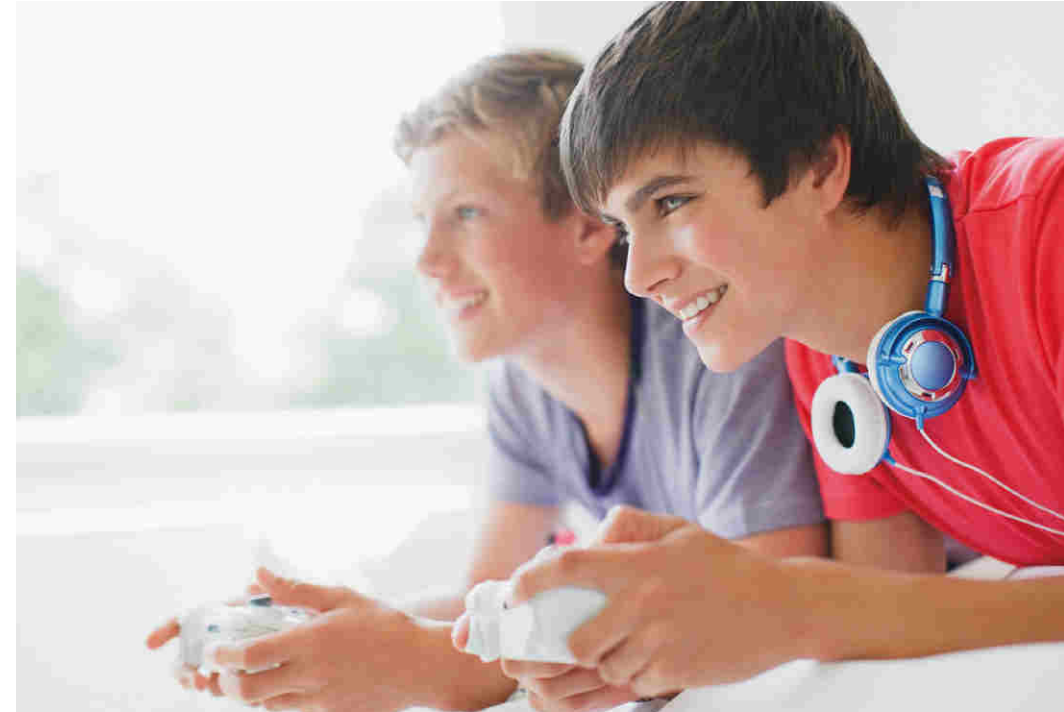


Features



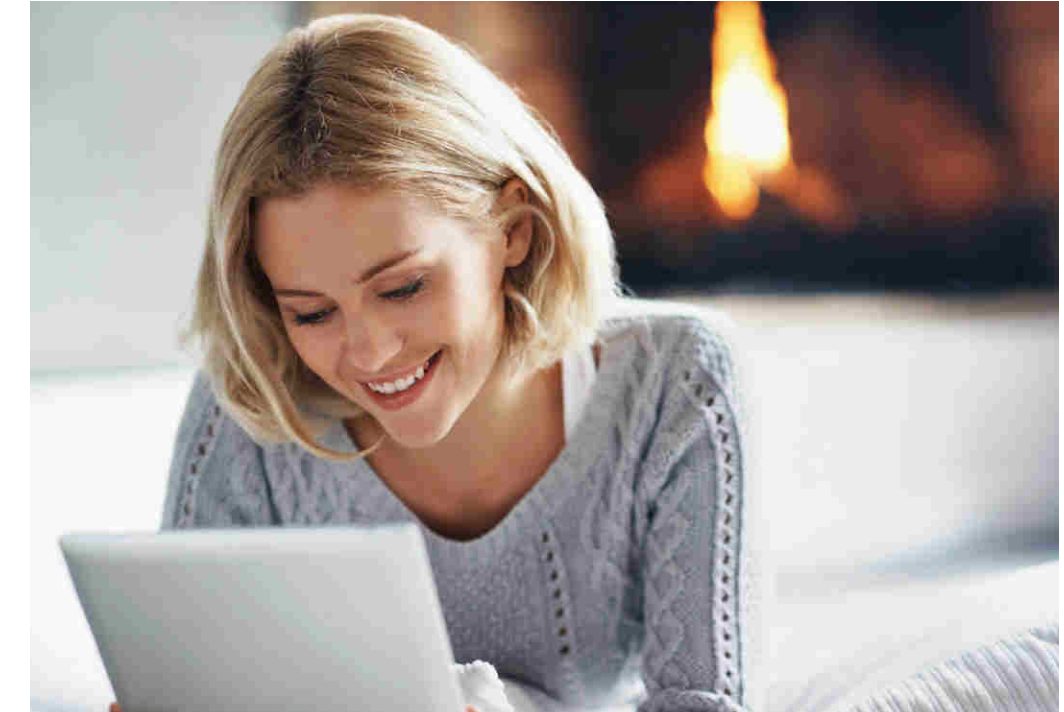
Fast Ethernet Expansion Solution

- TL-SF1005D equips 5 10/100Mbps ports, providing up to 1Gbps switching capacity
- TL-SF1008D equips 8 10/100Mbps ports, providing up to 1.6Gbps switching capacity



Highlight Performance

- Fanless design ensures quiet operation
- Green technology reduces power consumption
- IEEE 802.3x flow control provides reliable data transfer



Easy to Use

- Just plug and play, no configuration required
- Compact design meets your needs in any circumstance
- Auto MDI/MDIX eliminates the need for crossover cables
- Auto-negotiation intelligently adjusts for compatibility and optimal performance

Specifications

- Interface:

TL-SF1005D: 5 10/100Mbps RJ45 Ports, Auto Negotiation, Auto MDI/MDIX

TL-SF1008D: 8 10/100Mbps RJ45 Ports, Auto Negotiation, Auto MDI/MDIX

- Standards: IEEE 802.3, IEEE 802.3u, IEEE 802.3x

- Transmission Method : Store and Forward

- Advanced Functions: Green Technology, 802.3x Flow Control

- Max Power Consumption (220V/50Hz):

TL-SF1005D: 1.87W; TL-SF1008D: 2.05W

- Power Supply: External Power Adapter (Output: 5VDC / 0.6A)

- Certification: FCC, CE, RoHs

- Environment:

Operating Temperature: 0°C to 40°C (32°F to 104°F)

Storage Temperature: -40°C to 70°C (-40°F to 158°F)

Operating Humidity: 10% to 90%RH, non-condensing;

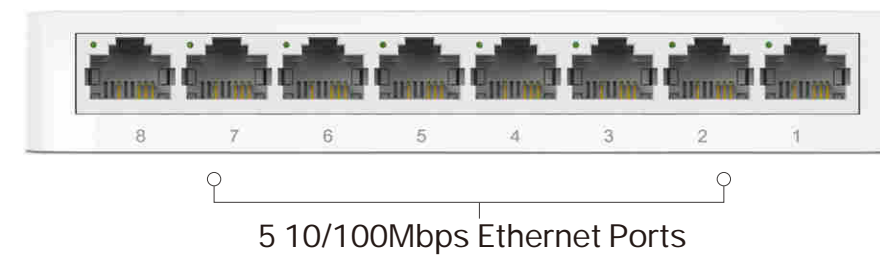
Storage Humidity: 5% to 90%RH, non-condensing

- Dimensions (W x D x H):

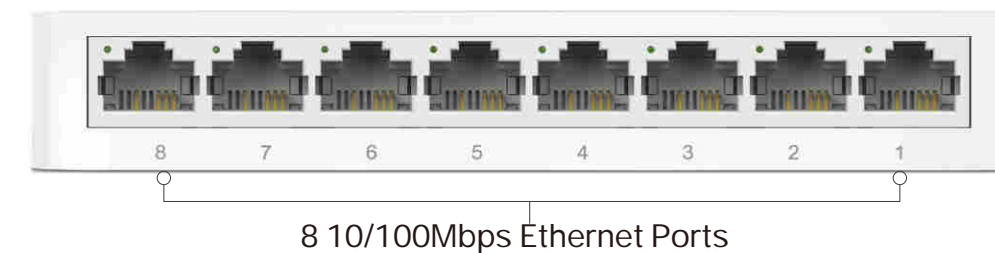
TL-SF1005D: 4.1 × 2.8 × 0.9 in. (103.5 × 70 × 22 mm)

TL-SF1008D: 5.3 × 3.1 × 0.9 in. (134.5 × 79 × 22.5 mm)

- TL-SF1005D:



- TL-SF1008D:



- Package Contents:

5/8-Port 10/100Mbps Desktop Switch TL-SF1005D/TL-SF1008D

Power Adapter

Installation Guide



For more information, please visit

<https://www.tp-link.com/en/products/details/TL-SF1005D.html> & <https://www.tp-link.com/en/products/details/TL-SF1008D.html>

or scan the QR code left and search for your product.

Specifications are subject to change without notice. TP-Link is a registered trademark of TP-Link Technologies Co., Ltd. Other brands and product names are trademarks or registered trademarks of their respective holders. No part of the specifications may be reproduced in any form or by any means or used to make any derivative such as translation, transformation, or adaptation without permission from TP-Link Technologies Co., Ltd.

www.tp-link.com

TP-Link 5/8-Port 10/100Mbps Desktop Switch TL-SF1005D/TL-SF1008D