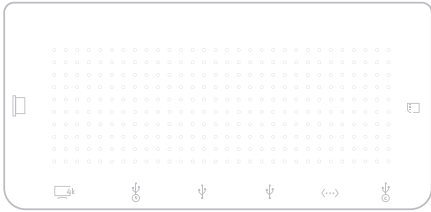
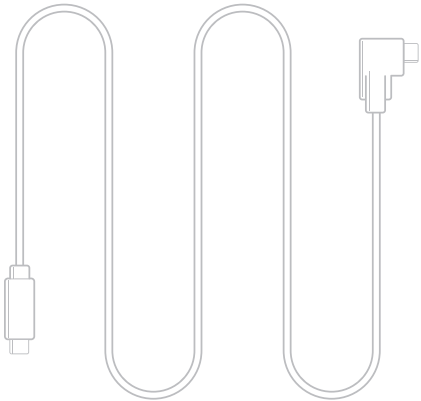


## What's in the Box:



StayGo USB-C Hub



1-meter desk cable



stowable travel cable

thank you

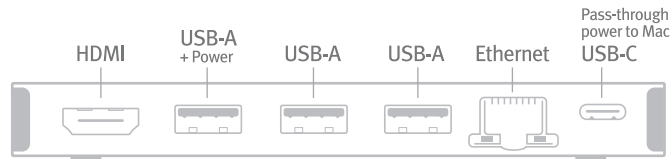
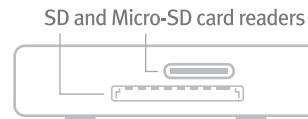
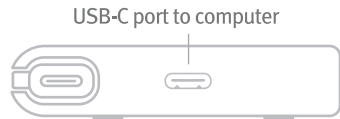
**StayGo**  
owner's guide

 twelve south

## Interface Overview:

### Ports

The StayGo provides all the legacy ports present on the original MacBook Pro, allowing you to connect to all your peripherals and devices with ease.



Have questions? Visit [twelvesouth.com](https://www.twelvesouth.com) or email [support@twelvesouth.com](mailto:support@twelvesouth.com)

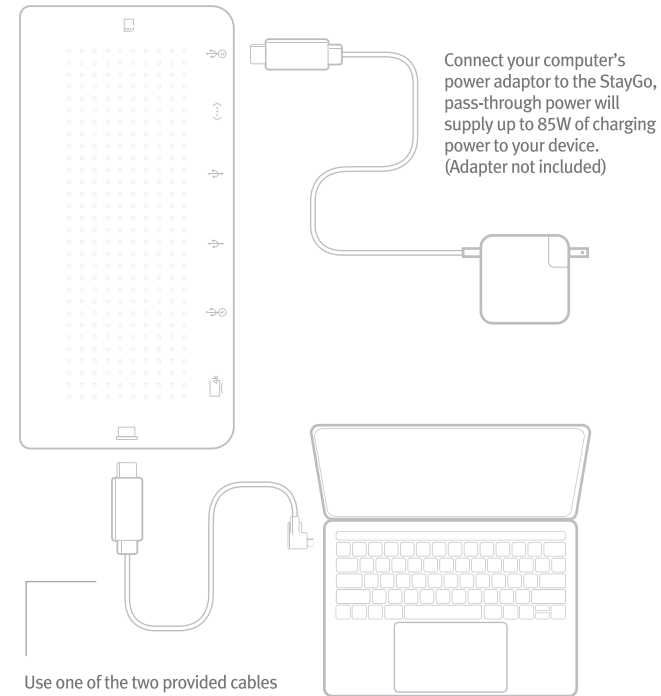
©2019 Twelve South, LLC. All rights reserved.

## Connection Guide:

### Charging your device through StayGo

Connect your device's USB-C charging cable to the USB-C port on the back of StayGo, and connect to your USB-C charger.

Power delivery 3.0 pass-through delivers up to 85W of charging power using the laptop's USB-C power adapter (after deduction of 15W used by the hub). USB-C power adapter not included.



## How to Use StayGo:

### Choose cable for your setup

Desktop mode: connect desk cable to USB-C port on the side of StayGo and connect the other end to your device.



Travel mode: slide travel cable out of the cable slot on the side of StayGo, connect cable to USB-C port on the side of StayGo, and connect the other end to your device.

