

PHILIPS

Lily Outdoor spot light

Hue White and Colour Ambiance

LED integrated

White and coloured light

Low Volt system – base unit

Smart control with Hue Bridge*



17418/30/P7



Plug in and light up your outdoor space

This Lily spot light 3-pack lets you highlight your favourite outdoor features, create interesting shadows and more. Simply connect the smart outdoor spotlights into any standard wall socket using the included low-voltage power supply to get millions of shades of white or coloured light in your garden.

Limitless possibilities

- Paint your outdoors with 16 million colours
- Unwind with warm to cool white light
- Special light for special occasions

Easy control and comfort

- Set timers for your convenience
- Installation-free dimming
- Control it your way

Full control from a smart device with the Hue bridge

- Requires a Philips Hue bridge

Specially designed for your outdoor spaces

- Easy to install and extend
- Power supply and plug included
- Weather-proof (IP65)
- High-quality aluminium and superior synthetics

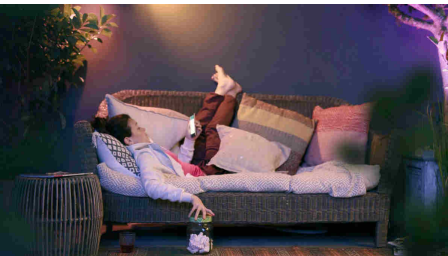
Highlights

Paint your outdoors



With Philips Hue outdoor lighting, there's no limit to the magic you can add. Play with 16 million colours and all shades of white light to create the effect you want. Highlight objects, trees or pathways to make your space stand out. Use the Hue app to save your favourite light settings and recall them whenever you want with the tap of a finger.

Warm to cool white light



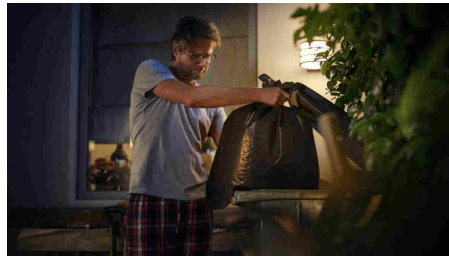
Extend your evenings with Philips Hue outdoor lighting. Set the right ambience on your patio, balcony or porch and relax. From the warm white light of a summer sun, to the ice cool daylight of winter: you can enjoy any shade of white light to fit your mood throughout the year.

Special light for special occasions



Holiday cheer starts here – with smart light! Use your Philips Hue lights to transform your home into a festive experience: bright reds and greens for Christmas, subtle pastels for spring or even an eerie purple glow to create the most haunted house on the street at Halloween.

Set timers for convenience



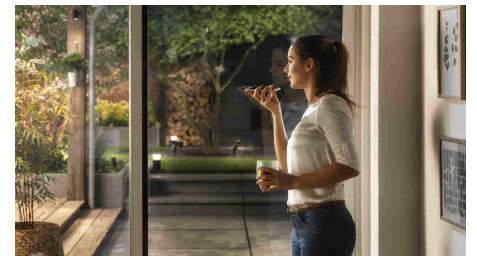
Enjoy longer evenings outside, finish the gardening or just take the rubbish out after sunset. Have your Philips Hue lights turn on automatically by setting schedules or using the sunset/sunrise routine. And of course, you can also turn on or dim your lights this way. You'll never have to worry whether you've left any lights on.

Installation-free dimming



Experience guaranteed smooth dimming with Philips Hue. Not too bright. Not too dark. Just right. To dim the lights, you don't need any wiring, an electrician or installation.

Control it your way



Connect your Philips Hue lights with the Bridge and start discovering the endless possibilities. Control your lights from your smartphone or tablet via the Philips Hue app, or add the indoor switches to your system to change your lights. Set timers, notifications, alarms and more for the full Philips Hue experience. Philips Hue even works with Amazon Alexa, Apple Homekit and the Google Assistant to allow you to control your lights with your voice.

Requires a Philips Hue bridge



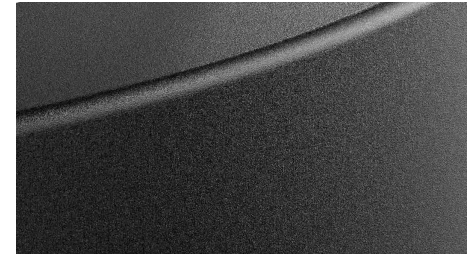
Connect your Philips Hue lights with the Bridge to control your lights from your smart phone or tablet via the Philips Hue app. Or control your Philips Hue lights with the Philips Hue dimmer indoor switch for on/off and dimming functionalities.

Power supply and plug included



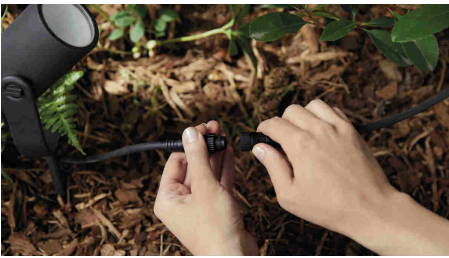
The base unit packs come with all the elements you need to get started, this includes light points, power supply, extension cables and connectors. So all you have to do is unpack, install where you want them and turn them on.

High-quality



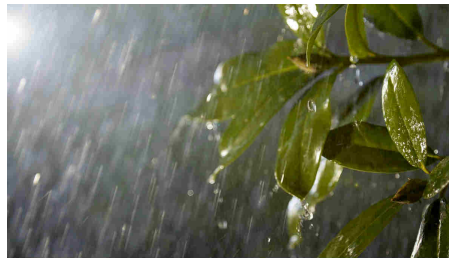
The products are made specifically for outdoor use. We use the highest-quality materials to ensure the best performance in outdoor conditions, as well as smart use of materials to optimise radio frequency.

Easy to install and extend



Brighten up dark paths, create highlights in your landscaping or create a unique ambience on the patio. You can do it yourself, using Hue spots or bollards. The products are based on low voltage, safe to use and easy to install. No more complexity to get lighting outdoors: start to create and extend to suit your needs.

Weather-proof (IP65)



This Philips Hue outdoor fixture is specially designed for use in outdoor environments and has undergone rigorous tests to ensure its performance. The IP level is described by two figures: the first one refers to the protection level against dust, the second against water. This lamp is designed with IP65: this means that it is protected against low-pressure jets of water. It is a higher level of protection than IP44 and commonly used when luminaires are close to the ground or require higher protection due to certain outdoor conditions.

Specifications

Design and finishing

- Colour: Black
- Material: Aluminium

Extra feature/accessory incl.

- Dimmable with the Hue app and switches: Yes

Light characteristics

- Colour rendering index (CRI): 80

Miscellaneous

- Especially designed for: Garden and Patio
- Type: Spot Light

Product dimensions and weight

- Net weight: 3.180 kg
- Cable length: 0.5 m
- Height: 19.4 cm
- Length: 8.4 cm
- Width: 7.0 cm

Service

- Warranty: 2 year(s)

Technical specifications

- Lumen output at 4000K: 1,770 lm
- Lifetime up to: 25,000 h
- Light colour: 2000-6500 Hue White Colour Ambiance
- Mains power: Range 220 V–240 V, 50-60 Hz
- LED: Yes
- Built-in LED: Yes
- Number of bulbs: 3
- Wattage bulb included: 8 W
- IP code: IP65, dust tight, protection from jetting water
- Class of protection: II - double insulated
- Replaceability of light source: Non-replaceable LED light source
- Replaceability of control gears: Replaceable control gear by end user
- Lumen output at 2700K: 350 lm

What's supported

- Compatible with E ect's feature: Yes
- Philips Hue App: IOS 15 and above, Android 10.0 and above
- De ned support period: 5 years, except 3 years for Hue Bridge (see "End of Support Policy")

Packaging dimensions and weight

- EAN/UPC - product: 8718696167984
- Net weight: 3.65 kg
- Gross weight: 4.17 kg
- Height: 219 mm
- Length: 312 mm
- Width: 237 mm
- Material number (12NC): 915005630101



Issue date: 2024-09-17
Version: 0.383

© 2024 Signify Holding. All rights reserved. Signify does not give any representation or warranty as to the accuracy or completeness of the information included herein and shall not be liable for any action in reliance thereon. The information presented in this document is not intended as any commercial offer and does not form part of any quotation or contract, unless otherwise agreed by Signify. Philips and the Philips Shield Emblem are registered trademarks of Koninklijke Philips N.V.

www.lighting.philips.com