

DAB/FM Clock Radio

Operating Instructions GB Mode d'emploi FR



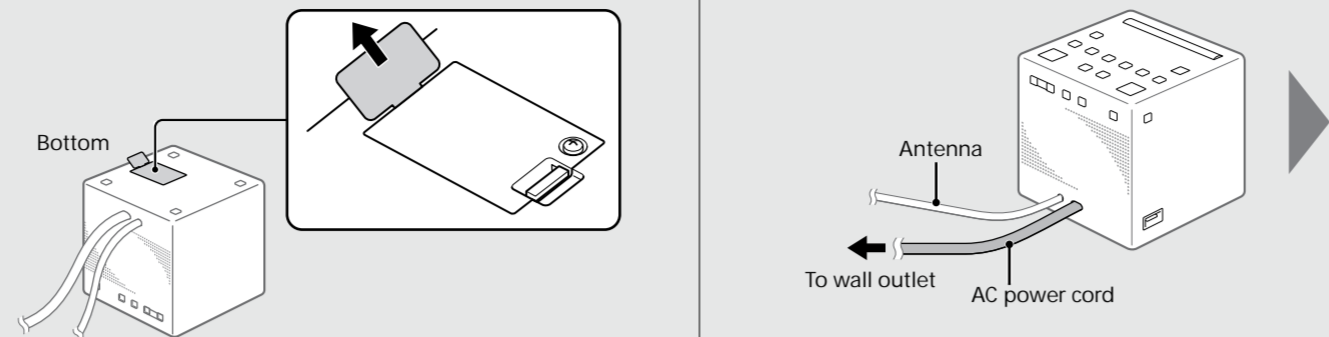
©2015 Sony Corporation Printed in China

http://www.sony.eu/

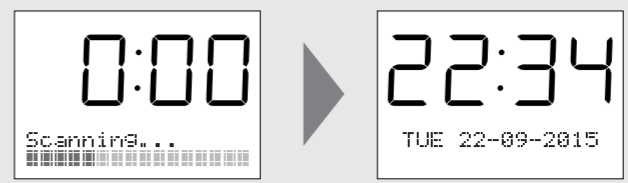
XDR-C1DBP

Getting Started

- 1 Remove the battery insulation film. 2 Connect the AC power cord to a wall outlet.



When the radio is turned on for the first time, DAB auto tune and the current time setting are performed automatically.

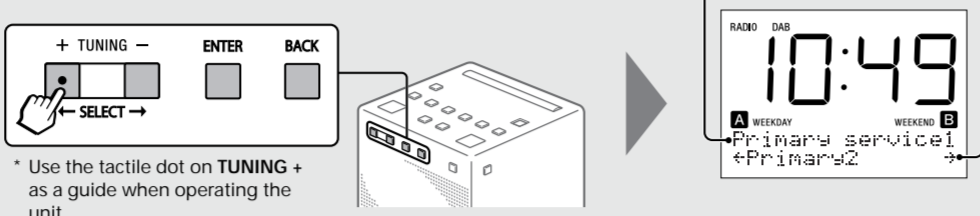


Note: When the auto time setting is not possible, set the time manually. See 'Set Date & Time' in 'Setup Menu Options.'

Listening to the Radio

- 1 Select DAB or FM.

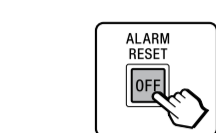
- 2 Select the desired station.



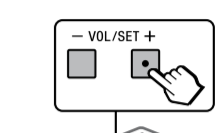
- 2 Press and hold TUNING+ or - to search the FM station.



To turn off the radio



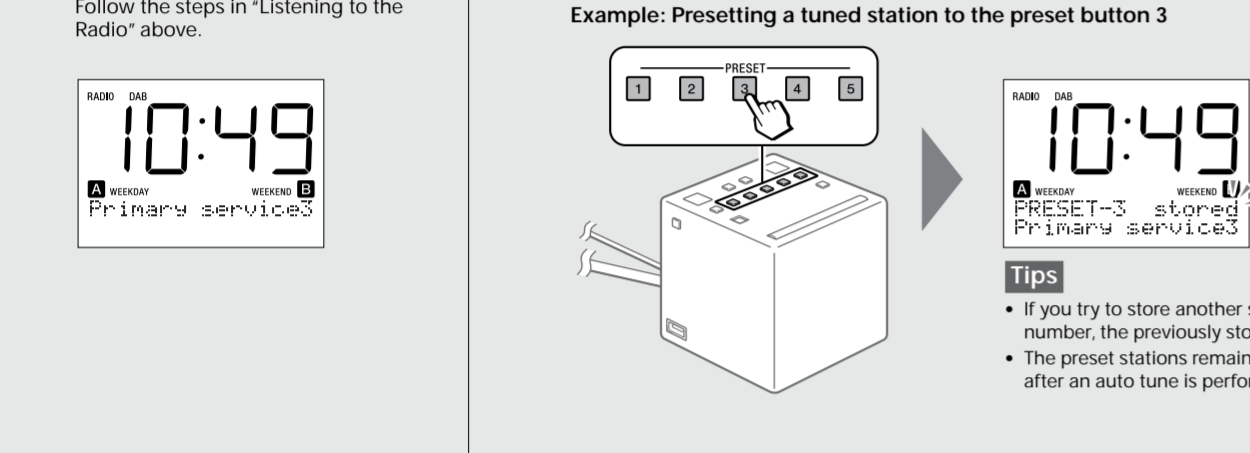
To adjust the volume



Presetting stations (5 DAB and 5 FM)

- 1 Tune to the station you want to preset.

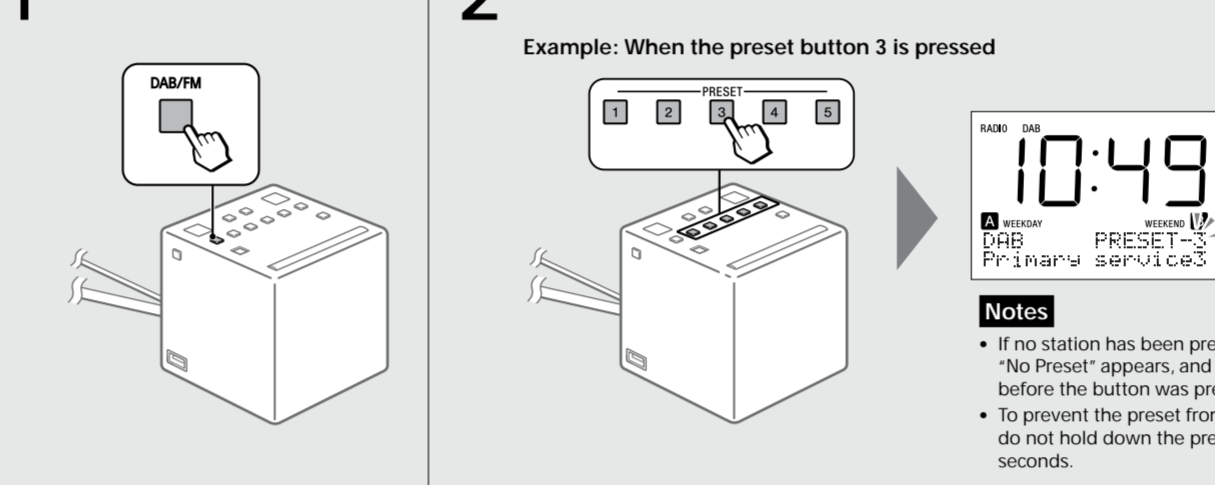
- 2 Press and hold the desired preset button (1-5) until 'PRESET-X stored' appears on the display.



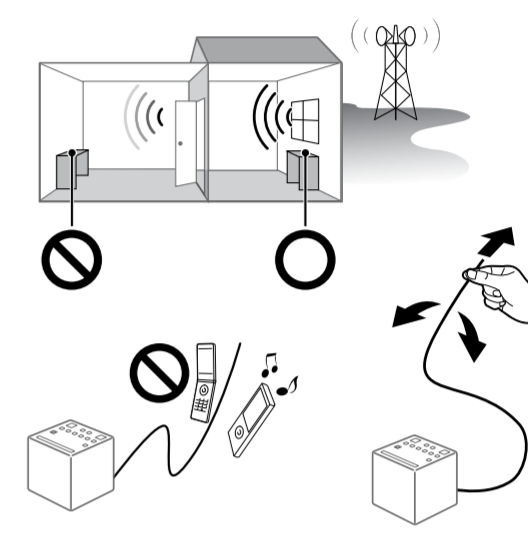
Listening to a preset station

- 1 Select DAB or FM.

- 2 Select the desired preset station.



Improving DAB/FM radio reception

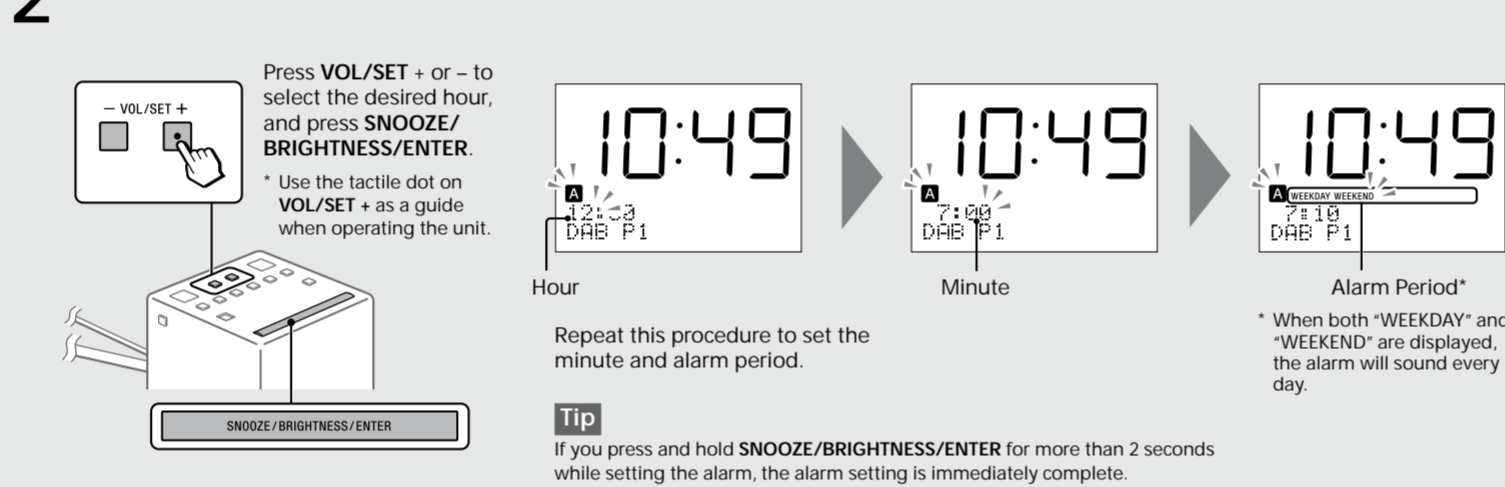


Setting the alarm

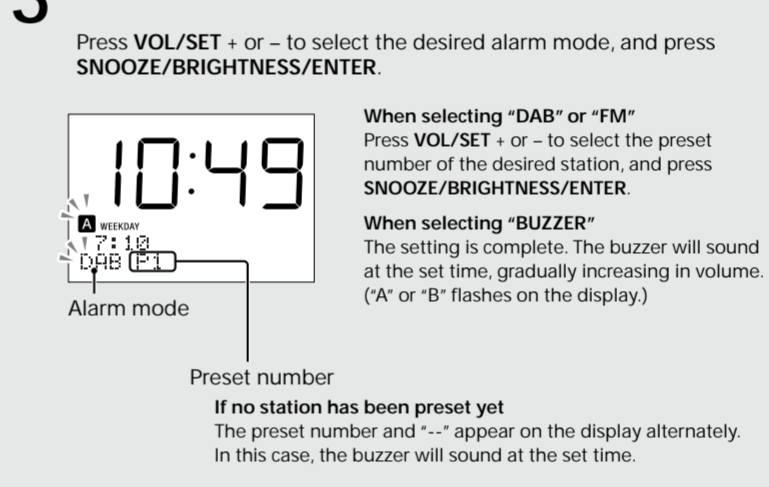
To set the radio alarm, first preset the radio station before setting the alarm. See 'Presetting stations (5 DAB and 5 FM).'

- 1 Press and hold SET ALARM/ALARM A or B to select the alarm program.

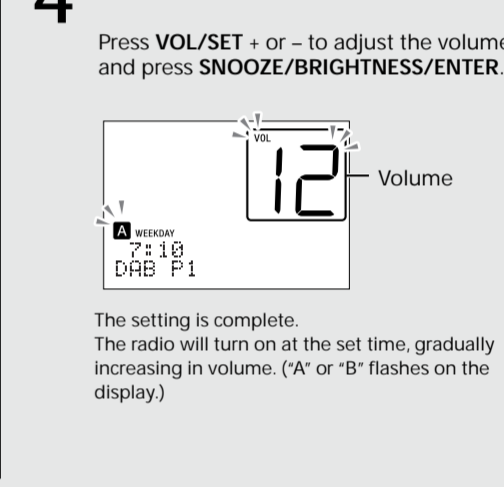
- 2 Set the hour, minute, and alarm period ('WEEKDAY,' 'WEEKEND,' or both).



- 3 Set the alarm mode ('DAB,' 'FM,' or 'BUZZER').



- 4 Adjust the volume.



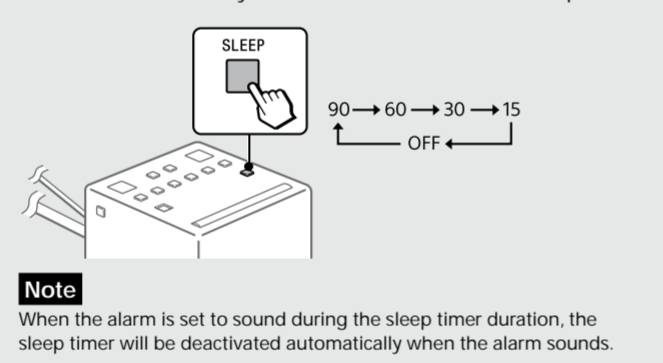
To stop the alarm

To doze for a few more minutes

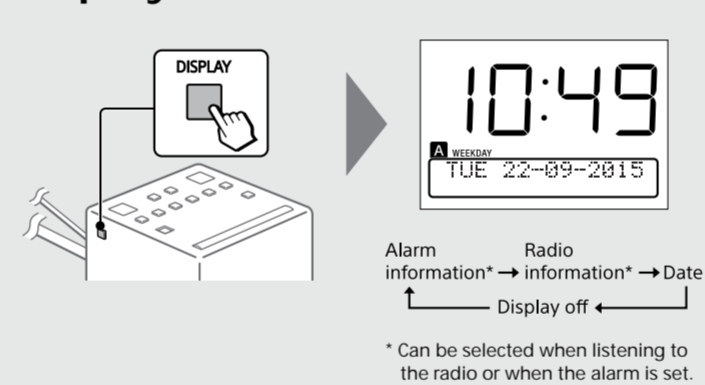
Press SNOOZE/BRIGHTNESS/ENTER. The sound turns off, but will automatically come on again after 10 minutes. Each time you press SNOOZE/BRIGHTNESS/ENTER, the snooze time changes as follows: 10 → 20 → 30 → 40 → 50 → 60. 'A' or 'B' flashes on the display. Note: If no operation is performed while the alarm is sounding, the alarm will stop after about 60 minutes.

Setting the sleep timer

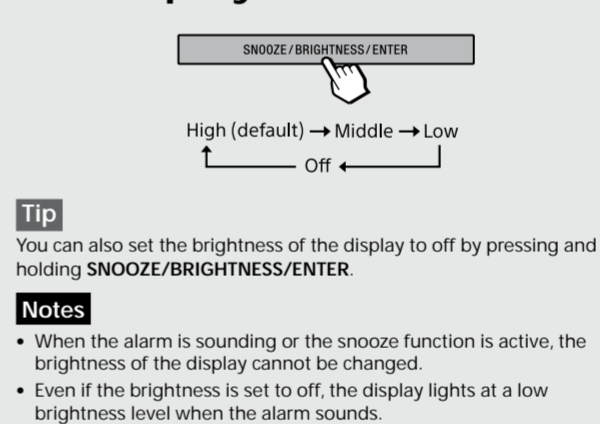
The radio automatically turns off after a set time has elapsed.



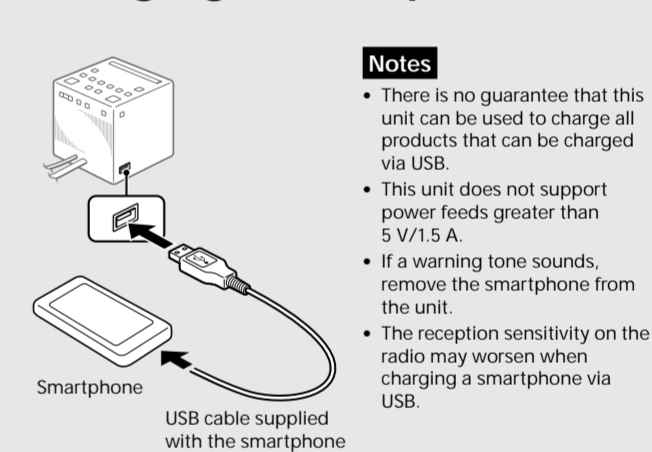
Switching the information display



Setting the brightness of the display

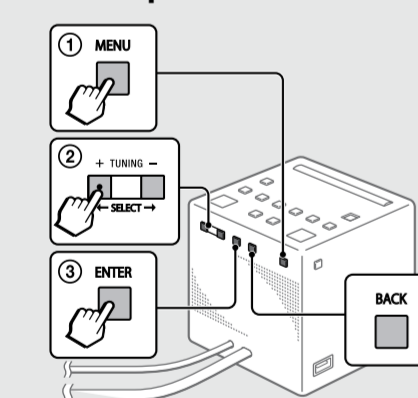


Charging a smartphone



Setup Menu Options

Basic Operations:



To go back to the upper menu level. Press BACK.

To exit the setup menu. Press MENU again.

Radio options

Radio options can be set when DAB or FM is selected.

Auto Tune [DAB]: To update the DAB station list, perform the DAB auto tune again. Select 'Yes' to start DAB auto tune. To deactivate DAB auto tune, select 'No'.

Information [DAB]: You can display various information of the DAB station you are listening to. Channel: Channel and frequency (see the DAB frequency table in 'Specifications'). Multiplex Name: Ensemble label (up to 16 characters long).

Service Name: Station name. Programme Type: PTY label (see 'PTY (programme type)' in 'Specifications.'). Bit Rate: Bit rate. Signal Level: Displays the signal level of the DAB station you are listening to, ranging from 0 (no signal) to 100 (maximum signal).

Info. PTY [FM]: Displays the PTY label (see 'PTY (programme type)' in 'Specifications.'). Note: If there is no multiplex name or no service name, the space for the label or name will be blank.

DAB Manual Tune [DAB]: If DAB reception by DAB auto tune is poor, try manual tuning. Press SELECT ← or → to select the desired DAB channel, then press ENTER.

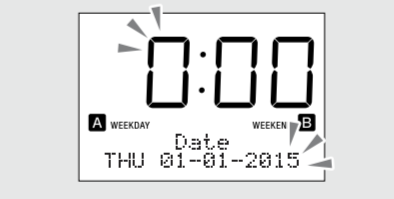
Tip: The radio starts tuning for receivable stations in the selected channel. The new station received by manual tuning is stored in the DAB station list.

Initialize [DAB FM]: Select 'OK' to initialize the radio to the factory default settings. All settings, DAB station list and presets will be deleted.

Other options

Turn off the radio before setting these options.

Set Date & Time: 'Auto' is set by default. This enables the clock to synchronize with the DAB data being received. To set the clock manually, press MENU and select 'Set Date & Time', then select 'Manual' and follow the steps below.



- 1 Press SELECT ← or → to select the year, and then press ENTER. 2 Repeat step 1 to set the month, day and time.

To go back to the previous item. Press BACK.

To cancel the clock setting. Press MENU again.

Note: If you do not press any button for about 1 minute while setting the clock, the clock setting mode will be cancelled.

Time Format

12H/24H: Select the clock display mode, 12-hour clock or 24-hour clock.

Date Format

The date display mode can be selected from 'DD-MM-YY', 'DD/MM/YY', 'MM-DD-YY', 'MM/DD-YY', 'YY-MM-DD', or 'YYMMDD'.

Beep

Select 'On' or 'Off'.

About the battery as a backup power source

This unit contains a CR2032 battery as a backup power source to keep the clock and the alarm operating during a power failure. (No Power No Problem System™)



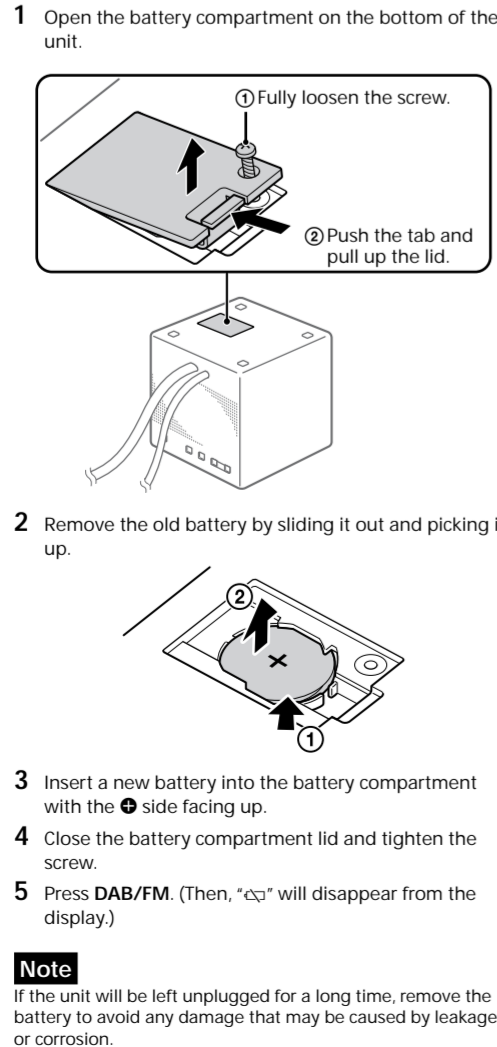
Notes on the alarm in the event of a power interruption

- The display will disappear. If the alarm sound is set to 'RADIO,' the buzzer will sound. If a power interruption occurs while the alarm is sounding, the buzzer will sound. If ALARM RESET/OFF is not pressed, the alarm will sound for about 5 minutes. If 'cc' appears on the display, the alarm will not sound in the event of a power interruption. Replace the battery if 'cc' appears. The snooze function will not work. During a power interruption, the alarm will sound only once at the set time.

When to replace the battery

When the battery is discharged, 'cc' appears on the display. If a power interruption occurs while the battery is discharged, the current time and alarm will be erased.

Replacing the backup battery



Before operating the unit, please read this guide thoroughly and retain it for future reference.

For customers in Europe: Register now for free updates at: www.sony.eu/mysony

WARNING

To reduce the risk of fire, do not cover the ventilation of the apparatus with newspapers, tablecloths, curtains, etc. Do not place lighted candles on the apparatus. Do not expose the unit to fire or electric shock, do not expose this apparatus to dripping or splashing, and do not place objects filled with liquids, such as vases, on the apparatus. Do not install the appliance in a confined space, such as a bookcase or built-in cabinet. Do not expose batteries or apparatus with battery-installed to excessive heat such as sunshine, fire or the like. As the main plug is used to disconnect the unit from the mains, connect the unit to an easily accessible AC outlet. Should you notice an abnormally in the unit, disconnect the main plug from the AC outlet immediately. The unit is not disconnected from the AC power source (mains) as long as it is connected to the wall outlet, even if the unit itself has been turned off. The nameplate and important information concerning safety are located on the bottom exterior.

WARNING ON LITHIUM BATTERY: Battery may explode if handled incorrectly. Do not recharge, disassemble or dispose of it in fire. Dispose of used battery promptly and in accordance with local environmental laws and guidelines. Keep away from children.

CAUTION

Danger of explosion if battery is incorrectly replaced. Replace only with the same type. Notice for customers: the following information is only applicable to equipment sold in countries applying EU directives. This product has been manufactured by or on behalf of Sony Corporation, 1-1-1 Konan Minato-ku Tokyo, 108-0075 Japan. Inquiries related to product compliance based on European Union legislation shall be addressed to the authorized representative, Sony Deutschland GmbH, Hedelfinger Strasse 61, 70327 Stuttgart, Germany. For any service or guarantee matters, please refer to the address provided in the separate service or guarantee documents.

CE

The validity of the CE marking is restricted to only those countries where it is legally enforced, mainly in the countries EEA (European Economic Area). Disposal of waste batteries and electrical and electronic equipment (applicable in the European Union and other European countries with separate collection systems): This symbol on the product, the battery or on the packaging indicates that the product and the battery shall not be treated as household waste. On certain batteries this symbol might be used in combination with a chemical symbol. The chemical symbols for mercury (Hg) or lead (Pb) are added if the battery contains more than 0.0005% mercury or 0.004% lead. By ensuring these products and batteries are disposed of correctly, you will help prevent potentially negative consequences for the environment and human health which could otherwise be caused by inappropriate waste handling. The recycling of the materials will help to conserve natural resources.

Precautions

- Operate the unit on the power sources specified in 'Specifications.'. Do not disconnect the power cord (mains lead), pull it out by the plug, nor the cord. Do not leave the unit in a location near a heat source, such as a radiator or air duct, or in a place subject to direct sunlight, excessive dust, mechanical vibration, or shock. Allow adequate air circulation to prevent internal heat build-up. Do not place the unit on a surface (a rug, blanket, etc.) or near materials (a curtain) that might block the ventilation holes. Should any solid object or liquid fall into the unit, unplug the unit and have it checked by a qualified personnel before operating it any further. To clean the casing, use a soft dry cloth. Do not use any type of solvent, such as alcohol or benzene, which may damage the finish. Make sure not to splash water on the unit. This unit is not waterproof.

NOTES ON LITHIUM BATTERY

- Dispose of used battery promptly. Keep the lithium battery out of reach of children. Should the battery be swallowed, consult a doctor immediately. Wipe the battery with a dry cloth to assure a good contact. Be sure to observe the correct polarity when installing the battery. Do not hold the battery with metallic tweezers, otherwise a short-circuit may occur. Do not expose the battery to excessive heat such as direct sunlight, fire or the like. If you have any questions or problems concerning your unit, please contact your nearest Sony dealer.

Troubleshooting

Should any problems persist after you have made the following checks, consult your nearest Sony dealer.

The alarm does not sound at the preset alarm time. Check that 'A' or 'B' appears on the display when the alarm is set. The radio is activated but no sound is emitted at the preset alarm time. Check the alarm volume setting.

Specifications

Time display: 24-hour system or the 12-hour system. Frequency range: DAB (Band-III): 174.928 MHz - 239.200 MHz. FM: 87.5 MHz - 108 MHz (0.05 MHz step).

DAB (Band-III) frequency table (MHz)

Table with 4 columns: Channel, Frequency, Channel, Frequency. Lists DAB frequency allocations.

Speaker: Approx. 4.0 cm dia., 8 Power output: 700 mW (at 10% harmonic distortion).

Power requirements: 230 V AC, 50 Hz. For clock back up: 3 V DC, one CR2032 battery. USB power output: USB port (DC OUT 5 V, 1.5 A).

Dimensions: Approx. 103.9 mm × 101.6 mm × 101.4 mm (W/H/D) including projecting parts and controls. Mass: Approx. 360 g, including the CR2032 battery.

PTY (programme type)

This function indicates services or RDS data in programme type, such as News or Sports, transmitted in the DAB or RDS data. If the received service or station does not transmit the programme type, 'No PTY' appears.

Table with 2 columns: Programme type, Display. Lists various music and information categories.

