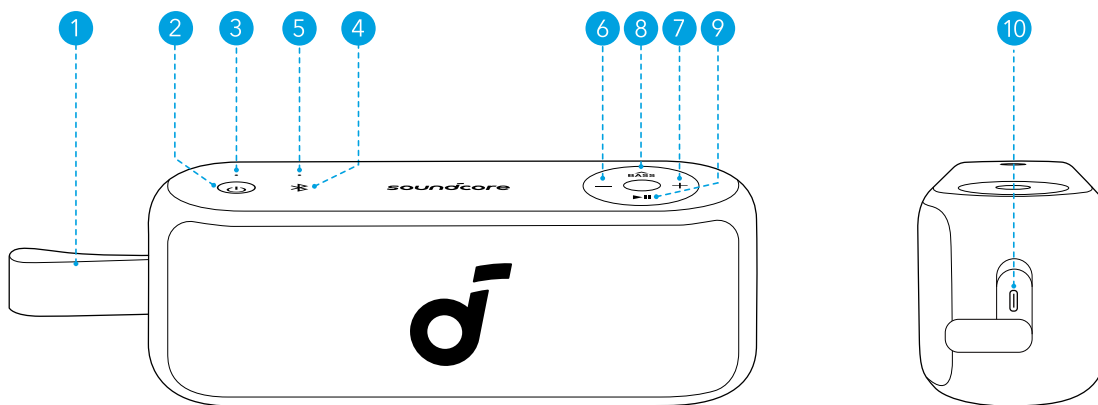


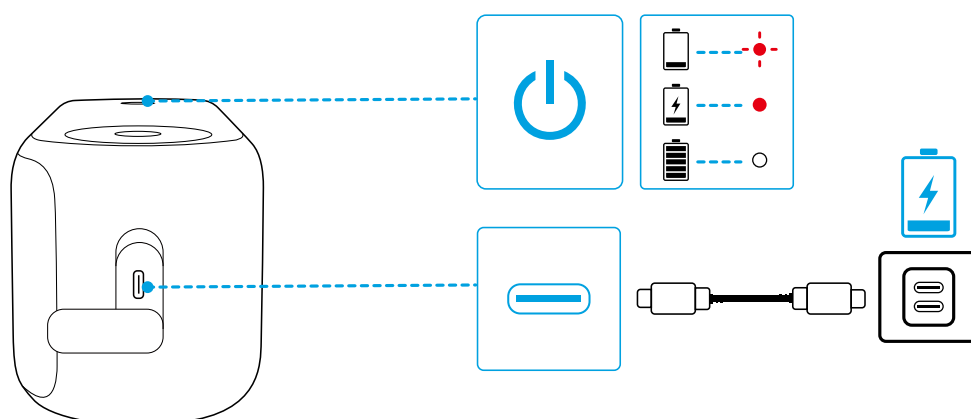
At a Glance



1	Strap	6	Volume Down Button
2	Power Button	7	Volume Up Button
3	Power LED	8	Play/Pause Button
4	Bluetooth Button	9	BassUP Button
5	Bluetooth LED	10	USB-C Charging Port

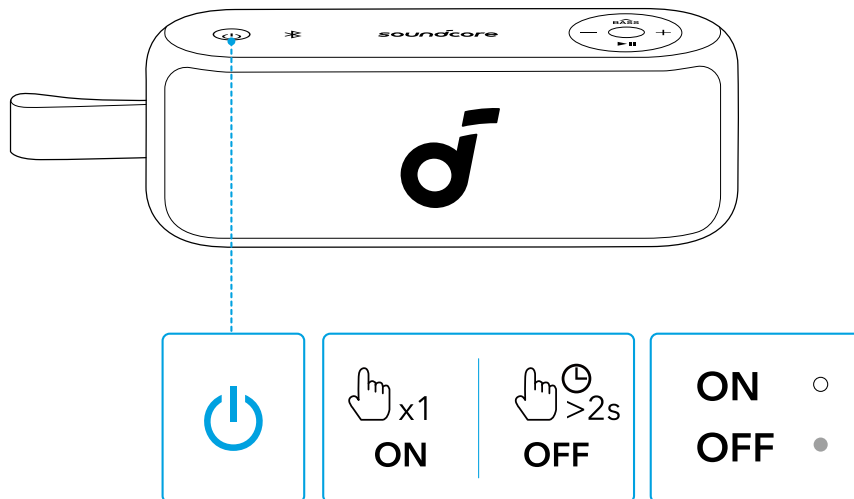
Charging Your Speaker

- Use a certified USB-C cable and charger to prevent any damage.



Flashing Red	Low Battery
Steady Red	Being Charged
Steady White	Fully Charged

Powering On / Off



	Press	Power On
	Steady White	
	Press and Hold for 2 Seconds	Power Off
	Light Off	

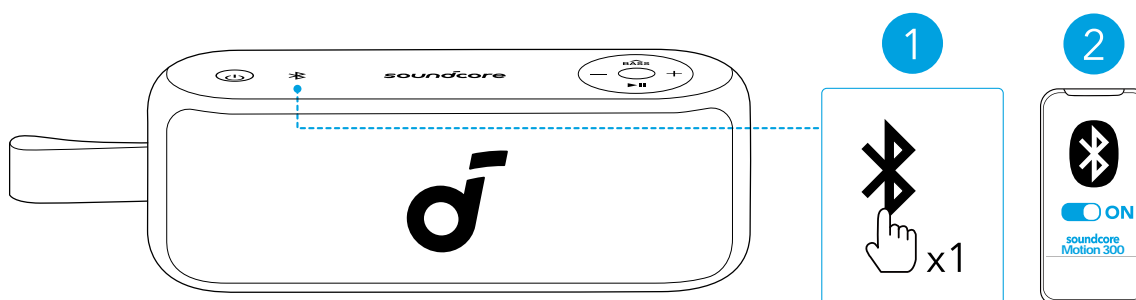


This speaker will power off automatically after 20 minutes if no device is connected.

Using Your Speaker

Bluetooth Mode

Press the Bluetooth button to enter Bluetooth pairing mode, then select "**soundcore Select 3**" from the Bluetooth list to connect.



	Press	Enter Bluetooth Pairing Mode
	Flashing Blue	Bluetooth Pairing
	Steady Blue	Bluetooth Connected



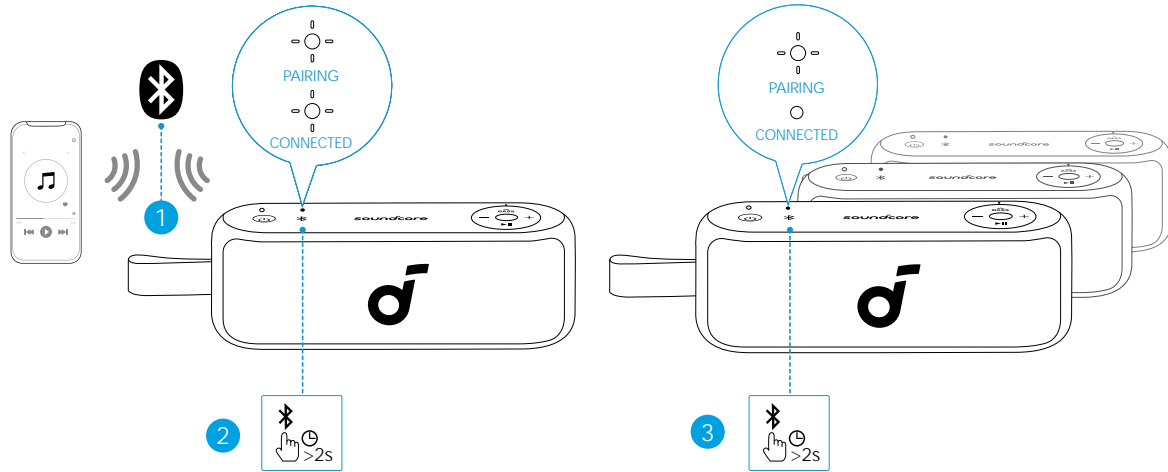
- To re-enter Bluetooth pairing mode, press the Bluetooth button once.
- This speaker can only play music on one mobile device at a time. To play from another connected device,

pause the device that's currently active first.

- Each time you power on your speaker, it will automatically connect to your last connected device if available within the Bluetooth range. If not, press the Bluetooth button to enter Bluetooth pairing mode.

PartyCast Mode

With one speaker connected to a smartphone, press and hold the Bluetooth button for 2 seconds on up to 100 soundcore speakers with PartyCast function to synchronize audio and light.



	Press	Enter / Exit PartyCast Pairing Mode
	Flashing White	PartyCast
	Flashing White (Primary Speaker)	PartyCast Connected
	Steady White (Secondary Speaker)	



Soundcore speakers with PartyCast function can also be connected with this speaker.

Button Controls

	Press or Press and Hold for 2 Seconds	Power On
	Press and Hold for 2 Seconds	Power Off
	Press	Play / Pause
	Press Twice	Next Track
	Press Three Times	Previous Track
	Press	Answer / End a Call
	Press and Hold for 2 Seconds	Reject a Call
	Press	Enter Bluetooth Pairing Mode
	Press and Hold for 2 Seconds	Enter / Exit PartyCast Pairing Mode
	Press	Volume Up / Down
	Press	Bass On/Off

soundcore App

Download the soundcore app to enhance your experience.



Google Play and the Google Play logo are trademarks of Google Inc.



Apple and the Apple logo are trademarks of Apple Inc.



Product information: Check the product name and software version, or read the user manual.

Firmware update: You will be informed once a new version of firmware is detected when you connect the speaker with the app.

Battery status: Indicates the remaining battery level of your speaker.

Volume control: Adjust the volume level via the app without pressing the buttons on the speaker.

EQ settings: There are various preset EQ settings you can choose from in the app to optimize your experience while enjoying different music genres.

- **soundcore Signature:** Standard EQ mode optimized for well-balanced sound.
- **Voice:** Voices stand out more clearly from other ambient sounds.
- **Balance:** No enhancement for high-frequency and low-frequency sounds.
- **Xtra Bass:** Enhance the low-frequency sound.

Set Auto-power off time: The speaker will automatically power off when time is up.

Voice prompt: Mute or restore the voice prompt while powering on/off.

Reset

Press and hold the Bluetooth button and volume up button simultaneously for at least 4 seconds to reset the speaker.

Specifications

Specifications are subject to change without notice.

DC Power Input	5V $\overline{\text{---}}$ 2A
Battery Capacity	2400mAh/7.3V
Audio Output Power	16W
Speaker Driver	1.5" Full Range x2
Charging Time	4 Hours
Play Time (varies by volume level and music content)	Up to 20 Hours
Waterproof Level	IPX7
Bluetooth Version	5.0
Bluetooth Range	100m / 328ft