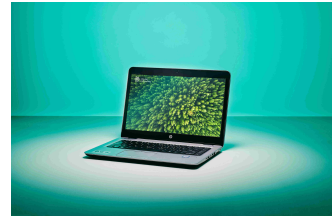


Circular Computing HP - EliteBook 840 G3 Laptop - 14" FHD (1920x1080) - Intel Core i5 6th Gen 6200U - 8GB RAM - 256GB SSD - Windows 10 Professional - Full UK (UK Layout) - Fully Tested Original Battery - IEEE 802.11ac Wireless LAN - 1 Year Advance Replacement Warranty - Remanufactured



Brand : Circular Computing

Product code: APIN-0000190

Product name : HP - EliteBook 840 G3 Laptop - 14" FHD (1920x1080) - Intel Core i5 6th Gen 6200U - 8GB RAM - 256GB SSD - Windows 10 Professional - Full UK (UK Layout) - Fully Tested Original Battery - IEEE 802.11ac Wireless LAN - 1 Year Advance Replacement Warranty - Remanufactured

- Guaranteed premium like new cosmetic condition
 - Enterprise grade performance and reliability
 - Backed by 1-3 year warranties
 - Each laptop is independently Certified Carbon Neutral
 - We plant 5 trees for each laptop delivered, helping people & making earth cooler
 - Remanufactured according to ISO8887 & ISO9001 quality criteria
 - Laptops are compliant for enterprise, education and public sector buyers on frameworks
- Circular Computing - HP - EliteBook 840 G3 Laptop - 14" FHD (1920x1080) - Intel Core i5 6th Gen 6200U - 8GB RAM - 256GB SSD - Windows 10 Professional - Full UK (UK Layout) - Fully Tested Original Battery - IEEE 802.11ac Wireless LAN - 1 Year Advance Replacement Warranty - Remanufactured



Circular Computing HP - EliteBook 840 G3 Laptop - 14" FHD (1920x1080) - Intel Core i5 6th Gen 6200U - 8GB RAM - 256GB SSD - Windows 10 Professional - Full UK (UK Layout) - Fully Tested Original Battery - IEEE 802.11ac Wireless LAN - 1 Year Advance Replacement Warranty - Remanufactured:

Certified carbon neutral remanufactured laptops from Circular Computing are the most sustainable option for your business, people & planet. Get the IT you need for less with guaranteed premium quality & performance backed by 1 to 3 year warranties. Because IT shouldn't cost the Earth.

Design		Ports & interfaces	
Product type *	Laptop	Combo headphone/mic port	✓
Product colour *	Silver	Docking connector	✓
Form factor *	Clamshell	Charging port type	DC-in jack
Refurbished	✓	USB Sleep-and-Charge	✓
Original brand name	HP	USB Sleep-and-Charge ports	1
Display		Keyboard	
Display diagonal *	35.6 cm (14")	Pointing device	Touchpad + Pointing Stick
Display resolution *	1920 x 1080 pixels	Keyboard layout	QWERTY
Touchscreen *	✗	Keyboard language	UK English
HD type	Full HD	Numeric keypad *	✗
Processor		Software	
Processor manufacturer *	Intel	Operating system installed *	Windows 10 Pro
Processor family *	Intel® Core™ i5	Processor special features	
Processor generation	6th gen Intel® Core™ i5	Enhanced Intel SpeedStep Technology	✓
Processor model *	i5-6200U	Intel Clear Video Technology	✓
Processor cores	2	Intel Flex Memory Access	✓
Processor boost frequency	2.8 GHz	Intel Trusted Execution Technology	✗
Processor frequency *	2.3 GHz	Intel Enhanced Halt State	✓
Processor cache	3 MB	Intel VT-x with Extended Page Tables (EPT)	✓
Processor cache type	Smart Cache	Intel TSX-NI	✗
Bus type	QPI	Intel Stable Image Platform Program (SIPP)	✗
Configurable TDP-up frequency	2.4 GHz	Intel Software Guard Extensions (Intel SGX)	✓
Configurable TDP-up	25 W	Intel 64	✓
Configurable TDP-down	7.5 W		
Configurable TDP-down frequency	0.8 GHz		

Memory		Processor special features	
Internal memory *	8 GB	Execute Disable Bit	✓
Internal memory type	DDR4-SDRAM	Idle States	✓
Memory form factor	SO-DIMM	CPU configuration (max)	1
Memory slots	2x SO-DIMM	Embedded options available	✗
Maximum internal memory *	32 GB	Graphics & IMC lithography	14 nm
Storage		Intel Virtualization Technology for Directed I/O (VT-d)	✓
Total storage capacity *	256 GB	Intel Identity Protection Technology version	1.00
Storage media *	SSD	Intel Smart Response Technology version	1.00
Optical drive type *	✗	Intel Stable Image Platform Program (SIPP) version	0.00
Card reader integrated	✓	Intel Secure Key Technology version	1.00
Graphics		Intel Small Business Advantage (SBA) version	1.00
Discrete graphics card model *	Not available	Intel TSX-NI version	1.00
On-board graphics card *	✓	Intel Virtualization Technology (VT-x)	✓
On-board GPU manufacturer	Intel	Conflict-Free processor	✓
Discrete graphics card *	✗	Battery	
On-board graphics card model *	Intel® HD Graphics 520	Battery capacity *	46 Wh
Audio		Security	
Audio system	Bang & Olufsen	Cable lock slot	✓
Number of built-in speakers	2	Smart card reader	✗
Speakers manufacturer	Bang & Olufsen	Trusted Platform Module (TPM)	✓
Built-in microphone	✓	Trusted Platform Module (TPM) version	2.0
Number of microphones	2	Certificates	
Camera		Certification	ISO 8887, ISO 9001, ISO 14001
Front camera	✓	Sustainability	
Front camera HD type	HD	Sustainability certificates	ENERGY STAR, EPEAT Gold
Network		Weight & dimensions	
Wi-Fi	✓	Width	337.8 mm
Top Wi-Fi standard *	Wi-Fi 5 (802.11ac)	Depth	237 mm
Mobile network connection *	✗	Height	18.8 mm
Ethernet LAN	✓	Weight *	1.48 kg
Bluetooth	✓	Ports & interfaces	
USB 3.2 Gen 1 (3.1 Gen 1) Type-A ports quantity *	2	USB 3.2 Gen 1 (3.1 Gen 1) Type-A ports quantity *	2
USB 3.2 Gen 1 (3.1 Gen 1) Type-C ports quantity *	1	USB 3.2 Gen 1 (3.1 Gen 1) Type-C ports quantity *	1
DisplayPorts quantity	1	DisplayPorts quantity	1
VGA (D-Sub) ports quantity	1	VGA (D-Sub) ports quantity	1



5060638771777

Disclaimer. The information published here (the "Information") is based on sources that can be considered reliable, typically the manufacturer, but this Information is provided "AS IS" and without guarantee of correctness or completeness. The Information is only indicative and can be changed at any time without notification. No rights can be based on the Information. Suppliers or aggregators of this Information do not accept any liability with regard to the content of (web)pages and other documents, including its Information. The publisher of the Information can not be held liable for the content of 3rd party websites that are linking this Information or are linked to from this Information. You as the User of the Information are solely responsible for the choice and usage of this Information. You are not entitled to transfer, copy or otherwise multiply or distribute the Information. You are obliged to follow the directions of the copyright owner(s) with regard to the use of the Information. Exclusively Dutch law is applicable. With regard to price and stock data on the site, the publisher followed a number of starting points, which are not necessarily relevant for your private or business circumstances. Therefore, the price and stock data are only indicative and are subject to changes. You are personally responsible for the way you use and apply this information. As a user of the Information or sites or documents in which this Information is included, you will adhere to standard fair use including avoidance of spamming, ripping, intellectual-property violations, privacy violations, and any other illegal activity.

Publication date: 19-NOV-2024. Prints or copies of Information are only valid on the printed Publication date