

**DDR4 GAMING** DELTA **RGB**



THE POWER FROM TEAM GROUP

T-FORCE | DELTA RGB

**T-FORCE GAMING DDR4**  
**DELTA RGB**

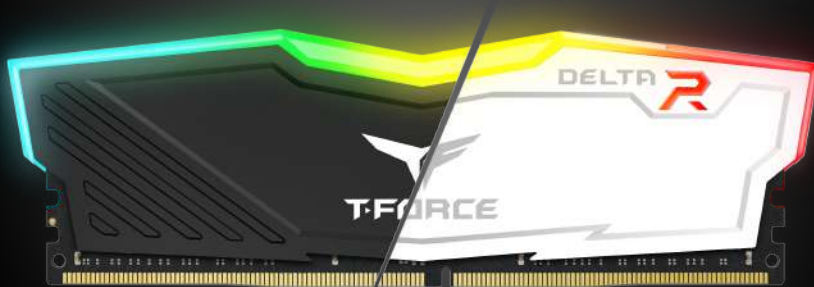


**Pursuing the perfect revolution**

TEAM GROUP T-FORCE gaming series once again released the all new luminous memory module – DELTA RGB. The R on the heat spreader represents Revolution, and also stands for creative concept with an uncompromised spirit. The heat spreader is built with lighter, thinner and high quality metal material. The colorful light changes make the hollow “R” on the front even more stereoscopic, and echo the ultra wide angle luminous area. The extraordinary Revolution will provide players a new experience never seen before.

## Full color, dazzling and 120° ultra wide angle force flow lighting effect

DELTA RGB is using full color, dazzling RGB LED lighting with force flow effect. Like a Jedi holding the lightsaber, players can be invincible in the gaming world. T-FORCE LOGO is like a warrior's badge, standing still in the changing lights. The full frame, 120° ultra wide angle luminous area at the top emits colorful bright light. The color of the light changes smoothly to provide players an unparalleled visual feast, no matter it is day or night.



## Asymmetric minimalist design

The one piece, geometric line design makes the heat spreader looks simple but energetic, and the Cubist style in the new art movement is also presented, which is a perfect combination of technology and aesthetics. The embossed lines on the surface not only increase the heat dissipation area and also effectively enhance cooling of the memory module, so the quality of the operation can be finely stabilized.

## T-FORCE DELTA RGB Gaming Memory Modules Supports Variety Kinds of Controlled Software

T-FORCE DELTA RGB memory module supports ASUS Aura Sync / GIGABYTE RGB Fusion 2.0 / MSI Mystic Light Sync / ASROCK-Polychrome Sync / BIOSTAR Advanced VIVID LED DJ software<sup>[1]</sup>. These lightning controlled software allows gamers to control lighting effects and lighting synchronization with T-FORCE DELTA RGB luminous memory module. It creates a unique, dazzling color aesthetics and offers a brilliant RGB system!



[1] For more details about how to control the lighting effect by the software(ASUS Aura Sync / GIGABYTE RGB Fusion 2.0 / MSI Mystic Light Sync / ASROCK-Polychrome Sync// BIOSTAR Advanced VIVID LED DJ ), please visit the official website of the software developer(ASUS/GIGABYTE/MSI/ASRock/BIOSTAR)

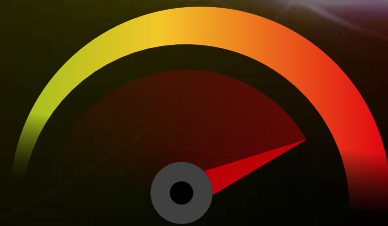
## The transmitting performance can be greatly increased with JEDEC RC 2.0

Using the latest customized JEDEC RC 2.0 circuit board to increase the distance between the power layer and the signal layer. Compared to ordinary memories, the transmitting signal is raised by 35%. There will be no interference between the power and the signal, and gets better performance. It completely releases the transmission of memory module, and offers players the ultimate sensation of overclocking and a highly stable overclocking memory module.



## XMP2.0 1 step overclocking technology

DELTA RGB series support Intel XMP 2.0. It is only one step away to experience the high speed sensation of overclocking.



## Ultra low working voltage Save energy up to 40%

With low working voltage 1.2-1.4V from DDR4 DELTA RGB, it is not only energy saving but it can also reduce the temperature and the heat generated to offer the high speed running memory a stable and long time operation.



## QVL approved by motherboard manufacturers

Multiple compatibility verifications with mainstream DDR4 motherboards to make sure its stability with all motherboards on the QVL(Qualified Vendor List). Therefore, you wouldn't have to worry about compatibility issues when purchasing high speed memory.



# Main Feature

- Full frame 120° ultra wide angle lighting
- Built in Force Flow RGB lighting effect
- Aluminum alloy heat spreader with asymmetric minimalist design
- Supports ASUS Aura Sync software synchronization
- Latest JEDEC RC 2.0 PCB
- Energy saving 1.2V~1.4V ultra low working voltage
- Supports XMP2.0 one click overclocking technology
- QVL approved by all mainstream motherboard manufacturers



# Specification

Module Type	288 Pin Unbuffered DIMM Non ECC					
Tested Speed	2666	2666	3000	3200	3200	3600
Tested Latency	CL16-18-18-38	CL18-18-18-43	CL16-18-18-38	CL16-18-18-38	CL16-20-20-40	CL18-22-22-42
Capacity	8GB 16GB 8GBx2 16GBx2	32GB 32GBx2	8GB 16GB 32GB 4GBx2 8GBx2 16GBx2 32GBx2	8GB 16GB 32GB 8GBx2 16GBx2 32GBx2	8GB 16GB 32GB 8GBx2 16GBx2 32GBx2	8GB 16GB 32GB 8GBx2 16GBx2 32GBx2
Data transfer bandwidth	21,300 MB/s (PC4 21300)	21,300 MB/s (PC4 21300)	24,000 MB/s (PC4 24000)	25,600 MB/s (PC4 25600)	25,600 MB/s (PC4 25600)	28,800 MB/s (PC4 28800)
Tested Voltage	1.2V	1.2V	1.35V	1.35V	1.35V	1.35V
Dimensions	49(H) x 147(L) x 7(W)mm					
Warranty	Lifetime Warranty					



# Ordering Information

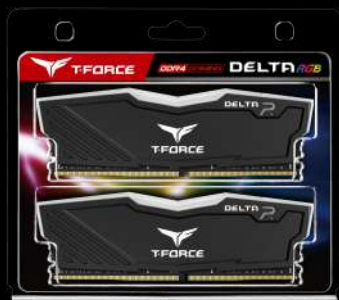


Color	Frequency	CAS Latency/Voltage	Capacity	Team P/N
BLACK	DDR4-2666(PC4-21300)	CL16-18-18-38 1.2V	8GB	TF3D48G2666HC16C01
			16GB	TF3D416G2666HC16C01
		CL18-18-18-43 1.2V	32GB	TF3D432G2666HC18H01
	DDR4-3000(PC4-24000)	CL16-18-18-38 1.35V	8GB	TF3D48G3000HC16C01
			16GB	TF3D416G3000HC16C01
			32GB	TF3D432G3000HC16C01
	DDR4-3200(PC4-25600)	CL16-18-18-38 1.35V	8GB	TF3D48G3200HC16C01
			16GB	TF3D416G3200HC16C01
			32GB	TF3D432G3200HC16C01
		CL16-20-20-40 1.35V	8GB	TF3D48G3200HC16F01
			16GB	TF3D416G3200HC16F01
			32GB	TF3D432G3200HC16F01
DDR4 3600(PC4 28800)	CL18-22-22-42 1.35V	8GB	TF3D48G3600HC18J01	
		16GB	TF3D416G3600HC18J01	
		32GB	TF3D432G3600HC18J01	



Color	Frequency	CAS Latency/Voltage	Capacity	Team P/N
WHITE	DDR4-2666(PC4-21300)	CL16-18-18-38 1.2V	8GB	TF4D48G2666HC16C01
			16GB	TF4D416G2666HC16C01
		CL18-18-18-43 1.2V	32GB	TF4D432G2666HC18H01
	DDR4-3000(PC4-24000)	CL16-18-18-38 1.35V	8GB	TF4D48G3000HC16C01
			16GB	TF4D416G3000HC16C01
			32GB	TF4D432G3000HC16C01
	DDR4-3200(PC4-25600)	CL16-18-18-38 1.35V	8GB	TF4D48G3200HC16C01
			16GB	TF4D416G3200HC16C01
			32GB	TF4D432G3200HC16C01
		CL16-20-20-40 1.35V	8GB	TF4D48G3200HC16F01
			16GB	TF4D416G3200HC16F01
			32GB	TF4D432G3200HC16F01
DDR4 3600(PC4 28800)	CL18-22-22-42 1.35V	8GB	TF4D48G3600HC18J01	
		16GB	TF4D416G3600HC18J01	
		32GB	TF4D432G3600HC18J01	

# Ordering Information



Color	Frequency	CAS Latency/Voltage	Capacity	Team P/N
BLACK	DDR4-2666(PC4-21300)	CL16-18-18-38 1.2V	8GBx2	TF3D416G2666HC16CDC01
			16GBx2	TF3D432G2666HC16CDC01
		CL18-18-18-43 1.2V	32GBx2	TF3D464G2666HC18HDC01
	DDR4-3000(PC4-24000)	CL16-18-18-38 1.35V	4GBx2	TF3D48G3000HC16CDC01
			8GBx2	TF3D416G3000HC16CDC01
			16GBx2	TF3D432G3000HC16CDC01
			32GBx2	TF3D464G3000HC16CDC01
			8GBx2	TF3D416G3200HC16CDC01
	DDR4-3200(PC4-25600)	CL16-18-18-38 1.35V	16GBx2	TF3D432G3200HC16CDC01
			32GBx2	TF3D464G3200HC16CDC01
			8GBx2	TF3D416G3200HC16FDC01
		CL16-20-20-40 1.35V	16GBx2	TF3D432G3200HC16FDC01
			32GBx2	TF3D464G3200HC16FDC01
	DDR4 3600(PC4 28800)	CL18-22-22-42 1.35V	8GBx2	TF3D416G3600HC18JDC01
			16GBx2	TF3D432G3600HC18JDC01
32GBx2			TF3D464G3600HC18JDC01	



Color	Frequency	CAS Latency/Voltage	Capacity	Team P/N
WHITE	DDR4-2666(PC4-21300)	CL16-18-18-38 1.2V	8GBx2	TF4D416G2666HC16CDC01
			16GBx2	TF4D432G2666HC16CDC01
		CL18-18-18-43 1.2V	32GBx2	TF4D464G2666HC18HDC01
	DDR4-3000(PC4-24000)	CL16-18-18-38 1.35V	4GBx2	TF4D48G3000HC16CDC01
			8GBx2	TF4D416G3000HC16CDC01
			16GBx2	TF4D432G3000HC16CDC01
			32GBx2	TF4D464G3000HC16CDC01
			8GBx2	TF4D416G3200HC16CDC01
	DDR4-3200(PC4-25600)	CL16-18-18-38 1.35V	16GBx2	TF4D432G3200HC16CDC01
			32GBx2	TF4D464G3200HC16CDC01
			8GBx2	TF4D416G3200HC16FDC01
		CL16-20-20-40 1.35V	16GBx2	TF4D432G3200HC16FDC01
			32GBx2	TF4D464G3200HC16FDC01
	DDR4 3600(PC4 28800)	CL18-22-22-42 1.35V	8GBx2	TF4D416G3600HC18JDC01
			16GBx2	TF4D432G3600HC18JDC01
32GBx2			TF4D464G3600HC18JDC01	

Above technical information is based on industry standard data and tested to be reliable. However, Team makes no warranty, either expressed or implied, as to its accuracy and assumes no liability in connection with the use of this product.

Team reserves the right to make changes in specifications at any time without prior notice.



Address: 3F., No.166, Jian 1st Rd., Zhonghe Dist.,  
New Taipei City 235, Taiwan (R.O.C.)  
Tel: +886-2-82265000 Fax: +886-2-82265808  
mail: sales@teamgroup.com.tw / rma@teamgroup.com.tw