



EPIC AIR SPORT  
ANC EARBUDS

We love that you are rocking JLab!  
We take pride in our products and fully stand behind them.



### YOUR WARRANTY

All warranty claims are subject to JLab authorization and at our sole discretion. Retain your proof of purchase to ensure warranty coverage.



### CONTACT US

Reach out to us at [support@jlab.com](mailto:support@jlab.com) or visit [jlab.com/contact](http://jlab.com/contact)

## REGISTER TODAY

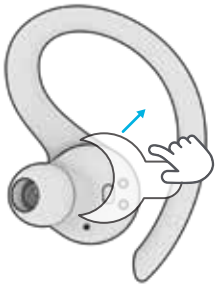
[jlab.com/register](http://jlab.com/register)

[Product updates](#) | [How-to tips](#)  
[FAQs & more](#)

## FIRST TIME SETUP

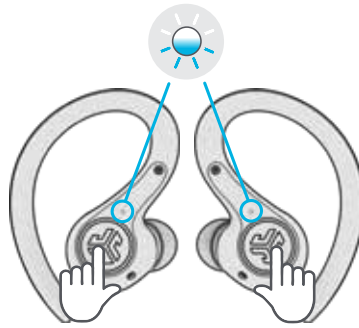
### 1 AUTO-CONNECTING EARBUDS

A. Take earbuds out of the charging case and remove stickers.



Remove stickers

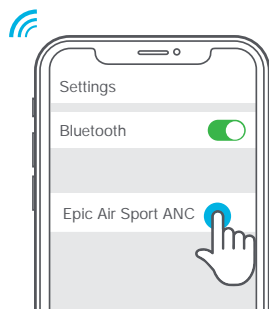
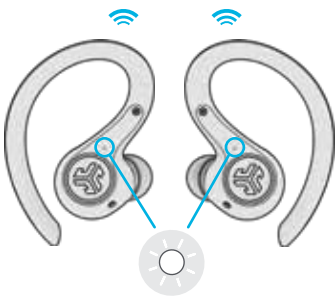
B. Press and hold 3+ seconds on each earbud. **Blinking blue and white light** on one earbud will indicate ready to pair to your device.



Press and hold  
3+ seconds

### 2 CONNECTING BLUETOOTH

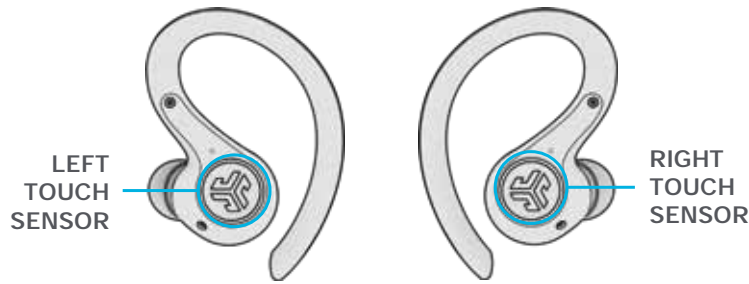
Select "Epic Air Sport ANC" in your device settings.  
Voice prompt "Bluetooth connected" followed by **solid white lights** will indicate you are connected.



### ADDING NEW / ADDITIONAL BLUETOOTH DEVICES:

Turn OFF Bluetooth from any previously connected device. Turn ON Bluetooth from new device. Take earbuds out of the case. Earbuds will automatically enter Bluetooth Pairing. Select "Epic Air Sport ANC" in new device settings to connect.

## CONTROLS



**VOLUME DOWN:** Single tap  
**SIRI (iOS) or "OK GOOGLE" (ANDROID):** Double tap  
**BE AWARE / ANC ON / ANC OFF:** Press & hold 1+ sec  
**EQ CHANGE:** Triple tap

**VOLUME UP:** Single tap  
**PLAY / PAUSE:** Double tap  
**TRACK FORWARD:** Press & hold 1+ sec  
**EQ CHANGE:** Triple tap

**ANSWER:** Single Tap Left or Right

**HANG UP:** Double Tap Left or Right

**REJECT INCOMING CALL:** Press and hold 1+ seconds Left or Right

## VOICE PROMPTS

**"JLab ON":** Power ON

**"Ready to Pair":**  
Epic Air Sport ANC is ready to pair to your Bluetooth device

**"Be Aware":** Hear your surroundings

**"Noise Canceling ON":**  
Noise canceling ON

**"Noise Canceling OFF":**  
Noise canceling OFF

**"Bluetooth Connected":**  
Earbud is connected to device

**"Battery Full":** 100-80%

**"Battery Medium":** 80-20%

**"Low Battery":** Less than 20%  
(When power decreases to 10%, "Low Battery" will play one time)

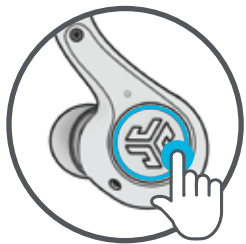
**"Goodbye":** Power OFF

**MUSIC / MOVIE MODE:** Press and hold both touch sensors simultaneously 3+ seconds.

**POWER OFF WITHOUT CHARGING CASE:** Turn off your Bluetooth from your device settings. The earbuds will then power off after 3 minutes.

## EQUALIZER MODES

Triple tap either earbud for different EQ settings. Voice prompts will indicate EQ settings (Epic Air Sport ANC will cycle 4 EQ settings) Customize each EQ setting by downloading the **JLab Air ANC App** in Apple/Google Play Store



**JLab SIGNATURE**  
JLab C3™ signature sound with amplified bass and vocals



**BALANCED**  
Even sound with no additional enhancements



**BASS BOOST**  
Amplified bass and sub-bass



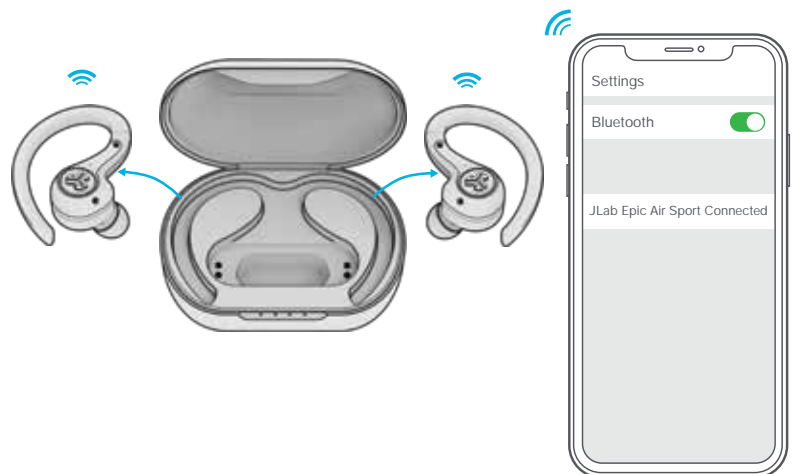
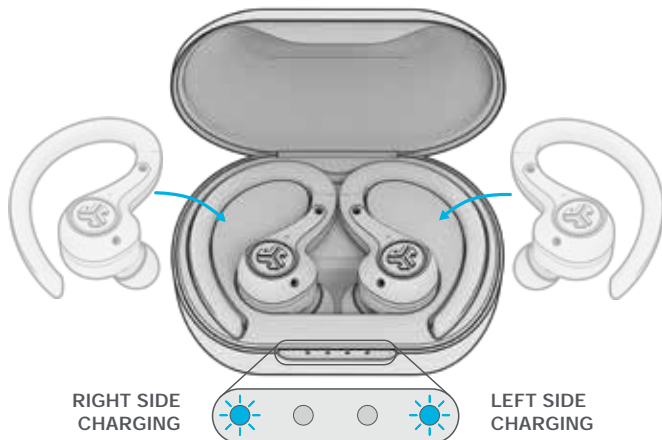
**BEEP**  
Custom EQ setting (download the JLab Air ANC App to customize)

## AUTO-POWER ON/OFF

**1** Placing the earbuds in the charging case will power OFF earbuds and start charging.

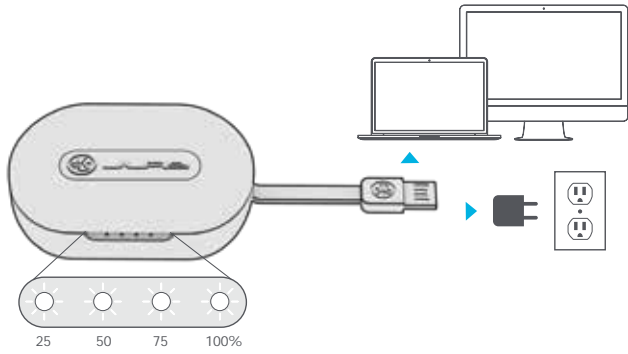
**Blue lights** indicate earbuds are charging and will turn off when fully charged.

**2** When taken out of the charging case, they will auto power ON and connect.



## WIRED CHARGING

Connect the Epic Air Sport ANC to computer or USB 5V 1A (or less) output device.

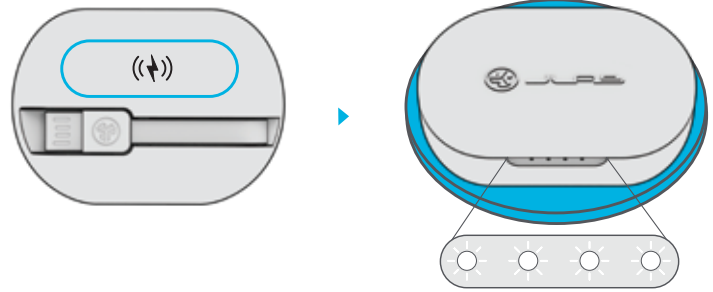


LEDs **pulse white** when charging and **turn solid white** when fully charged.

## WIRELESS CHARGING

Place the charging case on a wireless charging platform.

LEDs **pulse white** when charging and **turn solid white** when fully charged.

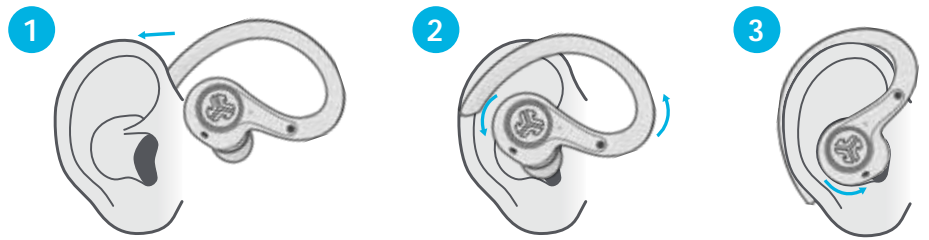


## FITTING

Try all ear tips for best fit and proper seal.



Place in the ear canal and slightly rotate to adjust for best fit.



## FIND YOUR EARBUDS

Download the Tile app and activate to find your earbuds.

Learn more at [jlab.com/tileapp](https://jlab.com/tileapp)

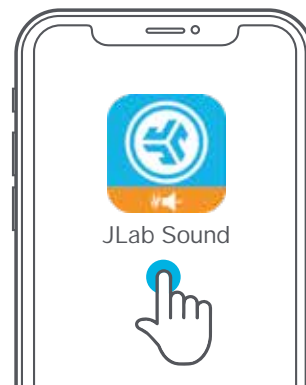
*Activating Tile will reduce earbud playtime.*



## DOWNLOAD THE APP

Customize Epic Air Sport ANC features and update the latest software.

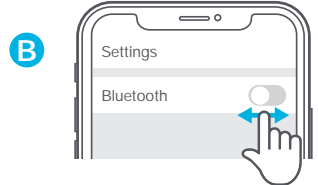
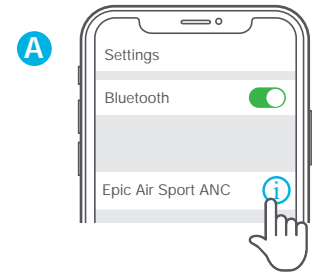
Download the JLab Sound App in Apple/Google Play Store.



## TROUBLESHOOTING

### NO AUDIO IN ONE EARBUD OR EARBUDS ARE DISCONNECTED (MANUAL RESET)

- 1 Enter your Bluetooth device settings and forget the Epic Air Sport ANC. Fig **A**
- 2 Keep the earbuds in the charging case and on **ONE** earbud **quickly tap the touch sensor 7x times**. Light blinks blue 4 times. Fig **C**
- 3 Repeat with other earbud. **Quickly tap the touch sensor 7x times**. Light blinks blue 4 times. Fig **C**
- 4 Take both earbuds out of the charging case. Wait for one earbud to turn **solid white** and one to **blink blue/white**. You are now ready to pair to your Bluetooth device.



Quick 7x times

### BLUETOOTH DEVICE DOES NOT CONNECT/RECONNECT

- 1 Enter your Bluetooth device settings and forget the Epic Air Sport ANC. Fig **A**
- 2 Turn OFF then ON Bluetooth. Fig **B**
- 3 Take the earbuds out of the case. Wait for one to turn **solid white** and one to **blinking blue/white**.
- 4 Select "Epic Air Sport ANC" in device settings to reconnect.

Instructional videos at: [JLAB.COM/MANUALS](https://www.jlab.com/manuals)

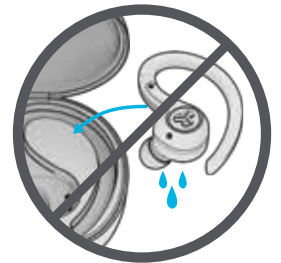
## QUICK TIPS

- The left or right earbud can be used independently for music and phone calls. Simply choose one and take out from the case to connect.
- Only ONE Bluetooth device can be connected at a time. Turn off Bluetooth on unwanted devices and turn on Bluetooth on chosen device to connect.
- Fully dry off earbuds before putting in the charging case to avoid any damage to the case.

## WARNING

**Fully dry off the earbuds before placing in the charging case.**

If the earbuds are damp or wet, this will cause damage to the charging case. The warranty will be voided if the charging case shows damage by water/sweat.



## CAUTIONS

- Avoid extreme heat, cold, and humidity.
- Avoid dropping or crushing the earbuds.
- Wax may build up in the earbud tips, lowering the sound quality. Carefully remove the wax with a cotton swab or other small tool to improve the sound quality.
- If you experience discomfort or pain, try lowering the volume or discontinuing use temporarily.
- If you experience regular discomfort while using this product, discontinue use and consult your physician.
- We recommend you treat your earbuds as you would a nice pair of sunglasses and keep them in safe location when not in use.



[Shop products](#) | [Product alerts](#) | [Burn-in your headphones](#)

JLab Store + Burn-in Tool

