

USB DVI Dual View HDBaseT™ 2.0 KVM Extender (1920 x 1200 @100 m) CE624

- The ATEN CE624 USB DVI Dual View HDBaseT™ 2.0 KVM Extender integrates the latest HDBaseT™ 2.0 technologies to provide the most reliable transmission of video, audio, USB and RS-232 signals available on the market. The CE624 delivers high-quality DVI Dual View video, PCM 2-channel digital audio, USB 2.0 and RS-232 signals up to 100 meters from the source computer using a single Cat6/6a cable. With a simple cable installation supporting various signals, the CE624 is ideal for applications where convenient remote access is required – in places such as transportation control centers, medical facilities, industrial warehouses and extended workstations.

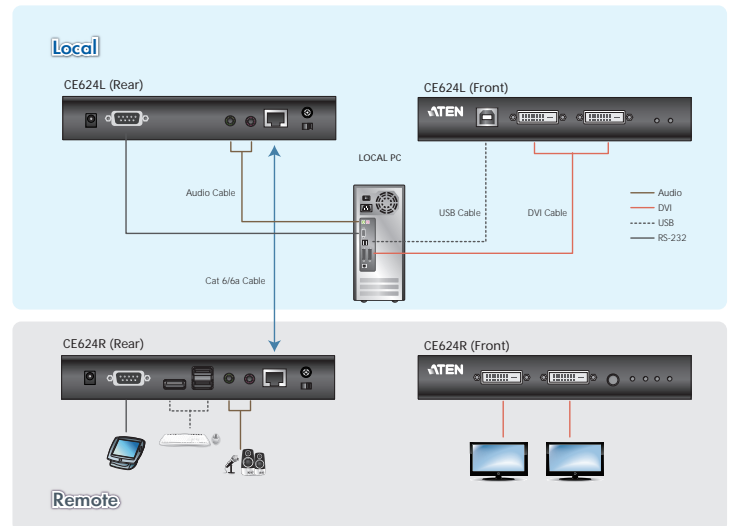
 Extension
100 m



Features

- Allows DVI Dual View access to a computer and KVM control from a remote console
- HDBaseT™ 2.0 connectivity technology
 - Extends video, audio, USB and RS-232 signals via a single Cat6/6a cable
 - EDID Buffer for smooth power-up and the highest quality display
 - Enhanced bit error detection and correction to resist signal interference during high-quality video transmissions
- Long distance superior video quality
 - HDBaseT™ Standard mode up to 1920 x 1200 @ 100 m
 - HDBaseT™ Long Reach mode up to 1920 x 1080 @ 150 m*
- Long Reach mode switch — switches between HDBaseT™ Standard and Long Reach modes in a snap
- Integrated USB 2.0 ports — ensuring fast transmission speeds for keyboard, mouse and peripherals
- Supports 2-channel PCM digital audio — ensuring high-quality audio transmissions
- Supports PC Wakeup function via pushbutton or hotkey
- Built-in 8KV/15KV ESD protection (Contact voltage 8KV; Air voltage 15KV)
- HDCP 2.2 compatible

*Note: This is only supported when single view is applied. In dual-view applications, the resolution will be reduced to 720p.



Specifications

Function	CE624L	CE624R
Connectors		
Console Ports	N/A	2 x DVI-D Female (White) 3 x USB Type A Female (White) 1 x Mini Stereo Jack Female (Green) 1 x Mini Stereo Jack Female (Pink)
KVM Ports	2 x DVI-D Female (White) 1 x USB Type B Female (White) 1 x Mini Stereo Jack Female (Green) 1 x Mini Stereo Jack Female (Pink)	N/A
RS-232	1 x DB-9 Female (Black)	1 x DB-9 Male (Black)
Power	1 x DC Jack with locking	1 x DC Jack with locking
Sub / Main	1 x RJ-45 Female (Black)	1 x RJ-45 Female (Black)
LEDs		
Link	1 (Orange)	1 (Orange)
Power	1 (Green)	1 (Green)
Video Output	N/A	2 (Orange)
Switches		
Long Reach Mode Switch	1 x Slide Switch	1 x Slide Switch
Firmware Upgrade	1 x Slide Switch	1 x Slide Switch
Pushbuttons		
Wakeup button	N/A	1 x Push button
Video	Up to 1600 x 1200 & 1920 x 1200 @ 90 m (Cat 5e) / 100 m (cat 6/6a)	Up to 1600 x 1200 & 1920 x 1200 @ 90 m (Cat 5e) / 100 m (cat 6/6a)
	1080P @ 100 m	1080P @ 100 m
Power Consumption	DC 5 V, 5.5 W	DC 5 V, 12.2 W
Environmental		
Operating Temperature	0° to 40° C	0° to 40° C
Storage Temperature	- 20° to 60° C	- 20° to 60° C
Humidity	0 - 80% RH, Non-condensing	0 - 80% RH, Non-condensing
Physical Properties		
Housing	Metal	Metal
Weight	1.61 kg	1.61 kg
Dimensions (L x W x H)	17.42 x 15.94 x 2.88 cm	17.42 x 15.94 x 2.88 cm

