

# OptiPlex Thin Client

## Accessories Installation Guide

## Notes, cautions, and warnings

 **NOTE:** A NOTE indicates important information that helps you make better use of your product.

 **CAUTION:** A CAUTION indicates either potential damage to hardware or loss of data and tells you how to avoid the problem.




 **WARNING:** A WARNING indicates a potential for property damage, personal injury, or death.

# Contents

<b>Chapter 1: Before you begin .....</b>	<b>4</b>
<b>Chapter 2: OptiPlex Thin Client Vertical Stand.....</b>	<b>5</b>
<b>Chapter 3: OptiPlex Thin Client Wall Mount.....</b>	<b>8</b>
<b>Chapter 4: OptiPlex Thin Client Pro-2 E Series Monitor Mount.....</b>	<b>14</b>
<b>Chapter 5: OptiPlex Thin Client Dual Vesa Mount.....</b>	<b>22</b>
<b>Chapter 6: OptiPlex Thin Client All-in-One Stand - MFS22.....</b>	<b>25</b>
<b>Chapter 7: Getting help.....</b>	<b>31</b>
Contacting Dell.....	31

# Before you begin

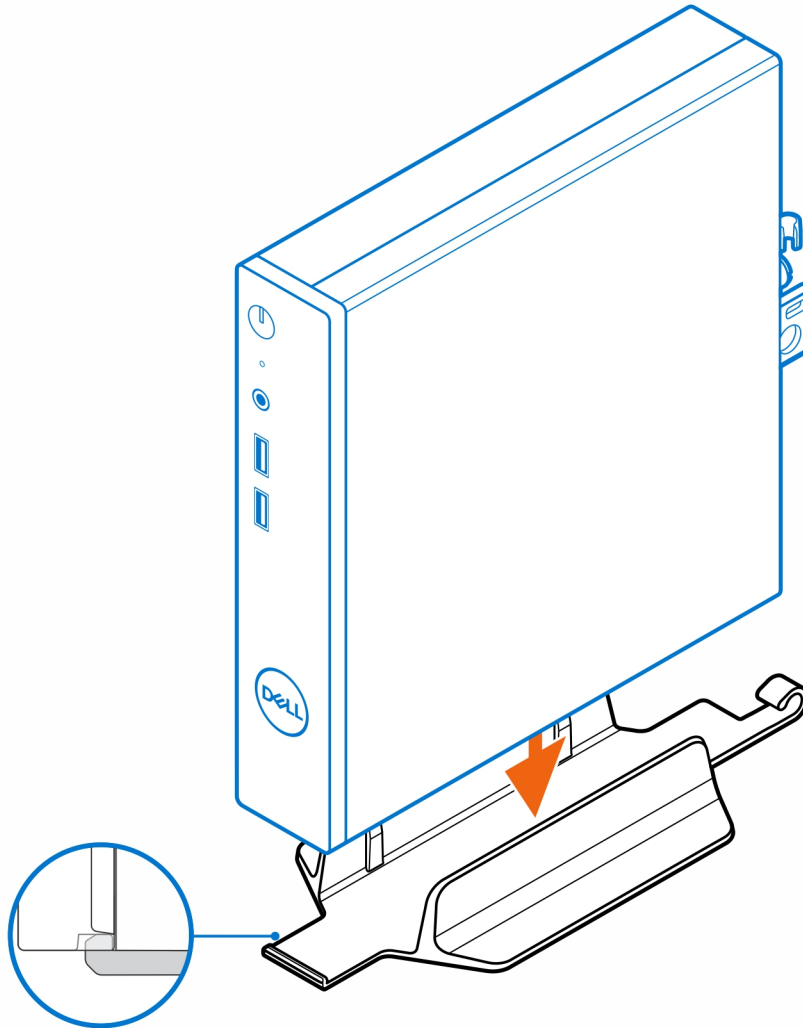
## Steps

1. Save and close all open files and exit all open applications.
2. Shut down your system: Click **Start** >  **Power** > **Shut down** .
  -  **NOTE:** If you are using a Linux operating system, see the documentation of your operating system for shut-down instructions.
3. Disconnect your system and all attached devices from their electrical outlets.
4. Disconnect all attached network devices and peripherals, such as keyboard, mouse, and monitor from your system.
  -  **CAUTION:** To disconnect a network cable, first unplug the cable from your system and then unplug the cable from the network device.
5. If the system unit or the adapter is being installed on the monitor:
  - a. Disconnect the power and all the display cables from the monitor.
  - b. Remove the stand from the monitor and place the monitor on a clean and soft surface.

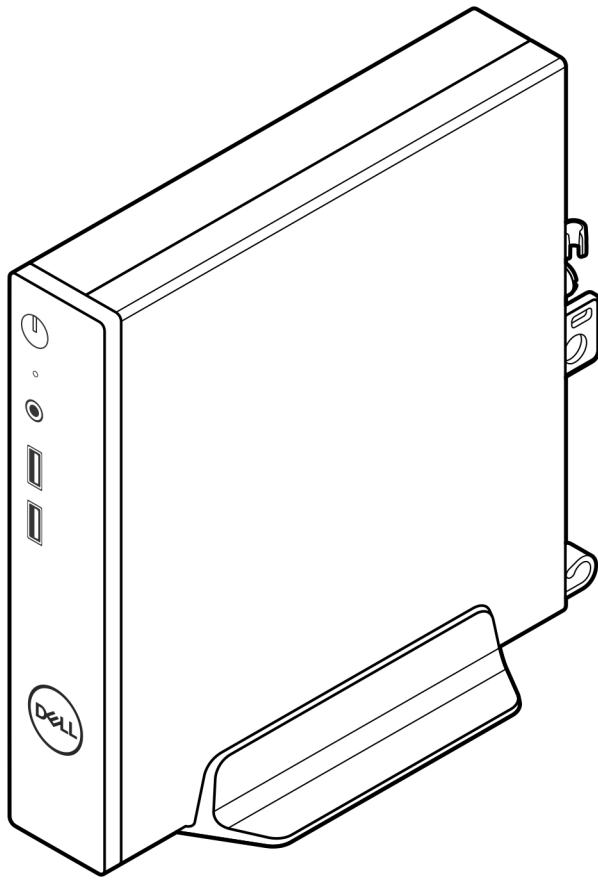
# OptiPlex Thin Client Vertical Stand

## Steps

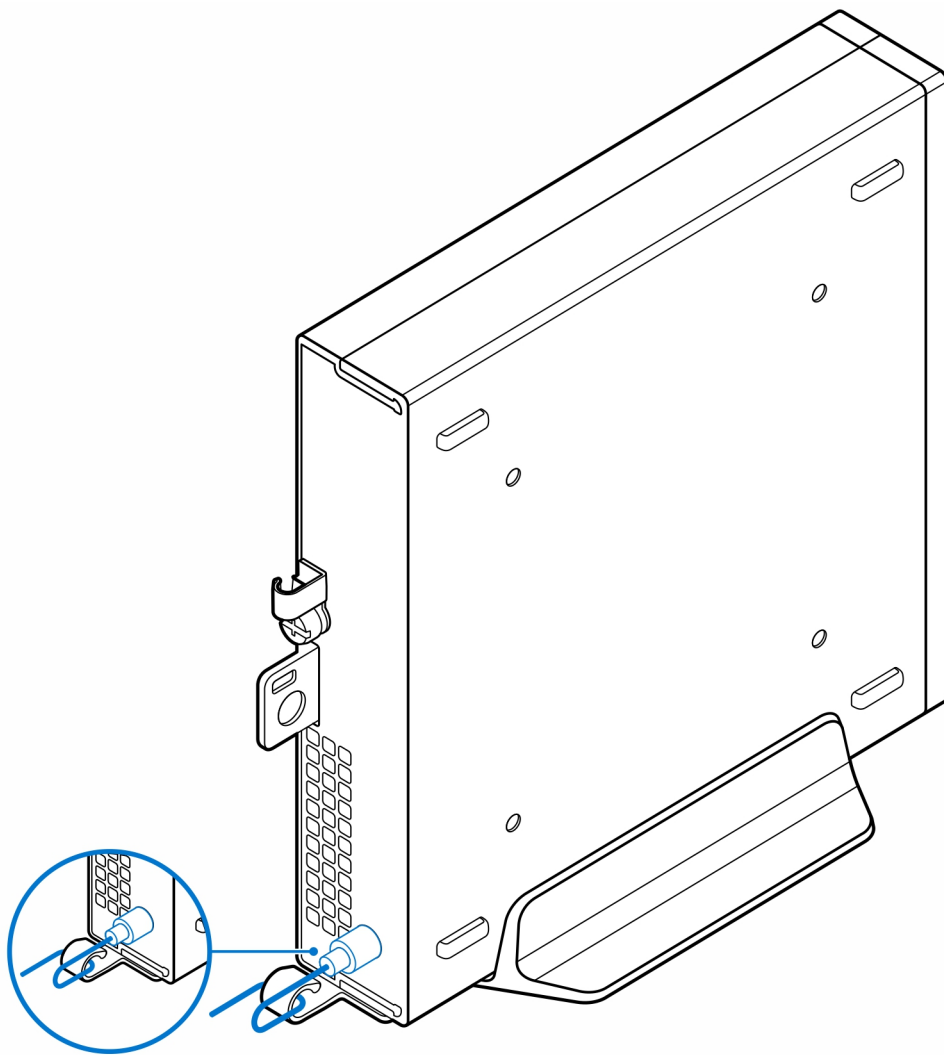
1. Follow the instructions in [Before working inside your computer](#).
2. Align the slot on the chassis with the tab on the vertical stand and place the computer on the vertical stand.



**i** **NOTE:** Ensure to align the slot on the chassis with the tab on the vertical stand to prevent the computer from sliding out of the vertical stand.



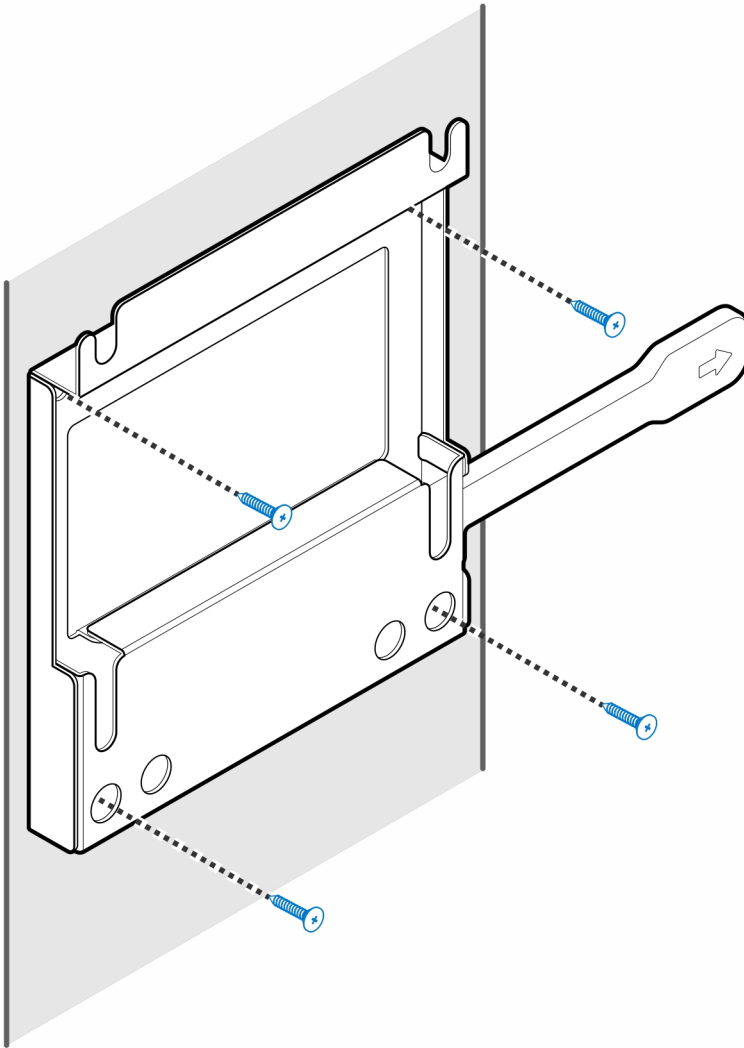
3. Route the power cable through the hook on the vertical stand to prevent accidental disconnection of the power cable.



# OptiPlex Thin Client Wall Mount

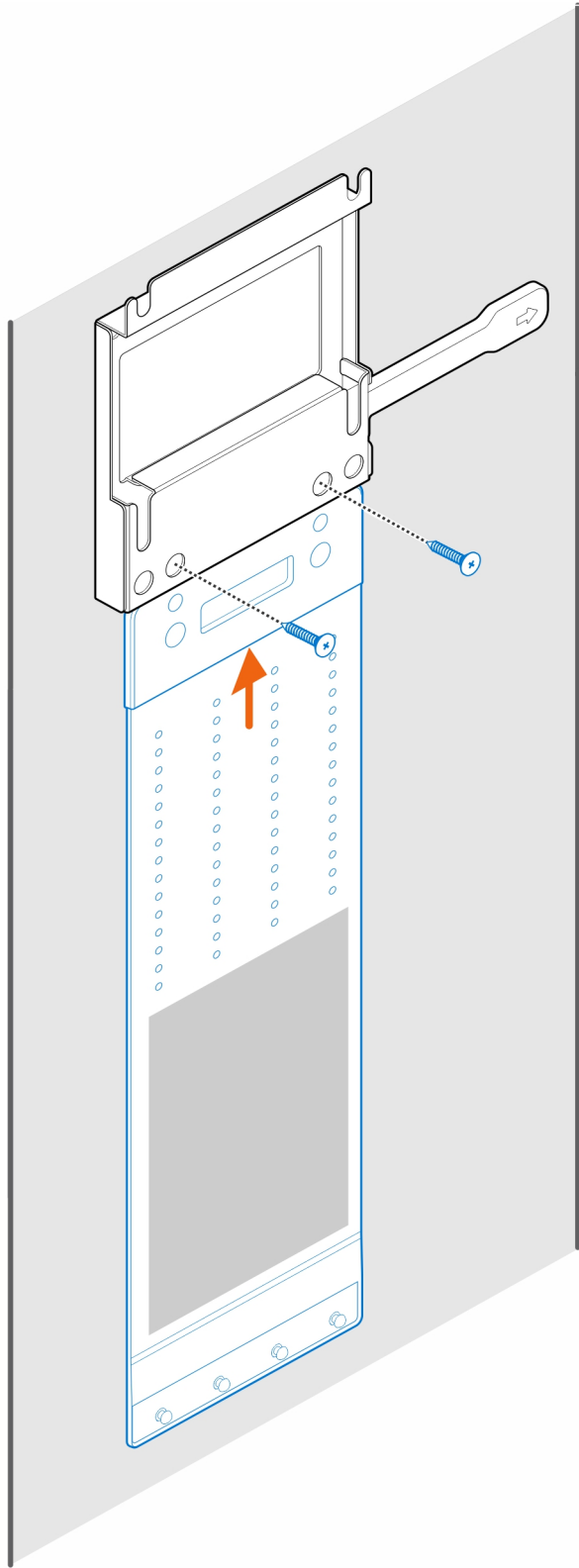
## Steps

1. Follow the instructions in [Before working inside your computer](#).
2. Place the VESA mount on the wall.
3. Install the four self-tapping screws (M4x13) to secure the VESA mount to the wall.

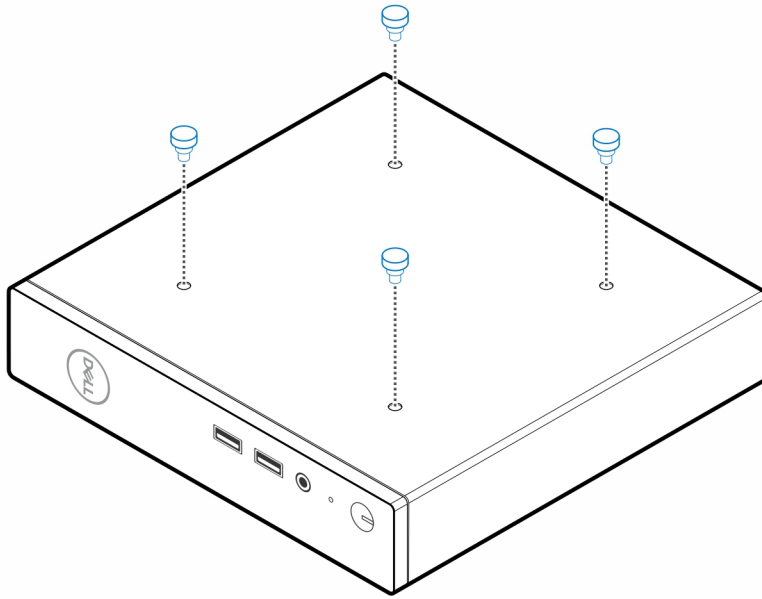


4. Install the two screws (M3x6) to secure the AC adapter sleeve to the VESA mount.

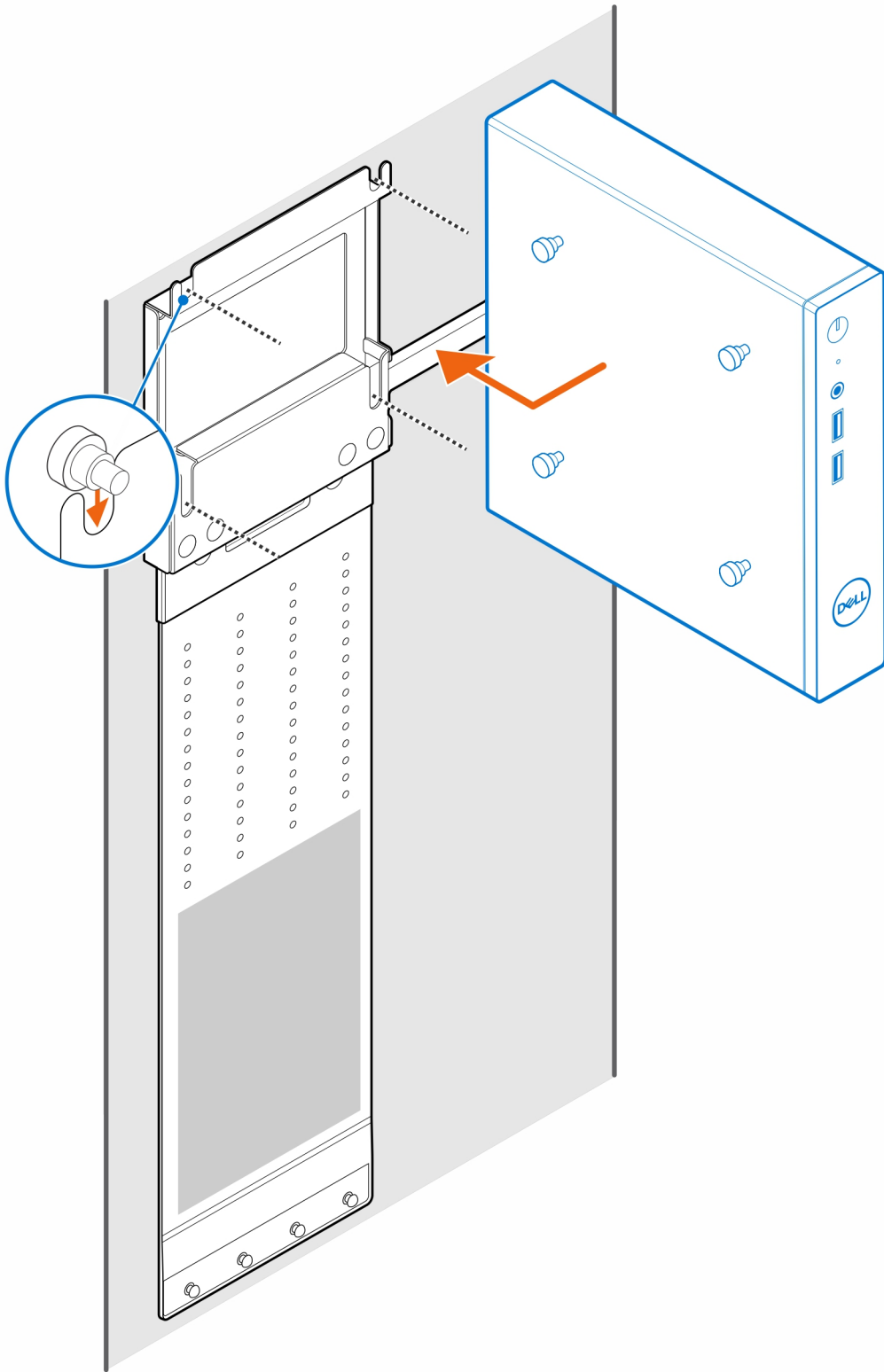




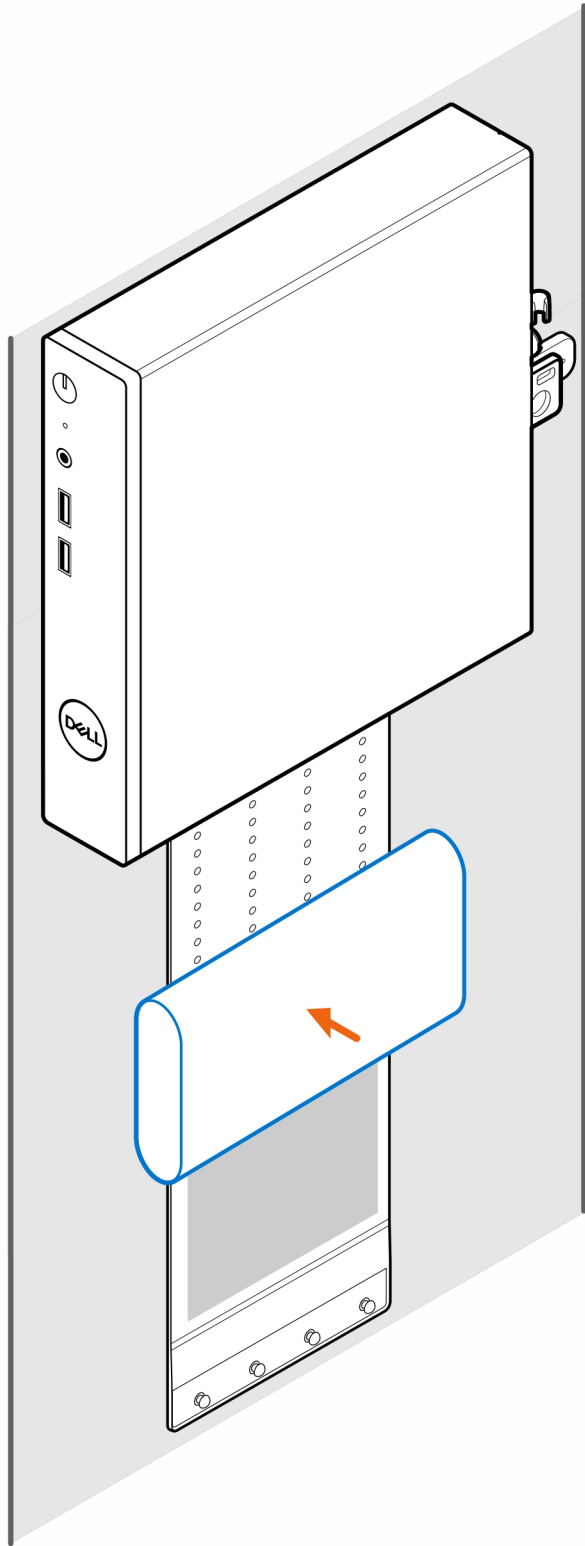
5. Install the four step screws (M4x4) on the chassis.



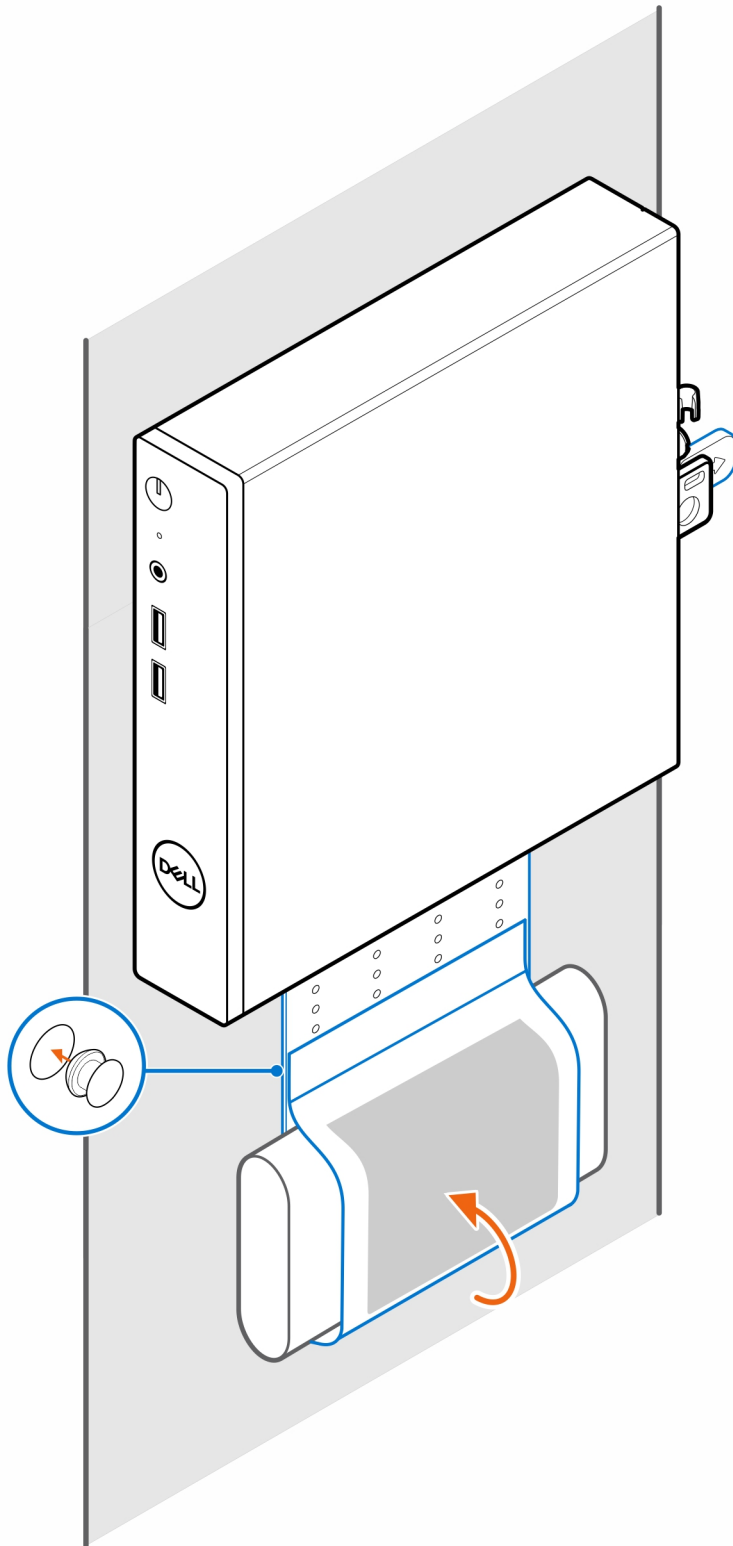
6. Align the step screw (M4x4) with the notches on the wall mount and mount the computer on the wall mount.



7. Place the AC adapter on the AC adapter sleeve.



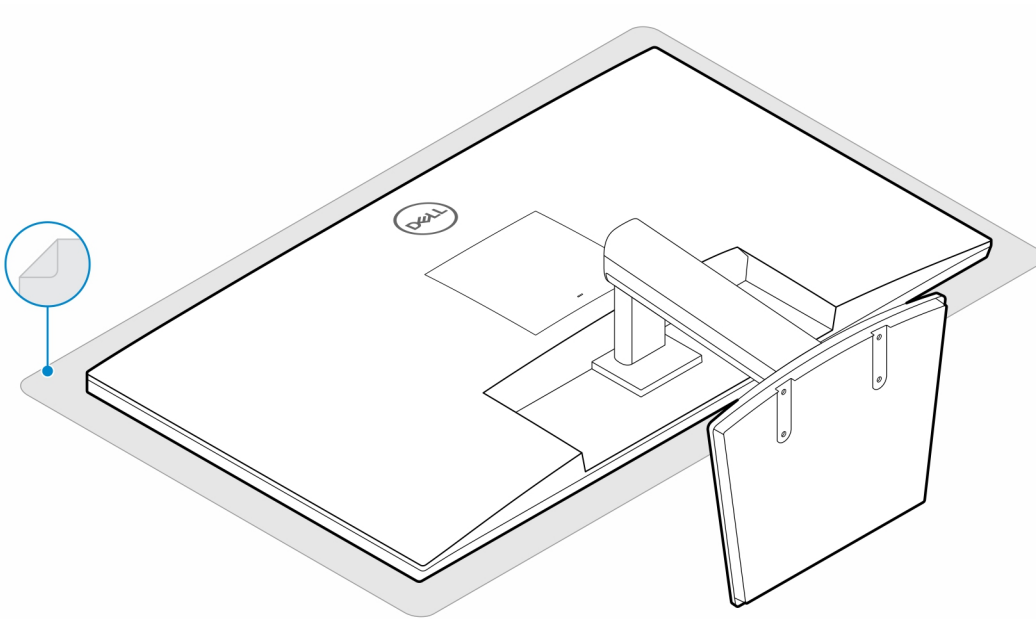
8. Wrap the sleeve around the AC adapter and insert the retaining tabs into the holes on the AC adapter sleeve at an appropriate level.



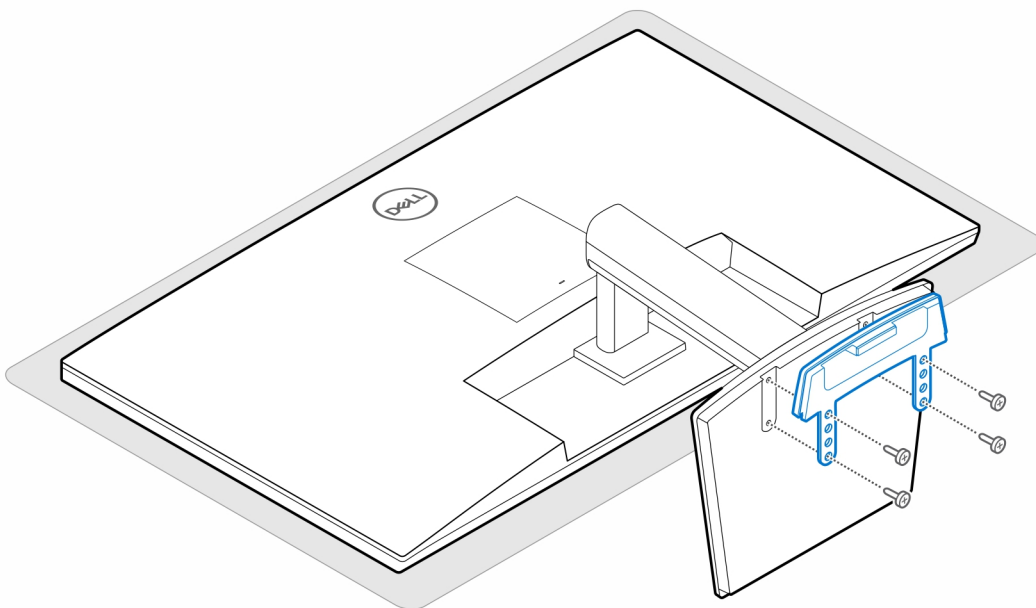
# OptiPlex Thin Client Pro-2 E Series Monitor Mount

## Steps

1. Follow the instructions in [Before working inside your computer](#).
2. Place the monitor on a soft cloth or cushion.

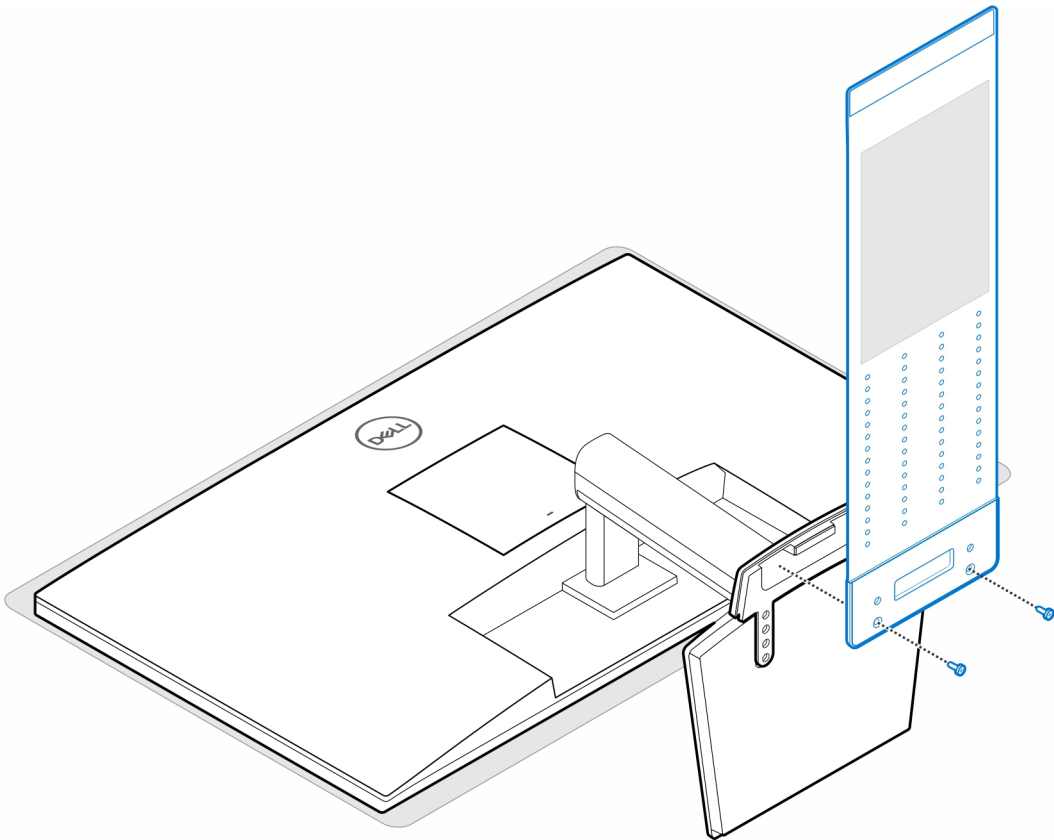


3. Install the four screws (M2.5x7) to secure the extender to the monitor stand.

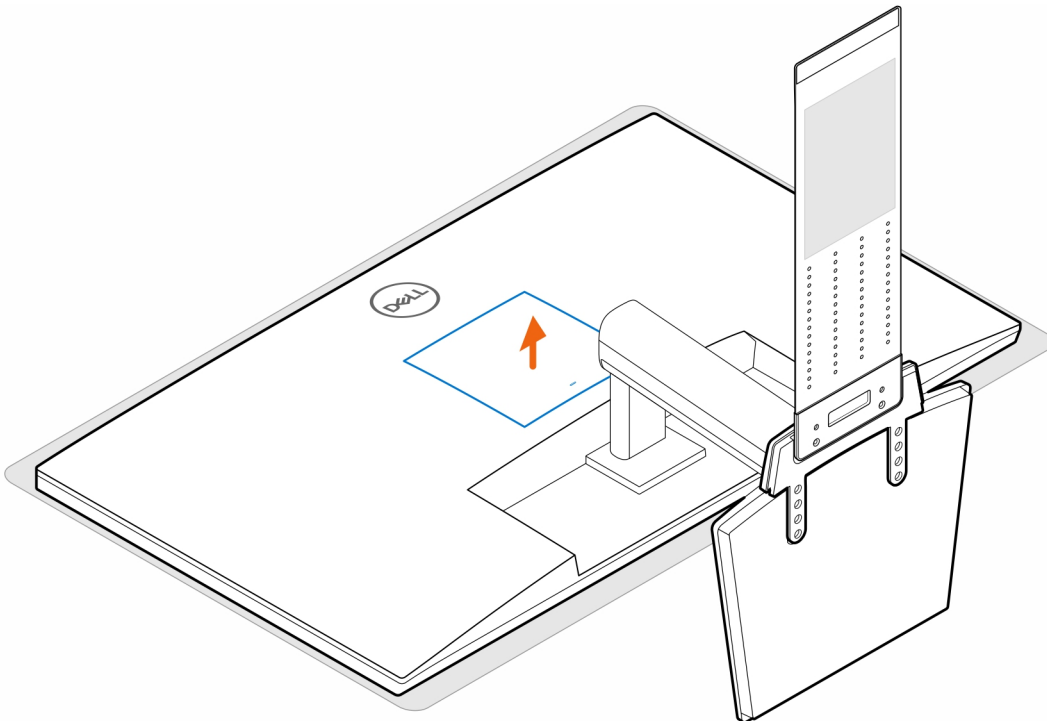


4. Install the two screws (M3x6) to secure the AC adapter sleeve (upsell) to the extender plate.

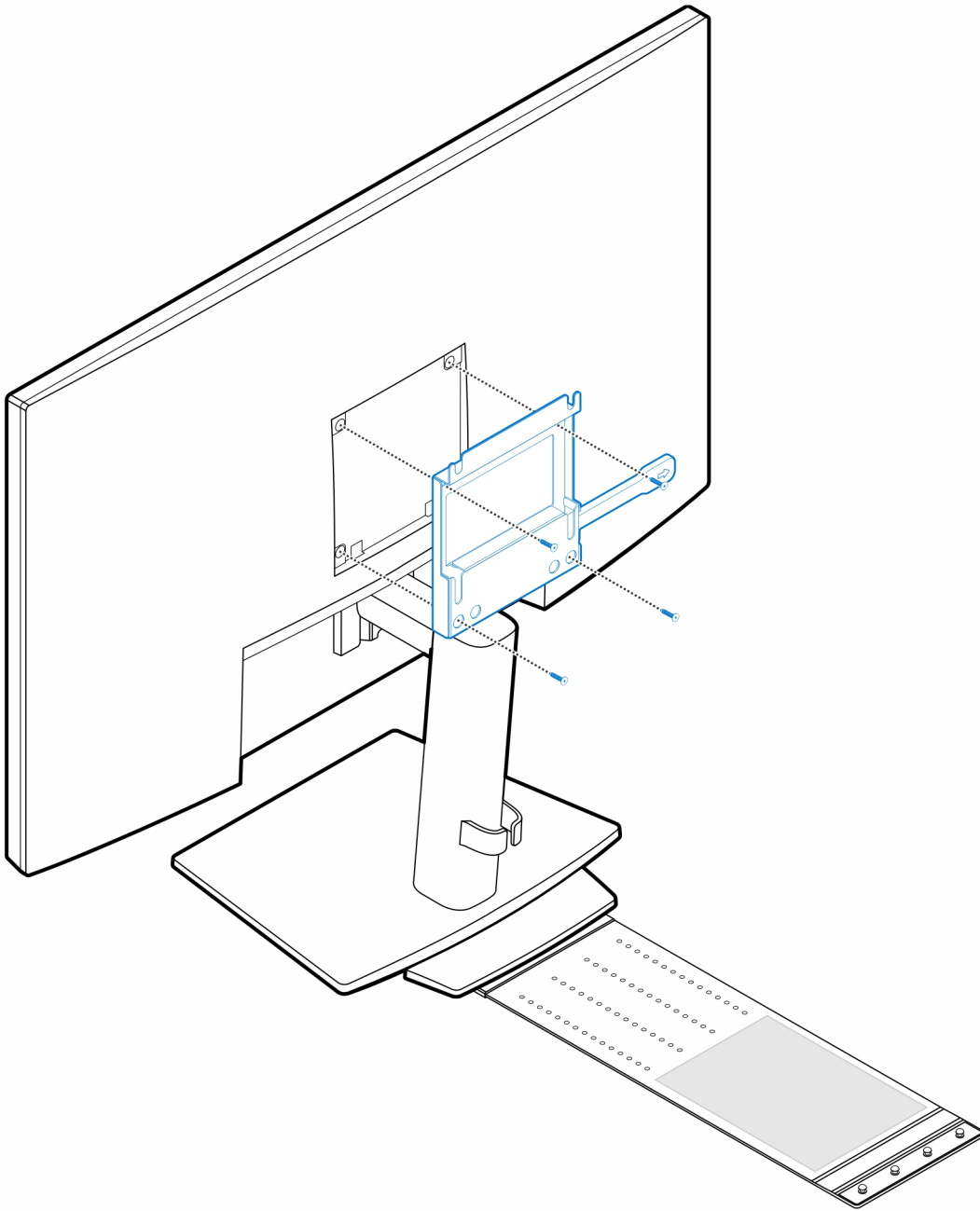
**i** **NOTE:** The AC adapter sleeve is an optional component that needs to be purchased separately.



5. Remove the monitor back cover.

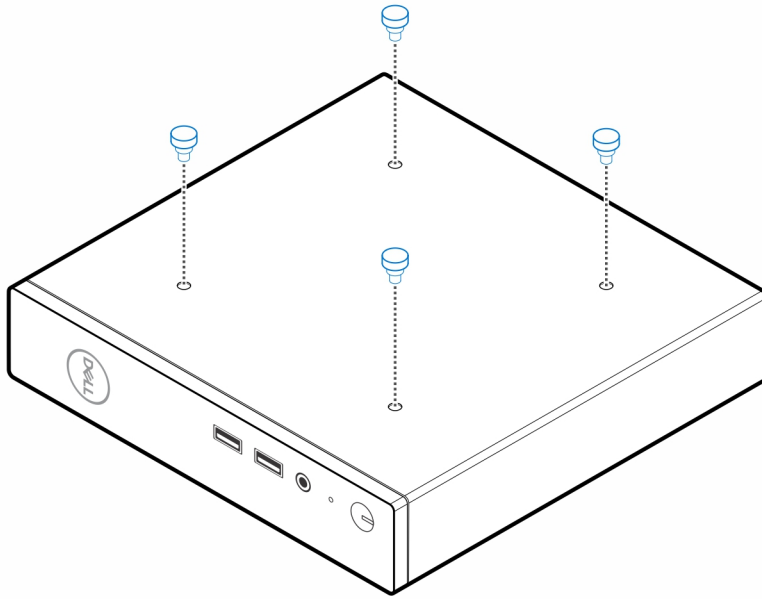


6. Install the four screws (M4x10) to secure the VESA mount to the monitor.

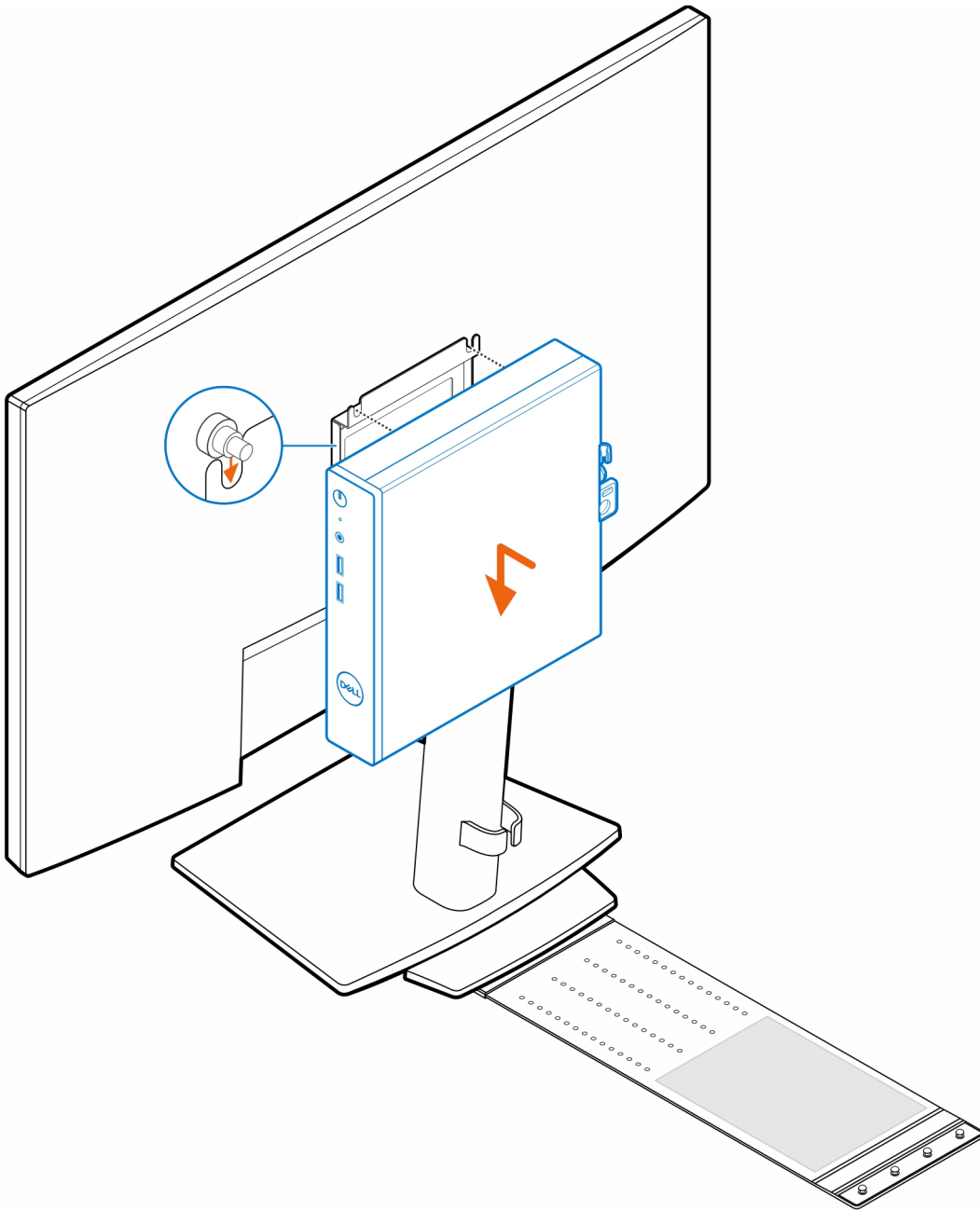


7. Install the four step (M4x4) screws on the chassis.

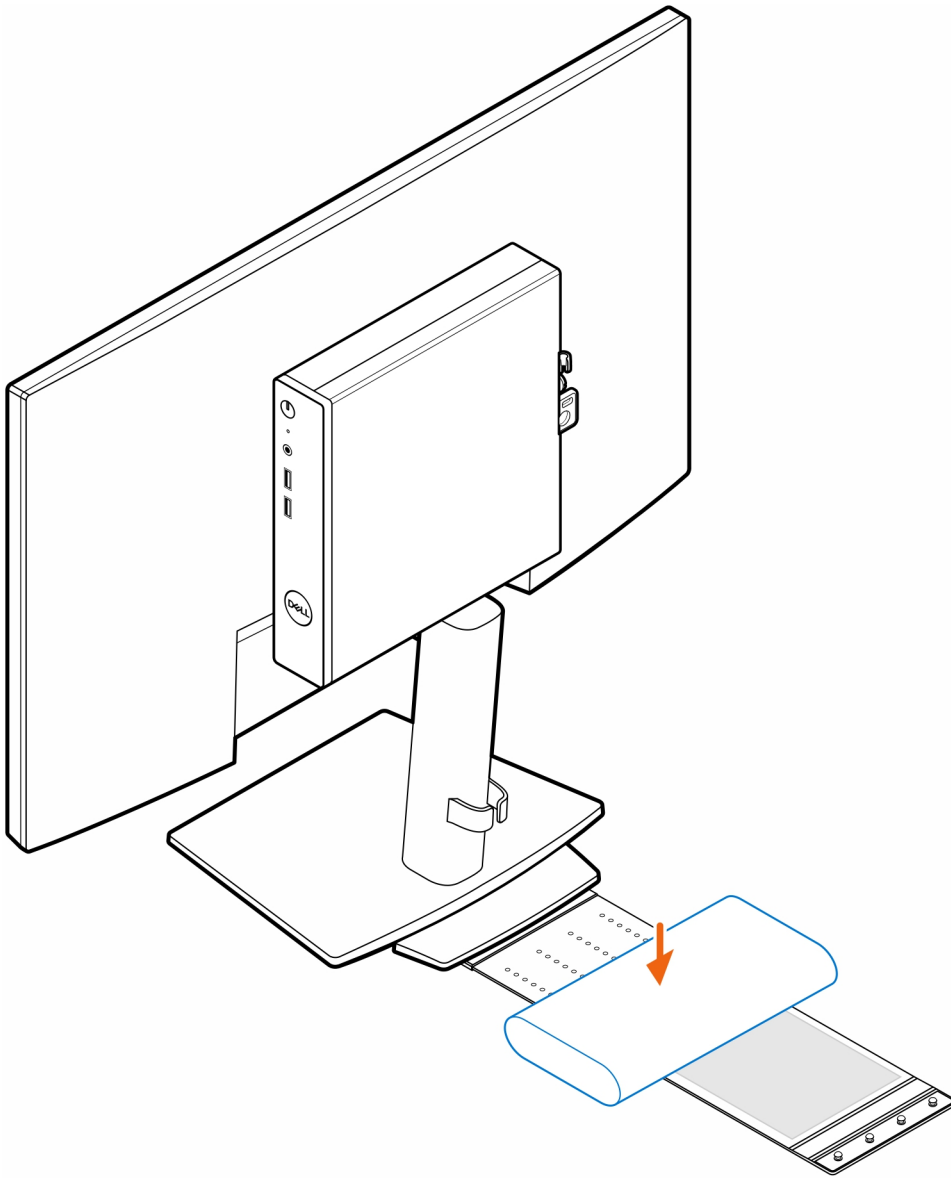




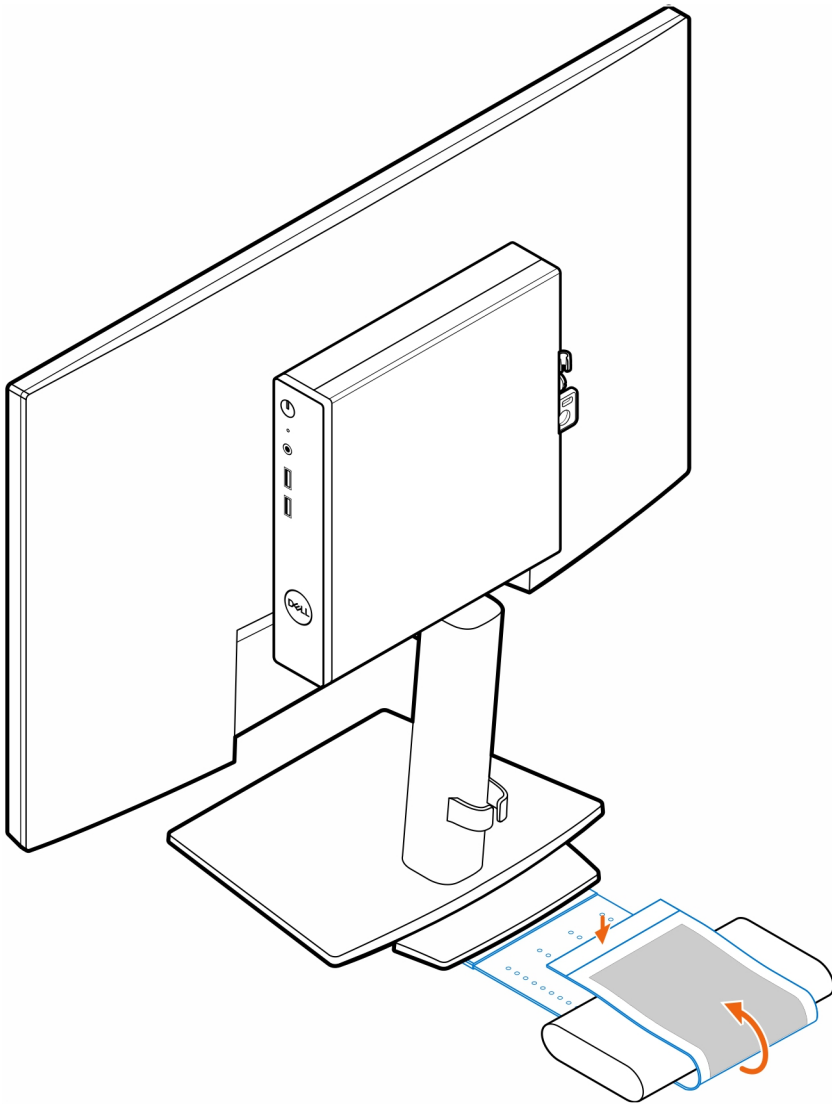
8. Align the step screws (M4x4) with the notches on the VESA mount and mount the computer on the VESA mount.



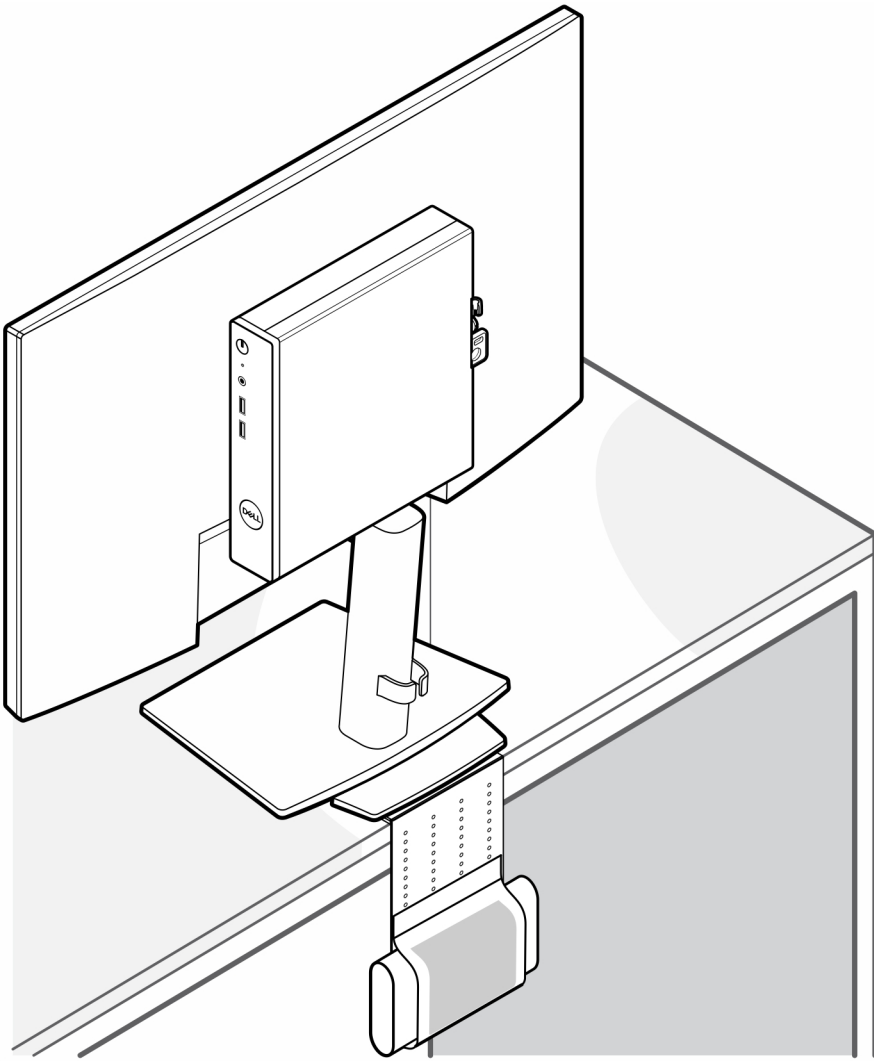
9. Place the AC adapter on the AC adapter sleeve.



10. Wrap the sleeve around the AC adapter and insert the retaining tabs into the holes on the AC adapter sleeve at an appropriate level.



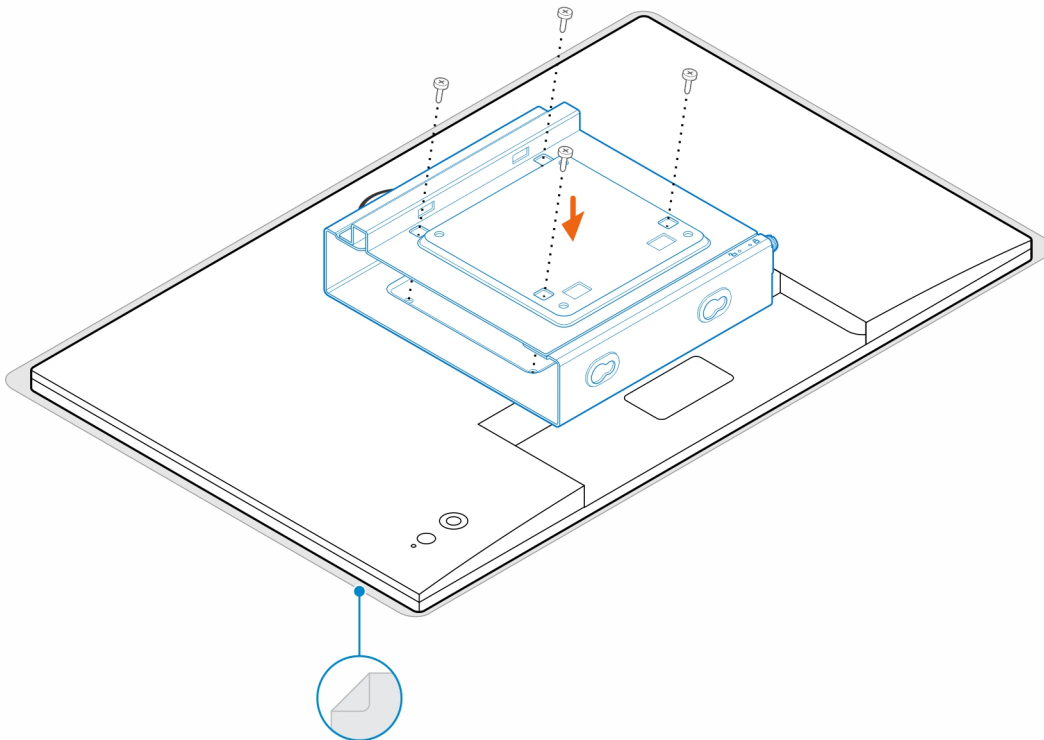
11. Place the AC adapter sleeve behind the desk.



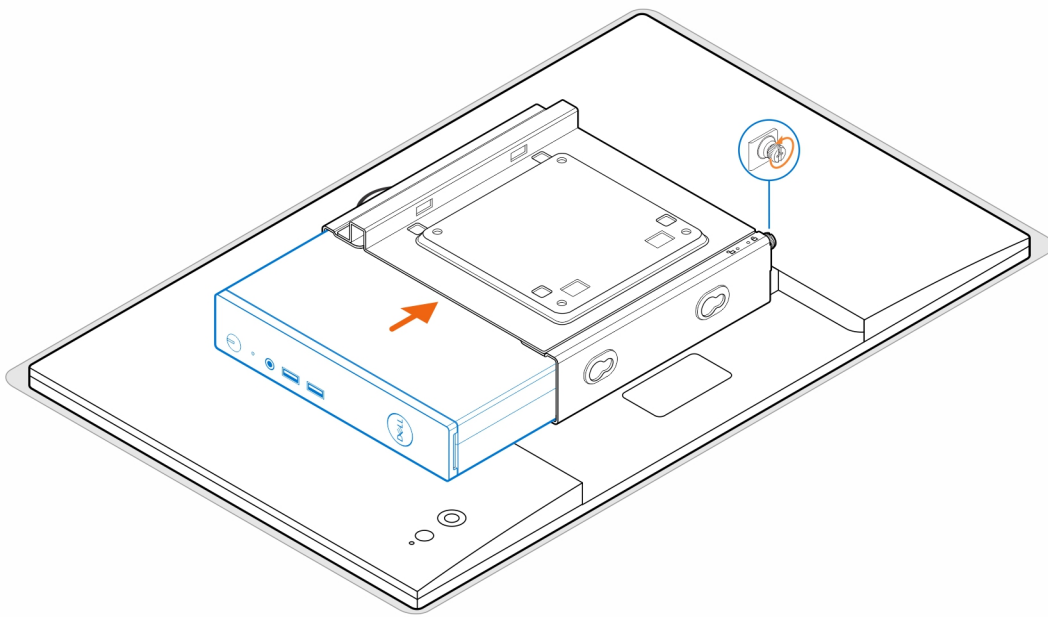
# OptiPlex Thin Client Dual Vesa Mount

## Steps

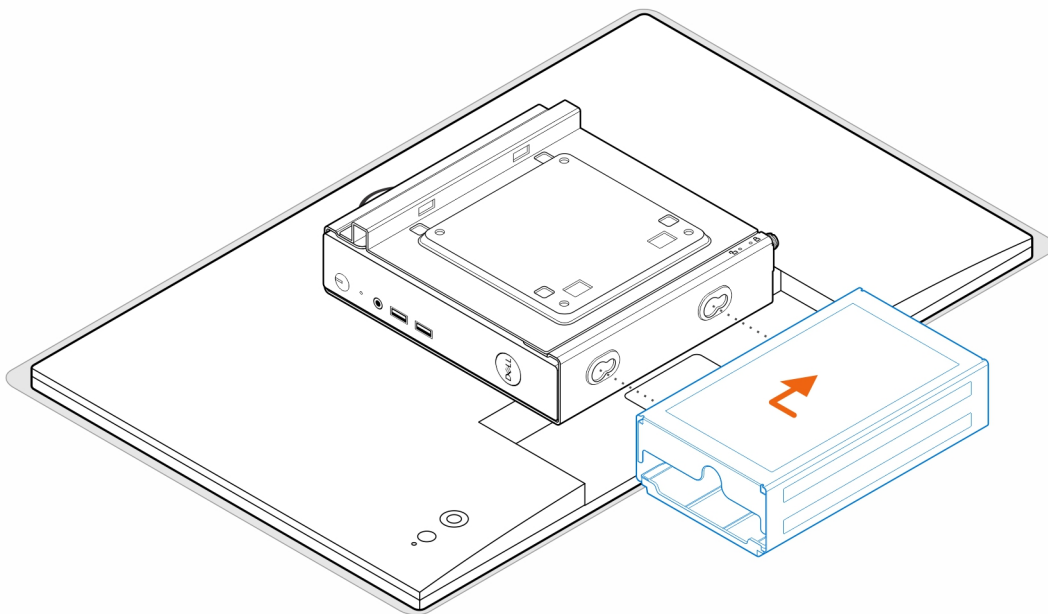
1. Follow the instructions in [Before working inside your computer](#).
2. Place the monitor on a soft cloth or cushion.
3. Remove the monitor back cover.
4. Install the four screws (M4x10) to secure the VESA mount on the monitor.



5. Slide the computer into the VESA mount.
6. Tighten the thumbscrew to secure the computer to the VESA mount.

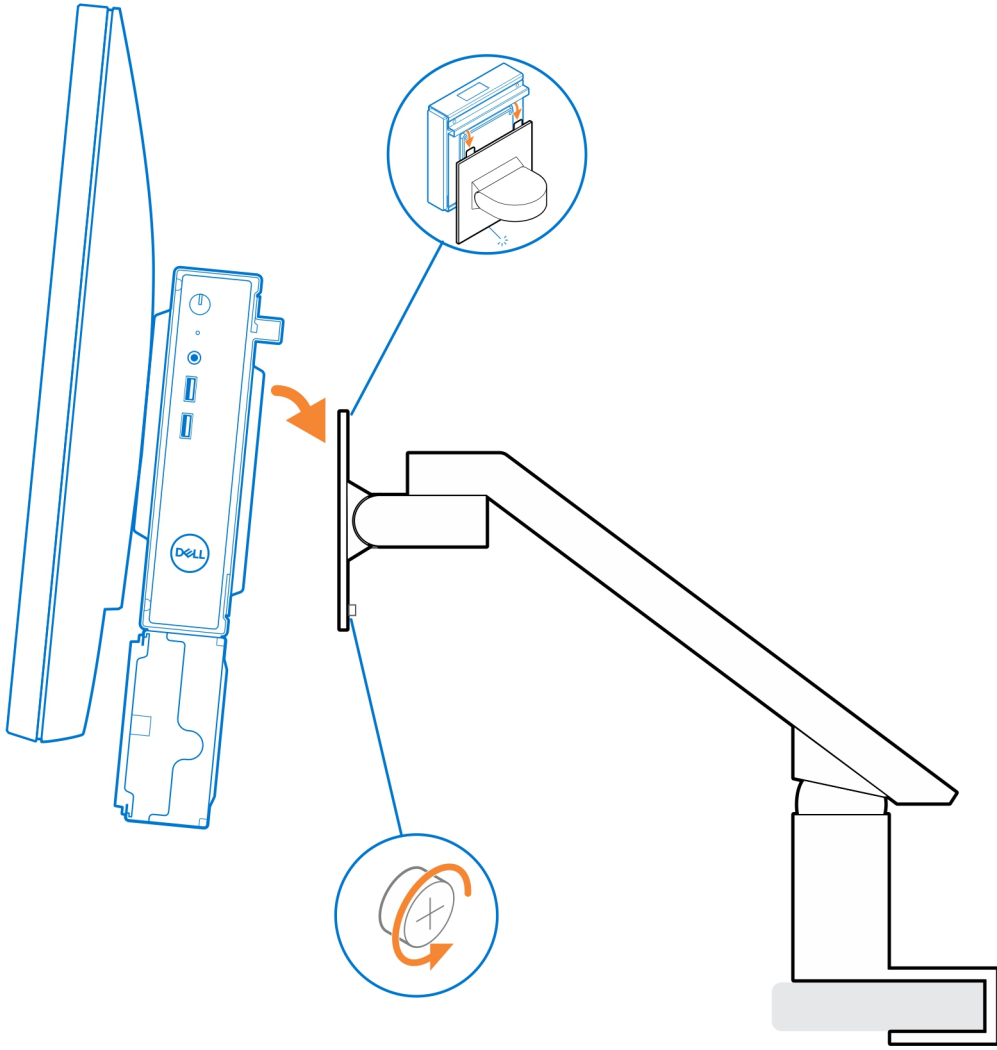


7. Align the screws on the power adapter enclosure with the screw holes on the VESA mount and slide the power adapter enclosure to lock it in place.



**i** **NOTE:** For OptiPlex 3000 Thin Client, the compatible AC adapter is 65 W AC adapter.

8. Lift the monitor and insert the slots on the VESA mount into the hooks on the monitor arm until it clicks in place.
9. Tighten the screw (M4x12) on the monitor arm to secure the monitor to the monitor arm.





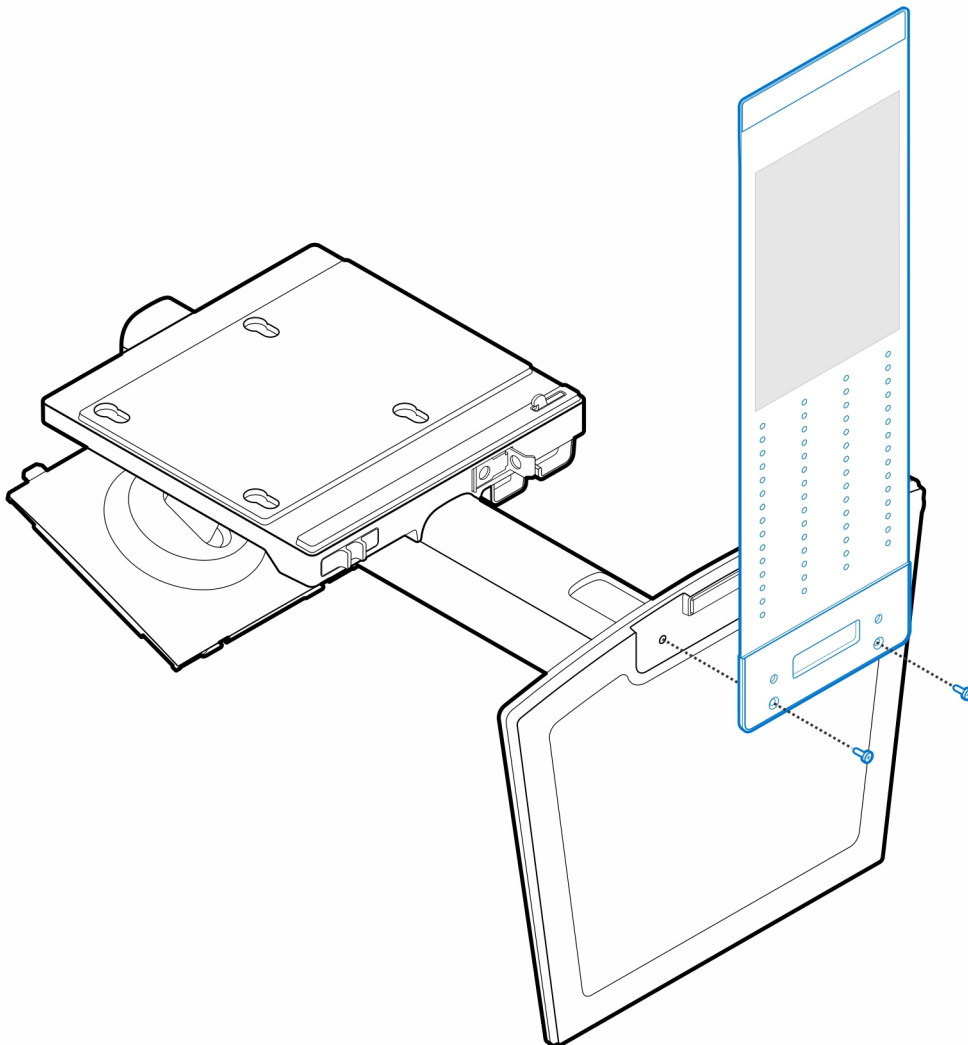
# OptiPlex Thin Client All-in-One Stand - MFS22

## About this task

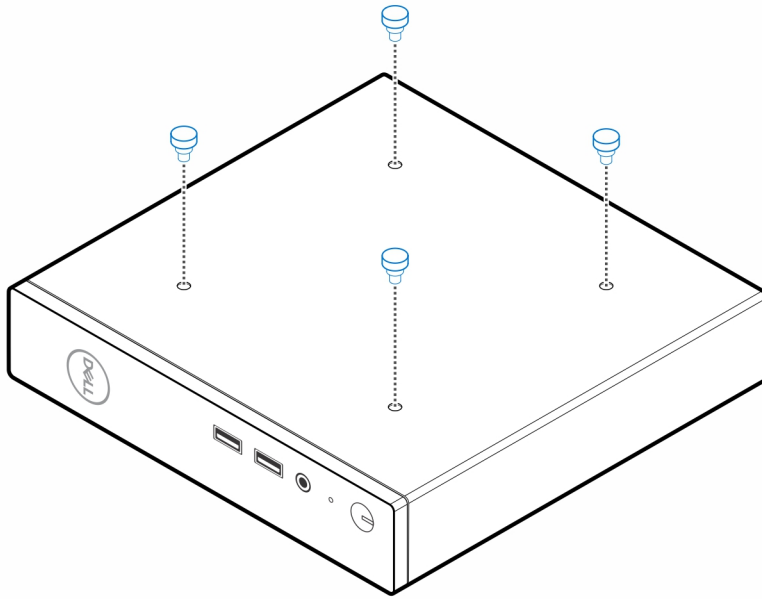
### Steps

1. Install the two screws (M3x6) to secure the AC adapter sleeve (upsell) to the all-in-one stand.

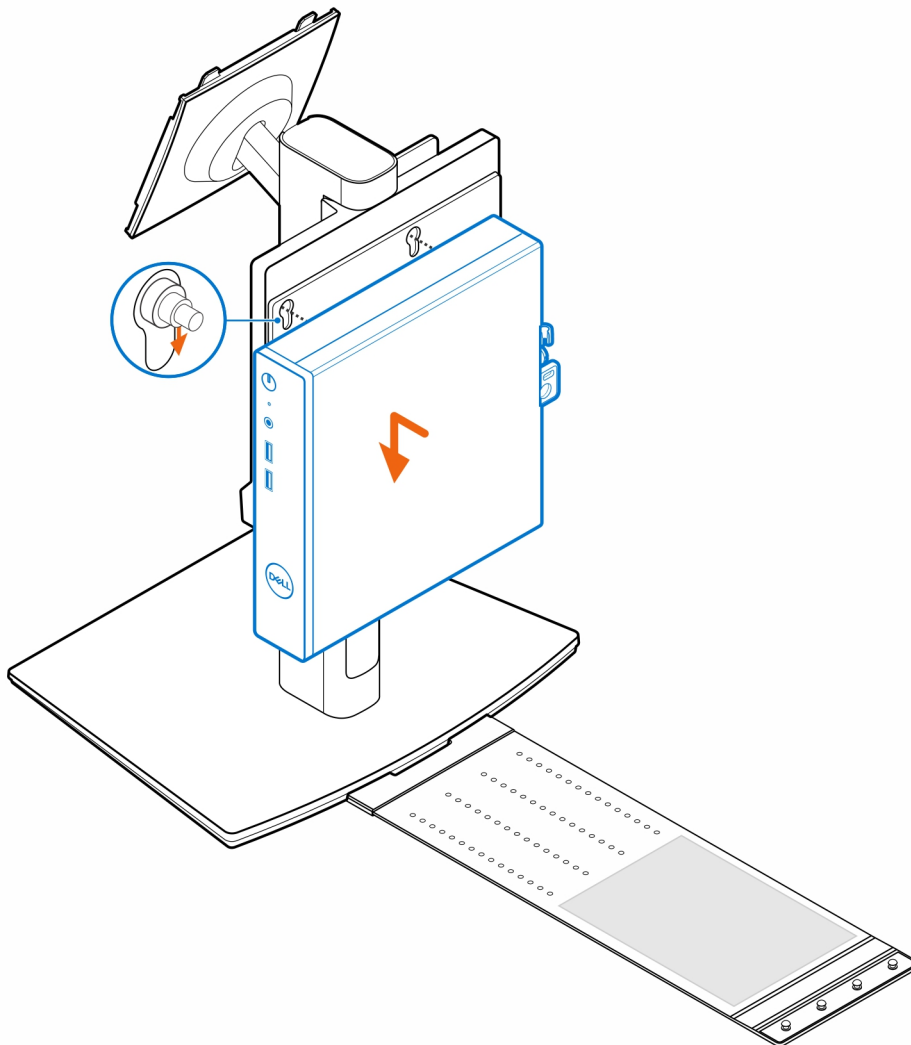
**i** **NOTE:** The AC adapter sleeve is an optional component that needs to be purchased separately.



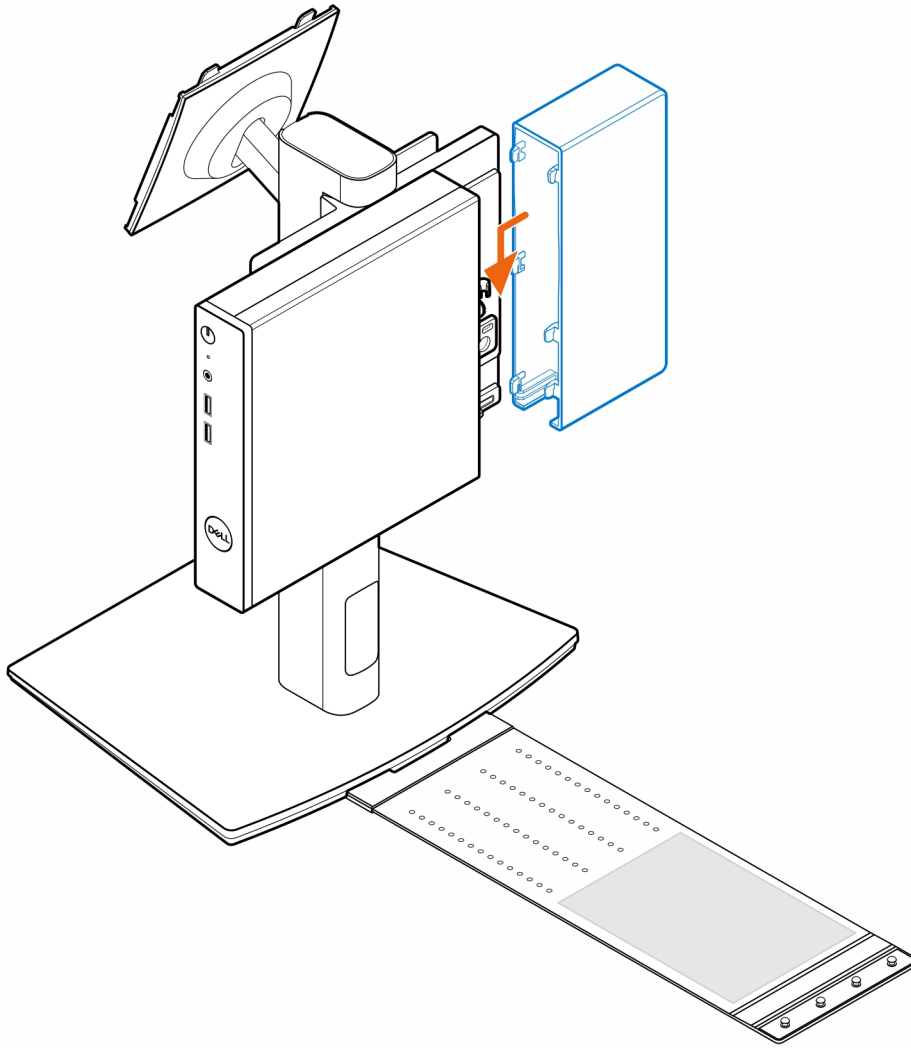
2. Install the four step (M4x4) screws on the chassis.



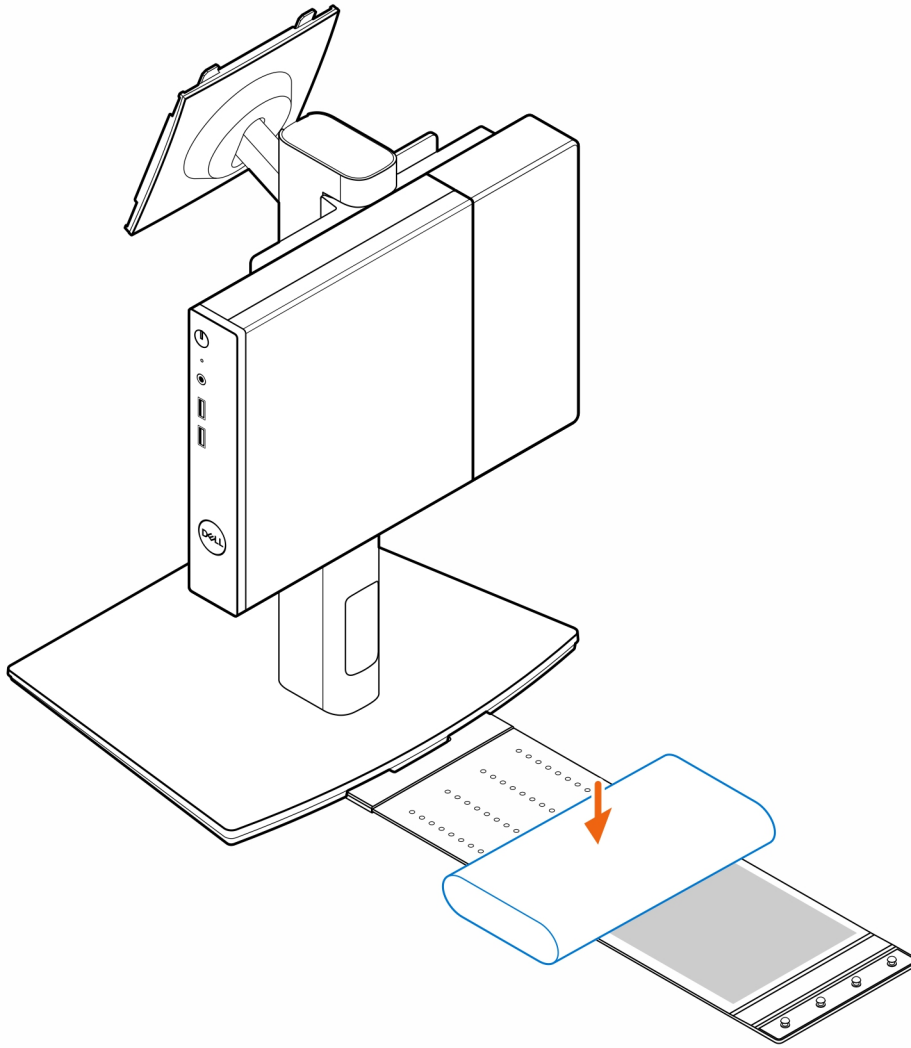
3. Align the step screws (M4x4) with the notches on the all-in-one stand and mount the computer on the all-in-one stand.



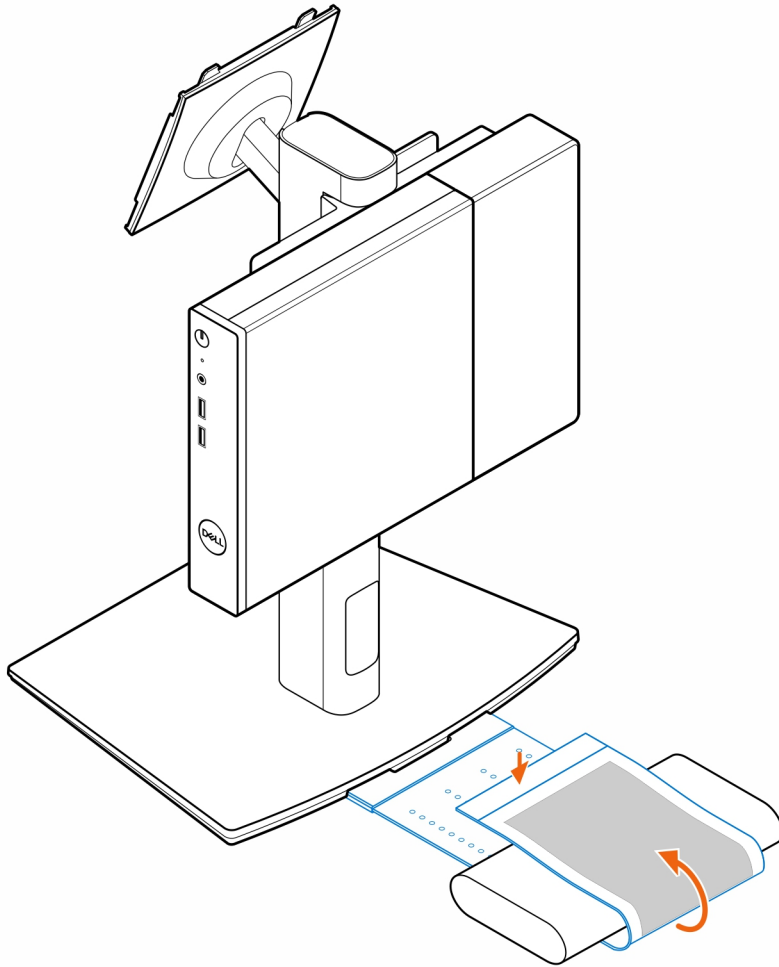
4. Align the tabs on the cable cover with the slots on the computer and slide the cable cover to lock it in place.



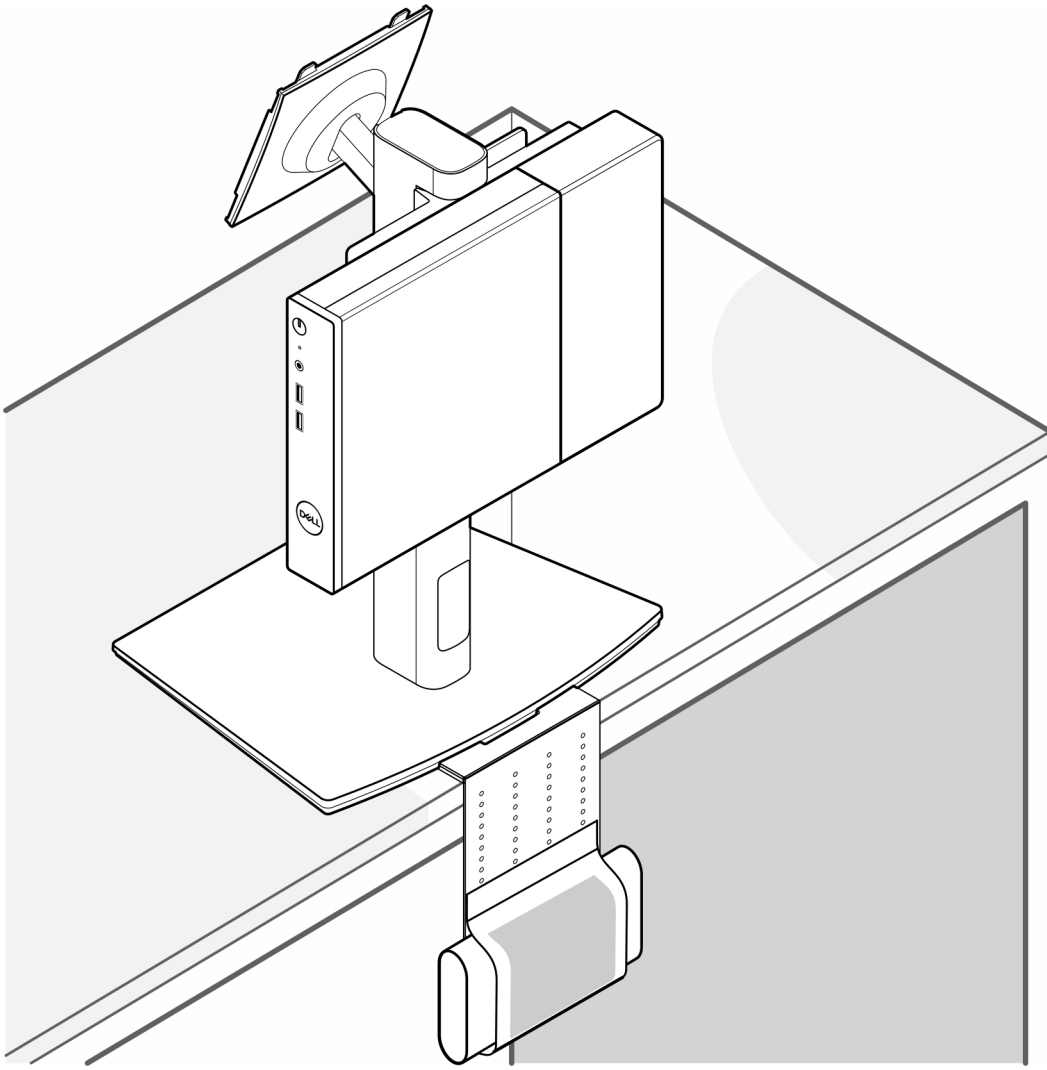
5. Place the AC adapter on the AC adapter sleeve .



6. Wrap the sleeve around the AC adapter and insert the retaining tabs into the holes on the AC adapter sleeve at an appropriate level.



7. Place the AC adapter sleeve behind the desk.




# Getting help

## Topics:

- [Contacting Dell](#)

## Contacting Dell

### Prerequisites

 **NOTE:** If you do not have an active Internet connection, you can find contact information on your purchase invoice, packing slip, bill, or Dell product catalog.

### About this task

Dell provides several online and telephone-based support and service options. Availability varies by country and product, and some services may not be available in your area. To contact Dell for sales, technical support, or customer service issues:

### Steps

1. Go to **Dell.com/support**.
2. Select your support category.
3. Verify your country or region in the **Choose a Country/Region** drop-down list at the bottom of the page.
4. Select the appropriate service or support link based on your need.