

# VP2776

## Display

### Quick Start Guide

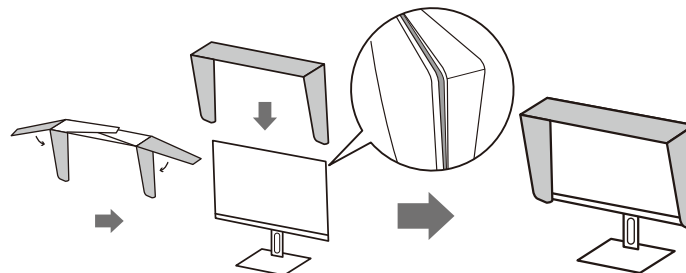
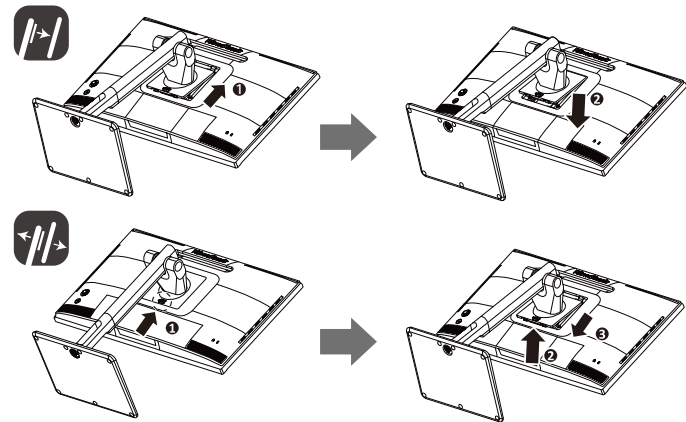
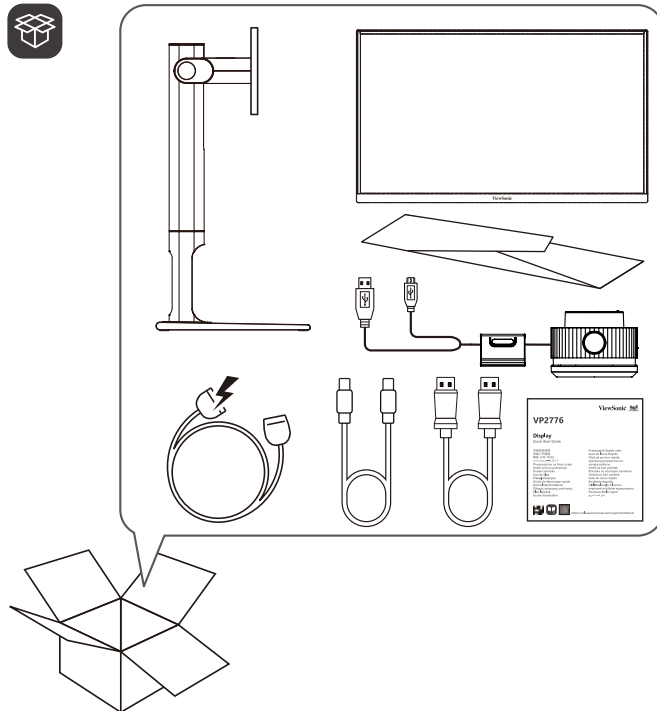
快速安裝說明  
快速入門指南  
빠른 시작 가이드  
クイックスタートガイド  
Ръководство за бърз старт  
Vodič za brzo pokretanje  
Úvodní příručka  
Aan de slag  
Pika-aloitusopas  
Guide de démarrage rapide  
Schnellstarthandbuch  
Οδηγός γρήγορης εκκίνησης  
Első lépések  
Guida introduttiva

Przewodnik Szybki start  
Guia de Início Rápido  
Ghid de pornire rapidă  
краткое руководство по началу работы  
Vodič za brzi početak  
Príručka so stručným návodom  
Vodnik za hitri začetek  
Guía de inicio rápido  
Snabbstartsguide  
Hızlı Başlangıç Kılavuzu  
короткий посібник користувача  
Panduan Mulai Cepat  
دليل البدء السريع

P/N:746.07301.0002

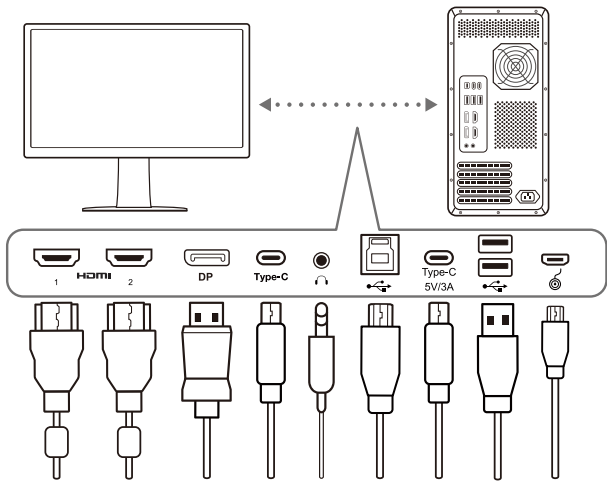
<https://color.viewsonic.com/support/software/>

ViewSonic®

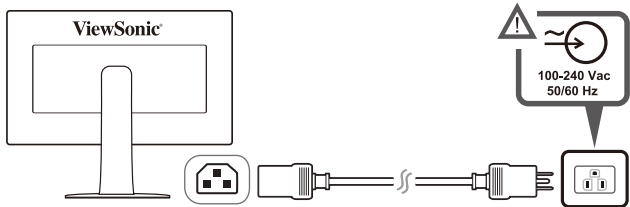




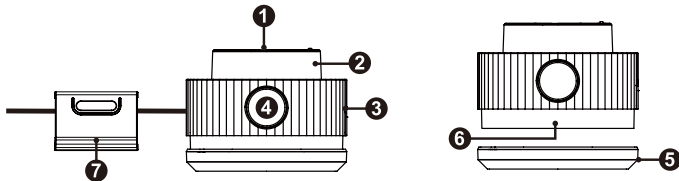
1



2



## Product Overview

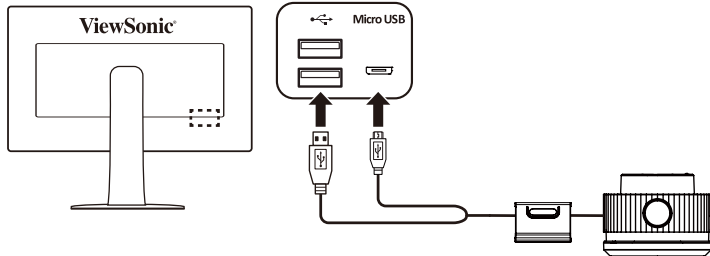


- 1. Confirm Button
- 2. Dial
- 3. Grip
- 4. Back Button
- 5. Lens Cap
- 6. Lens
- 7. Adjustable Weight

## Initial Setup

### Connecting the ColorPro™ Wheel

Connect the USB Type A and Micro USB cable of the ColorPro™ Wheel to the USB Type A and Micro USB port of the monitor.

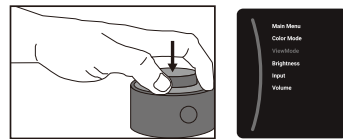


## Using the Device

### Using the ColorPro™ Wheel

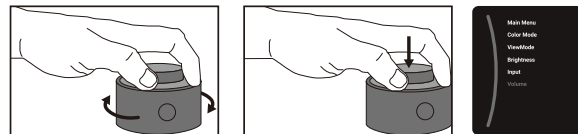
#### Enter the On-Screen Display (OSD) Menu

Enter the OSD Menu by pressing the Confirm Button.



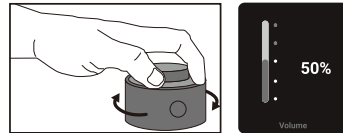
#### Select an Option and Confirm

Rotate the Dial to select an option, and press the Confirm Button to confirm.



#### Adjust the Value

Rotate the Dial left or right to adjust the value of the selected option.



#### Back

Press the Back Button at any time to return to the previous option.

