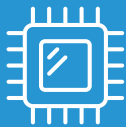




I-Series 3 Slate with Intel®

All-in-One Interactive Display



Intel 11th Gen
Processors



FHD PCAP
Touchscreen



Fanless &
Ventless

Product Overview

Built to be one of the thinnest commercial-grade fixed tablet form factors, the I-Series Slate delivers a 15.6-inch Full HD interactive display, powerful Intel processor and your choice of Windows, Chrome and Linux (SuSE, Ubuntu and Red Hat). Backed by reliable, enterprise-grade security and performance, the I-Series offers a modular platform with versatility to fit almost any application - from point-of-sale and interactive signage to self-service and automation controls.

OS options include: Windows,
ChromeOS Flex and Linux

Modular design for flexible mounting
in portrait, landscape and table-top
orientations

Extend connectivity from the display
to your accessories with the I/O hub

I-Series 3 Slate with Intel®

| Model | Specifications |
|---------------------------------------|---|
| Enclosure Color | Dark Gray |
| Display | 15.6" diagonal, active matrix TFT LED LCD |
| Aspect Ratio | 16:9 (standard) |
| Active Display Area (W x H) | 13.55" x 7.62" / 344 mm x 194 mm |
| Native (optimal) Resolution | 1920 x 1080 @ 60Hz |
| Touch Technologies | 10-touch TouchPro® PCAP |
| Colors | 16.2M |
| Brightness (typical) | LCD panel: 300 nits; TouchPro PCAP: 255 nits |
| Response Time Total (typical) | 25 msec |
| Viewing Angle (typical) | Horizontal: 85°/85° or 170° total / Vertical: 85°/85° or 170° total |
| Contrast Ratio (typical) | 1000:1 |
| Processor | Intel® Pentium® Processor J6426 |
| Graphics | Intel UHD Graphics |
| BIOS | AMI |
| Memory (RAM) | 8GB 3200MHz DDR4 SO-DIMM on 1 slot (Expandable to 32GB maximum on 1 slot) |
| Storage | 128GB M.2 NVME SSD, 72 TBW; GB equals one billion bytes when referring to storage capacity. Accessible capacity may be less. |
| Operating Systems | No Operating System Microsoft Windows 10 IoT Enterprise LTSC 64-bit |
| I/O Ports | Display Head Interface: USB-C Connector Supports USB 2.0/3.0, DP Output (Requires 20V/40W USB-C Power Delivery 2.0 if not using I/O Hub for power) I/O Hub: DC Input 4 x USB-A 3.0 RJ45 Ethernet LAN (Gigabit) (w/o Wake on Lan at S5 support) |
| Wireless Connectivity | 802.11 a/b/g/n/ac/ax 2.4GHz, 5GHz and 6GHz, Bluetooth 5.2 |
| Antenna | 2T2R design |
| Audio | 2x 2W internal speakers |
| Webcam | 8MP, Max Resolution: 1920x1080 30fps, with Auto Focus |
| MIC | Digital Microphone |
| TPM | TPM 2.0 |
| Power | External 19VDC universal-type power supply brick AC input voltage: 100-240 VAC Input frequency: 50-60 Hz Maximum output power: 65W |
| Power Consumption | ON: 30W, SLEEP: <2.0W, OFF: <0.5W |
| Dimensions | Without VESA Adapter: 14.3" x 8.8" x 0.6" / 362.8 mm x 223.4 mm x 15.3 mm With VESA Adapter: 14.3" x 8.8" x 0.8" / 362.8 mm x 223.4 mm x 20.2 mm |
| Shipping Dimensions | 18.11" x 12.64" x 7" / 460 mm x 321 mm x 178 mm |
| Weight | Unpacked: 3.53 lbs / 1.6 kg, Packaged: 8.81 lbs / 4 kg |
| Temperature | Operating: 0°C to 35°C / 32°F to 95°F, Storage: -20°C to 60°C / -4°F to 140°F |
| Humidity (non-condensing) | Operating: 10% to 90%; Storage: 0% to 95% (38.7°C max wet bulb temperature) |
| Energy Star Certified | 8.0 |
| Regulatory approvals and declarations | UL/cUL, FCC, CE, CB, NOM, RCM, VCCI, Argentina S-Mark, CCC, SRR, ANATEL, UKCA |
| Mounting Options | 75mm VESA mount |
| Real-Time Clock | Replaceable CR2450 lithium metal battery for clock |
| Warranty | 3-year |
| Extended Warranties | 4 year: E819598; 5 year: E819795; 3 year + AUR: E820186; 4 year + AUR: E820388; 5 year + AUR: E820582 |
| MTBF | 50,000 hours demonstrated |
| What's in the box | I Series Slate, IO Hub, North America Power Cord, European Power Cord, 65W Power Adapter, Quick Installation Guide (QIG) |

Ordering Information

| Part Number | Processor | OS | Memory | Storage |
|-------------|-----------|-----------|--------|---------|
| E983676 | J6426 | No OS | 8GB | 128GB |
| E983895 | J6426 | Window 10 | 8GB | 128GB |

Learn more about Elo at [EloTouch.com](https://www.elotouch.com).

Americas

Tel +1 408 597 8000
elosales.na@elotouch.com

Europe (EMEA)

Tel +32 (0)16 70 45 00
EMEA.Sales@elotouch.com

Asia Pacific

Tel +86 (21) 3329 1385
www.elotouch.com.cn

Elo reserves the right to change or update, without notice, any information contained herein; to change, without notice, the design, construction, materials, processing or specifications of any products; and to discontinue or limit production or distribution of any products. Elo and the Elo logo are either trademarks or registered trademarks of Elo Touch Solutions, Inc. All other trademarks are the property of their respective owners.
© 2024 Elo Touch Solutions, Inc. All rights reserved. 24021AES00178

