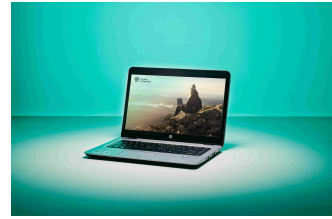


Circular Computing HP - EliteBook 840 G4 Laptop - 14" FHD (1920x1080) - Intel Core i5 7th Gen 7200U - 8GB RAM - 256GB SSD - Windows 10 Professional - Full UK (UK Layout) - Fully Tested Original Battery - IEEE 802.11ac Wireless LAN - 1 Year Advance Replacement Warranty - Remanufactured



Brand : Circular Computing

Product code: F7C4M20037

Product name : HP - EliteBook 840 G4 Laptop - 14" FHD (1920x1080) - Intel Core i5 7th Gen 7200U - 8GB RAM - 256GB SSD - Windows 10 Professional - Full UK (UK Layout) - Fully Tested Original Battery - IEEE 802.11ac Wireless LAN - 1 Year Advance Replacement Warranty - Remanufactured

- Guaranteed premium like new cosmetic condition
 - Enterprise grade performance and reliability
 - Backed by 1-3 year warranties
 - Each laptop is independently Certified Carbon Neutral
 - We plant 5 trees for each laptop delivered, helping people & making earth cooler
 - Remanufactured according to ISO8887 & ISO9001 quality criteria
 - Laptops are compliant for enterprise, education and public sector buyers on frameworks
- Circular Computing - HP - EliteBook 840 G4 Laptop - 14" FHD (1920x1080) - Intel Core i5 7th Gen 7200U - 8GB RAM - 256GB SSD - Windows 10 Professional - Full UK (UK Layout) - Fully Tested Original Battery - IEEE 802.11ac Wireless LAN - 1 Year Advance Replacement Warranty - Remanufactured



Circular Computing HP - EliteBook 840 G4 Laptop - 14" FHD (1920x1080) - Intel Core i5 7th Gen 7200U - 8GB RAM - 256GB SSD - Windows 10 Professional - Full UK (UK Layout) - Fully Tested Original Battery - IEEE 802.11ac Wireless LAN - 1 Year Advance Replacement Warranty - Remanufactured:

Certified carbon neutral remanufactured laptops from Circular Computing are the most sustainable option for your business, people & planet. Get the IT you need for less with guaranteed premium quality & performance backed by 1 to 3 year warranties. Because IT shouldn't cost the Earth.

| Design | | Ports & interfaces | |
|---------------------------------|-------------------------|---|----------------|
| Product type * | Laptop | Docking connector | ✓ |
| Product colour * | Silver | USB Sleep-and-Charge | ✓ |
| Form factor * | Clamshell | USB Sleep-and-Charge ports | 1 |
| Refurbished | ✓ | Keyboard | |
| Original brand name | HP | Pointing device | Touchpad |
| Display | | Keyboard layout | QWERTY |
| Display diagonal * | 35.6 cm (14") | Keyboard language | UK English |
| Display resolution * | 1920 x 1080 pixels | Numeric keypad * | ✗ |
| Touchscreen * | ✗ | Full-size keyboard | ✓ |
| HD type | Full HD | Software | |
| Processor | | Operating system installed * | Windows 10 Pro |
| Processor manufacturer * | Intel | Processor special features | |
| Processor family * | Intel® Core™ i5 | Enhanced Intel SpeedStep Technology | ✓ |
| Processor generation | 7th gen Intel® Core™ i5 | Intel Clear Video Technology | ✓ |
| Processor model * | i5-7200U | Intel Flex Memory Access | ✓ |
| Processor cores | 2 | Intel Trusted Execution Technology | ✗ |
| Processor boost frequency | 3.1 GHz | Intel Enhanced Halt State | ✓ |
| Processor frequency * | 2.5 GHz | Intel VT-x with Extended Page Tables (EPT) | ✓ |
| Processor cache | 3 MB | Intel TSX-NI | ✗ |
| Processor cache type | Smart Cache | Intel Stable Image Platform Program (SIPP) | ✗ |
| Bus type | OPI | Intel Software Guard Extensions (Intel SGX) | ✓ |
| Configurable TDP-up frequency | 2.7 GHz | Intel 64 | ✓ |
| Configurable TDP-up | 25 W | Execute Disable Bit | ✓ |
| Configurable TDP-down | 7.5 W | | |
| Configurable TDP-down frequency | 0.8 GHz | | |

| Memory | | Processor special features | |
|---|------------------------|---|----------|
| Internal memory * | 8 GB | Idle States | ✓ |
| Internal memory type | DDR4-SDRAM | CPU configuration (max) | 1 |
| Memory slots | 2x SO-DIMM | Embedded options available | ✗ |
| Maximum internal memory * | 32 GB | Graphics & IMC lithography | 14 nm |
| Storage | | Intel Virtualization Technology for Directed I/O (VT-d) | ✓ |
| Total storage capacity * | 256 GB | Intel Identity Protection Technology version | 1.00 |
| Storage media * | SSD | Intel Smart Response Technology version | 1.00 |
| Optical drive type * | ✗ | Intel Stable Image Platform Program (SIPP) version | 0.00 |
| Card reader integrated | ✓ | Intel Secure Key Technology version | 1.00 |
| Graphics | | Intel TSX-NI version | 0.00 |
| Discrete graphics card model * | Not available | Intel Virtualization Technology (VT-x) | ✓ |
| On-board graphics card * | ✓ | Conflict-Free processor | ✓ |
| On-board GPU manufacturer | Intel | Battery | |
| Discrete graphics card * | ✗ | Battery capacity * | 51 Wh |
| On-board graphics card model * | Intel® HD Graphics 620 | Security | |
| Audio | | Cable lock slot | ✓ |
| Audio system | Bang & Olufsen | Smart card reader | ✗ |
| Speakers manufacturer | Bang & Olufsen | Trusted Platform Module (TPM) | ✓ |
| Camera | | Trusted Platform Module (TPM) version | 2.0 |
| Front camera | ✓ | Weight & dimensions | |
| Front camera HD type | HD | Width | 337.8 mm |
| Network | | Depth | 237 mm |
| Top Wi-Fi standard * | Wi-Fi 5 (802.11ac) | Height | 18.8 mm |
| Mobile network connection * | ✗ | Weight * | 1.48 kg |
| WWAN | Not installed | Ports & interfaces | |
| USB 3.2 Gen 1 (3.1 Gen 1) Type-A ports quantity * | 2 | USB 3.2 Gen 1 (3.1 Gen 1) Type-A ports quantity * | 2 |
| USB 3.2 Gen 1 (3.1 Gen 1) Type-C ports quantity * | 1 | USB 3.2 Gen 1 (3.1 Gen 1) Type-C ports quantity * | 1 |
| DisplayPorts quantity | 1 | DisplayPorts quantity | 1 |
| VGA (D-Sub) ports quantity | 1 | VGA (D-Sub) ports quantity | 1 |



5060638771838

Disclaimer. The information published here (the "Information") is based on sources that can be considered reliable, typically the manufacturer, but this Information is provided "AS IS" and without guarantee of correctness or completeness. The Information is only indicative and can be changed at any time without notification. No rights can be based on the Information. Suppliers or aggregators of this Information do not accept any liability with regard to the content of (web)pages and other documents, including its Information. The publisher of the Information can not be held liable for the content of 3rd party websites that are linking this Information or are linked to from this Information. You as the User of the Information are solely responsible for the choice and usage of this Information. You are not entitled to transfer, copy or otherwise multiply or distribute the Information. You are obliged to follow the directions of the copyright owner(s) with regard to the use of the Information. Exclusively Dutch law is applicable. With regard to price and stock data on the site, the publisher followed a number of starting points, which are not necessarily relevant for your private or business circumstances. Therefore, the price and stock data are only indicative and are subject to changes. You are personally responsible for the way you use and apply this information. As a user of the Information or sites or documents in which this Information is included, you will adhere to standard fair use including avoidance of spamming, ripping, intellectual-property violations, privacy violations, and any other illegal activity.

Publication date: 15-NOV-2024. Prints or copies of Information are only valid on the printed Publication date