



Make It Yours.

TD300 MESH/ TD300 MESH WHITE

TD300-KGNN-S00/TD300-WGNN-S00

POSTMODERN ELEGANCE



TD300 Mesh

TD300 Mesh brings together modern presentation and performance with its three dimensional artistic mesh front panel. The polygonal diamond-cut facade emphasizes the illumination of two included SickleFlow PWM ARGB fans, cast various glowing effects, shifting based on the viewing angle. Cooler Master's FineMesh technology simultaneously provides high airflow, dust filtration, and strengthened structure for maximum performance and effortless cooling. With the exclusive removable top panel, adaptable drive cage, and ample cooling support, TD300mesh provides a canvas of unlimited possibilities.

FEATURES

Polygonal Mesh – Crafted with Cooler Master's FineMesh technology, the polygonal mesh features a three-dimensional contour, capable of simultaneously providing high airflow and excellent dust filtration.

Sickleflow PWM ARGB Fans Included– Pre-installed with two highly acclaimed 120mm ARGB Sickleflow fans, managed by the included Hub to easily customize a comprehensive ARGB lighting system and minimize ARGB port usage on the motherboard.

ARGB/PWM Hub - The included HUB features 5 ARGB and 4 PWM ports and facilitates cable management in the system, allowing you to conveniently control fans with a single connector for power and PWM signal and another for ARGB signal.

Removable Top Panel – The top panel is entirely removable for improved access to the components during assembly. Ease of use also facilitates the mounting of cooling solutions such as fans and radiators.

Tempered Glass Side Panel – Hardware, custom-loop cooling, and the pure pride of the builder is shown in panoramic view through an edge-to-edge tempered glass side panel.

Adaptable Drive Cage – The drive cage can be shifted towards the front to accommodate for PSU space, backwards to provide additional radiator space, or even completely removed.

Versatile Cooling Options –Support for up to six fans and front, top, and rear radiator support ensure that performance is not compromised.

Room For Upgrades – Support for up to a 344mm graphics card, a 166mm CPU cooler, and up to a 325mm PSU in length provides room for upgrades to stay ahead of the game.

SPECIFICATIONS

Product Name		TD300 Mesh	TD300 Mesh white
Product Number		TD300-KGNN-S00	TD300-WGNN-S00
Exterior Color		Black	White
Materials	Body	Steel, Mesh, Plastic	
	Left Side Panel	Tempered Glass	
Dimensions (L x W x H)	Body Size	366.5 x 210 x 410mm	
	incl. Protrusions	433 x 210 x 420.5mm	
Volume (Liters incl. Protrusions)		38.24L	
Motherboard Support		Mini-ITX, Micro-ATX	
Expansion Slots		4	
Drive Bays	5.25" ODD	N/A	
	3.5" / 2.5" Combo	2	
	2.5" SSD	2	
I/O Panel	USB Ports	2 x USB 3.2 Gen 1 (USB 3.0)	
	Audio In / Out	1 x 3.5mm Audio Jack 1 x 3.5mm Mic Jack	
	Other	1 x ARGB/PWM Hub	
Pre-installed Fan(s)	Top	N/A	
	Front	2 x 120mm Sickle flow PWM ARGB fans	
	Rear	N/A	
Fan Support	Bottom	N/A	
	Top	2 x 120mm / 2 x 140mm	
	Front	3 x 120mm* / 2 x 140mm (*can only mount behind the front plate)	
Radiator Support	Rear	1 x 120mm	
	Top	120 / 140 / 240 / 280mm	
	Front	120 / 140 / 240 / 280mm	
Clearances	Rear	120mm	
	CPU Cooler	166mm	
	Power Supply	325mm (w/o front radiator & drive cage) 140mm (drive cage in backmost position)	
Cable Routing	Graphics Card	344mm	
	Behind MB Tray	18~22mm	
Dust Filters		Front, Top, Bottom	
Power Supply Support		Bottom Mount, ATX	

PACKING INFORMATION

	TD300-KGNN-S00	TD300 Mesh white	
EAN	4719512124154 6928968315230 (for CN)	4719512124161 6928968315223 (for CN)	
UPC	884102096471	884102096488	
Net weight	5.85 kg		
Gross weight	7.10 kg		
Carton dimension (LxWxH)	493 x 280 x 493 mm		
Cont.	W/ Pallet	Carton/ Pallet	W/O Pallet
20'	320	32	416
40'	704	32	848
40 HQ	792	36	967



Make It Yours.

FEATURES



Polygonal Mesh

Crafted from Cooler Master's Fine Mesh technology, Polygonal Mesh features a three-dimensional contour and is also capable of simultaneously providing high airflow and dust filtration.



Dual ARGB Fans

Two pre-installed 120mm ARGB fans can be managed by the motherboard, connected by the included Hub, to create a comprehensive ARGB lighting system.



Removable Top Panel

The top panel is entirely removable for improved access to the components during assembly. Ease of use also facilitates the mounting of cooling solutions such as fans and radiators.



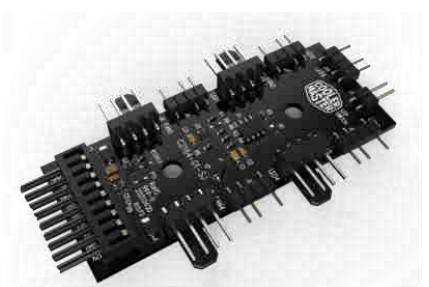
Tempered Glass Side Panel

Hardware, custom-loop cooling, and the pure pride of the builder is shown in panoramic view through an edge-to-edge tempered glass side panel.



Adaptable Drive Cage

The drive cage can be shifted toward the front to accommodate for PSU space, backwards to provide additional radiator space, or even completely removed.



ARGB/PWM Hub Included

The HUB features 5 ARGB and 4 PWM ports and facilitates cable management in the system, allowing you to conveniently control fans with a single connector for power and PWM signal and another for ARGB signal.