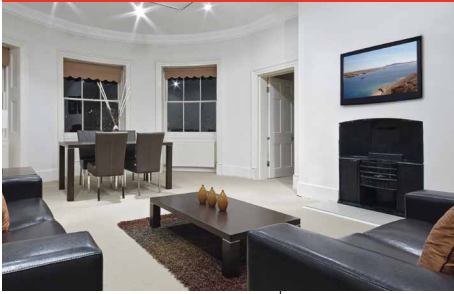


PF640



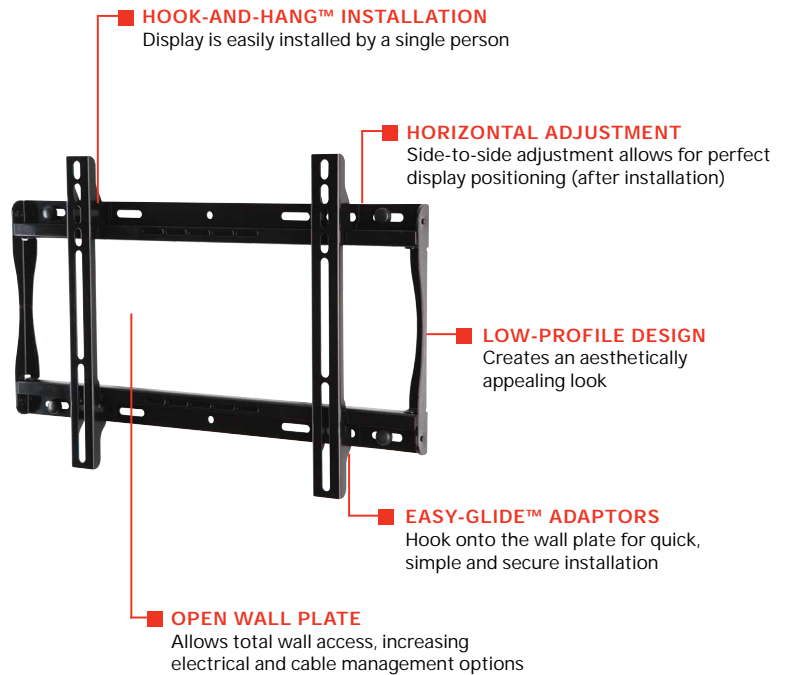
	Mounting Pattern 450 x 305mm (17.72" x 12.01")		Max Load 100lb (45kg)
--	---	--	------------------------------------

PARAMOUNT™ Universal Flat Wall Mount

FOR 32" TO 46" DISPLAYS*

The Paramount™ series wall mounts provide versatile and multi-functional features. With PF640, a low-profile design positions the display just 1.26" (32mm) from the wall. The Hook-and-Hang™ system offers easy, one-person installation of the display. The Easy-Glide™ adaptors hook onto the wall plate for a quick, simple, and secure installation. After installation, achieve perfect display positioning with side-to-side adjustment capabilities.

- Universal mount fits displays with mounting patterns up to 450 x 305mm (17.72" W x 12.01" H) and accommodates up to 400 x 300mm VESA® mounting patterns
- Low-profile design holds display only 1.26" (32mm)
- Horizontal display adjustment up to 6.00" (152mm) for centering display on wall
- Landscape to portrait mounting options increases installation versatility. Please check display dimensions against the wall plate when used in portrait mode**
- Includes all necessary wall and display attachment hardware
- Design is UL listed and tested to four times stated load capacity
- Works with thinner displays, such as OLED



Low-profile design for a sleek, yet compact installation.



Comes in color packaging with included installation hardware and easy to follow instructions.

Please visit peerless-av.com/en-us/patents for patent information.

*This display size range is simply a guideline for product selection. Displays larger than the screen size range may still be compatible as long as they fall within the VESA® pattern and max weight of the Peerless-AV® product.

**Requires display to be removed and reset on mount

PF640	Paramount™ Universal Flat Wall Mount for 32" to 46" Displays				
-------	--	--	--	--	--

Product Specifications

	DIMENSIONS (W x H x D)	PRODUCT WEIGHT	LOAD CAPACITY	FINISH	AVAILABLE COLORS
PF640	19.37" x 12.81" x 1.26" (492 x 325 x 32mm)	3.65lb (1.66kg)	100lb (45kg)	Scratch Resistant Fused Epoxy	Gloss Black

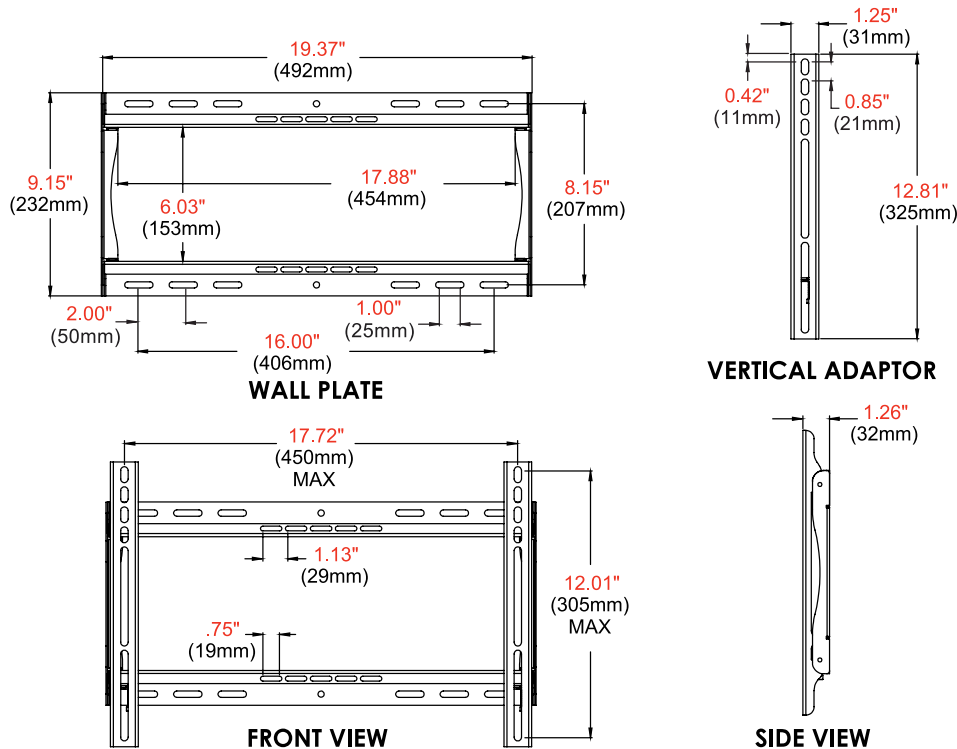
Package Specifications

	PACKAGE SIZE (W x H x D)	PACKAGE SHIP WEIGHT	PACKAGE UPC CODE	PACKAGE CONTENTS	UNITS IN PACKAGE
PF640	21.69" x 1.57" x 10.71" (551 x 40 x 272mm)	5.20lb (2.36kg)	735029252344	Wall Mount, Wall and Display Installation Hardware, Installation Instructions	1

Accessories

- | | | | |
|------------|--|---------------|--|
| ACC309: | Video Conference Shelf | ACBSR1: | Universal Sound Bar Mounting Kit |
| ACC415: | 4-pack Metal Stud Fastener Kit | ESHV models: | AV Wall Shelves |
| ACC925: | Security Fasteners for V200x200 to V800x400 Mounts | IBA4-W: | Easy Mount Recessed Low Voltage Cable Plate |
| ACC-M835: | Security Fast-Pack, M8x25 & M8x35 | IBA5-W: | Recessed Low Voltage Media Plate w/ Duplex Surge Protector |
| ACC-UCM: | Universal AV Component Mount | IB14X9-W: | 14x9" In-Wall Box |
| ACC-V600X: | 600mm Extension for 400mm Adaptors | IB14X9-AC-W: | 14x9" In-Wall Box with Duplex Surge Protector |
| ACC-V900X: | 600, 800 or 900mm Extension for 400mm Adaptors | IB14X14-W: | 14x14" In-Wall Box |
| ACC-WMVCS: | Video Conferencing Shelf | IB14X14-AC-W: | 14x14" In-Wall Box with Duplex Surge Protector |

All dimensions = inch (mm)



Architect Specifications

The Paramount™ Universal Flat Wall Mount shall be a Peerless-AV model PF640 and shall be located where indicated on the plans. Assembly and installation shall be done according to instructions provided by the manufacturer.

Visit peerless-av.com to see the complete line of AV solutions from Peerless-AV, including outdoor displays, kiosks, display mounts, projector mounts, carts/stands, and a full assortment of accessories.

Peerless-AV
 2300 White Oak Circle
 Aurora, IL 60502 USA
(800) 865-2112
(630) 375-5100
Fax: (800) 359-6500

Peerless-AV EMEA
 Unit 3 Watford Interchange
 Colonial Way, Watford
 Herts, WD24 4WP
 United Kingdom
+44 (0) 1923 200100
Fax: +44 (0) 1923 200101

Peerless-AV Latin America
 Av. de las Industrias 413
 Parque Industrial Escobedo
 General Escobedo, N.L.,
 México, 66062
+52 (81) 8384-8300
Fax: +52 (81) 8384-8360

