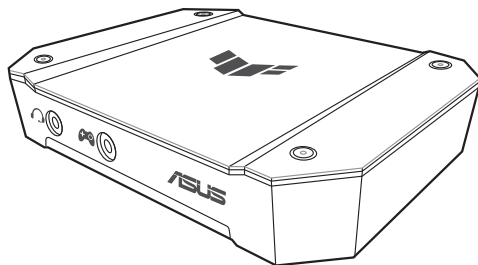




TUF GAMING CAPTURE BOX-CU4K30



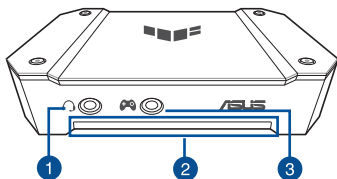
Quick Start Guide

Contents

English.....	3
繁體中文.....	7
简体中文.....	9
Français.....	11
Deutsch.....	13
Italiano.....	15
Русский.....	17
العربية.....	19
Hrvatski.....	21
Čeština.....	23
Nederlands.....	25
Ελληνικά.....	27
Magyar.....	29
Bahasa Indonesia.....	31
한국어.....	33
Português.....	35
Polski.....	37
Română.....	39
Español.....	41
Srpski.....	43
Slovenščina.....	45
Svenska.....	47
Türkçe.....	49
Português do Brasil.....	51
日本語.....	53
Tiếng Việt.....	55
עברית.....	57

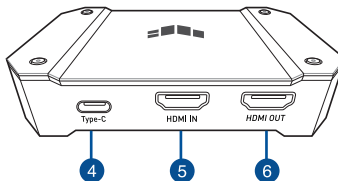
Getting to know your CU4K30

Front view



1. Headset port
2. LED indicator
3. Game pad port

Rear view



4. USB 3.2 Gen1x1 Type-C®
5. HDMI IN port
6. HDMI OUT port

LED indications

Status	LED Indicator	Indications
Working	Static green	Standby mode (USB 2.0)
	Static blue	Standby mode (USB 3.2 Gen1x1)
	Color cycle effect	Working mode (Party mode on)
	Rainbow effect	Working mode (Party mode off)
	Static red	HDCP/Upscaling or downscaling failure
	Flashing red	Device/USB abnormal
	Flashing yellow	HDMI input interrupted
Firmware upgrading	Breathing orange	Firmware upgrading
	Static orange	Firmware upgraded successfully
	Flashing red	Firmware upgrade failed

Specifications

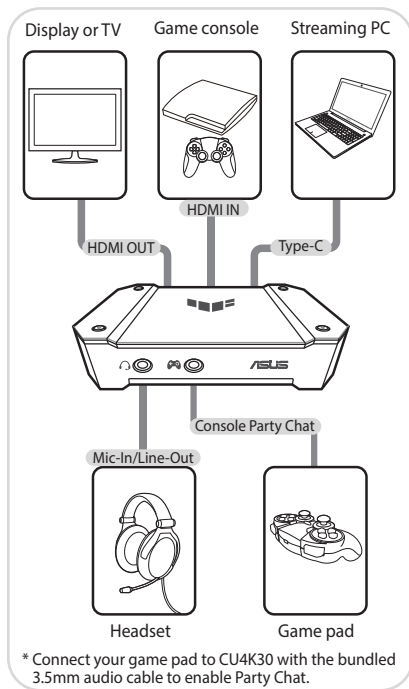
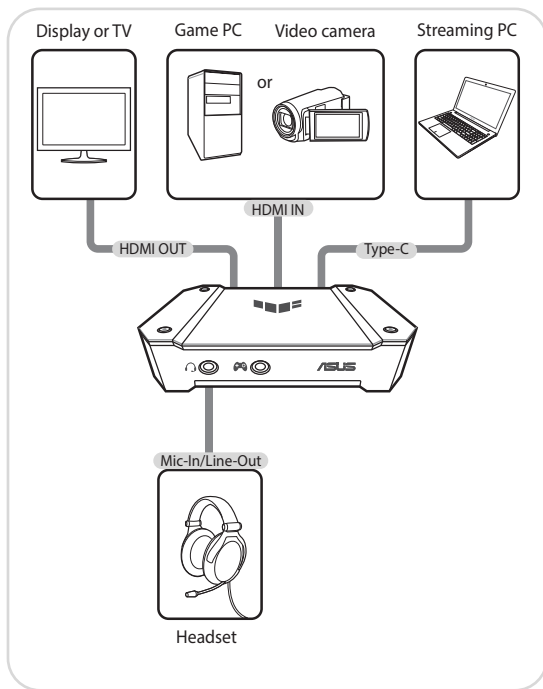
Interface	USB 3.2 Gen1x1 Type-C®
Video input	HDMI 2.0
Video output (loop-out)	HDMI 2.0
Audio input	HDMI 2.0
Audio output (loop-out)	HDMI 2.0
Video input resolution	4k@60Hz HDR/2K@144Hz HDR/1080P@240Hz HDR
Max. video resolution (loop-out)	4k@60Hz HDR/2K@144Hz HDR/1080P@240Hz HDR
Max. resolution of video recording	USB 3.2 Gen1x1: uncompressed 2160p30/1440p60/1080p120/1080p60/1080p30/720p60/ 720p30/576p/480p USB 2.0: uncompressed 720p30
Audio mixing input	3.5mm headset, 3.5mm game consoles
Supported game consoles	PlayStation, Xbox, Switch
Lighting effect	Full color LED
Dimensions	105mm (W) x 80mm (D) x 20.6mm (H)
Weight	173.7 (g)
Accessories	Quick Start Guide x 1 HDMI 2.0 cable x 1 USB 3.2 Gen1x1 Type-C® to Type A cable x1 USB-A to USB-C® adapter x 1 3.5mm to 3.5mm audio cable x 1

System requirements

System requirements	A desktop PC or Notebook PC with a USB 3.2 Gen1x1 port
Desktop PC	
CPU	<ul style="list-style-type: none">• Intel® Core™ i5-6xxx or above Recommended: Intel® Core™ i7-6xxxx or above• AMD Ryzen™ 5 1xxx or above Recommended: AMD Ryzen™ 7 1xxxx or above
Memory	Above 8GB dual channel system memory Recommended: Above 16GB dual channel system memory
Graphics Card	<ul style="list-style-type: none">• Above NVIDIA® GeForce® GTX660 Recommended: NVIDIA® GeForce® GTX 1060 or above• AMD Radeon™ HD7870 or above Recommended: AMD Radeon™ RX570 or above
Notebook PC	
CPU	<ul style="list-style-type: none">• Intel® Core™ i7-4810MQ or above Recommended: Intel® Core™ i7-7700HQ or above• AMD Ryzen™ 5 3500U or above Recommended: AMD Ryzen™ 5 3550H or above
Memory	Above 8GB dual channel system memory Recommended: Above 16GB dual channel system memory
Graphics Card	NVIDIA® GeForce® GTX 870M or above Recommended: NVIDIA® GeForce® GTX 1050 Ti or above AMD Radeon™ HD 8970M or above Recommended: AMD Radeon™ RX570 or above

Connecting display devices

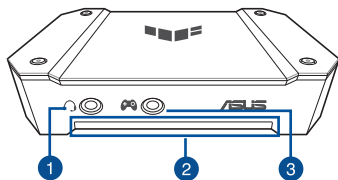
Connect the signal cables to the corresponding ports on CU4K30. Refer to the following for the display and audio connectors and their corresponding ports.



NOTE: The product does not support viewing, recording and live streaming of HDCP-protected signals.

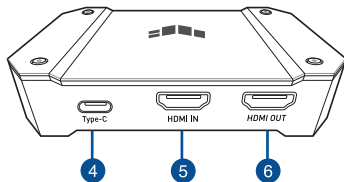
認識您的 CU4K30

前視圖



1. 耳機連接埠
2. LED 指示燈
3. Game pad 連接埠

後視圖



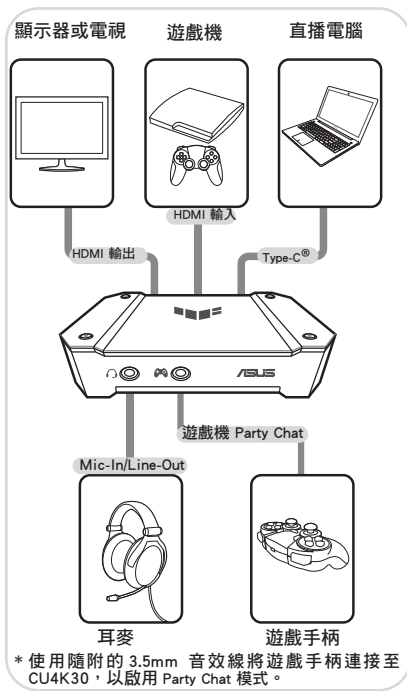
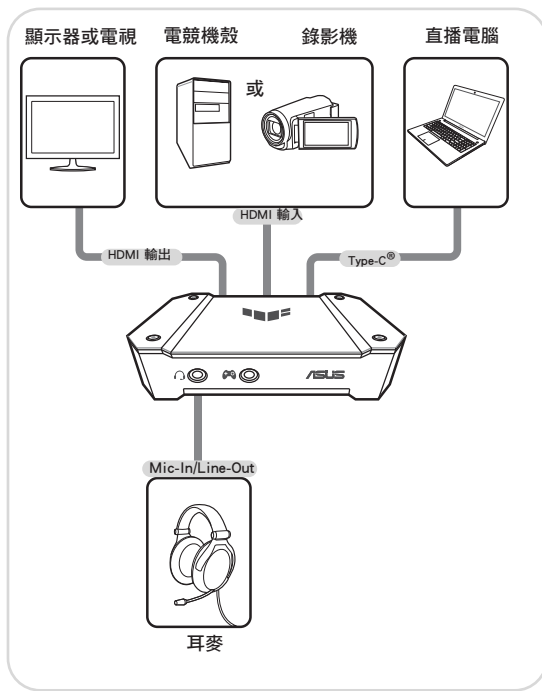
4. USB 3.2 Gen1x1 Type-C® 連接埠
5. HDMI 訊號輸入連接埠
6. HDMI 訊號輸出連接埠

LED 指示燈

狀態	LED 指示燈	說明
運作中	綠色恆亮	待機模式 (USB 2.0)
	藍色恆亮	待機模式 (USB 3.2 Gen1x1)
	色彩循環燈效	運作模式 (派對模式已啟用)
	彩虹燈效	運作模式 (派對模式已關閉)
	紅色恆亮	HDCP / 解析度切換未支援
	紅色閃爍	裝置 / USB 異常
韌體升級中	黃色閃爍	HDMI 訊號輸入中斷
	橙色呼吸	韌體升級中
	橙色恆亮	韌體升級成功
	紅色閃爍	韌體升級失敗

連接顯示裝置

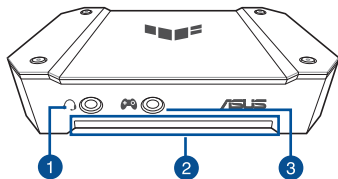
將訊號線插入 CU4K30 的對應連接埠。請參考下圖找到顯示和音效接頭及其對應的相關連接埠。



注意：本產品不支援觀看、錄製或串流受 HDCP 技術保護的內容。

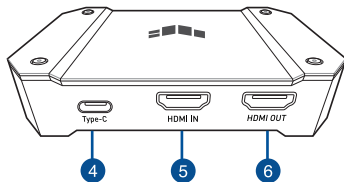
认识您的 CU4K30

前视图



1. 耳机接口
2. LED 指示灯
3. Game pad 接口

后视图



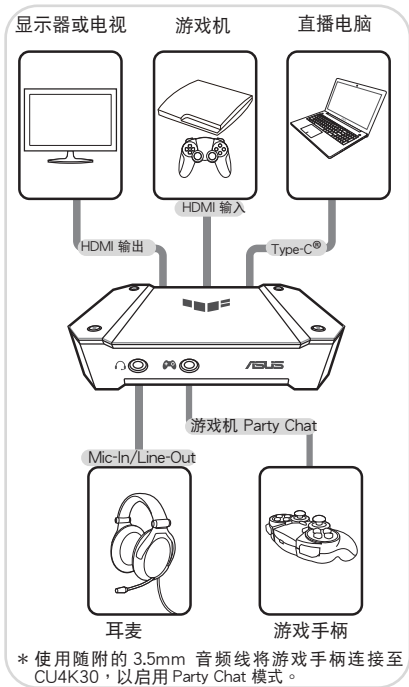
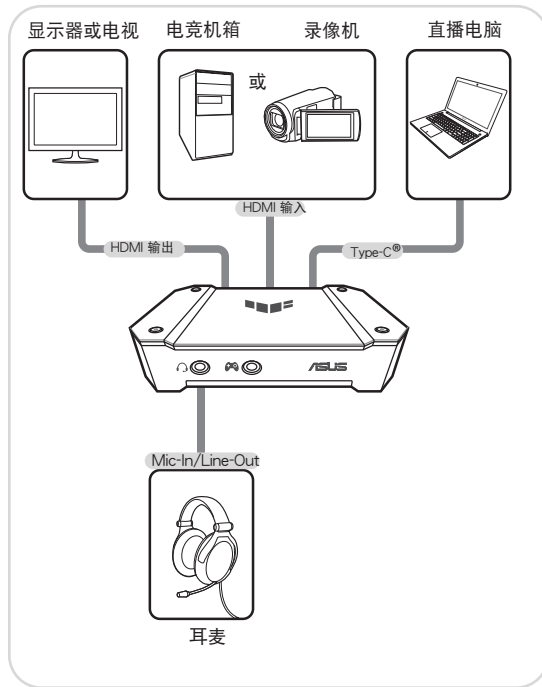
4. USB 3.2 Gen1x1 Type-C® 接口
5. HDMI 信号输入接口
6. HDMI 信号输出接口

LED 指示灯

状态	LED 指示灯	说明
运行中	绿色恒亮	待机模式 (USB 2.0)
	蓝色恒亮	待机模式 (USB 3.2 Gen1x1)
	色彩循环灯效	运行模式 (派对模式已启用)
	彩虹灯效	运行模式 (派对模式已关闭)
	红色恒亮	HDCP / 分辨率切换未支持
	红色闪烁	设备 / USB 异常
	黄色闪烁	HDMI 信号输入中断
固件升级中	橙色呼吸	固件升级中
	橙色恒亮	固件升级成功
	红色闪烁	固件升级失败

连接显示设备

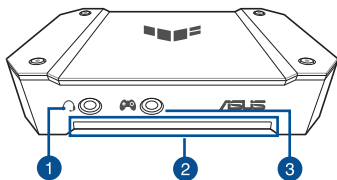
将信号线插入 CU4K30 的对应接口。请参考下图找到显示和音频接头及其对应的相关接口。



注意：本产品不支持观看、录制或串流受 HDCP 技术保护的内容。

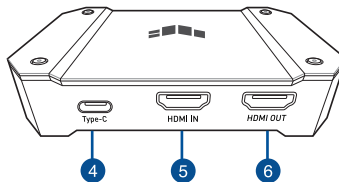
Présentation de votre CU4K30

Vue avant



1. Port casque
2. Voyant LED
3. Port pour manette

Vue arrière



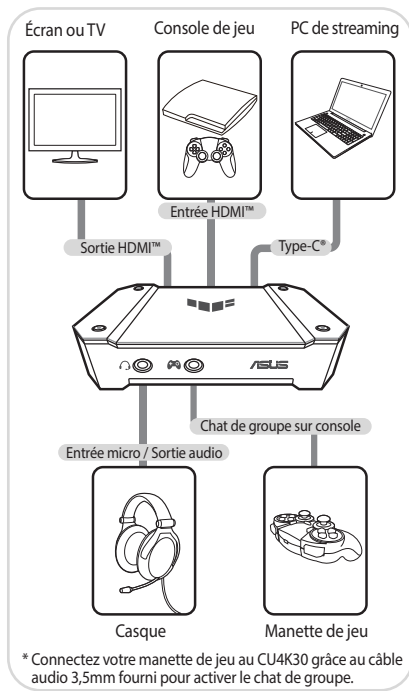
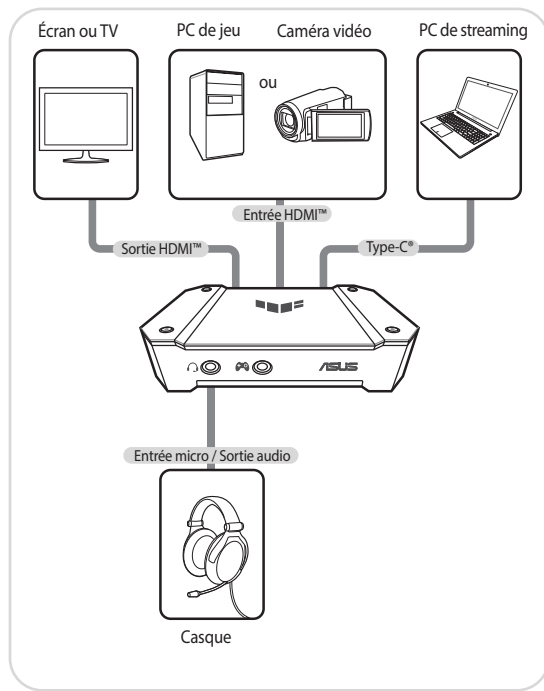
4. USB 3.2 Gen1x1 Type-C®
5. Port d'entrée HDMI
6. Port de sortie HDMI™

Indications de la LED

État	Voyant LED	Indications
Travail	Vert fixe	Mode veille (USB 2.0)
	Bleu fixe	Mode veille (USB 3.2 Gen1x1)
	Effet cycle de couleurs	En fonctionnement (Mode Groupe (Party) activé)
	Effet arc-en-ciel	En fonctionnement (Mode Groupe (Party) désactivé)
	Rouge fixe	Échec de mise à l'échelle/HDCP
	Rouge clignotant	Périphérique/USB anormal
	Jaune clignotant	Entrée HDMI interrompue
Mise à jour du firmware	Pulsation orange	Mise à jour du firmware
	Orange fixe	Firmware correctement mis à jour
	Rouge clignotant	Échec de la mise à jour du firmware

Connexion aux périphériques d'affichage

Connectez les câbles de signal aux ports correspondants sur le CU4K30. Consultez le schéma ci-dessous pour une représentation des connecteurs vidéo/audio et de leurs ports correspondants.

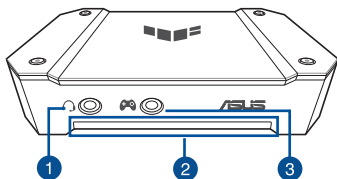


* Connectez votre manette de jeu au CU4K30 grâce au câble audio 3,5mm fourni pour activer le chat de groupe.

NOTE : Ce produit ne permet pas le visionnage, l'enregistrement et la diffusion en streaming des signaux HDCP.

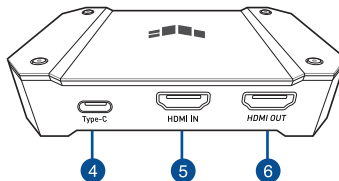
Kennenlernen Ihrer CU4K30

Frontseite



1. Headset-Anschluss
2. LED-Anzeige
3. Gamepad-Anschluss

Rückseite



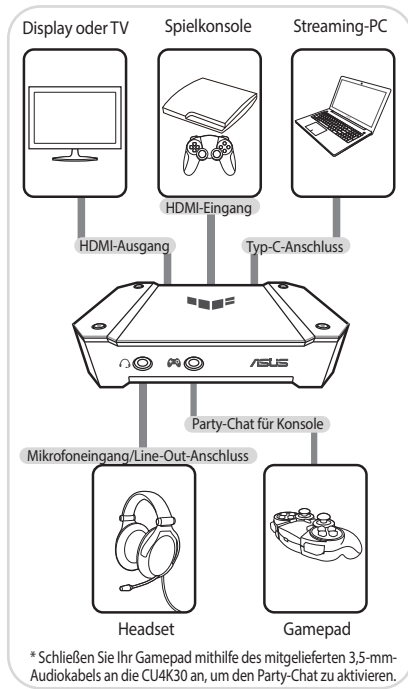
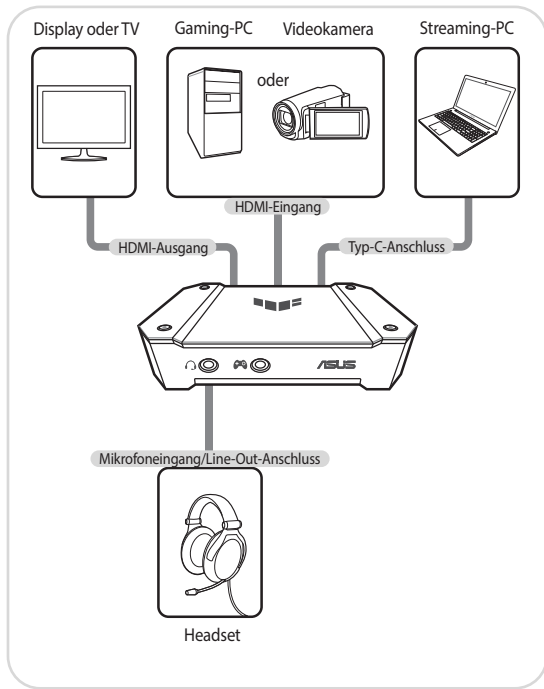
4. USB 3.2 (Gen1x1) Typ-C®-Anschluss
5. HDMI-Eingang
6. HDMI-Ausgang

LED-Anzeigen

Status	LED-Anzeige	Beschreibung
In Betrieb	Dauerhaft grün	Standby-Modus (USB 2.0)
	Dauerhaft blau	Standby-Modus (USB 3.2 (Gen1x1))
	Farbwechseleffekt	Betriebsmodus (Partymodus ein)
	Regenbogeneffekt	Betriebsmodus (Partymodus aus)
	Dauerhaft rot	HDCP/Upscaling oder Downscaling ist fehlgeschlagen
	Blinkt rot	Gerät/USB arbeitet fehlerhaft
	Blinkt gelb	HDMI-Eingang wurde getrennt
Firmware-Aktualisierung	Pulsiert orange	Firmware-Aktualisierung
	Dauerhaft orange	Firmware wurde erfolgreich aktualisiert
	Blinkt rot	Firmware-Aktualisierung fehlgeschlagen

Anschließen von Displays

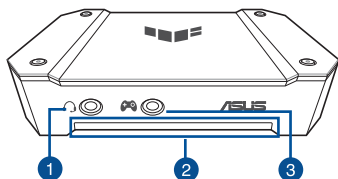
Verbinden Sie die Signalkabel mit den zugehörigen Anschlüssen an der CU4K30. Finden Sie in der folgenden Übersicht die Display- und Audiostecker sowie die zugehörigen Anschlüsse.



HINWEIS: Das Produkt unterstützt keine Anzeige, Aufzeichnung und kein Live-Streaming von HDCP-geschützten Signalen.

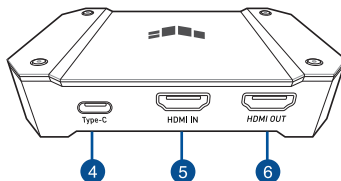
Conoscete il vostro CU4K30

Vista anteriore



1. Porta cuffie
2. Indicatore LED
3. Porta Gamepad

Vista posteriore



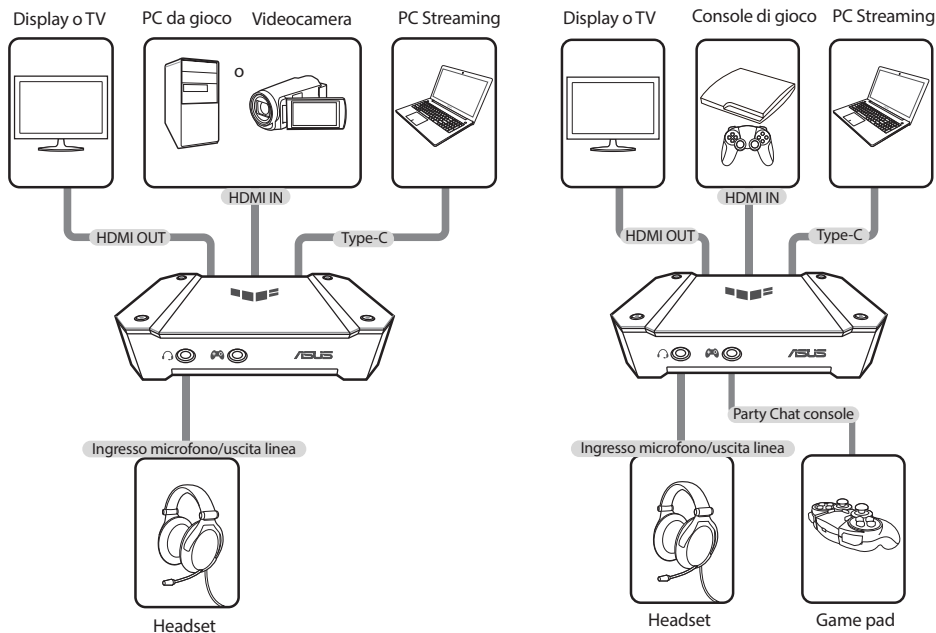
4. USB 3.2 Gen1x1 di tipo C®
5. Porta ingresso HDMI
6. Porta uscita HDMI

Guida all'indicatore LED

Stato	Indicatore LED	Significato
Funzionamento	Verde fisso	Modalità di standby (USB 2.0)
	Blu fisso	Modalità di standby (USB 3.2 Gen1x1)
	Effetto ciclo colore	Modalità di funzionamento (Modalità party attiva)
	Effetto arcobaleno	Modalità di funzionamento (Modalità party disattiva)
	Rosso fisso	Errore di HDCP/upscaling o downscaling
	Rosso lampeggiante	Comportamento anomalo di dispositivo/USB
Aggiornamento del firmware	Giallo lampeggiante	Ingresso HDMI interrotto
	Arancione respiro	Aggiornamento del firmware
	Arancione fisso	Aggiornamento del firmware completato
	Rosso lampeggiante	Aggiornamento del firmware non riuscito

Collegamento dei monitor

Collegate i cavi del segnale alle porte corrispondenti su CU4K30. Per ulteriori informazioni sui connettori audio e video, e le porte corrispondenti, fate riferimento alla seguente illustrazione.

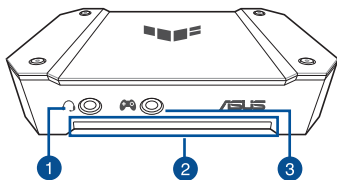


* Collegare il game pad a CU4K30 con il cavo audio da 3,5 mm in dotazione per abilitare Party Chat. 2.

NOTA: Il prodotto non supporta visualizzazione, registrazione e live streaming di contenuti protetti HDCP.

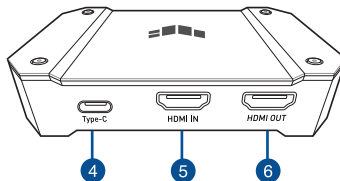
Знакомство с устройством

Вид спереди



1. Разъем для наушников
2. Индикатор
3. Разъем для геймпада

Вид сзади



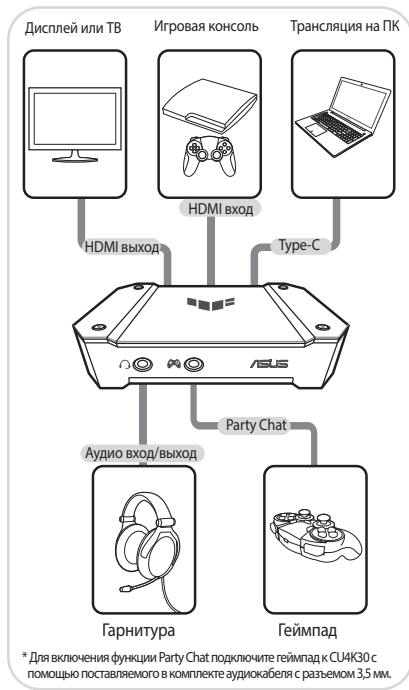
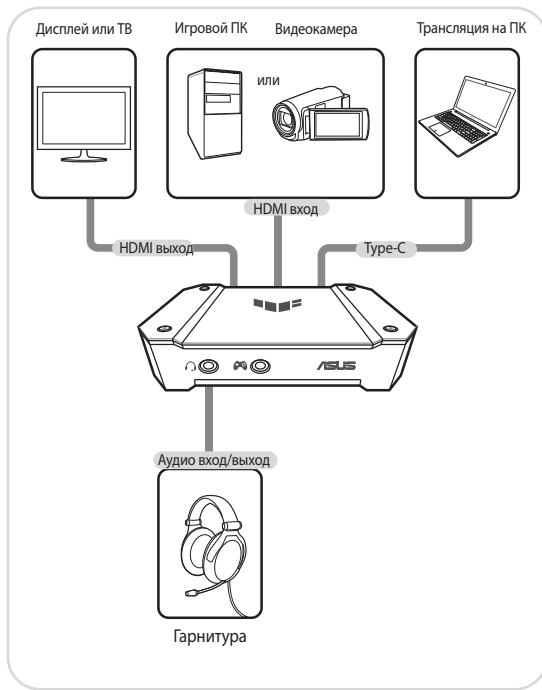
4. USB 3.2 Gen1x1 Type-C
5. HDMI вход
6. HDMI выход

Индикаторы

Состояние	Индикатор	Описание
Работает	Горит зеленым	Режим ожидания (USB 2.0)
	Горит синим	Режим ожидания (USB 3.2 Gen1x1)
	Цветовой цикл	Рабочий режим (включен режим вечеринки)
	Эффект радуги	Рабочий режим (выключен режим вечеринки)
	Горит красным	Ошибка HDCP/Upscaling или downscaling
	Мигает красным	Неисправность устройства/USB
	Мигает желтым	Ошибка на входе HDMI
Обновление прошивки	Медленно мигает оранжевым	Обновление прошивки
	Горит оранжевым	Прошивка успешно обновлена
	Мигает красным	Ошибка обновления прошивки

Подключение монитора

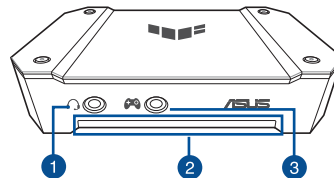
Подключите сигнальные кабели к соответствующим портам устройства. Информацию о разъемах видео и аудио смотрите ниже.



ПРИМЕЧАНИЕ: Продукт не поддерживает просмотр, запись и трансляцию сигналов с защитой HDCP.

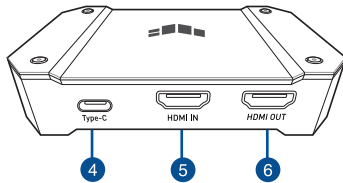
تعرف على CU4K30

المنظر الأمامي



1. منفذ سماعة الرأس
2. مؤشر بيان الحالة
3. منفذ لوحة الألعاب

المنظر الخلفي



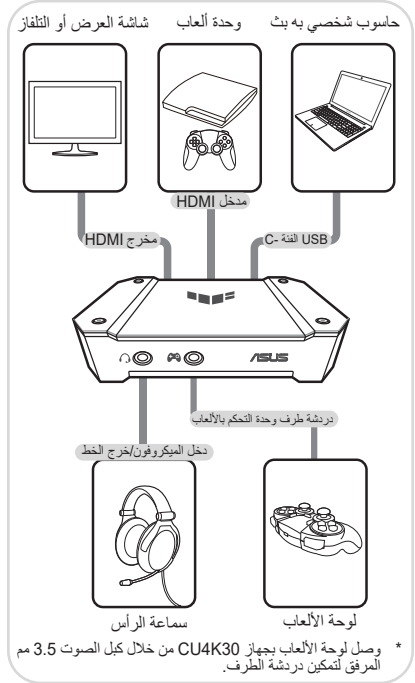
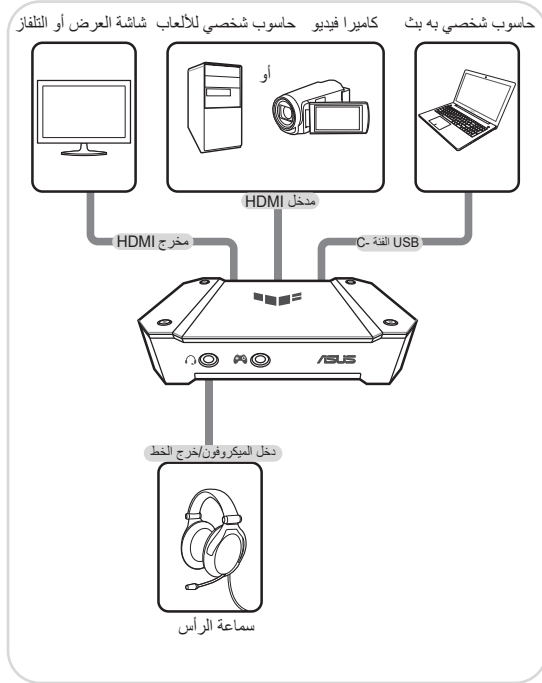
4. منفذ USB 3.2 الجيل الأول 1x1 الفئة -C
5. منفذ دخل HDMI
6. منفذ خرج HDMI

دلالات مؤشرات LED

الدلالات	مؤشر LED بيان الحالة	الحالة
وضع الاستعداد (USB 2.0)	أخضر ثابت	يعمل
وضع الاستعداد (USB 3.2 الجيل الأول 1x1)	أزرق ثابت	
وضع التشغيل (وضع الحلقة يعمل)	تأثير الدائرة اللونية	
وضع التشغيل (وضع الحلقة متوقف)	تأثير قوس قزح	
فشل رفع المستوى/HDCP أو فشل خفض المستوى	أحمر ثابت	
الجهاز/USB غير طبيعي	أحمر وامض	
تمت مقاطعة مدخل HDMI	أصفر وامض	ترقية البرنامج الثابت
ترقية البرنامج الثابت	برتقالي متقطع	
تمت ترقية البرنامج الثابت بنجاح	برتقالي ثابت	
فشلت ترقية البرنامج الثابت	أحمر وامض	

توصيل أجهزة شاشة العرض

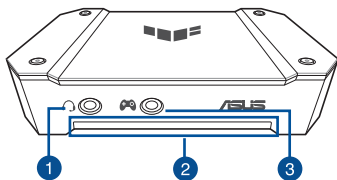
وصل كبلات الإشارة بالمنافذ المتوافقة معها الموجودة على CU4K30. ارجع إلى ما يلي لمعرفة موصلات الصوت وشاشة العرض والمنافذ خاصتهم.



الملاحظة: المنتج لا يدعم عرض الإشارات المحمية بتقنية HDCP وتسجيلها والبث المباشر لها.

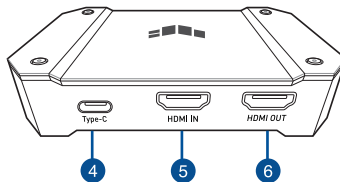
Upoznavanje s CU4K30

Pogled sprijeda



1. Priključak za slušalice
2. LED indikator
3. Priključak podloge za igru

Prikaz straga



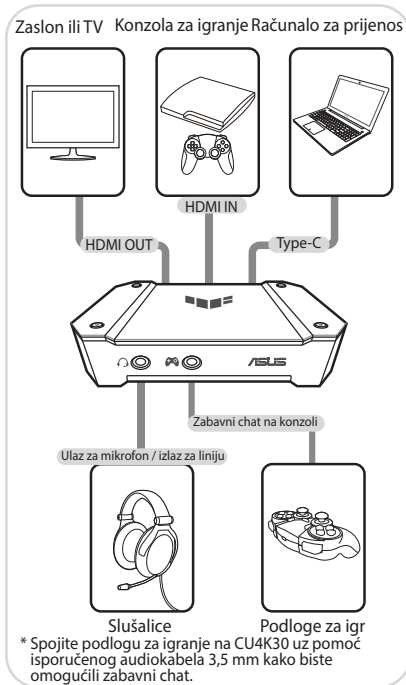
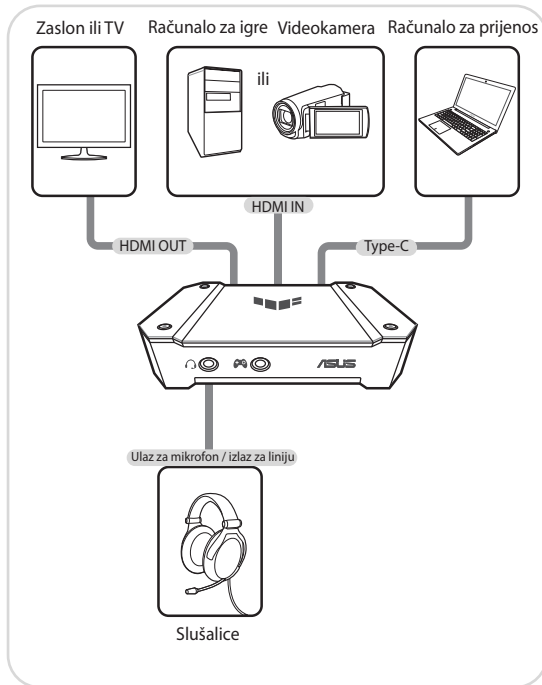
4. USB 3.2 Gen1x1 Type-C®
5. Priključak HDMI IN
6. Priključak HDMI OUT

LED signalizacija

Stanje	LED indikator	Signalizacija
Rad	Stalno zeleno	Način rada u pripravnosti (USB 2.0)
	Stalno plavo	Način rada u pripravnosti (USB 3.2 Gen1x1)
	Efekt kružne izmjene boja	Radni način rada (Način rada za zabavu uključen)
	Efekt duge	Radni način rada (Način rada za zabavu isključen)
	Stalno crveno	HDCP/Povećanje ili smanjenje razlučivosti neuspjelo
	Trepće crveno	Uređaj/USB nepravilan
	Trepće žuto	HDMI ulaz u prekidu
Nadogradnja firmvera	Pulsira narančasto	Nadogradnja firmvera
	Stalno narančasto	Nadogradnja firmvera je uspjela
	Trepće crveno	Nadogradnja firmvera nije uspjela

Spajanje uređaja za prikaz

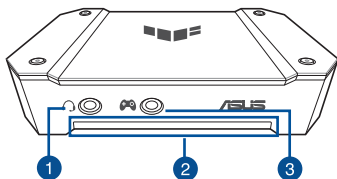
Spojite signalne kabele na odgovarajuće priključke na CU4K30. Pogledajte u nastavku priključke za prikaz i zvuk i njihove odgovarajuće ulaze.



NAPOMENA: Proizvod ne podržava prikaz, snimanje i prijenos uživo HDCP zaštićenih signala.

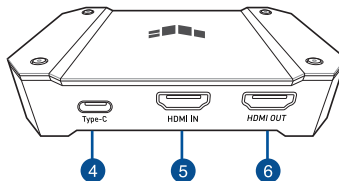
Seznámení s jednotkou CU4K30

Pohled zepředu



1. Port pro sluchátka
2. Indikátor LED
3. Port pro herní ovladač

Pohled zezadu



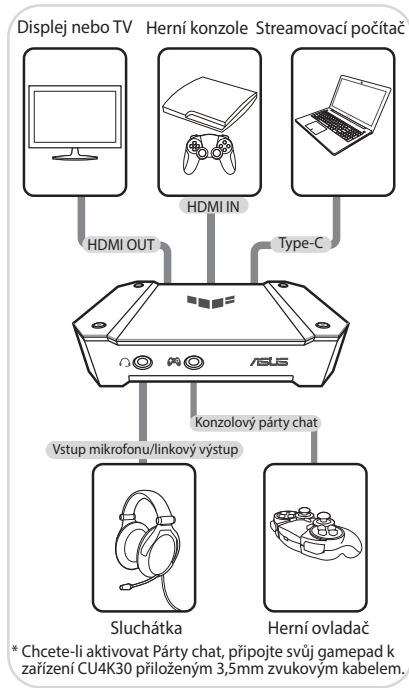
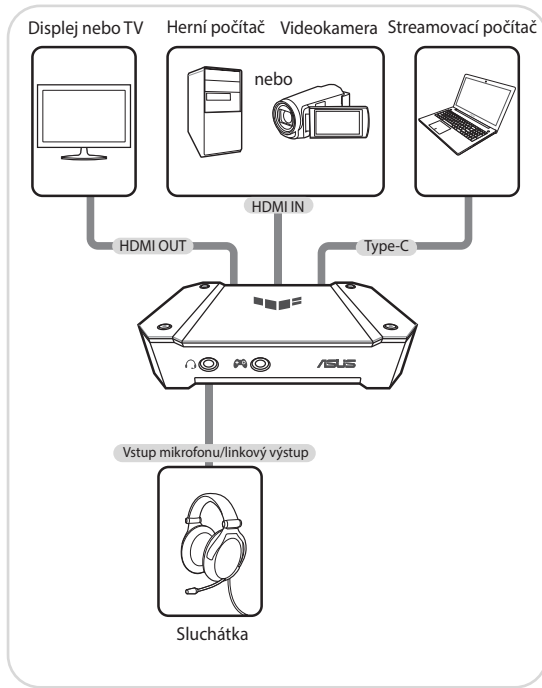
4. USB 3.2 Gen1x1 Type-C®
5. Port HDMI IN
6. Port HDMI OUT

Indikace LED

Stav	Indikátor LED	Indikace
Činnost	Statická zelená	Pohotovostní režim (USB 2.0)
	Statická modrá	Pohotovostní režim (USB 3.2 Gen1x1)
	Efekt barevný cyklus	Pracovní režim (Party režim zapnutý)
	Efekt duha	Pracovní režim (Party režim vypnutý)
	Statická červená	Chyba HDCP/přeškálování
	Blikající červená	Abnormální zařízení/USB
	Blikající žlutá	Vstup HDMI přerušen
Upgradování firmwaru	Pulzující oranžová	Upgradování firmwaru
	Statická oranžová	Firmware byl úspěšně upgradován
	Blikající červená	Upgrade firmwaru se nezdařil

Připojení zobrazovacích zařízení

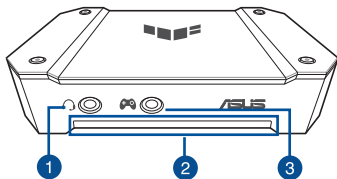
Připojte signálové kabely k příslušným portům na jednotce CU4K30. Níže jsou uvedeny informace o obrazových a zvukových konektorech a jejich příslušných portech.



POZNÁMKA: Produkt nepodporuje zobrazení, záznam ani živý streaming signálů chráněných technologií HDCP.

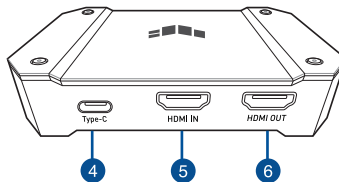
Kennismaken met uw CU4K30

Vooraanzicht



1. Headset aansluiting
2. LED-indicator
3. Gamepad-aansluiting

Achteraanzicht



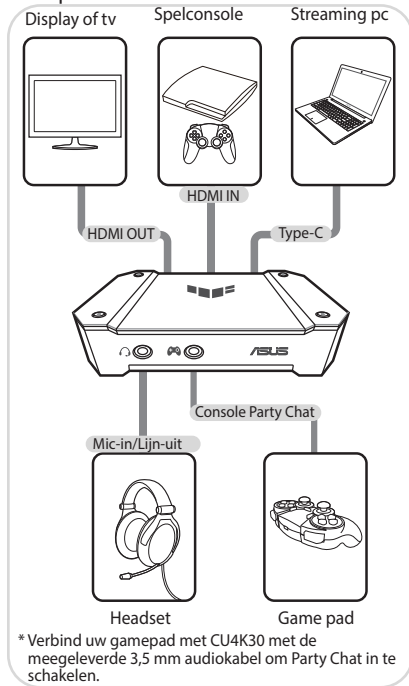
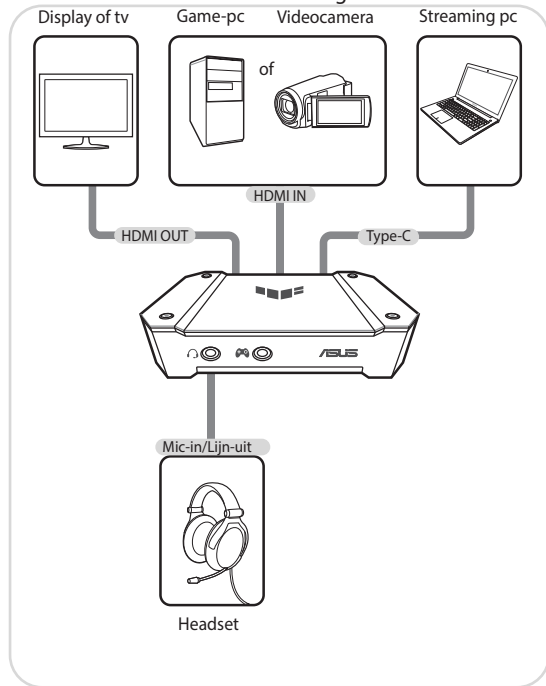
4. USB 3.2 Gen1x1 Type-C®
5. HDMI IN-aansluiting
6. HDMI OUT-aansluiting

LED-indicaties

Status	LED-indicator	Indicaties
Werken	Groen	Stand-bymodus (USB 2.0)
	Blauw	Stand-bymodus (USB 3.2 Gen1x1)
	Kleurencyclus-effect	Werkmodus (Partymodus aan)
	Regenboog-effect	Werkmodus (Partymodus uit)
	Rood	HDCP / Upscaling of downscaling mislukt
	Knipperend rood	Apparaat/USB abnormaal
	Knipperend geel	HDMI-ingang onderbroken
Firmware bijwerken	Ademend oranje	Firmware bijwerken
	Oranje	Firmware is bijgewerkt
	Knipperend rood	Firmware-upgrade mislukt

Weergaveapparaten aansluiten

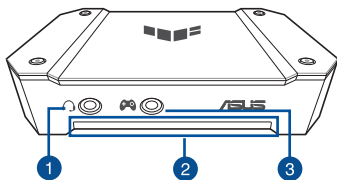
Sluit de signaalkabels aan op de overeenkomende poorten op de CU4K30. Raadpleeg het volgende voor de beeld- en audio-aansluitingen en hun overeenkomende poorten.



OPMERKING: Het product biedt geen ondersteuning voor het bekijken, opnemen en live streamen van HDCP-beschermde signalen.

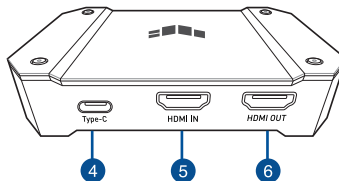
Γνωριμία με το CU4K30

Μπροστινή πλευρά



1. Θύρα ακουστικών
2. Ενδεικτική λυχνία LED
3. Θύρα Game pad

Πίσω όψη



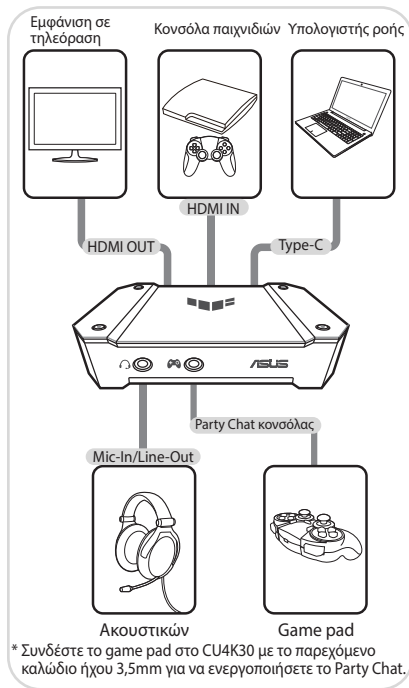
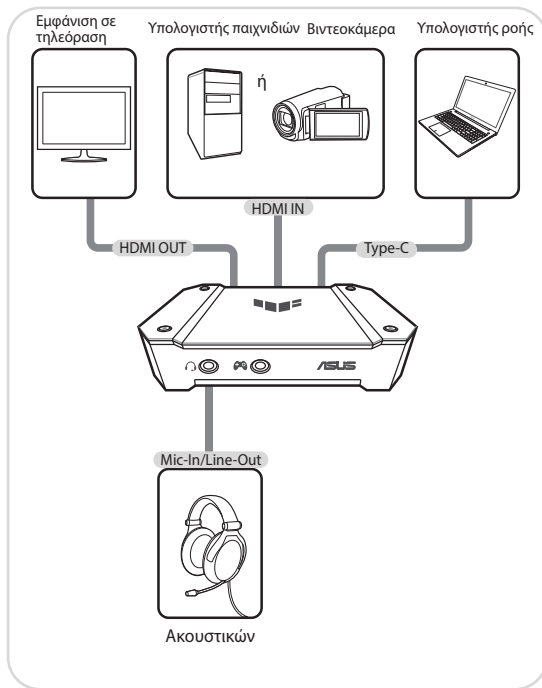
4. USB 3.2 Gen1x1 Type-C®
5. Θύρα HDMI IN
6. Θύρα HDMI OUT

Ενδείξεις λυχνίας LED

Κατάσταση	Ενδεικτική λυχνία LED	Ενδείξεις
Σε λειτουργία	Σταθερά πράσινο	Κατάσταση αναμονής (USB 2.0)
	Σταθερά μπλε	Κατάσταση αναμονής (USB 3.2 Gen1x1)
	Εφέ κύκλου χρωμάτων	Κατάσταση λειτουργίας (Λειτουργία Party ενεργοποιημένη)
	Εφέ ουράνιου τόξου	Κατάσταση λειτουργίας (Λειτουργία Party απενεργοποιημένη)
	Σταθερά κόκκινο	HDCP/Αποτυχία αναβάθμισης ή υποβάθμισης
	Κόκκινο που αναβοσβήνει	Ακατάλληλη Συσκευή/USB
	Κίτρινο που αναβοσβήνει	Διακοπή εισόδου HDMI
Αναβάθμιση υλικολογισμικού	Πορτοκαλί που αναβοσβήνει	Αναβάθμιση υλικολογισμικού
	Σταθερά πορτοκαλί	Επιτυχής αναβάθμιση υλικολογισμικού
	Κόκκινο που αναβοσβήνει	Αποτυχία αναβάθμισης υλικολογισμικού

Σύνδεση οθόνών

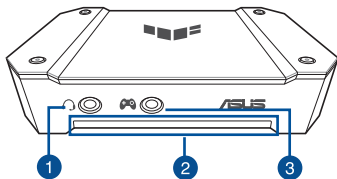
Συνδέστε τα καλώδια σήματος στις αντίστοιχες θύρες του CU4K30. Ανατρέξτε παρακάτω για τα βύσματα οθόνης και ήχου και τις αντίστοιχες θύρες τους.



ΣΗΜΕΙΩΣΗ: Το προϊόν δεν υποστηρίζει προβολή, εγγραφή και ζωντανή ροή σημάτων με προστασία HDCP.

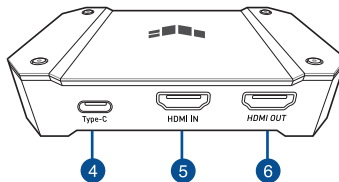
Ismerje meg a CU4K30-at

Előnézet



1. Fejhallgató port
2. LED jelzőfény
3. Játékgépport

Hátulnézet



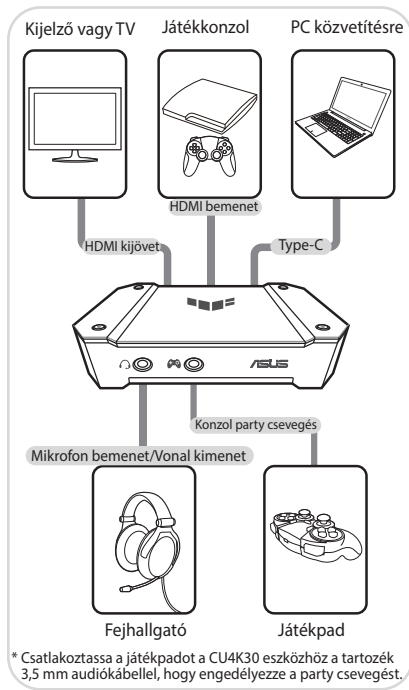
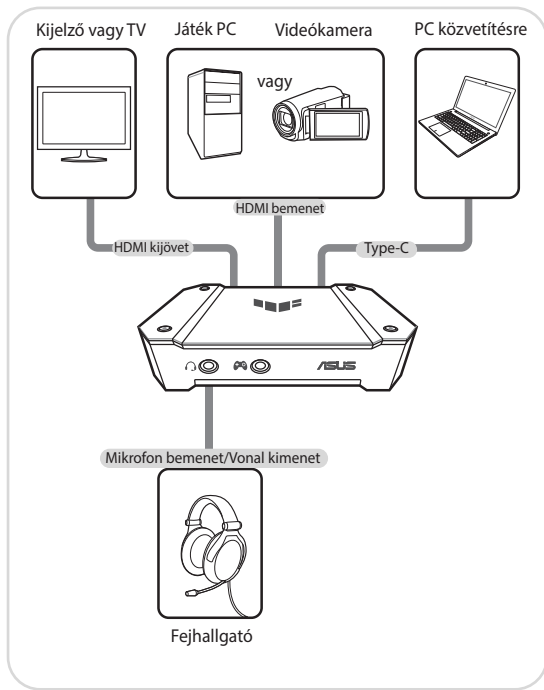
4. USB 3.2 Gen1x1 Type-C®
5. HDMI bemenet port
6. HDMI kimenet port

LED jelzések

Állapot	LED jelzőfény	Jelzések
Dolgozik	Folyamatos zöld	Készenlét mód (USB 2.0)
	Folyamatos kék	Készenlét mód (USB 3.2 Gen1x1)
	Színciklus effektus	Munka mód (Party mód be)
	Szivárvány effektus	Munka mód (Party mód ki)
	Folyamatos piros	HDCP/Felskálázás vagy leskálázás sikertelen
	Villogó piros	Eszköz/USB nem normális
	Villogó sárga	HDMI bemenet megszakítva
Firmware frissítés	Lélegző narancs	Firmware frissítés
	Folyamatos narancs	Firmware frissítés sikeres
	Villogó piros	Firmware frissítés sikertelen

Kijelző eszközök csatlakoztatása

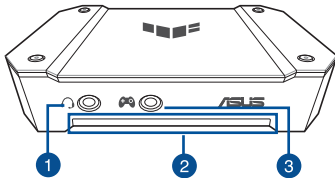
Csatlakoztassa a jelkábeleket a CU4K30 megfelelő portjaihoz Tanulmányozza az alábbiakat a kijelző és audio csatlakozókhoz és a megfelelő portokhoz.



MEGJEGYZÉS: Ez a termék nem támogatja a HDCP-védett jelek megtekintését, rögzítését és élő közvetítését.

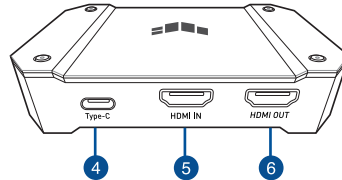
Mengenal CU4K30

Tampilan depan



1. Port Headset
2. Indikator LED
3. Port pad game

Tampilan belakang



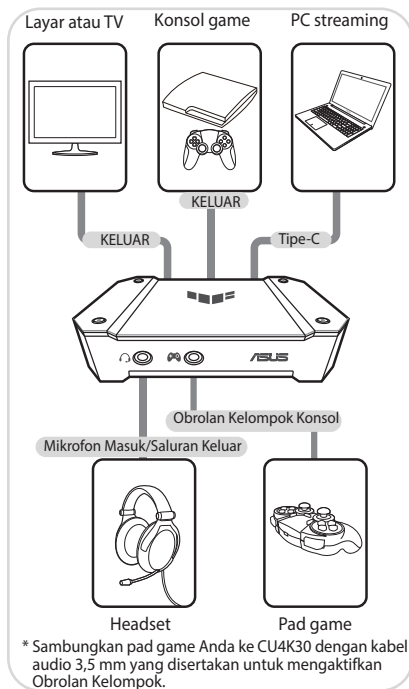
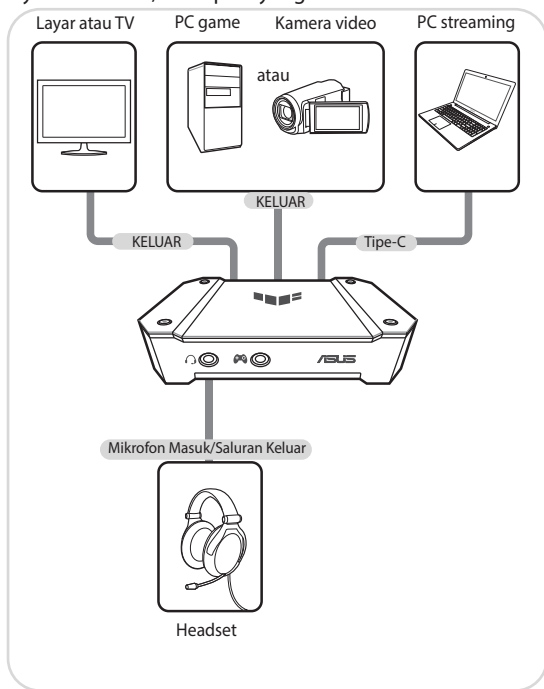
4. USB 3.2 Gen1x1 Tipe-C®
5. Port HDMI IN (MASUK)
6. Port HDMI OUT (KELUAR)

Indikator LED

Status	Indikator LED	Indikasi
Berfungsi	Hijau statis	Mode siaga (USB 2.0)
	Biru statis	Mode siaga (USB 3.2 Gen1x1)
	Efek siklus warna	Mode fungsi (Mode pesta aktif)
	Efek pelangi	Mode fungsi (Mode pesta nonaktif)
	Merah statis	Kegagalan HDCP/Peningkatan atau penurunan skala
	Merah berkedip	Perangkat/USB tidak normal
	Kuning berkedip	Input HDMI terhenti
Peningkatan firmware	Oranye berkedip pelan	Peningkatan firmware
	Oranye statis	Firmware berhasil ditingkatkan
	Merah berkedip	Gagal meningkatkan firmware

Menyambungkan perangkat layar

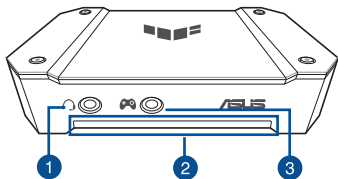
Sambungkan kabel sinyal ke port yang sesuai pada CU4K30. Lihat informasi berikut terkait konektor layar dan audio, serta port yang sesuai.



CATATAN: Produk tidak didukung tampilan, perekaman, dan streaming langsung sinyal terlindungi HDCP.

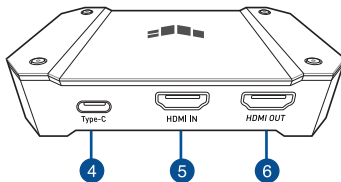
CU4K30 에 대해 알아보기

전면 패널



- 1. 헤드셋 포트
- 2. LED 표시등
- 3. 게임 패드 포트

후면도



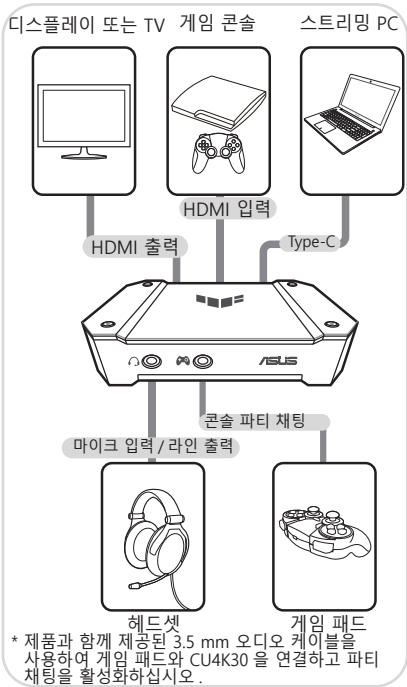
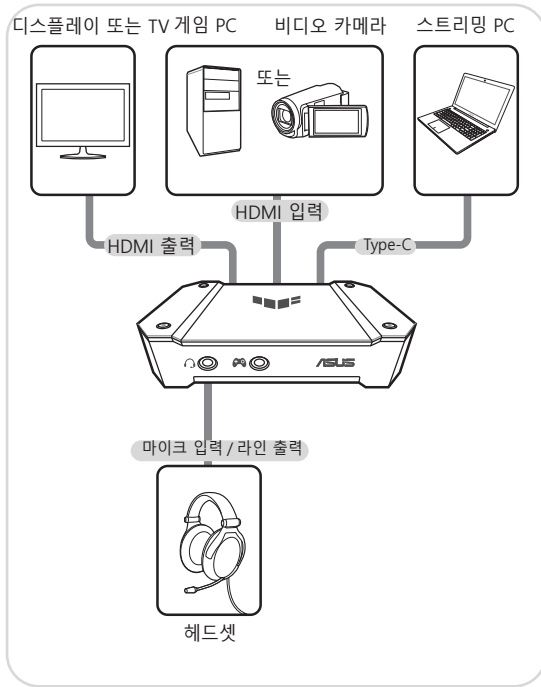
- 4. USB 3.2 Gen1x1 Type-C®
- 5. HDMI 입력 포트
- 6. HDMI 출력 포트

LED 표시

상태	LED 표시등	의미
작업 중	정적 녹색	대기 모드 (USB 2.0)
	정적 파란색	대기 모드 (USB 3.2 Gen1x1)
	색 순환 효과	작업 모드 (파티 모드 켜짐)
	무지개 효과	작업 모드 (파티 모드 꺼짐)
	정적 빨간색	HDCP/업스케일링 또는 다운스케일링 실패
	점멸 빨간색	장치/USB 비정상
펌웨어를 업그레이드하는 중	점멸 노란색	HDMI 입력이 중단됨
	브리딩 주황색	펌웨어를 업그레이드하는 중
	정적 주황색	펌웨어가 성공적으로 업그레이됨
	점멸 빨간색	펌웨어 업데이트가 실패함

디스플레이 장치 연결하기

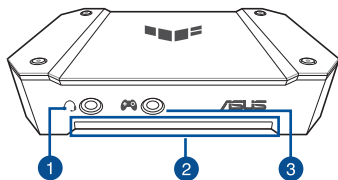
신호 케이블을 CU4K30의 해당 포트에 연결합니다. 디스플레이 및 오디오 커넥터 및 해당 포트는 다음을 참조하십시오.



참고: 이 제품은 HDCP 보호 신호의 보기, 기록 및 라이브 스트리밍을 지원하지 않습니다

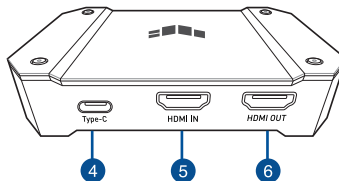
Conhecer o seu CU4K30

Vista frontal



1. Porta para auscultadores
2. Indicador LED
3. Porta para comando de jogos

Vista posterior



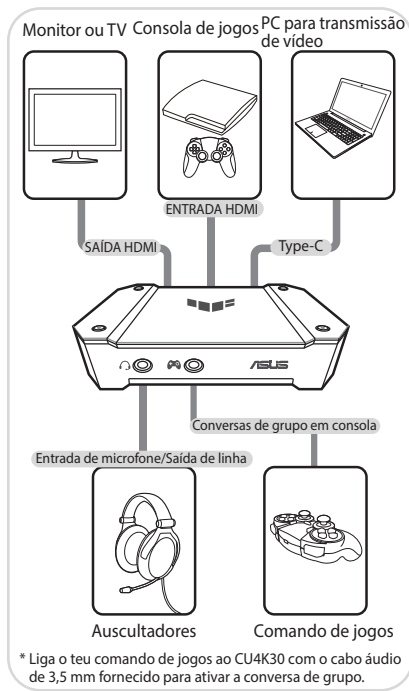
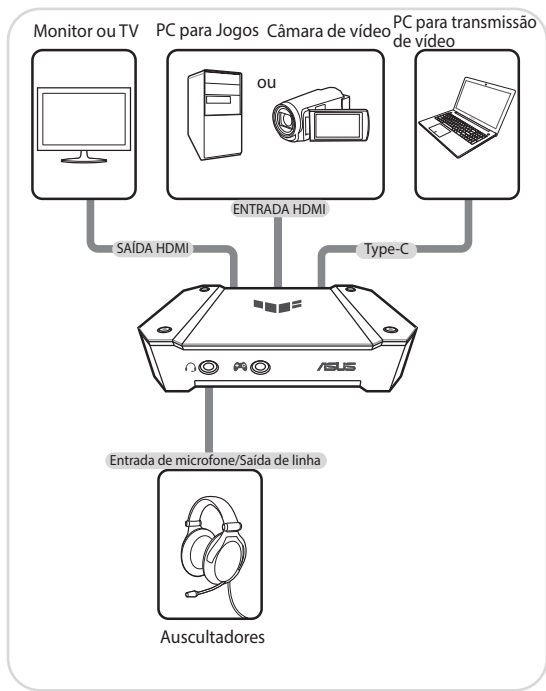
4. USB 3.2 Gen1x1 Type-C®
5. Porta de entrada HDMI
6. Porta de saída HDMI

Indicações LED

Estado	Indicador LED	Indicações
A funcionar	Verde estático	Modo de espera (USB 2.0)
	Azul estático	Modo de espera (USB 3.2 Gen1x1)
	Efeito Ciclo de cor	Modo de funcionamento (Modo Festa ativado)
	Efeito Arco-íris	Modo de funcionamento (Modo Festa desativado)
	Vermelho estático	Falha de HDCP/aumento ou diminuição de resolução
	Vermelho intermitente	Dispositivo/USB anormal
	Amarelo intermitente	Entrada HDMI interrompida
Firmware em atualização	Laranja intermitente	Firmware em atualização
	Laranja estático	Firmware atualizado com êxito
	Vermelho intermitente	A atualização de firmware falhou

Ligação de dispositivos de visualização

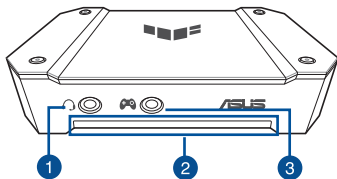
Ligue os cabos de sinal às respetivas portas do CU4K30. Consulte em seguida os conectores de monitor e de áudio e as respetivas portas.



NOTA: O produto não suporta visualização, gravação e transmissão em direto de sinais protegidos por HDCP.

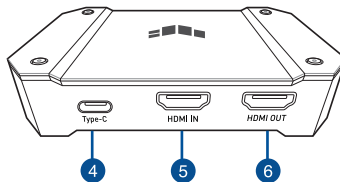
Omówienie elementów urządzenia CU4K30

Widok z przodu



1. Gniazdo słuchawek
2. Wskaźnik LED
3. Gniazdo gamepada

Widok z tyłu



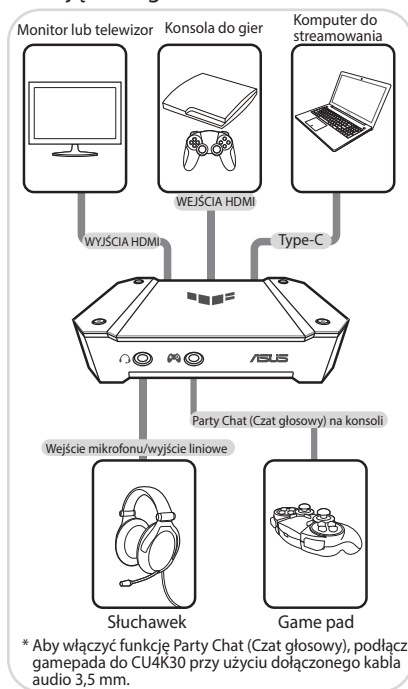
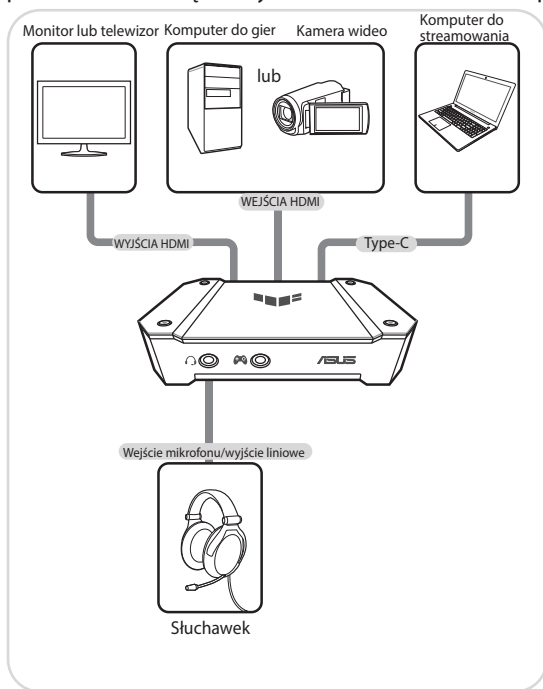
4. Port USB 3.2 Gen1x1 Type-C®
5. Gniazdo wejścia HDMI
6. Gniazdo wyjścia HDMI

Wskaźniki LED

Stan	Wskaźnik LED	Wskazania
Działanie	Świeci na zielono	Tryb gotowości (USB 2.0)
	Świeci na niebiesko	Tryb gotowości (USB 3.2 Gen1x1)
	Efekt cyklu kolorów	Tryb działania (tryb przyjęcia włączony)
	Efekt tęczy	Tryb działania (tryb przyjęcia wyłączony)
	Świeci na czerwono	Błąd HDCP/skalowania obrazu w górę lub w dół
	Miga na czerwono	Nieprawidłowe działanie urządzenia/USB
	Miga na żółto	Przerwanie sygnału wejściowego HDMI
Aktualizacja oprogramowania sprzętowego	Oddychające pomarańczowe	Aktualizacja oprogramowania sprzętowego
	Świeci na pomarańczowo	Oprogramowanie sprzętowe zostało pomyślnie zaktualizowane
	Miga na czerwono	Aktualizacja oprogramowania sprzętowego nie powiodła się

Podłączanie urządzeń wyświetlania

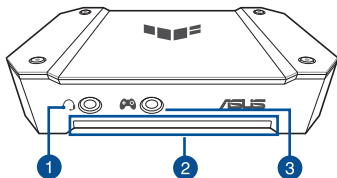
Podłącz kable sygnałowe do odpowiednich gniazd urządzenia CU4K30. Poniżej przedstawiono złącza wyświetlania i audio oraz odpowiadające im gniazda.



NOTATKA: Produkt nie obsługuje wyświetlania, nagrywania ani strumieniowego przesyłania na żywo sygnałów z zabezpieczeniem HDCP.

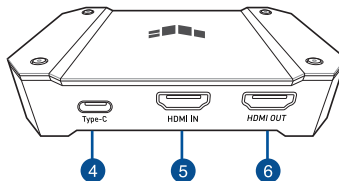
Cunoașterea CU4K30

Vedere din față



1. Port pentru cască
2. Indicator LED
3. Port pentru Game pad

Vedere din spate



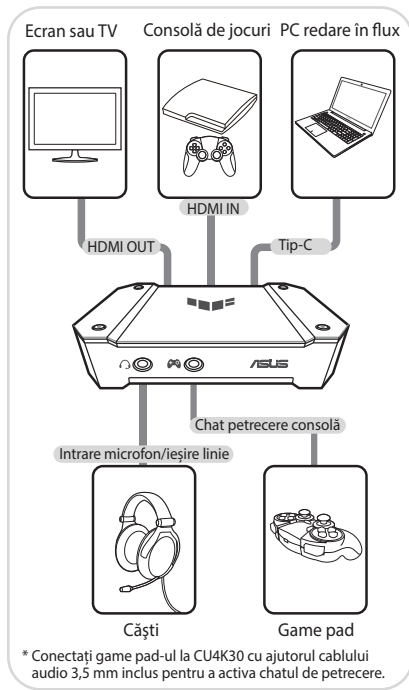
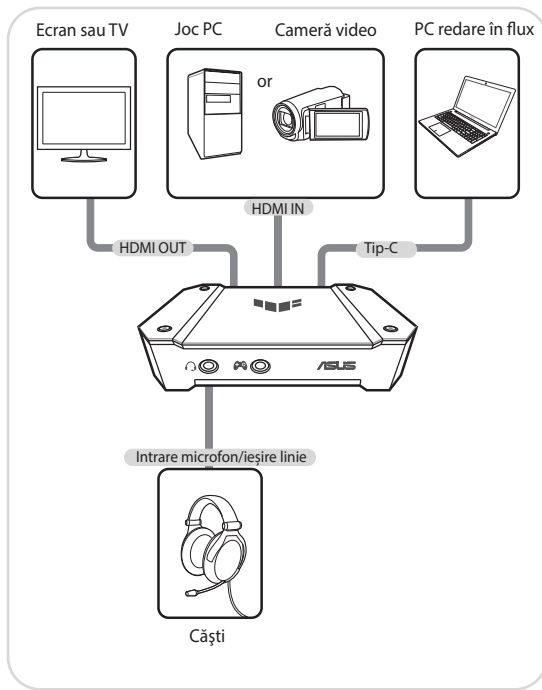
4. USB 3.2 Gen1x1 Tip-C®
5. Port HDMI IN
6. Port HDMI OUT

Indicatoare cu LED

Stare	Indicator LED	Indicatoare
Pe durata lucrului	Verde static	Mod stare de veghe (USB 2.0)
	Albastru static	Mod stare de veghe (USB 3.2 Gen1x1)
	Efect ciclu de culori	Mod de lucru (Mod petrecere activat)
	Efect de curcubeu	Mod de lucru (Mod petrecere dezactivat)
	Roșu static	Eroare HDCP/scalare ascendentă sau descendentă
	Roșu intermitent	Dispozitiv/USB anormal
	Galben intermitent	Intrarea HDMI a fost întreruptă
Actualizare firmware	Portocaliu intermitent	Actualizare firmware
	Portocaliu static	Upgrade de firmware reușit
	Roșu intermitent	Upgrade de firmware nereușit

Conectarea dispozitivelor de afișare

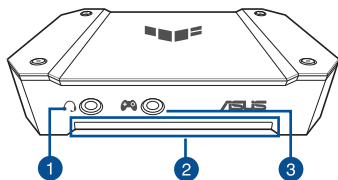
Conectați cablurile de semnal la porturile corespunzătoare de pe CU4K30. Consultați următoarele pentru afișaj și conectori audio și porturile corespunzătoare.



NOTĂ: Produsul nu acceptă vizualizarea, înregistrarea și transmiterea în direct a semnalelor protejate HDCP.

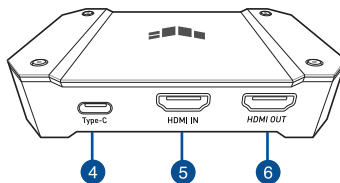
Familiarizarse con su CU4K30

Vista frontal



1. Puerto para auriculares
2. Indicador de LED
3. Puerto del Control de mando

Vista posterior



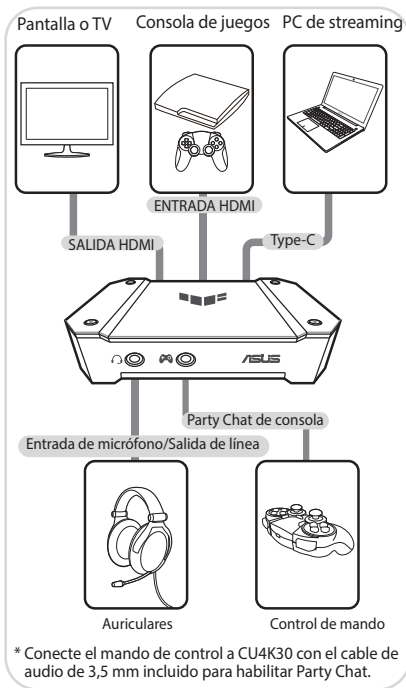
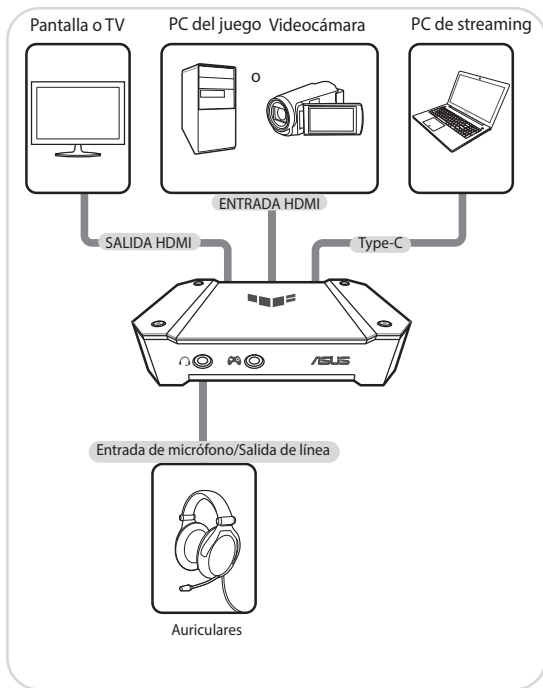
4. USB 3.2 Gen1x1 Type-C®
5. Puerto ENTRADA HDMI
6. Puerto SALIDA HDMI

Indicaciones de LED

Estado	Indicador de LED	Indicaciones
Trabajo	Verde permanente	Modo de espera (USB 2.0)
	Azul permanente	Modo de espera (USB 3.2 Gen1x1)
	Efecto de ciclo de color	Modo de trabajo (Modo de fiesta activado)
	Efecto arcoíris	Modo de trabajo (Modo de fiesta desactivado)
	Rojo permanente	Error de HDCP o aumento o descenso de escala
	Rojo intermitente	Dispositivo o USB anómalo
Amarillo intermitente	Entrada HDMI interrumpida	
Actualizando firmware	Respiración en naranja	Actualizando firmware
	Naranja estático	Firmware actualizado correctamente
	Rojo intermitente	Error al actualizar el firmware

Conectar dispositivos de visualización

Conecte los cables de señal a los puertos correspondientes en CU4K30. Consulte lo siguiente para los conectores de pantalla y audio y sus puertos correspondientes.

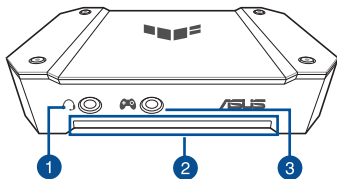


* Conecte el mando de control a CU4K30 con el cable de audio de 3,5 mm incluido para habilitar Party Chat.

NOTA: El producto no admite visualización, grabación ni streaming en vivo de señales protegidas mediante HDCP.

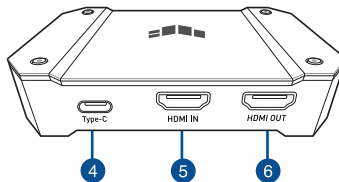
Upoznavanje sa vašim CU4K30

Pogled spreda



1. Port za slušalice sa mikrofonom
2. Indikatorska lampica
3. Igrački port

Prikaz sa zadnje strane



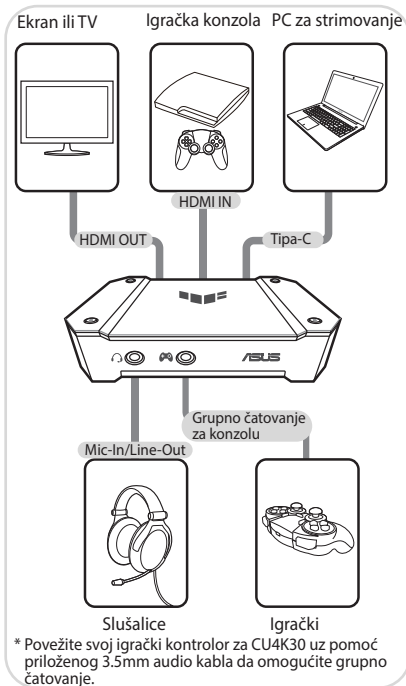
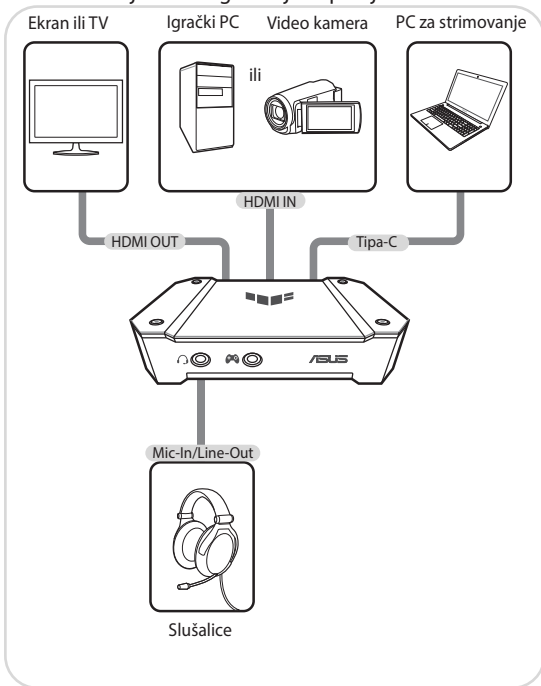
4. USB 3.2 Gen1x1 Tipa-C®
5. Port za HDMI IN
6. Port za HDMI OUT

Indikacije lampice

Status	Indikatorska lampica	Indikacije
Radi	Statična zelena	Režim pripravnosti (USB 2.0)
	Statična plava	Režim pripravnosti (USB 3.2 Gen1x1)
	Efekat cikliranja boja	Radni režim (Uključen režim za žurku)
	Efekat duge	Radni režim (Isključen režim za žurku)
	Statična crvena	HDCP/Pojačavanje ili smanjivanje nije uspešno obavljeno
	Trepćuća crvena	Uređaj/USB ne rade kako treba
	Trepćuća žuta	HDMI unos prekinut
Ažuriranje firmvera	Sporo trepćuće narandžasta	Ažuriranje firmvera
	Statična narandžasta	Firmver je uspešno ažuriran
	Trepćuća crvena	Ažuriranje firmvera nije uspelo

Povezivanje uređaja

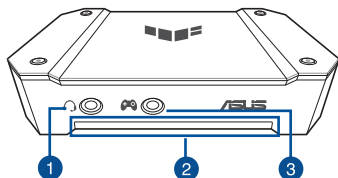
Povežite kablove sa odgovarajućim priključcima na CU4K30. Pogledajte prikaz za video i audio konektore i njihove odgovarajuće priključke.



NAPOMENA: Proizvod ne podržava pregled, snimanje i gledanje uživo HDCP zaštićenih signala.

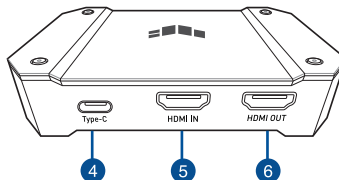
Spoznajte napravo CU4K30

Pogled od spredaj



1. Vhod za slušalke
2. Indikator LED
3. Vrata za igralno palico

Pogled od zadaj



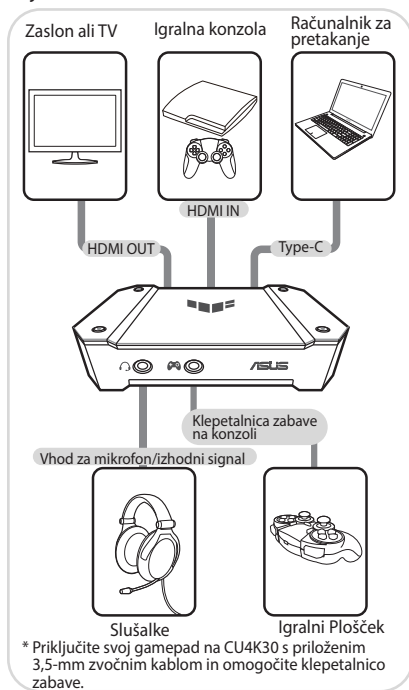
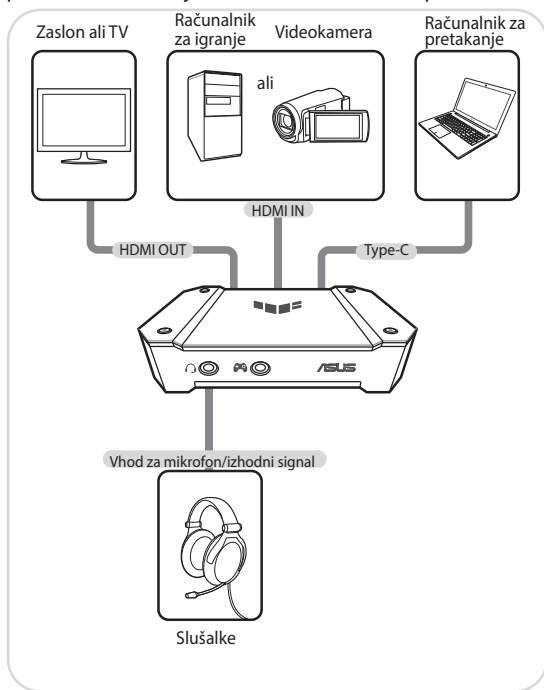
4. USB 3.2 Gen1x1 Type-C®
5. Vhod HDMI IN
6. Izhod HDMI OUT

Indikatorji LED

Stanje	Indikator LED	Indikatorji
Delovanje	Statična zelena lučka	Način pripravljenosti (USB 2.0)
	Statična modra lučka	Način pripravljenosti (USB 3.2 Gen1x1)
	Učinek barvnega kroga	Delovni način (vklop načina zabave)
	Učinek mavrice	Delovni način (izklop načina zabave)
	Statična rdeča	HDCP/raztegovanje ali krčenje ni uspelo
	Utripajoča rdeča lučka	Napaka na napravi/vhodu USB
	Utripajoča rumena lučka	Vhod HDMI je prekinjen
Nadgradnja strojno-programске opreme	Počasi utripajoča oranžna lučka	Nadgradnja strojno-programске opreme
	Statična oranžna lučka	Nadgradnja strojno-programске opreme se je uspešno zaključila
	Utripajoča rdeča lučka	Nadgradnje strojno-programске opreme ni bilo mogoče dokončati

Povezovanje prikaznih naprav

Povežite signalne kable z ustreznimi vhodi na napravi CU4K30. Če želite izvedeti več o priključkih za prikaz in zvok ter njihovih ustreznih vhodih, preberite naslednje.

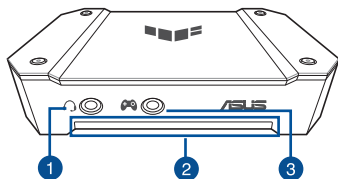


* Priključite svoj gamepad na CU4K30 s priloženim 3,5-mm zvočnim kablom in omogočite klepetalnico zabave.

OPOMBA: Izdelek ne podira prikaza, snemanja in pretočnega predvajanja v živo zaščitenih signalov HDCP.

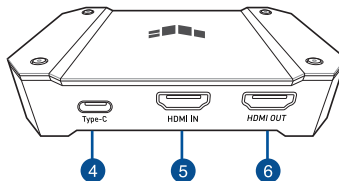
Lär känna din CU4K30

Framifrån



1. Headset-port
2. LED-indikator
3. Gamepad-port

Bakifrån



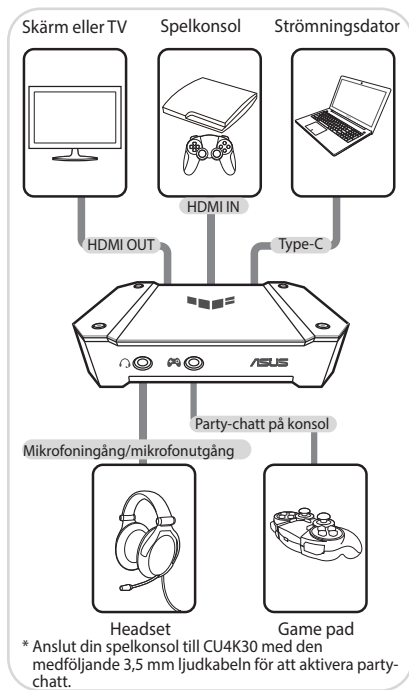
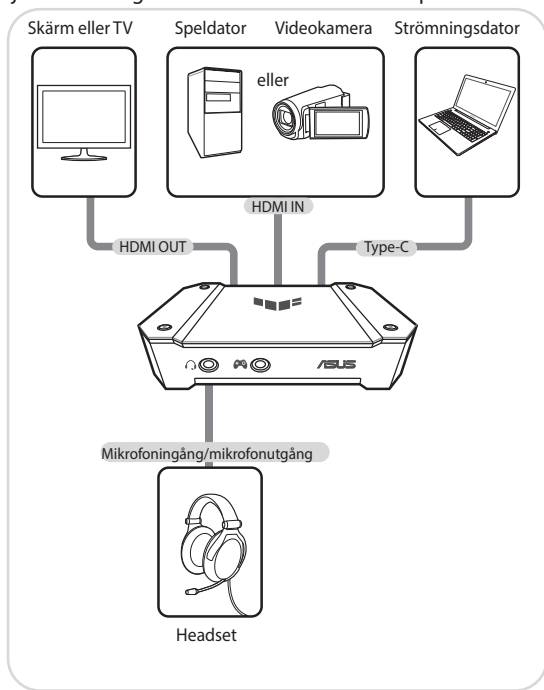
4. USB 3.2 Gen1x1 Type-C®
5. HDMI IN-port
6. HDMI OUT-port

LED-indikationer

Status	LED-indikator	indikationer
Arbetar	Fast grönt	Vänteläge (USB 2.0)
	Fast blått	Vänteläge (USB 3.2 Gen1x1)
	Färgcykeleffekt	Driftsläge (Partyläge på)
	Regnbågeeffekt	Driftsläge (Partyläge av)
	Fast rött	HDCP/Upp- eller nedgradering misslyckades
	Blinkande rött	Enhet/USB onormal
	Blinkande gult	HDMI-ingång avbruten
Uppgradering av fast program	Pulserande orange	Uppgradering av fast program
	Fast orange	Den fasta programvaran har uppdaterats
	Blinkande rött	Uppgradering av fasta programvaran misslyckades

Ansluta visningsenheter

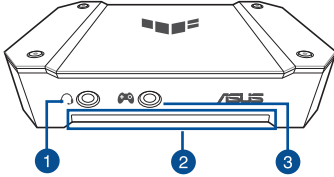
Anslut signalkablarna till motsvarande portar på CU4K30. Se följande för skärm- och ljudanslutningarna och deras motsvarande portar.



NOTERA: Produkten stödjer inte visning, inspelning och direktströmning av HDCP-skyddade signaler.

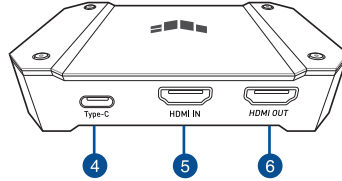
CU4K30 ürününüzü Tanıyın

Önden görünüm



1. Kulaklık bağlantı noktası
2. LED gösterge
3. Gamepad bağlantı noktası

Arkadan görünüm



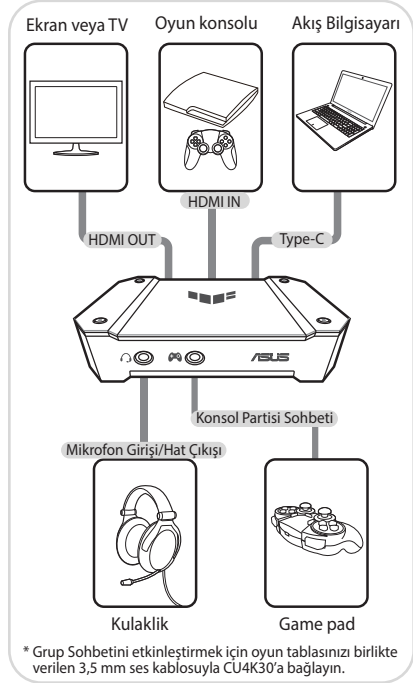
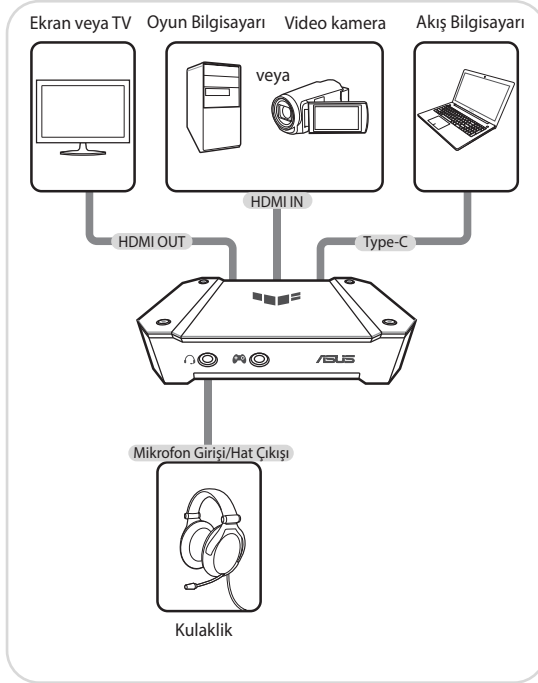
4. USB 3.2 Gen1x1 Type-C®
5. HDMI IN bağlantı noktası
6. HDMI OUT bağlantı noktası

LED gösterimleri

Durum	LED göstergeleri	Gösterimler
Çalışma	Sabit yeşil	Bekleme modu (USB 2.0)
	Sabit mavi	Bekleme modu (USB 3.2 Gen1x1)
	Renk döngüsü etkisi	Çalışma modu (Parti modu açık)
	Gökkuşağı etkisi	Çalışma modu (Parti modu kapalı)
	Sabit kırmızı	HDCP/Yükseltme veya Düşürme Başarısız
	Yanıp sönen kırmızı	Cihaz/USB anormal
	Yanıp sönen sarı	HDMI girişi kesintiye uğradı
Ürün yazılımı güncelleme	Aralıklı turuncu	Ürün yazılımı güncelleniyor
	Sabit turuncu	Ürün yazılımı başarıyla güncellendi
	Kırmızı yanıp sönüyor	Ürün yazılımı güncellemesi başarısız

Görüntü cihazlarının bağlanması

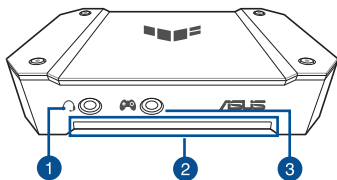
Sinyal kablolarını CU4K30'daki ilgili bağlantı noktalarına bağlayın. Ekran ve ses konnektörleri ve bunlara karşılık gelen bağlantı noktaları için aşağıdakilere bakın.



NOT: Ürün, HDCP korumalı sinyallerin görüntülenmesini, kaydedilmesini ve canlı akışını desteklemez.

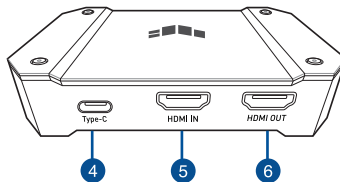
Conhecendo seu CU4K30

Vista frontal



1. Porta do fone de ouvido
2. Indicador de LED
3. Porta de controle de jogo

Vista traseira



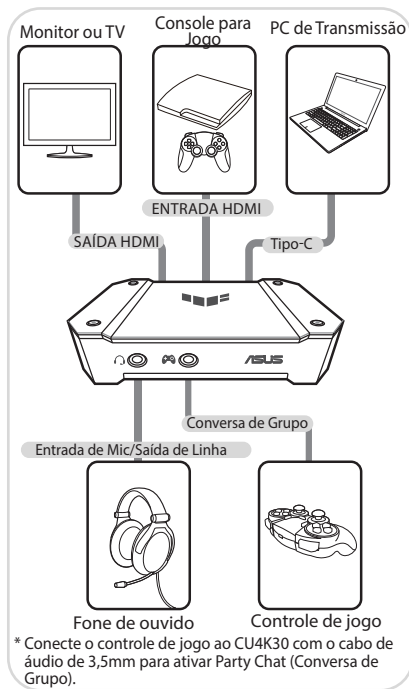
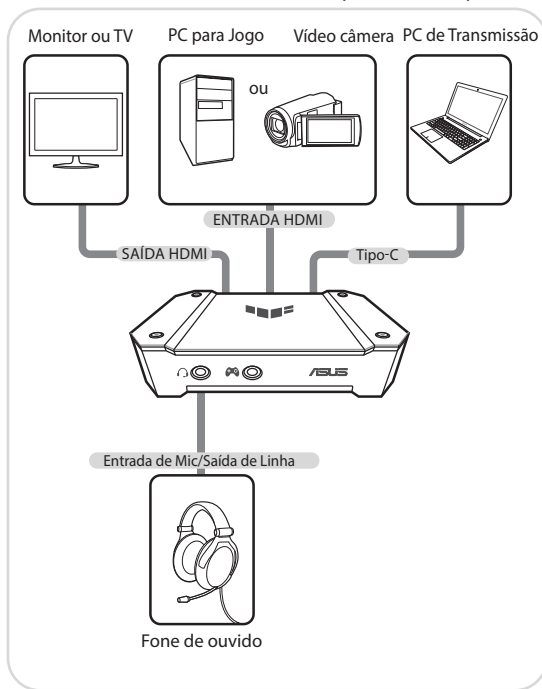
4. USB 3.2 Gen1x1 Tipo-C®
5. Porta de entrada HDMI
6. Porta de saída HDMI

Indicações de LED

Status	Indicador de LED	Indicações
Funcionando	Verde estático	Modo de espera (USB 2.0)
	Azul estático	Modo de espera (USB 3.2 Gen1x1)
	Efeito do ciclo de cores	Modo de trabalho (Modo de grupo ativado)
	Efeito arco-íris	Modo de trabalho (Modo de grupo desligado)
	Vermelho estático	Falha de HDCP/Upscaling ou downscaling
	Vermelho intermitente	Dispositivo/USB anormal
	Amarelo piscando	Entrada HDMI interrompida
Atualização de firmware	Laranja piscando	Atualização de firmware
	Laranja estático	Firmware atualizado com sucesso
	Vermelho intermitente	A atualização do firmware falhou

Conectando dispositivos de exibição

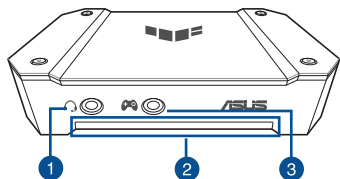
Conecte os cabos de sinal às portas correspondentes no CU4K30. Consulte o seguinte para obter os conectores de vídeo e áudio e suas portas correspondentes.



NOTA: O produto não suporta visualização, gravação e transmissão ao vivo de sinais protegidos por HDCP.

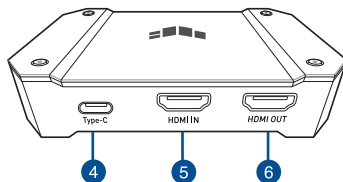
各部の名称

前面



1. ヘッドセットポート
(3.5mm オーディオ端子)
2. LED インジケータ
3. ゲームパッドポート
(3.5mm オーディオ端子)

背面



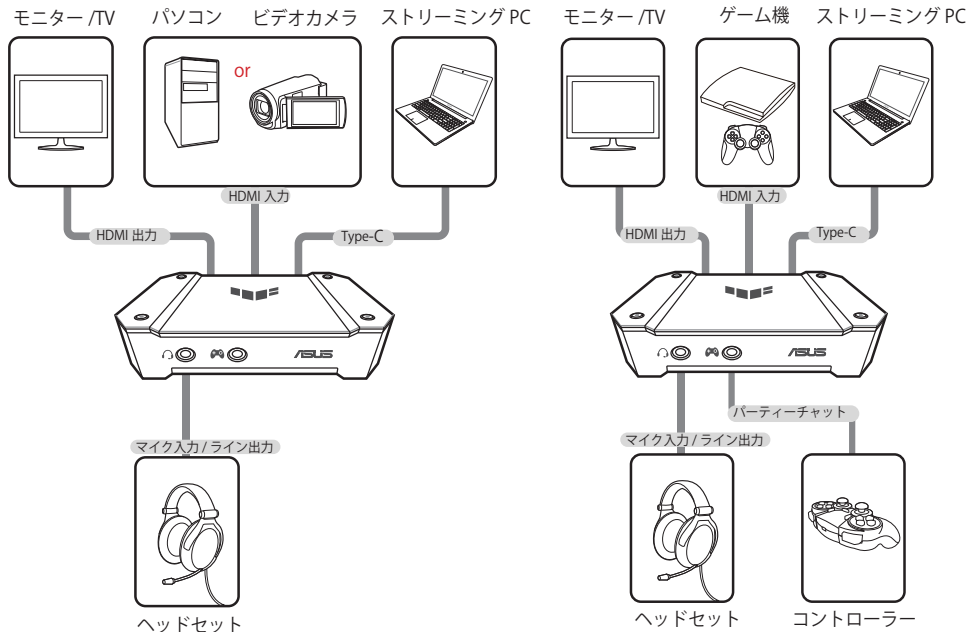
4. USB Type-C® ポート (USB 3.2 Gen 1)
5. HDMI 入力ポート
6. HDMI 出力ポート

LED インジケータ

状態	LEDインジケータ	状態
動作中	緑点灯	スタンバイモード (USB 2.0 接続)
	青点灯	スタンバイモード (USB 3.2 Gen 1 接続)
	カラーサイクル	動作中 (パーティモード オン)
	レインボー	動作中 (パーティモード オフ)
	赤点灯	HDCP検出またはアップスケーリング/ダウンスケーリング失敗
	赤点滅	デバイス/USB信号が異常
	黄点滅	HDMI入力信号が遮断
ファームウェア更新中	オレンジ ゆっくり点滅	ファームウェア更新中
	オレンジ点灯	ファームウェア更新完了
	赤点滅	ファームウェア更新に失敗

デバイスの接続

以下の図を参考に、それぞれの機器を接続します。

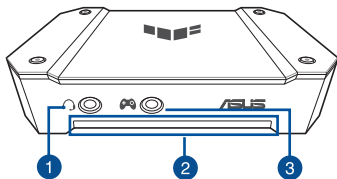


*パーティーチャットを利用する場合は、付属の3.5mmオーディオケーブルで本機とコントローラーを接続します。

ご注意：HDCP (High-bandwidth Digital Content Protection) により保護されたコンテンツの表示、録画、配信はできません。

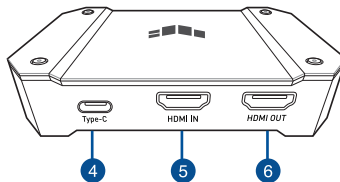
Tìm hiểu về CU4K30

Xem từ mặt trước



1. Cổng tai nghe
2. Đèn báo LED
3. Cổng tay cầm chơi game

Xem từ mặt sau



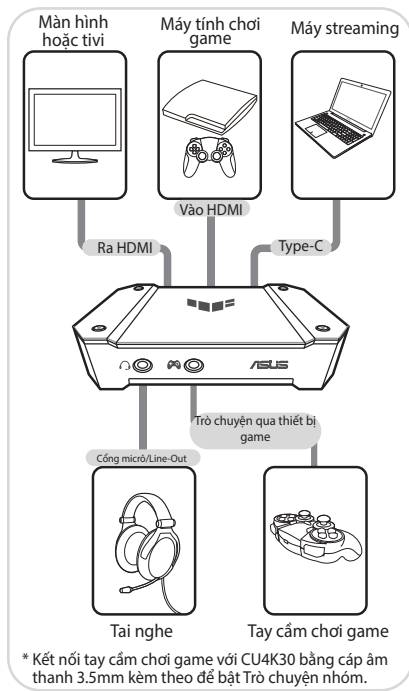
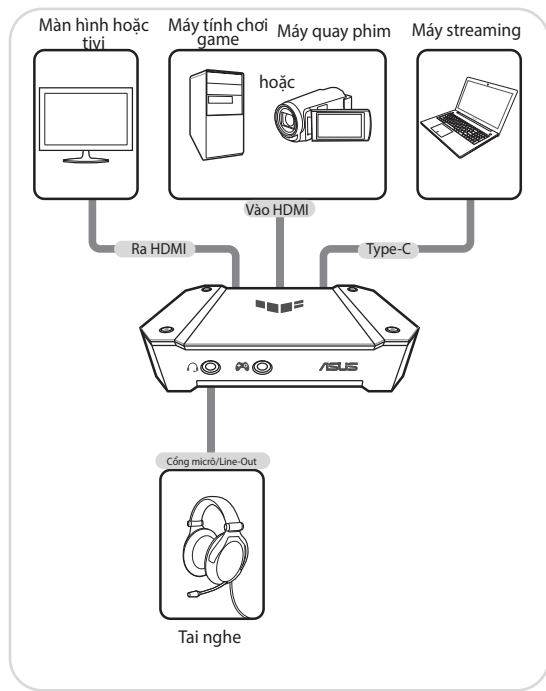
4. 1 cổng USB 3.2 Gen1 Type-C®
5. Cổng vào HDMI
6. Cổng ra HDMI

Chỉ báo đèn LED

Trạng thái	Đèn báo LED	Chỉ báo
Đang hoạt động	Màu lục cố định	Chế độ chờ (USB 2.0)
	Màu lam cố định	Chế độ chờ (USB 3.2 Gen1x1)
	Hiệu ứng đổi màu	Chế độ hoạt động (Chế độ nhóm đang bật)
	Hiệu ứng cầu vồng	Chế độ hoạt động (Chế độ nhóm đã tắt)
	Màu đỏ cố định	HDCP/Lỗi tăng hoặc giảm tỷ lệ
	Nhấp nháy màu đỏ	Thiết bị/USB bất thường
	Nhấp nháy màu vàng	Đầu vào HDMI bị gián đoạn
Nâng cấp firmware	Nhấp nháy màu cam	Nâng cấp firmware
	Màu cam cố định	Đã nâng cấp firmware thành công
	Nhấp nháy màu đỏ	Cập nhật firmware thất bại

Đang kết nối các thiết bị màn hình

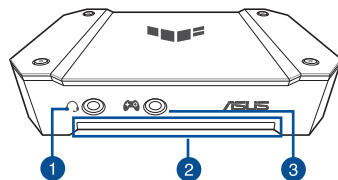
Cắm cáp tín hiệu vào các cổng tương ứng trên CU4K30. Tham khảo các bộ phận sau cho các đầu cắm màn hình và âm thanh cũng như các cổng tương ứng.



LƯU Ý: Sản phẩm không hỗ trợ xem, ghi hình và phát trực tiếp các tín hiệu được bảo vệ bởi HDCP.

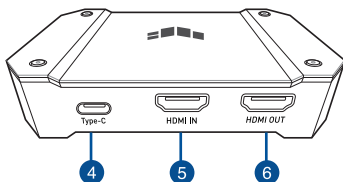
הכירו את ה CU4K30

מבט קדמי



1. שקע חיבור לאוזניות
2. פאנל חיווי LED
3. שקע חיבור ל GamePad

מבט אחורי



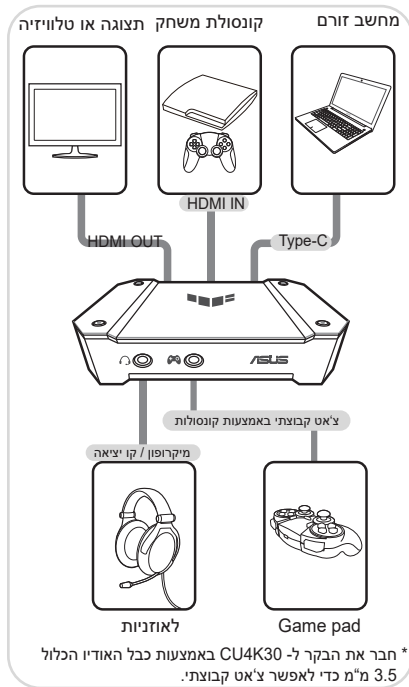
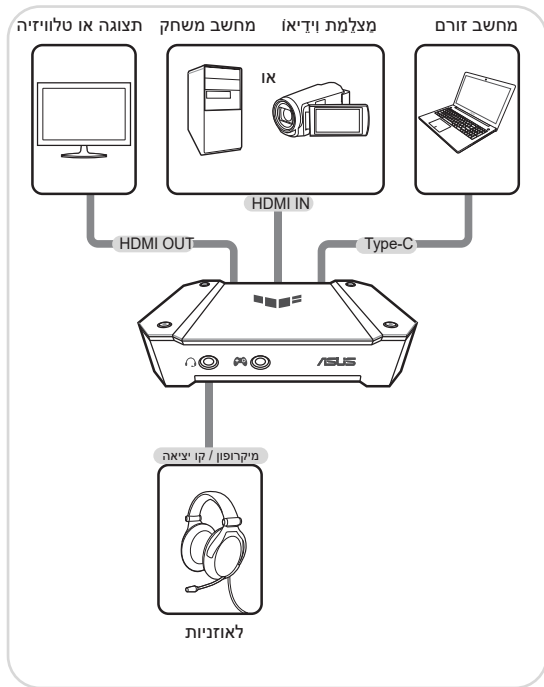
4. USB 3.2 Gen1x1 Type-C®
5. חיבור HDMI IN
6. חיבור HDMI OUT

חיווי נורית

מצב	מחון לד	חיוויים
עובד	ירוק קבוע	מצב המתנה (USB 2.0)
	כחול קבוע	מצב המתנה (USB 3.2 Gen1x1)
	אפקט מחזור צבעים	מצב עבודה (מצב מסיבה פועל)
	אפקט קשת בענן	מצב עבודה (מצב מסיבה כבוי)
	אדום קבוע	כשל HDCP/הרחבה או הקטנה
	אדום מהבהב	התקן/USB חריג
שדרוג קושחה	צהוב מהבהב	כניסת HDMI נותקה
	כתום נושם	שדרוג קושחה
	כתום קבוע	הקושחה שודרגה בהצלחה
	אדום מהבהב	עדכון הקושחה נכשל

חיבור התקני תצוגה

מחברים את כבלי האותות לחיבורים המתאימים ב-CU4K30. ניתן לעיין במידע שלהלן בנוגע למחברי תצוגה ושמע והחיבורים המתאימים שלהם.



הערה: מוצר זה לא תומך בצפייה, הקלטה וסטרימינג של אותות מוגני HDCP.

Notices

Federal Communications Commission Statement

This device complies with Part 15 of the FCC Rules. Operation is subject to the following two conditions:



- This device may not cause harmful interference.
- This device must accept any interference received including interference that may cause undesired operation.

This equipment has been tested and found to comply with the limits for a Class B digital device, pursuant to Part 15 of the FCC Rules. These limits are designed to provide reasonable protection against harmful interference in a residential installation. This equipment generates, uses and can radiate radio frequency energy and, if not installed and used in accordance with manufacturer's instructions, may cause harmful interference to radio communications. However, there is no guarantee that interference will not occur in a particular installation. If this equipment does cause harmful interference to radio or television reception, which can be determined by turning the equipment off and on, the user is encouraged to try to correct the interference by one or more of the following measures:

- Reorient or relocate the receiving antenna.
- Increase the separation between the equipment and receiver.
- Connect the equipment to an outlet on a circuit different from that to which the receiver is connected.
- Consult the dealer or an experienced radio/TV technician for help.

CAUTION! The use of shielded cables for connection of the monitor to the graphics card is required to assure compliance with FCC regulations. Changes or modifications to this unit not expressly approved by the party responsible for compliance could void the user's authority to operate this equipment.

Compliance Statement of Innovation, Science and Economic Development Canada (ISED)

This device complies with Innovation, Science and Economic Development Canada licence exempt RSS standard(s). Operation is subject to the following two conditions: (1) this device may not cause interference, and (2) this device must accept any interference, including interference that may cause undesired operation of the device.

CAN ICES-003(B)/NMB-003(B)

Déclaration de conformité de Innovation, Sciences et Développement économique Canada (ISED)

Le présent appareil est conforme aux CNR d'Innovation, Sciences et Développement économique Canada applicables aux appareils radio exempts de licence. L'exploitation est autorisée aux deux conditions suivantes : (1) l'appareil ne doit pas produire de brouillage, et (2) l'utilisateur de l'appareil doit accepter tout brouillage radioélectrique subi, même si le brouillage est susceptible d'en compromettre le fonctionnement.

CAN ICES-003(B)/NMB-003(B)

Limitation of Liability

Circumstances may arise where because of a default on ASUS' part or other liability, you are entitled to recover damages from ASUS. In each such instance, regardless of the basis on which you are entitled to claim damages from ASUS, ASUS is liable for no more than damages for bodily injury (including death) and damage to real property and tangible personal property; or any other actual and direct damages resulted from omission or failure of performing legal duties under this Warranty Statement, up to the listed contract price of each product.

ASUS will only be responsible for or indemnify you for loss, damages or claims based in contract, tort or infringement under this Warranty Statement.

This limit also applies to ASUS' suppliers and its reseller. It is the maximum for which ASUS, its suppliers, and your reseller are collectively responsible.

UNDER NO CIRCUMSTANCES IS ASUS LIABLE FOR ANY OF THE FOLLOWING: (1) THIRD-PARTY CLAIMS AGAINST YOU FOR DAMAGES; (2) LOSS OF, OR DAMAGE TO, YOUR RECORDS OR DATA; OR (3) SPECIAL, INCIDENTAL, OR INDIRECT DAMAGES OR FOR ANY ECONOMIC CONSEQUENTIAL DAMAGES (INCLUDING LOST PROFITS OR SAVINGS), EVEN IF ASUS, ITS SUPPLIERS OR YOUR RESELLER IS INFORMED OF THEIR POSSIBILITY.

Proper disposal



DO NOT throw the device in municipal waste. This product has been designed to enable proper reuse of parts and recycling. The symbol of the crossed out wheeled bin indicates that the product (electrical, electronic equipment and mercury-containing button cell battery) should not be placed in municipal waste. Check local regulations for disposal of electronic products.



DO NOT throw the device in fire. DO NOT short circuit the contacts. DO NOT disassemble the device.

VCCI: Japan Compliance Statement

VCCI Class B Statement

VCCI 準拠クラス B 機器 (日本)

この装置は、クラス B 情報技術装置です。この装置は、家庭環境で使用することを目的としていますが、この装置がラジオやテレビジョン受信機に近接して使用されると、受信障害を引き起こすことがあります。

取扱説明書に従って正しい取り扱いをして下さい。



ASUS Recycling/Takeback Services

ASUS recycling and takeback programs come from our commitment to the highest standards for protecting our environment. We believe in providing solutions for you to be able to responsibly recycle our products, batteries, other components as well as the packaging materials. Please go to <http://csr.asus.com/english/Takeback.htm> for detailed recycling information in different regions.

English ASUSTeK Computer Inc. hereby declares that this device is in compliance with the essential requirements and other relevant provisions of related Directives. Full text of EU declaration of conformity is available at: www.asus.com/support

Français ASUSTeK Computer Inc. déclare par la présente que cet appareil est conforme aux critères essentiels et autres clauses pertinentes des directives concernées. La déclaration de conformité de l'UE peut être téléchargée à partir du site Internet suivant : www.asus.com/support.

Deutsch ASUSTeK Computer Inc. erklärt hiermit, dass dieses Gerät mit den wesentlichen Anforderungen und anderen relevanten Bestimmungen der zugehörigen Richtlinien übereinstimmt. Der gesamte Text der EU-Konformitätserklärung ist verfügbar unter: www.asus.com/support

Italiano ASUSTeK Computer Inc. con la presente dichiara che questo dispositivo è conforme ai requisiti essenziali e alle altre disposizioni pertinenti con le direttive correlate. Il testo completo della dichiarazione di conformità UE è disponibile all'indirizzo: www.asus.com/support

Русский Компания ASUS заявляет, что это устройство соответствует основным требованиям и другим соответствующим условиям соответствующих директив. Подробную информацию, пожалуйста, смотрите на www.asus.com/support

Български Компанията ASUSTeK Computer Inc. декларира, че това устройство е в съответствие със съществените изисквания и другите приложими постановления на свързаните директиви. Пълният текст на декларацията за съответствие на ЕС е достъпен на адрес: www.asus.com/support

Hrvatski ASUSTeK Computer Inc. ovim izjavljuje da je ovaj uređaj skladan s bitnim zahtjevima i ostalim odgovarajućim odredbama vezanih direktiva. Cijeli tekst EU izjave o skladnosti dostupan je na: www.asus.com/support

Čeština Společnost ASUSTeK Computer Inc. tímto prohlašuje, že toto zařízení splňuje základní požadavky a další příslušná ustanovení souvisejících směrnic. Plné znění prohlášení o shodě EU je k dispozici na adrese: www.asus.com/support

Dansk ASUSTeK Computer Inc. erklærer hermed, at denne enhed er i overensstemmelse med hovedkravene og andre relevante bestemmelser i de relaterede direktiver. Hele EU-overensstemmelseserklæringen kan findes på: www.asus.com/support

Nederlands ASUSTeK Computer Inc. verklaart hierbij dat dit apparaat voldoet aan de essentiële vereisten en andere relevante bepalingen van de verwante richtlijnen. De volledige tekst van de EU-verklaring van conformiteit is beschikbaar op: www.asus.com/support

Eesti Käesolevaga kinnitab ASUSTeK Computer Inc., et see seade vastab asjakohaste direktiivide olulistele nõuetele ja teisteles asjassepuutuvatele sätetele. EL vastusdeklaratsiooni täielik tekst on saadaval järgmisel aadressil: www.asus.com/support

Suomi ASUSTeK Computer Inc. ilmoittaa täten, että tämä laite on asiaankuuluvien direktiivien olennaisien vaatimusten ja muiden täten koskevien säästöiden mukainen. EU-yhdenmukaisuusilmoituksen koko teksti on luettavissa osoitteesta: www.asus.com/support

Ελληνικά Το παρόν, η ASUSTeK Computer Inc. δηλώνει ότι αυτή η συσκευή συμμορφώνεται με τις θεμελιώδεις απαιτήσεις και άλλες σχετικές διατάξεις των Οδηγών της ΕΕ. Το πλήρες κείμενο της δήλωσης συμμόρφωσης είναι διαθέσιμο στη διεύθυνση: www.asus.com/support

Magyar Az ASUSTeK Computer Inc. ezennel kijelenti, hogy ez az eszköz megfelel a kapcsolódó irányelvek lényeges követelményeinek és egyéb vonatkozó rendelkezéseinek. Az EU megfeleléségi nyilatkozat teljes szövege innen található: www.asus.com/support

Latviski ASUSTeK Computer Inc. ar šo paziņo, ka šī ierīce atbilst saistošo Direktīvu būtiskajām prasībām un citiem citiem saistošajiem nosacījumiem. Pilns ES atbilstības paziņojuma teksts pieejams šeit: www.asus.com/support

Lietuvių „ASUSTeK Computer Inc.“ šiuo tvirtina, kad šis įrenginys atitinka pagrindinius reikalavimus ir kitas svarbias susijusių direktyvų nuostatas. Visą ES atitikties deklaracijos tekstą galima rasti: www.asus.com/support

Norsk ASUSTeK Computer Inc. erklærer herved at denne enheten er i samsvar med hovedsaklige krav og andre relevante forskrifter i relaterede direktiver. Fullstendig tekst for EU-samsvarserklæringen finnes på: www.asus.com/support

Polski Firma ASUSTeK Computer Inc. niniejszym oświadczam, że urządzenie to jest zgodne z zasadniczymi wymogami i innymi właściwymi postanowieniami powiązanych dyrektyw. Pełny tekst deklaracji zgodności UE jest dostępny pod adresem: www.asus.com/support

Português A ASUSTeK Computer Inc. declara que este dispositivo está em conformidade com os requisitos essenciais e outras disposições relevantes das Diretivas relacionadas. Texto integral da declaração da UE disponível em: www.asus.com/support

Română ASUSTeK Computer Inc. declară că acest dispozitiv se conformează cerințelor esențiale și altor prevederi relevante ale directivelor conexe. Textul complet al declarației de conformitate a Uniunii Europene se găsește la: www.asus.com/support

Srpski ASUSTeK Computer Inc. ovim izjavljuje da je ovaj uređaj u saglasnosti sa osnovnim zahtevima i drugim relevantnim odredbama povezanih Direktiva. Pun tekst EU deklaracije o usaglašenosti je dostupan da adresi: www.asus.com/support

Slovensky Spoločnosť ASUSTeK Computer Inc. týmto vyhlasuje, že toto zariadenie vyhovuje základným požiadavkám a ostatým príslušným ustanoveniam príslušných smerníc. Celý text vyhlásenia o zhode pre štáty EU je dostupný na adrese: www.asus.com/support

Slovenščina ASUSTeK Computer Inc. izjavlja, da je ta naprava skladna z bistvenimi zahtevami in drugimi ustreznimi določbami povezanih direktiv. Celotno besedilo EU-izjave o skladnosti je na voljo na spletnem mestu: www.asus.com/support

Español Por la presente, ASUSTeK Computer Inc. declara que este dispositivo cumple los requisitos básicos y otras disposiciones pertinentes de las directivas relacionadas. El texto completo de la declaración de la UE de conformidad está disponible en: www.asus.com/support

Svenska ASUSTeK Computer Inc. förklarar härmed att denna enhet överensstämmer med de grundläggande kraven och andra relevanta föreskrifter i relaterade direktiv. Fulltext av EU-försäkran om överensstämmelse finns på: www.asus.com/support

Українська ASUSTeK Computer Inc. заявляє, що цей пристрій відповідає основним вимогам та іншим відповідним положенням відповідних Директив. Повний текст декларації відповідності стандартам ЄС доступний на: www.asus.com/support

Türkçe ASUSTeK Computer Inc., bu aygıtın temel gereksinimlerle ve ilgisiz Yönergelerin diğer ilgili koşullarıyla uyumlu olduğunu beyan eder. AB uygunluk bildirimini tam metni şu adreste bulunabilir: www.asus.com/support

Bosanski ASUSTeK Computer Inc. ovim izjavljuje da je ovaj uređaj uskladen sa bitnim zahtjevima i ostalim odgovarajućim odredbama vezanih direktiva. Cijeli tekst EU izjave o uskladenosti dostupan je na: www.asus.com/support

עברית אשראי ASUSTeK Computer Inc. מתחייב כי מכשיר זה תואם לדרישות החוקיות והטכניות של התקנה. ניתן לקרוא את תוספת המלא של הצהרת התאמת הרגולטורית עבור החיבור האירופי בכתובת: www.asus.com/support

Vietnam RoHS

ASUS products sold in Vietnam, on or after September 23, 2011, meet the requirements of the Vietnam Circular 30/2011/TT-BCT.

Các sản phẩm ASUS bán tại Việt Nam, vào ngày 23 tháng 9 năm 2011 trở về sau, đều phải đáp ứng các yêu cầu của Thông tư 30/2011/TT-BCT của Việt Nam.

India E-waste (Management) Rules 2016

This product complies with the "India E-Waste (Management) Rules, 2016" and prohibits use of lead, mercury, hexavalent chromium, polybrominated biphenyls (PBBs) and polybrominated diphenyl ethers (PBDEs) in concentrations exceeding 0.1 % by weight in homogenous materials and 0.01 % by weight in homogenous materials for cadmium, except for the exemptions listed in Schedule II of the Rule.

AEEE Yönetmeliğine Uygundur.

KC: Korea Warning Statement



B급 기기 (가정용 방송통신기자재)

이 기기는 가정용(B급) 전자파적합기기로서 주로 가정에서 사용하는 것을 목적으로 하며, 모든 지역에서 사용할 수 있습니다.

R-R-M5Q-CU4K30

Ukraine Certification Logo



EAC Certification Logo



CE Mark Warning



D33005
RoHS



「產品之限用物質含有情況」之相關資訊，請參考下表：

單元	限用物質及其化學符號					
	鉛 (Pb)	汞 (Hg)	鎘 (Cd)	六價鉻 (Cr ⁶⁺)	多溴聯苯 (PBB)	多溴二苯醚 (PBDE)
印刷電路板及電子組件	—	○	○	○	○	○
外殼	○	○	○	○	○	○
連接線	○	○	○	○	○	○
其他及其配件	○	○	○	○	○	○

備考1. "O" 係指該項限用物質之百分比含量未超出百分比含量基準值。
備考2. "-" 係指該項限用物質為排除項目。



电子电气产品有害物质限制使用标识要求：图中之数字为产品之环保使用期限。仅指电子电气产品中含有的有害物质不致发生外泄或突变从而对环境造成污染或对人身、财产造成严重损害的期限。

产品有害物质的名称及含量

部件名称	有害物质					
	铅 (Pb)	汞 (Hg)	镉 (Cd)	六价铬 (Cr(VI))	多溴联苯 (PBB)	多溴二苯醚 (PBDE)
印刷电路板及电子组件	×	○	○	○	○	○
外壳	○	○	○	○	○	○
连接线	○	○	○	○	○	○
其它及其配件	○	○	○	○	○	○

本表格依据 SJ/T 11364 的规定编制。

○：表示该有害物质在该部件所有均质材料中的含量均在 GB/T 26572 规定的限量要求以下。

×：表示该有害物质至少在该部件的某一均质材料中的含量超出 GB/T 26572 规定的限量要求，然该部件仍符合欧盟指令 2011/65/EU 的规范。

备注：此产品所标示之环保使用期限，系指在一般正常使用状况下。

Manufacturer	ASUSTeK Computer Inc.	
	Tel:	+886-2-2894-3447
	Address:	1F, No. 15, Lide Rd., Beitou Dist., Taipei City 112, Taiwan
Authorised representative in Europe	ASUSTeK Computer GmbH	
	Address:	Harkortstrasse 21-23, 40880 Ratingen, Germany