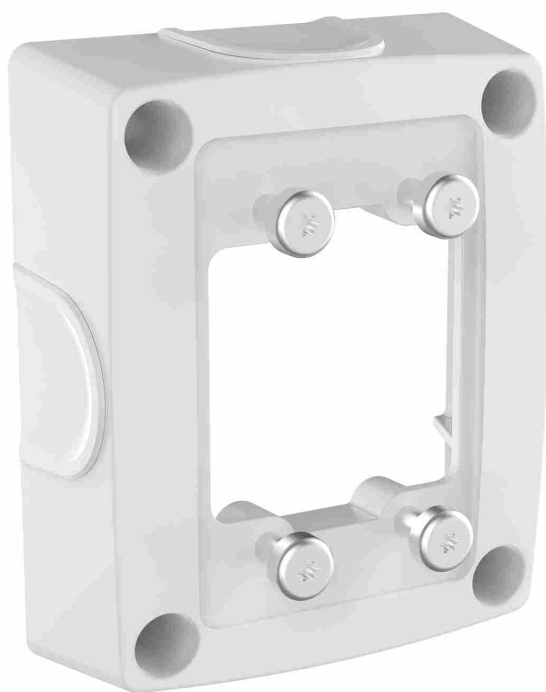


AXIS TQ1601-E Conduit Back Box

Aluminum conduit back box for increased mounting possibilities

AXIS TQ1601-E Conduit Back Box is an aluminum mount with a coating that alleviates corrosion. Its design with long screws and a washer helps dissipate vibrations, and the top/bottom and side conduit entries make installation easier. When used together with AXIS T94Q01A Wall Mount, the Ethernet cable can be routed through or along the wall (from left or right). The side and top/bottom-holes are compatible with 3/4" conduits, M25 cable protection products and with AXIS Conduit Interface (ACI) adapter range (NPS/U-shape). AXIS TQ1601-E can also be used to cover a single gang junction box.

- > **Aluminum**
- > **Coating in corrosion resilient material**
- > **Designed to dissipate vibrations**
- > **Conduit entries for ease of installation**
- > **Compatible with AXIS ACI Adapters 3/4"**



AXIS TQ1601-E Conduit Back Box

General	
Supported products	AXIS T94Q01A Wall Mount AXIS T92E Series AXIS T93F Series AXIS P13-E AXIS Q16-E AXIS T92G20 Outdoor Housing AXIS T91E61 Wall Mount
Maximum load	8 kg (17.6 lb)
Cable routing	Back: cable hole Sides: Conduit hole M25 (3/4 in) Bottom: Conduit hole M25 (3/4 in)
Environment	Indoor/outdoor
Material	Powder-coated aluminum Color: white NCS S 1002-B Stainless steel screws
Weight	540 g(1.19 lb)
Dimensions	130 x 158 x 50 mm (5.1 x 6.2 x 1.9 in)
Sustainability	PVC free
Approvals	Environment IEC/EN 60529 IP66/IP67, NEMA 250 Type 4X ^a Impact IEC/EN 62262 IK10
Included accessories	Installation Guide, 4x stainless steel screws (TX20)
Required accessories	Torx 30 Bit (required)
Warranty	3-year warranty, see axis.com/warranty

a. *Corrosion protected only*

Environmental responsibility:

[axis.com/environmental-responsibility](https://www.axis.com/environmental-responsibility)