

## 3ft USB to RS232 Serial DB9 Adapter

ICUSB232SM3

DE: Bedienungsanleitung - de.startech.com

FR: Guide de l'utilisateur - fr.startech.com

ES: Guía del usuario - es.startech.com

IT: Guida per l'uso - it.startech.com

NL: Gebruiksaanwijzing - nl.startech.com

PT: Guia do usuário - pt.startech.com

## Packaging Contents

- 1 x USB to Serial Adapter Cable
- 2 x Cable Nuts

## System Requirements

- USB enabled computer system with available USB port
- Windows® 8 (32/64bit), 7 (32/64), Vista (32/64), XP(32/64), 2000, ME, 98SE, CE 4.2, 5.2; Windows® Server 2008 R2, 2003(32/64); Mac OS 10.1, 10.4– 10.8; Linux 2.4.x – 3.9.x

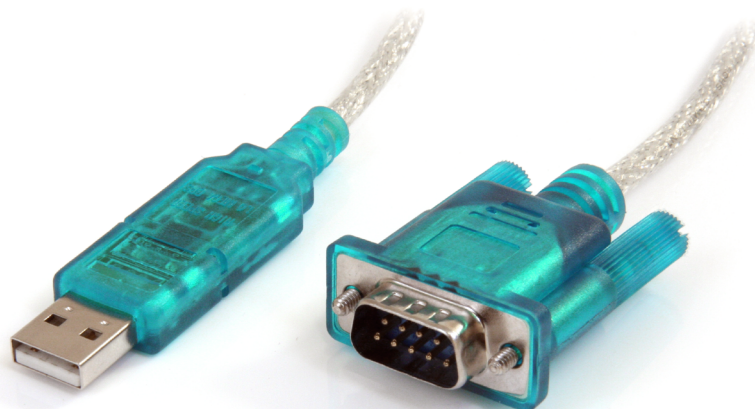
## Installation

### Windows

1. Open a web browser and go to [www.startech.com/downloads](http://www.startech.com/downloads).
2. Enter your product ID (ICUSB232SM3) and click Search.
3. Select the product from the search results, and download the available Proli c\_PL2303.zip le.
4. Once downloaded, right-click the zip le and extract the contents.
5. Browse to the Windows folder and run the PL2303\_Proli c\_DriverInstaller application, following the on-screen instructions to complete the install.
6. Connect the USB Serial cable to an available USB port.

### Mac OS

1. Open a web browser and go to [www.startech.com/downloads](http://www.startech.com/downloads).
2. Enter your product ID (ICUSB232SM3) and click Search.
3. Select the product from the search results, and download the available Proli c\_PL2303.zip le.
4. Once downloaded, double-click the zip le to extract the contents.
5. Browse to the Mac folder and choose the appropriate folder for the version you are running.
6. Run PL2303\_x.dmg application and follow the on-screen instructions to complete the install.
7. Connect the USB Serial cable to an available USB port.

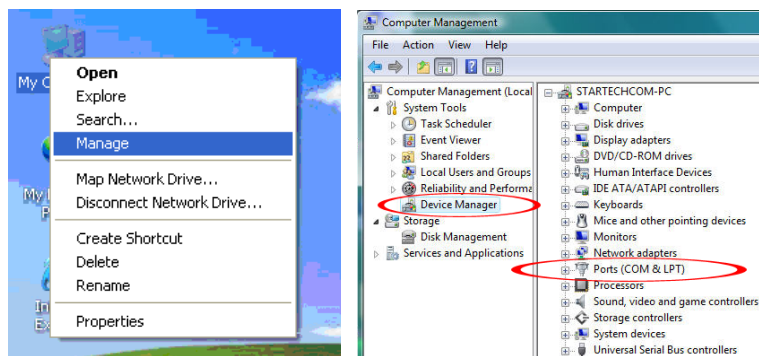


\*actual product may vary from photos

## Verifying Installation

### Windows

From the main desktop, right-click on "My Computer" ("Computer" in Vista/7), then select Manage. In the new Computer Management window, select Device Manager from the left window panel.



Double-click on the "Ports (COM & LPT)" option. An additional COM port should be listed.

## Specifications

<b>Host Interface</b>	USB 1.1
<b>Chipset ID</b>	Proli c PL2303
<b>External Connectors</b>	1 x DB9 male 1 x USB type A male
<b>LEDs</b>	None
<b>Supported Protocols</b>	RS232
<b>Maximum Data Transfer Rate</b>	1 Mbps
<b>Buffer Size</b>	96 Byte Tx/Rx
<b>Operating Temperature</b>	-20°C ~ 80°C (-4°F ~ 176°F)
<b>Storage Temperature</b>	-20°C ~ 80°C (-4°F ~ 176°F)
<b>Humidity</b>	0% ~ 65% RH
<b>Cable Length</b>	915mm / 36in
<b>Weight</b>	42g
<b>Compatible Operating Systems</b>	Windows® 8 (32/64bit), 7 (32/64), Vista (32/64), XP(32/64), 2000, ME, 98SE, CE 4.2, 5.2 Windows® Server 2008 R2, 2003(32/64) Mac OS 10.1, 10.4– 10.8 Linux 2.4.x – 3.9.x

## FCC Compliance Statement

This equipment has been tested and found to comply with the limits for a Class B digital device, pursuant to part 15 of the FCC Rules. These limits are designed to provide reasonable protection against harmful interference in a residential installation. This equipment generates, uses and can radiate radio frequency energy and, if not installed and used in accordance with the instructions, may cause harmful interference to radio communications. However, there is no guarantee that interference will not occur in a particular installation. If this equipment does cause harmful interference to radio or television reception, which can be determined by turning the equipment off and on, the user is encouraged to try to correct the interference by one or more of the following measures:

- Reorient or relocate the receiving antenna.
- Increase the separation between the equipment and receiver.
- Connect the equipment into an outlet on a circuit different from that to which the receiver is connected.
- Consult the dealer or an experienced radio/TV technician for help.

## Use of Trademarks, Registered Trademarks, and other Protected Names and Symbols

This manual may make reference to trademarks, registered trademarks, and other protected names and/or symbols of third-party companies not related in any way to StarTech.com. Where they occur these references are for illustrative purposes only and do not represent an endorsement of a product or service by StarTech.com, or an endorsement of the product(s) to which this manual applies by the third-party company in question. Regardless of any direct acknowledgement elsewhere in the body of this document, StarTech.com hereby acknowledges that all trademarks, registered trademarks, service marks, and other protected names and/or symbols contained in this manual and related documents are the property of their respective holders.

## Technical Support

StarTech.com's lifetime technical support is an integral part of our commitment to provide industry-leading solutions. If you ever need help with your product, visit [www.startech.com/support](http://www.startech.com/support) and access our comprehensive selection of online tools, documentation, and downloads.

For the latest drivers/software, please visit [www.startech.com/downloads](http://www.startech.com/downloads)

## Warranty Information

This product is backed by a one year warranty.

In addition, StarTech.com warrants its products against defects in materials and workmanship for the periods noted, following the initial date of purchase. During this period, the products may be returned for repair, or replacement with equivalent products at our discretion. The warranty covers parts and labor costs only. StarTech.com does not warrant its products from defects or damages arising from misuse, abuse, alteration, or normal wear and tear.

## Limitation of Liability

In no event shall the liability of StarTech.com Ltd. and StarTech.com USA LLP (or their officers, directors, employees or agents) for any damages (whether direct or indirect, special, punitive, incidental, consequential, or otherwise), loss of profits, loss of business, or any pecuniary loss, arising out of or related to the use of the product exceed the actual price paid for the product. Some states do not allow the exclusion or limitation of incidental or consequential damages. If such laws apply, the limitations or exclusions contained in this statement may not apply to you.