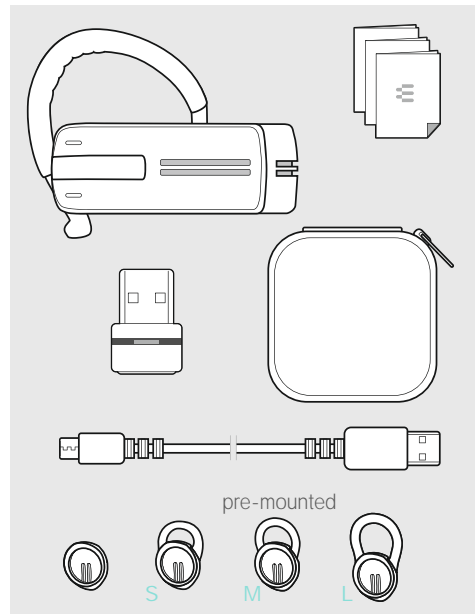


ADAPT Presence Grey UC Bluetooth® headset for phone calls

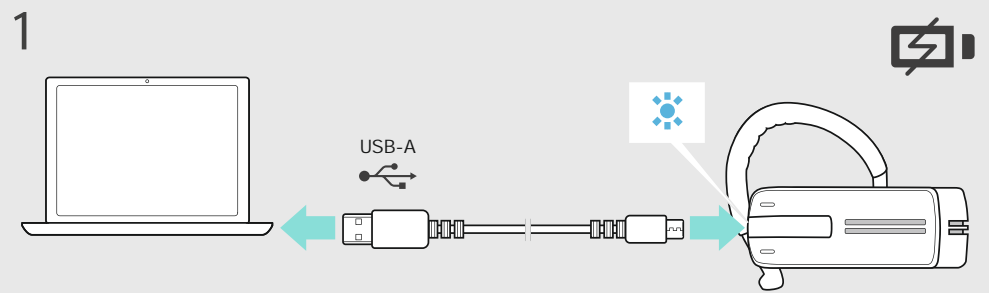
EN Quick Guide EL RU
 DE Kurzanleitung DA Kvikvejledning ZH-CHS 快速入门指南
 FR Guide express SV Snabbguide ZH-CHT 快速指南
 IT Guida rapida FI Pikaopas TR Hızlı Kilavuz
 ES Guía rápida PL Skrócona JA クイックガイド
 PT Guia Rápido instrukcja ID Panduan Cepat
 NL Mini obsługi KO 빠른 가이드
 handleiding

Model: PRESENCE

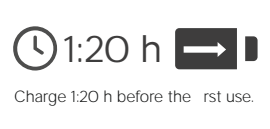
Package contents | Lieferumfang | Contenu de la boîte |
 Contenuti della confezione | Contenido del embalaje |
 Conteúdo da embalagem | Inhoud verpakking |
 Pakkens inhoud | Innehåll | forpackningen |
 Pakkauksen sisältö | Zawartość opakowania |
 | 套装内容 | 包装内容 | Kutunun içeriği |
 パッケージ内容 | Isi kemasan | 패키지 내용



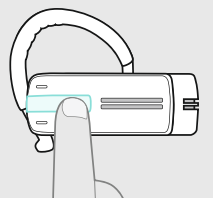
Charging the headset | Headset laden | Charger le micro-casque | Ricarica delle cuffie | Carga del auricular | Carregar o headset |
 De headset opladen | | Opladning af headsettet | Ladda headsettet | Headsetin lataaminen | Ładowanie słuchawek |
 | 为耳机充电 | 为耳機充電 | Kulaklıkların şarj etme | ヘッドセットの充電 | Mengisi daya headset | 헤드셋 충전



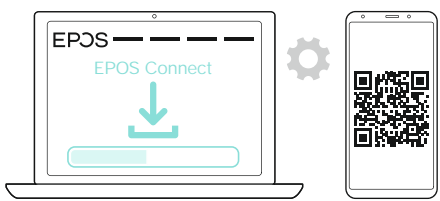
LED	Meaning
1x [Red LED]	below 1 hour talk time
1x [Blue LED]	1 to 2 hours talk time
2x [Blue LED]	2 to 4 hours talk time
3x [Blue LED]	4 to 10 hours talk time
[Blue LED]	100%



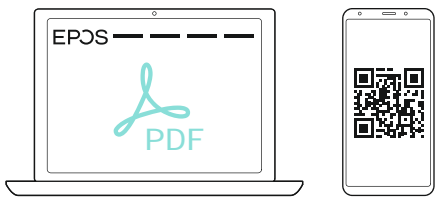
After 5 minutes, the LED goes on. Press the multi-function button to check the battery charge level.



For product specific software and firmware upgrade with EPOS Connect go to: eposaudio.com/connect

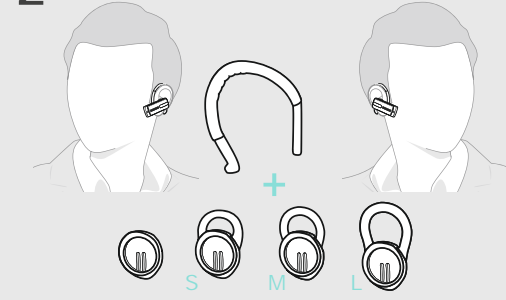


For Instruction manual go to: eposaudio.com/support

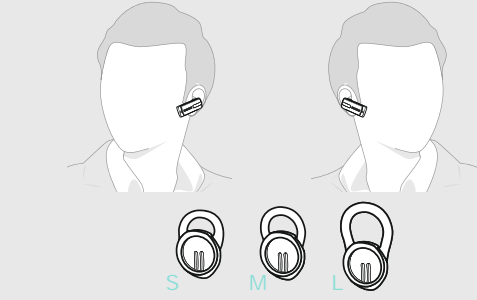


Adjusting and wearing the headset | Headset anpassen und tragen | Ajuster et porter le micro-casque | Regolazione e posizionamento delle cuffie | Cómo ajustar y llevar el auricular | Ajustar e usar o auscultador |
 De headset aanpassen en dragen | | Sådan justeres og bæres headsettet | Justera och bära headsettet | Kuulokkeiden säätäminen ja käyttäminen |
 Dostosowanie i noszenie zestawów słuchawkowych | | 調整并佩戴耳机 | 調整及佩戴耳機 | Kulaklıkların takılması ve ayarlanması | ヘッドセットの調整と装着 |
 Menyesuaikan dan mengenakan headset | 헤드셋 조정 및 착용

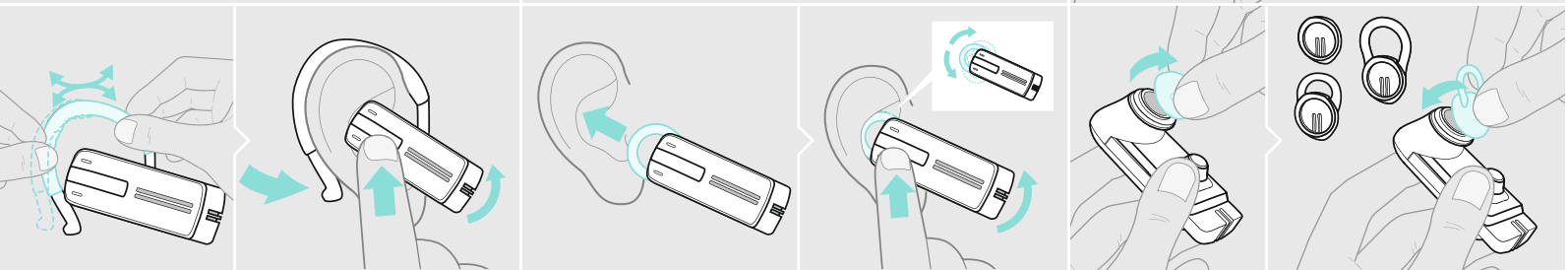
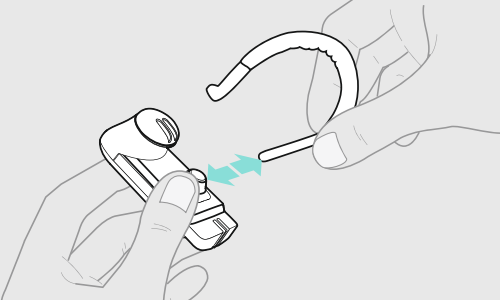
2 Ear hook wearing style



In-ear wearing style



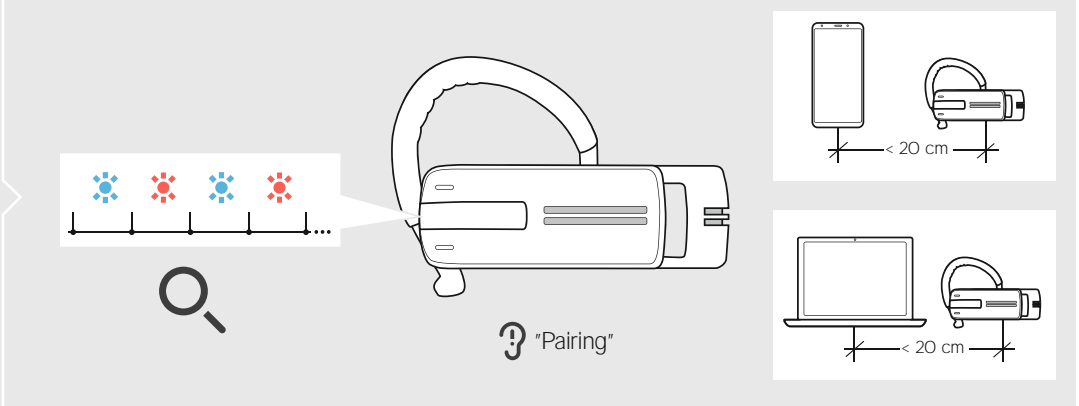
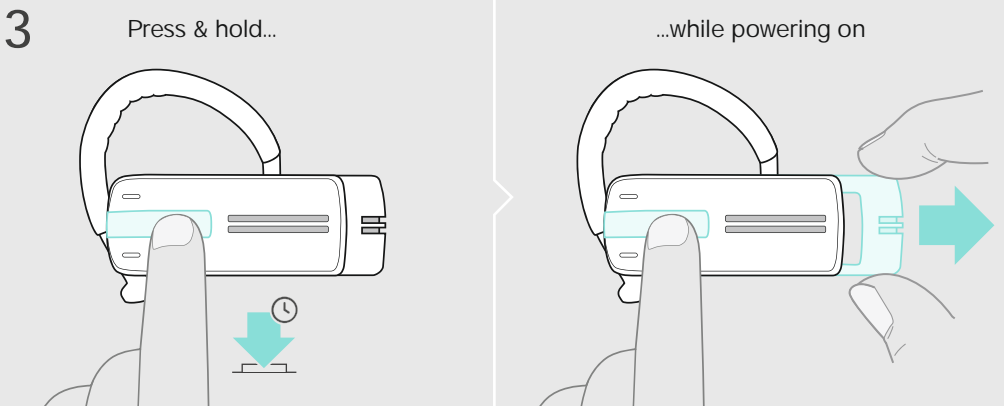
Changing ear hook and ear adapter



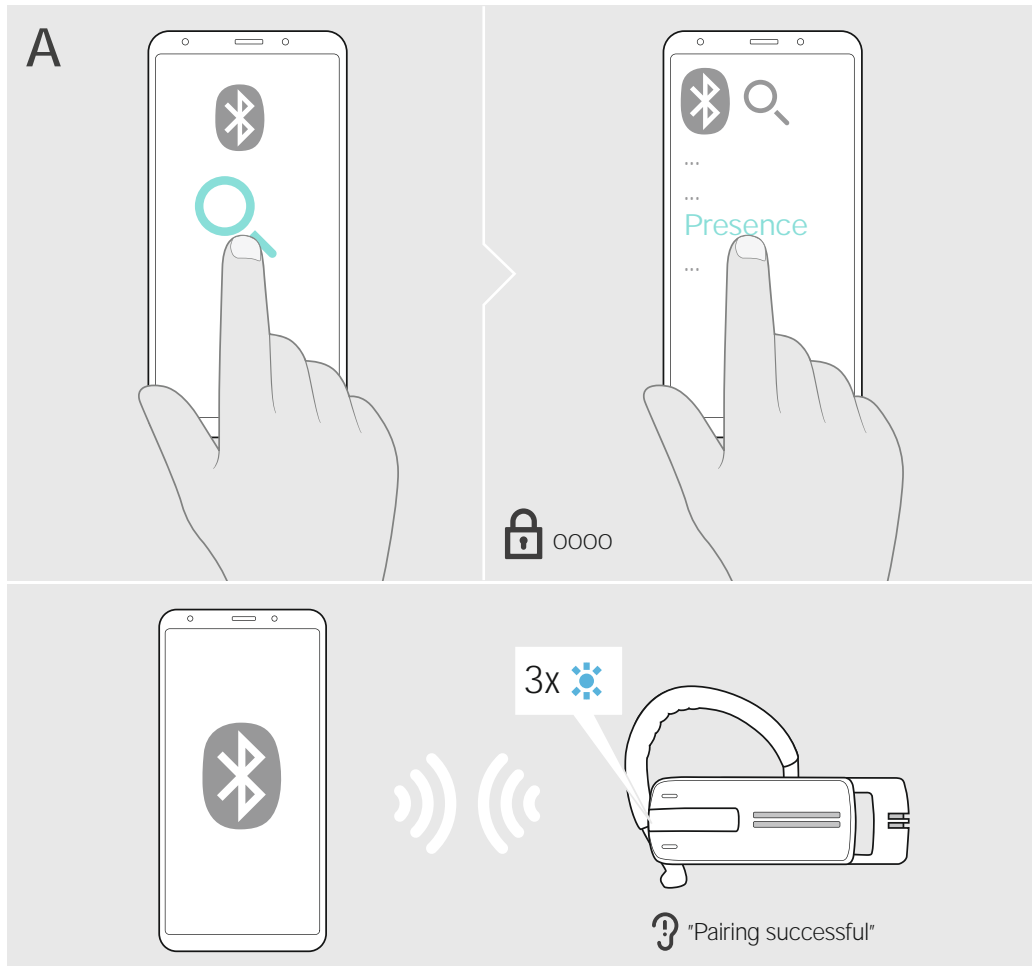
DSEA A/S
 Kongebakken 9, DK-2765 Smørum, Denmark
eposaudio.com

Printed in China, Publ. 10/22, 770-00168/A06

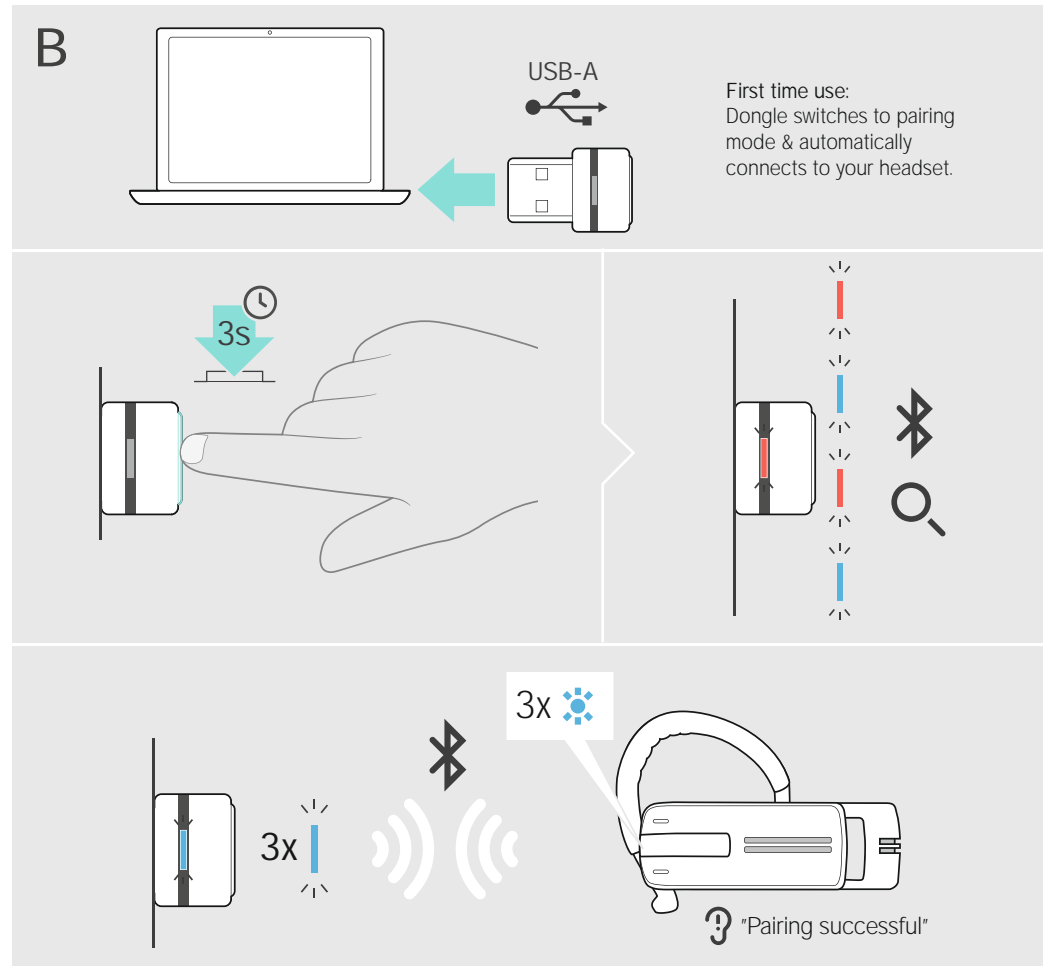
Pairing the headset | Headset verbinden | Appairer le micro-casque | Accoppiamento delle cuffie | Sincronizar el auricular | Emparelhar os auscultadores | De headset koppelen |
 Parowanie zestawu słuchawkowego | | 为耳机配对 | 與耳機配對 | Kulaklıkların eşleştirilmesi | ヘッドセットのペアリング | Menyandingkan headset | 헤드셋 페어링 |
 | Sådan parres headsettet | Para ihop headsetet | Kuulokkeiden laiteparin muodostaminen |



Connect to your mobile phone via Bluetooth®



Connect to your computer via Bluetooth®



Power on: Press and hold the power button for 3 seconds. The LED indicator will blink blue.

Power off: Press and hold the power button for 3 seconds. The LED indicator will blink red.

Automatic voice prompts

- Connected to the Bluetooth device:** "Phone 1 connected" or "Phone 2 connected" or "Dongle connected"
- Out of the Bluetooth transmission range:** "Phone 1 disconnected" or "Phone 2 disconnected" or "Dongle disconnected"

Range: -25 m

Volume control

Press both volume buttons to swap the +/- assignment of the volume buttons.

- A:** During active call: Changes the speech volume
- B:** During media reproduction: Changes the media volume
- C:** No active call/media reproduction: Changes the ring tone, beeps & voice prompts volume

Call control features

- Accepts a call
- Ends a call "Call ended"
- Rejects a call "Call rejected"
- Redials the last number "Redialling"
- Puts an active call on hold (pause)
- Starts/stops voice assistant (press until you hear a beep, then release the button)
- Transfers a call from the mobile phone to the headset
- Transfers a call from the headset to the mobile phone

Managing multiple calls

- Accepts the incoming call and puts an active call on hold
- Accepts the incoming call and ends the active call
- Rejects the incoming call and continues the active call

Mute function

- Mutes the microphone "Mute on"
- Unmutes the microphone "Mute off"

Overview of the LED indications

- Bluetooth search: 3x blue blink
- Bluetooth connected: 3x blue blink
- Bluetooth disconnected: 3x red blink
- Bluetooth search successful: 3x blue blink
- Bluetooth search failed: 3x red blink
- Call accepted: 1x blue blink
- Call ended: 1x red blink
- Call rejected: 1x red blink
- Call redialling: 1x blue blink
- Call on hold: 1x blue blink
- Call transfer to headset: 1x blue blink
- Call transfer to mobile phone: 1x blue blink
- Media volume: 1x purple blink
- Speech volume: 1x red blink

Retrieving information on the remaining talk time

- "Between 8 and 10 hours talk time": 3x blue blink
- "Between 4 and 8 hours talk time": 3x blue blink
- "Between 2 and 4 hours talk time": 2x blue blink
- "Between 1 and 2 hours talk time": 1x blue blink
- "Less than 1 hour talk time": 1x red blink

below 15 min talk time, automatic voice prompts: "Recharge headset"

Fast charging

- 35 min charging = 5 h talk time
- 1:20 h charging = 10 h talk time

Reconnecting/disconnecting Bluetooth

Press and hold the power button for 2 seconds to disconnect. Press and hold for 3 seconds to reconnect.

Cleaning the product

Accessories

- Presence Headband
- Charger CH 20 for Headband use or Charger cable CH 20 MB USB